



THE HOFF BUILDING

802 W. BANNOCK, BOISE, ID 83702

OFFICE

FOR LEASE



PROPERTY HIGHLIGHTS

- One of Boise's premier historic buildings.
- Classic details, sweeping views, gorgeous Art Deco style lobby
- Operable windows and large New York penthouse-style terraces available with some suites
- Spacious, beautifully remodeled conference center, available for all tenants
- Fantastic location near the Capitol, in the heart of Downtown Boise.

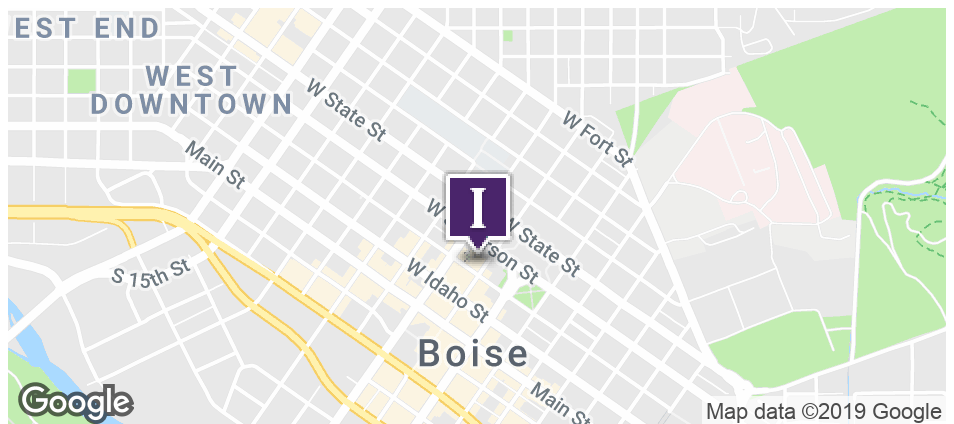
PROPERTY INFORMATION:

Building Class: **A**

Market: **Downtown Boise**

Cross Streets: **8th & Bannock**

SPACE	SIZE (SF)	LEASE RATE
Lower Plaza 107	1,535 SF	\$13.00 SF/YR
First Floor 101	2,178 SF	\$20.00 SF/YR
Third Floor 300	219 SF	\$350 PER MONTH
Third Floor 304	1,471 SF	\$18.50 SF/YR
Third Floor 308	1,849 SF	\$18.50 SF/YR
Fourth Floor 404	2,351 - 2,637 SF	\$20.00 SF/YR
Fourth Floor 406	286 SF	\$550 PER MONTH



380 E. Parkcenter Boulevard
 Suite 290
 Boise, ID 83706
www.icrellc.com
 (208) 429.8603 / office / (208) 429-8604 fax

LISTING AGENT:

Wendy Shoemaker
 wendy@icrellc.com
 o / 208.285.2611
 c / 208.859.2816



THE HOFF BUILDING

802 W. BANNOCK, BOISE, ID 83702

PROPERTY DESCRIPTION

PROPERTY OVERVIEW

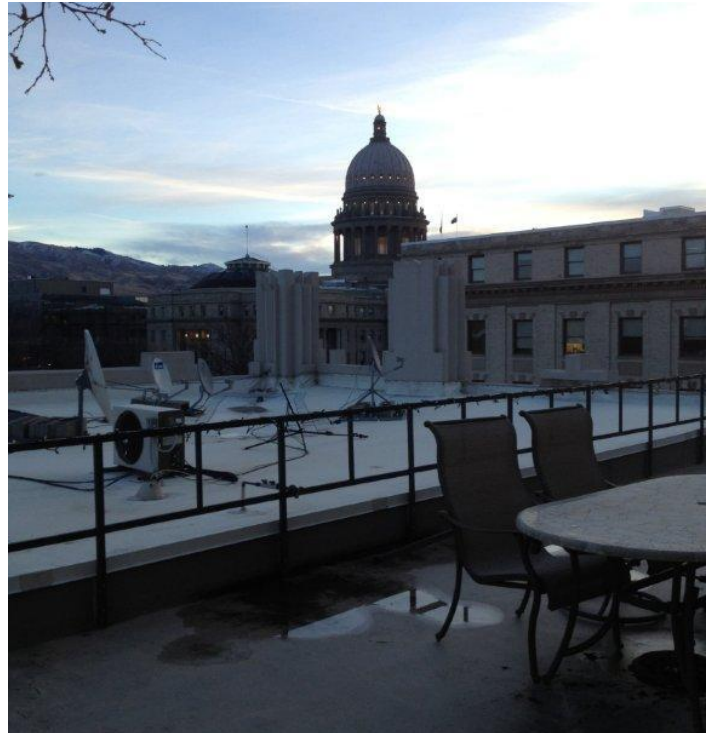
Historic Art Deco style building located in the Heart of Downtown Boise.

Built in 1929 as the Hotel Boise, the building was converted to mixed-use commercial in 1979. It has been continually updated, and features state of the art geothermal heating - very efficient, plus windows that open on most floors - a "green" property.

Wonderful views from most spaces.

LOCATION OVERVIEW

Corner of 8th and Bannock Street - near State Capitol, State, Federal and City offices, restaurants, banks, and other businesses in the heart of Downtown Boise!



OFFICE



INTERMOUNTAIN
COMMERCIAL REAL ESTATE

380 E. Parkcenter Boulevard
Suite 290
Boise, ID 83706
www.icrellc.com
(208) 429.8603 / office / (208) 429-8604 fax

LISTING AGENT:

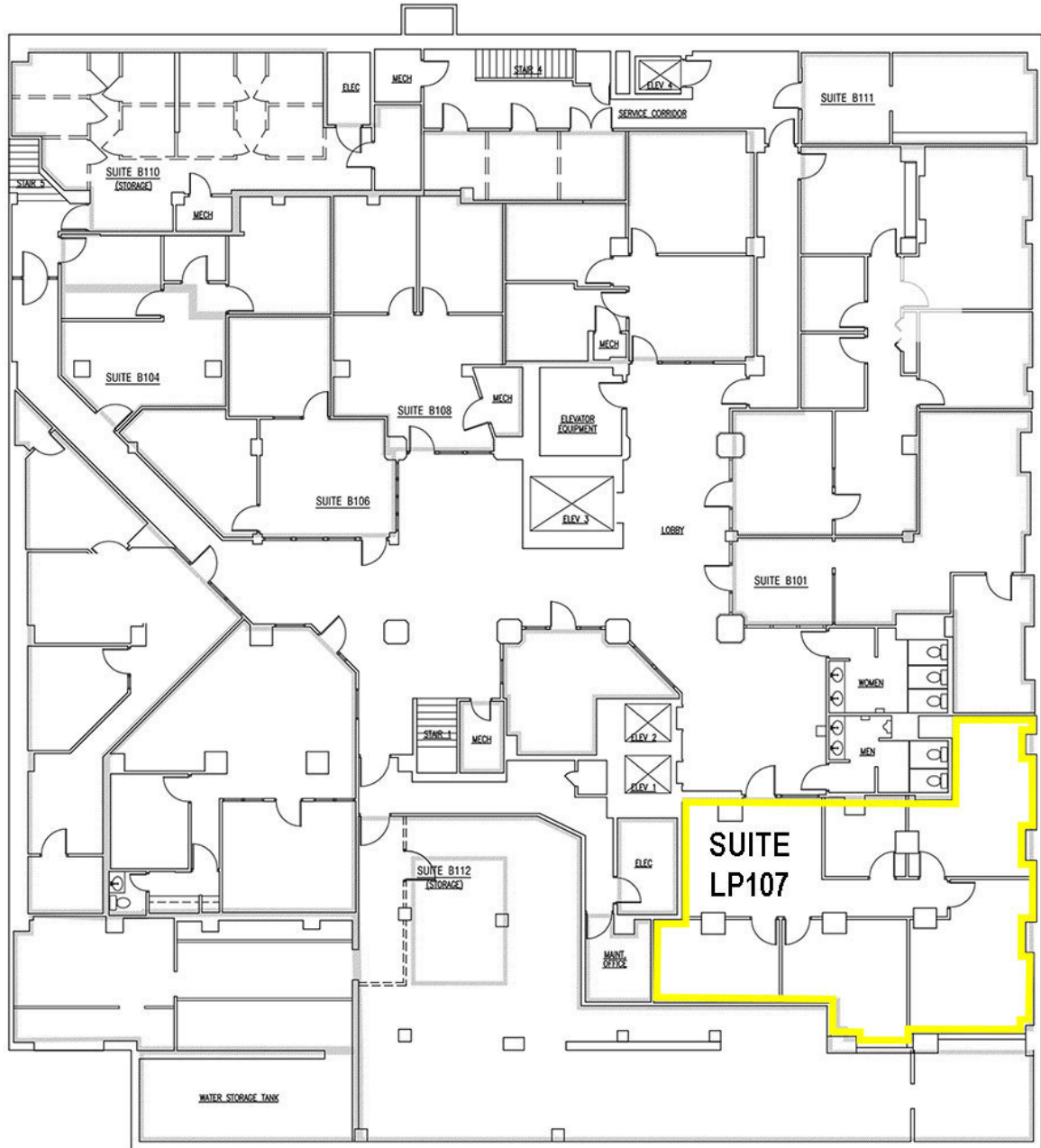
Wendy Shoemaker
wendy@icrellc.com
o / 208.285.2611
c / 208.859.2816



THE HOFF BUILDING

802 W. BANNOCK, BOISE, ID 83702

LOWER PLAZA



OFFICE



INTERMOUNTAIN
COMMERCIAL REAL ESTATE

380 E. Parkcenter Boulevard
Suite 290
Boise, ID 83706
www.icrellc.com
(208) 429.8603 / office / (208) 429-8604 fax

LISTING AGENT:

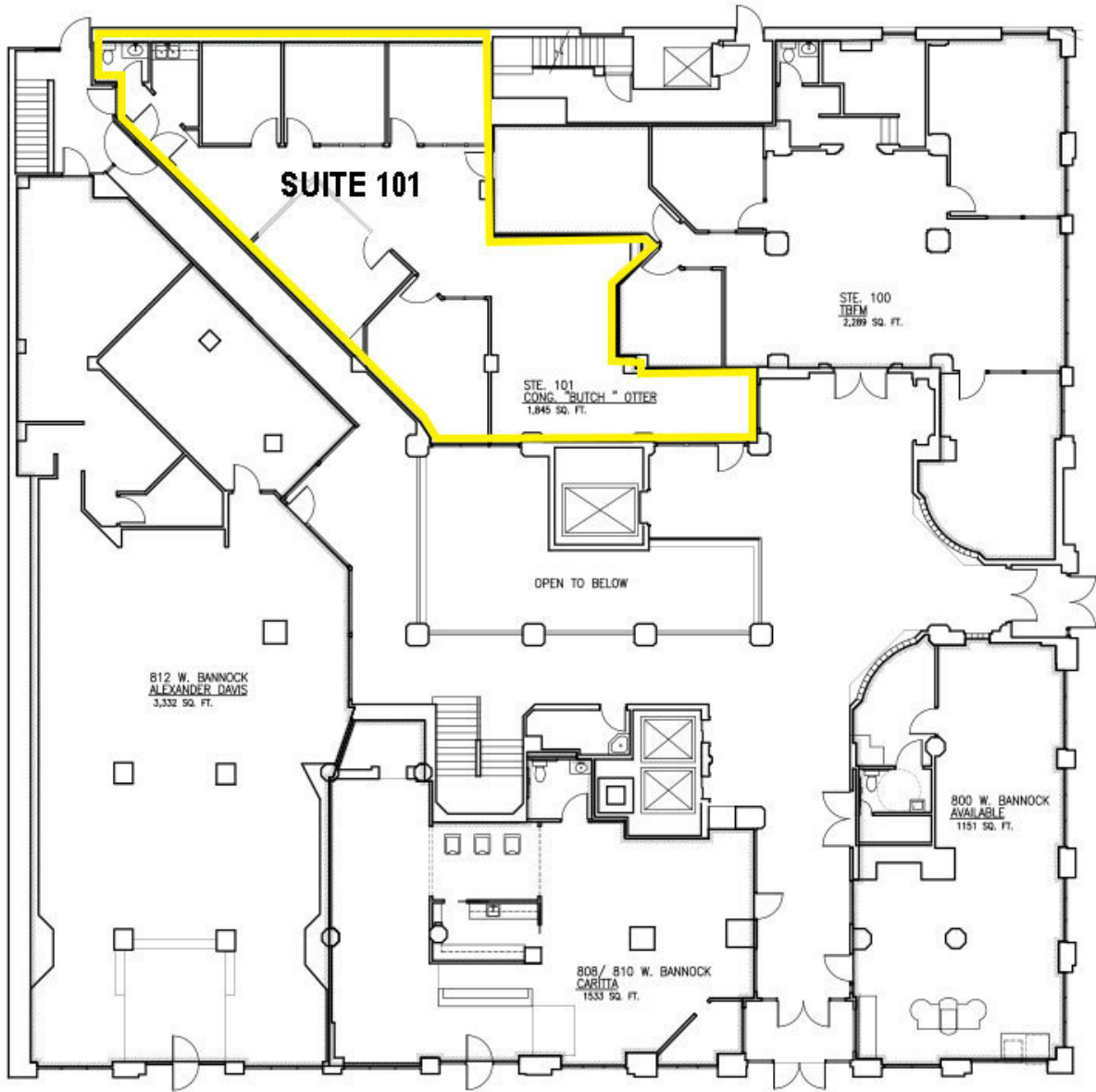
Wendy Shoemaker
wendy@icrellc.com
o / 208.285.2611
c / 208.859.2816



THE HOFF BUILDING

802 W. BANNOCK, BOISE, ID 83702

FIRST FLOOR



FLOOR USEABLE AREA = 13,470 SQ. FT.
SUITES USABLE AREA = 10,150 SQ. FT.

OFFICE



INTERMOUNTAIN
COMMERCIAL REAL ESTATE

380 E. Parkcenter Boulevard
Suite 290
Boise, ID 83706
www.icrellc.com
(208) 429.8603 / office / (208) 429-8604 fax

LISTING AGENT:

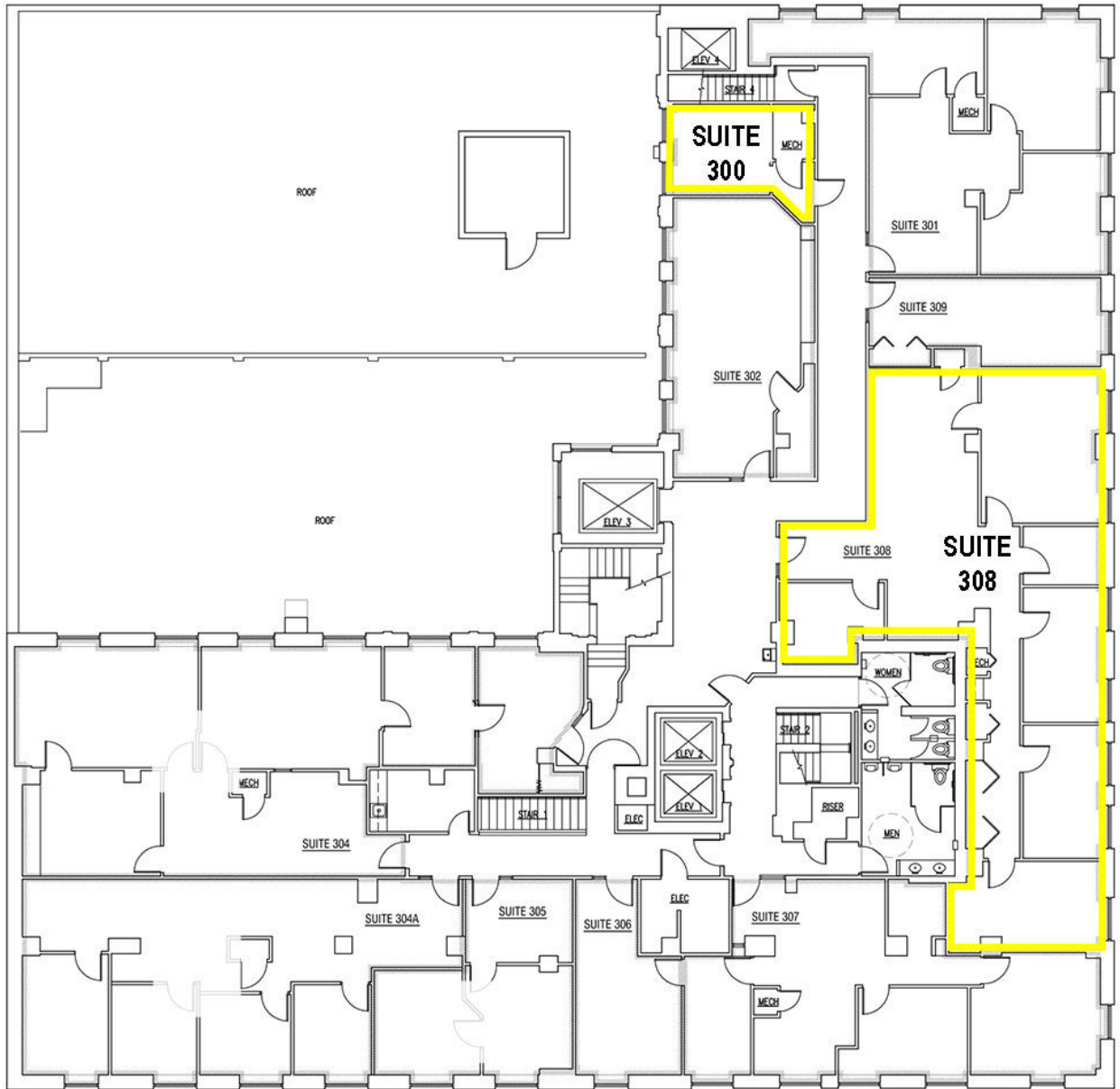
Wendy Shoemaker
wendy@icrellc.com
o / 208.285.2611
c / 208.859.2816



THE HOFF BUILDING

802 W. BANNOCK, BOISE, ID 83702

THIRD FLOOR



OFFICE



INTERMOUNTAIN
COMMERCIAL REAL ESTATE

380 E. Parkcenter Boulevard
Suite 290
Boise, ID 83706
www.icrellc.com
(208) 429.8603 / office / (208) 429-8604 fax

LISTING AGENT:

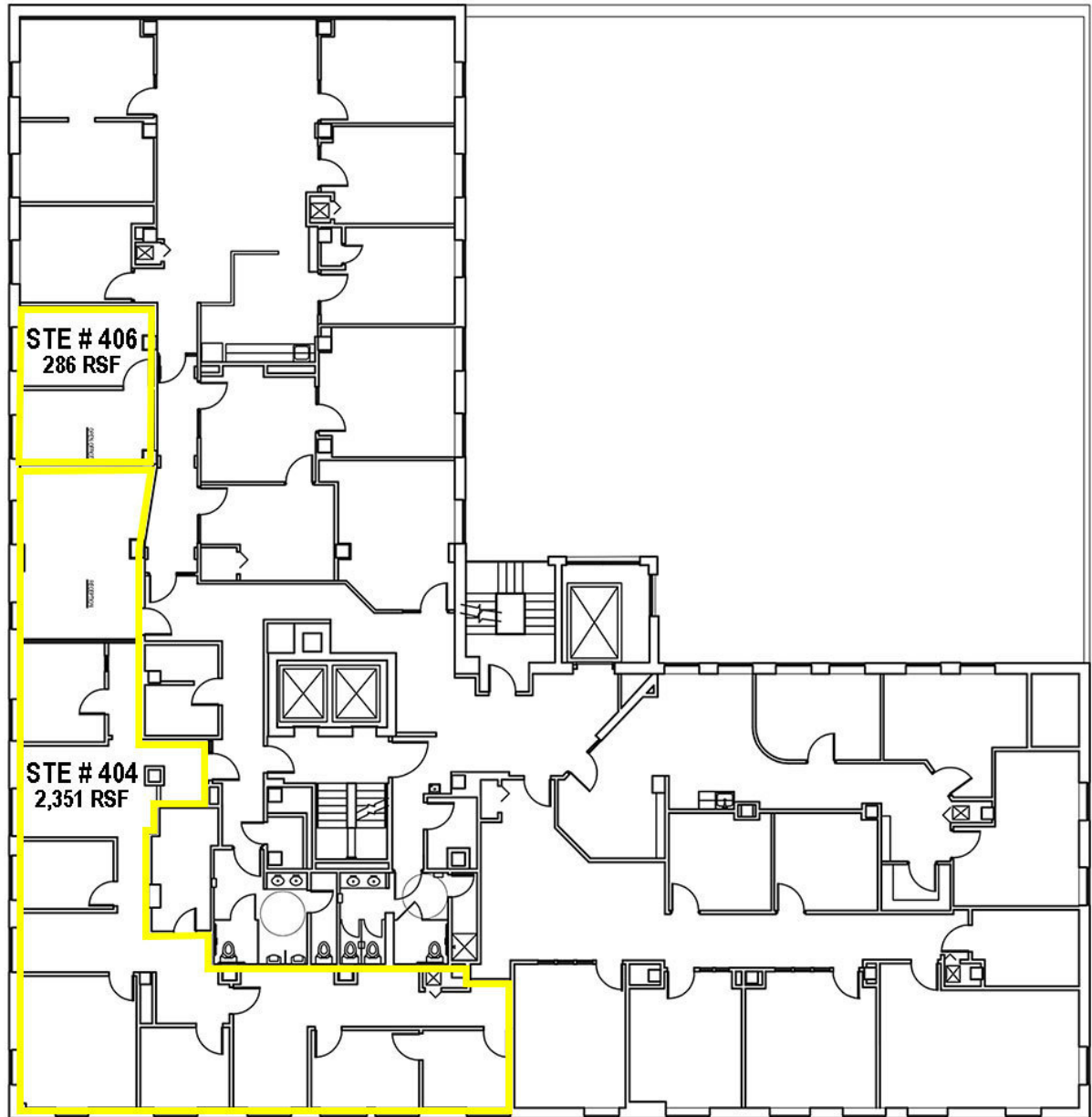
Wendy Shoemaker
wendy@icrellc.com
o / 208.285.2611
c / 208.859.2816



THE HOFF BUILDING

802 W. BANNOCK, BOISE, ID 83702

FOURTH FLOOR



OFFICE



INTERMOUNTAIN
COMMERCIAL REAL ESTATE

380 E. Parkcenter Boulevard
Suite 290
Boise, ID 83706
www.icrellc.com
(208) 429.8603 / office / (208) 429-8604 fax

LISTING AGENT:

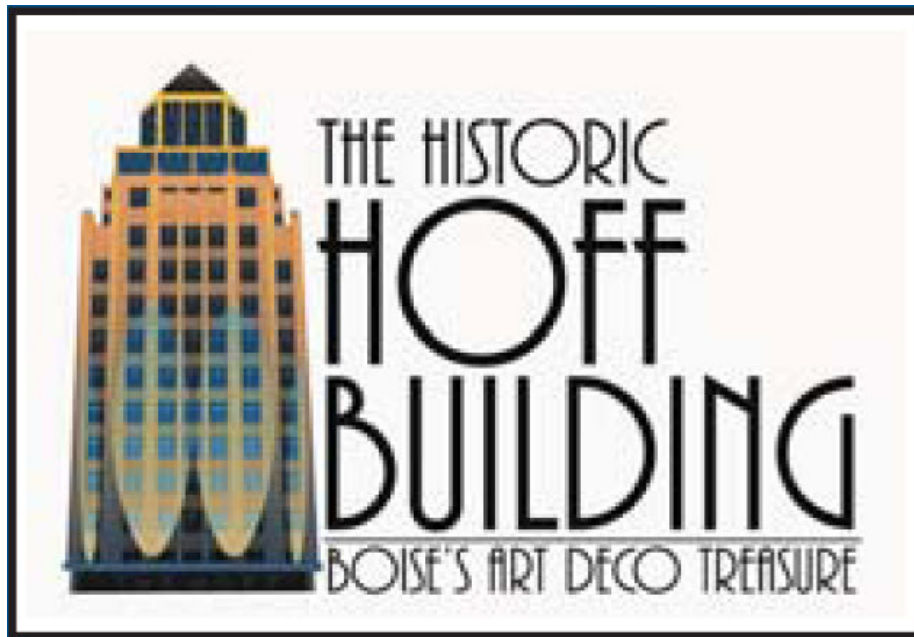
Wendy Shoemaker
wendy@icrellc.com
o / 208.285.2611
c / 208.859.2816



THE HOFF BUILDING

802 W. BANNOCK, BOISE, ID 83702

HISTORIC HOFF BUILDING



OFFICE



INTERMOUNTAIN
COMMERCIAL REAL ESTATE

380 E. Parkcenter Boulevard
Suite 290
Boise, ID 83706
www.icrellc.com
(208) 429.8603 / office / (208) 429-8604 fax

LISTING AGENT:

Wendy Shoemaker
wendy@icrellc.com
o / 208.285.2611
c / 208.859.2816