

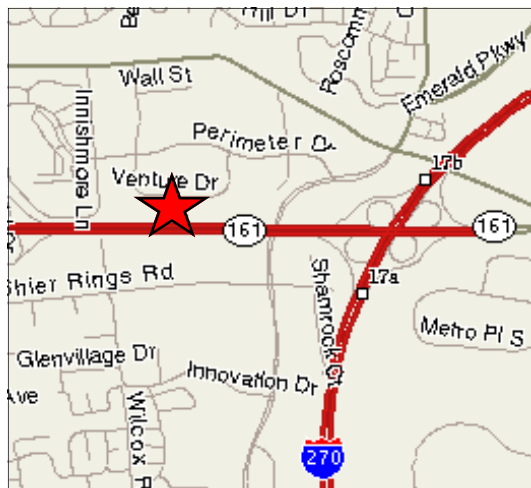


CAPITOL  
EQUITIES

# FOR LEASE

View all of our properties at [capitolequities.com](http://capitolequities.com)

## 5900 VENTURE DRIVE, DUBLIN, OH 43017



### Available Suites

First Floor: 1,317 square feet  
Second Floor: 1,317 square feet

Rental Rate: \$14.50/sf Gross

Utilities: Separately metered. Paid by Tenant.

Parking: Ample on-site parking

Access: 1 mile from I-270.  
Near Avery Road retail/banks.  
At Avery Rd and Perimeter Loop Rd

### Amenities

Great Dublin site with nice amenities in professional office center.

- 4 Offices, Kitchenette, Reception
- Vaulted Ceilings
- Well maintained building with owner/occupant
- First floor suite with easy access

**LIKE TO GET MORE INFO?**  
We'd love to hear from you.

**Todd Kemmerer**

[tkemmerer@capitolequities.com](mailto:tkemmerer@capitolequities.com)  
P: 614.760.5660 x 126

**J.R. Kern**

[jrkern@capitolequities.com](mailto:jrkern@capitolequities.com)  
P: 614.760.5660 x 124

**Capitol Equities Realty**

P: 614.760.5660  
F: 614.798.0015

580 N. Fourth Street, Suite 120  
Columbus, Ohio 43215

[capitolequities.com](http://capitolequities.com)

The information contained herein was furnished by sources believed to be reliable, but it is not guaranteed, warranted or represented by Capitol Equities. The presentation of this property is submitted subject to errors, omissions, change of price or condition prior to sale or lease, or withdrawn without notice.

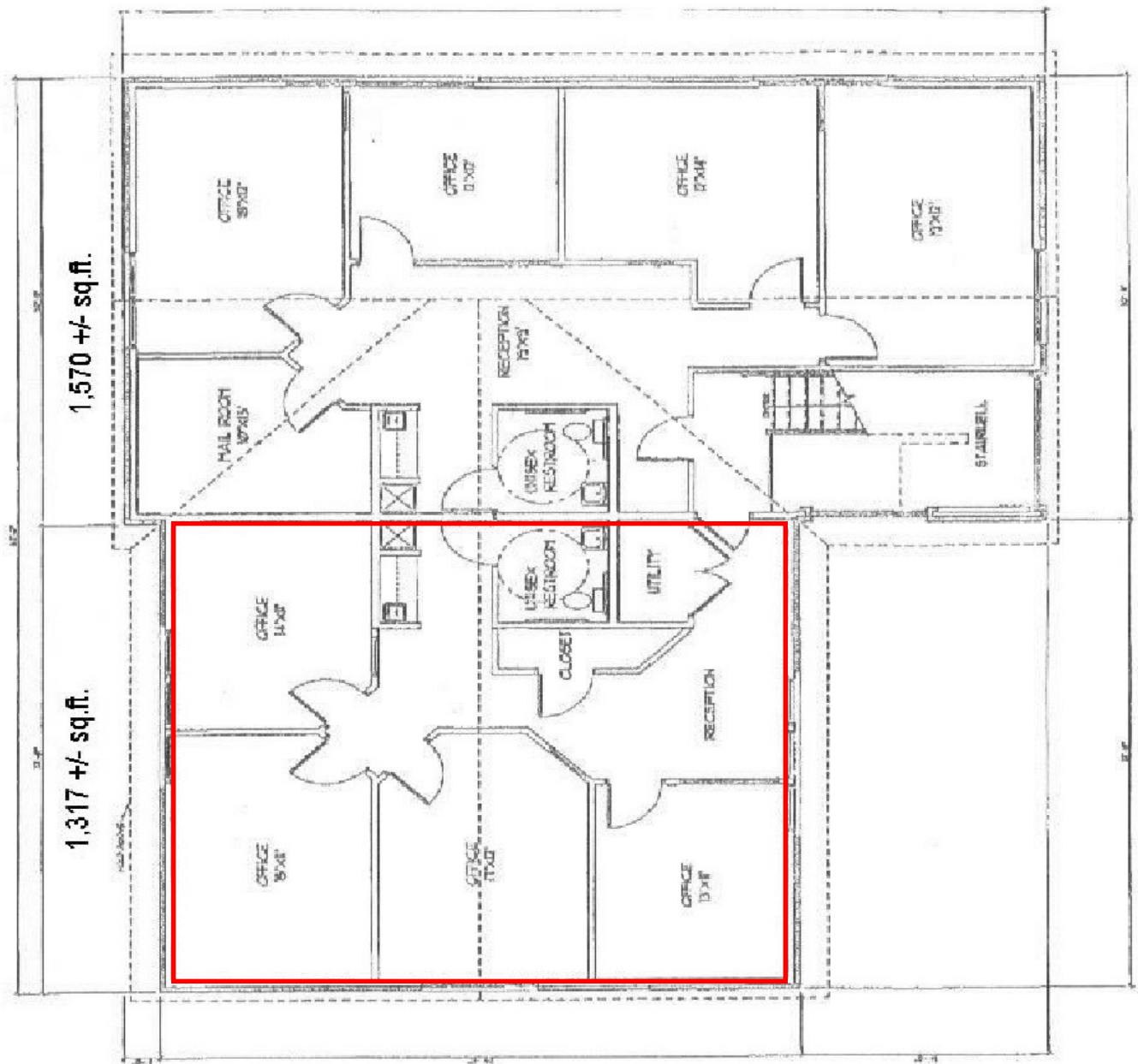


CAPITOL  
EQUITIES

# FOR LEASE

5900 VENTURE DRIVE, DUBLIN, OH 43017

FIRST FLOOR—1,317 +/- sq. ft.





# FOR LEASE

5900 VENTURE DRIVE, DUBLIN, OH 43017

SECOND FLOOR—1,317 +/- sq. ft.

