



**2595 Canyon Blvd**  
 Suite 150, Boulder, CO

**Angela Topel**

angela@gibbonswhite.com  
 (303) 586-5921

www.gibbonswhite.com



[View Map](#)

## Spectacular Central Boulder Location - Office For Sublease

Available Space	2,958 sq. ft.
Lease Rate / sq. ft.	\$17.00 NNN
Expenses / sq. ft.	\$13.78*

\*Not Including Utilities

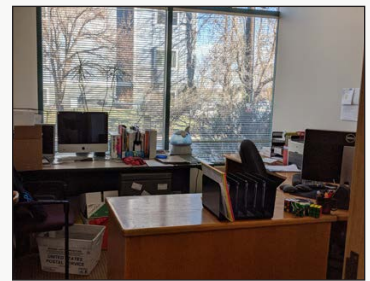
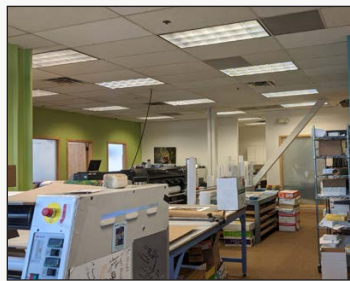
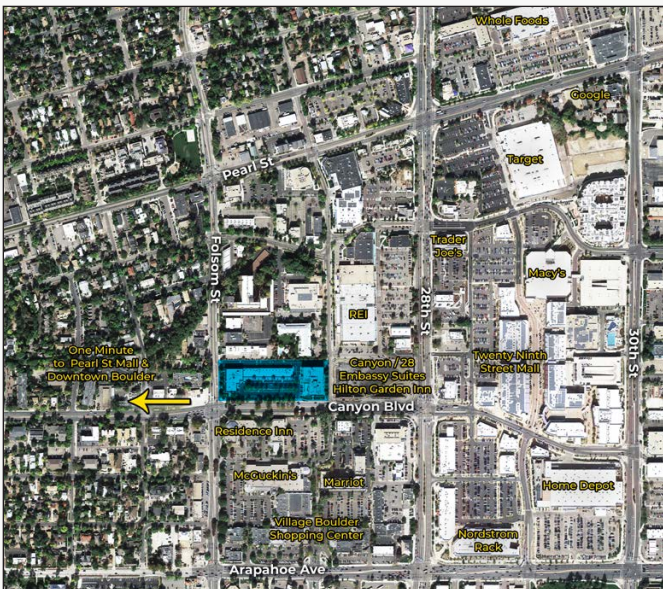
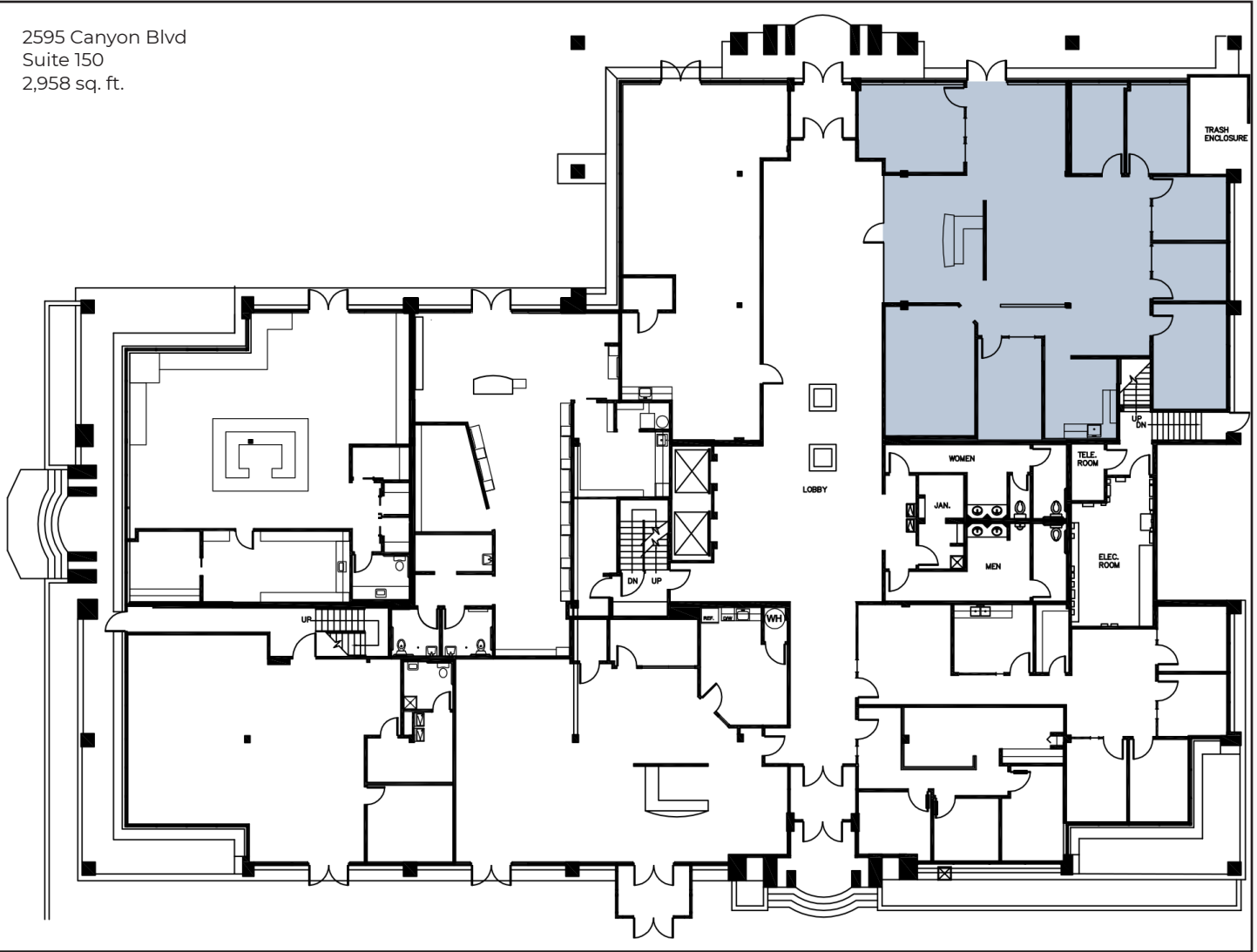
- High Visibility & Great Signage Opportunities
- Fully Built-Out Functional Office Space with 7 Private Offices, a Conference or Clean Room, Kitchen & Substantial Open Space
- Located on Canyon, Just Off 28th Street with Great Proximity to a Variety of Restaurants & Retail Locations
- On-Site Showers & Usable Plazas
- Abundant Visitor Parking in Lot & Along 26th Street
- Sublease Through April 2025

The information included has been obtained from sources believed reliable. While we do not doubt the accuracy of the information, it has not been verified and no guarantee, warranty, or representation is being made.



2305 Canyon Blvd, Suite 200, Boulder, CO 80302 - (303) 442-1040

2595 Canyon Blvd  
 Suite 150  
 2,958 sq. ft.



The information included has been obtained from sources believed reliable. While we do not doubt the accuracy of the information, it has not been verified and no guarantee, warranty, or representation is being made.