

COLUMBIA COURT

12951 BEL-RED ROAD • BELLEVUE, WA

LEASE TERMS OF 6 MONTHS OR UNTIL JANUARY 2025 AVAILABLE



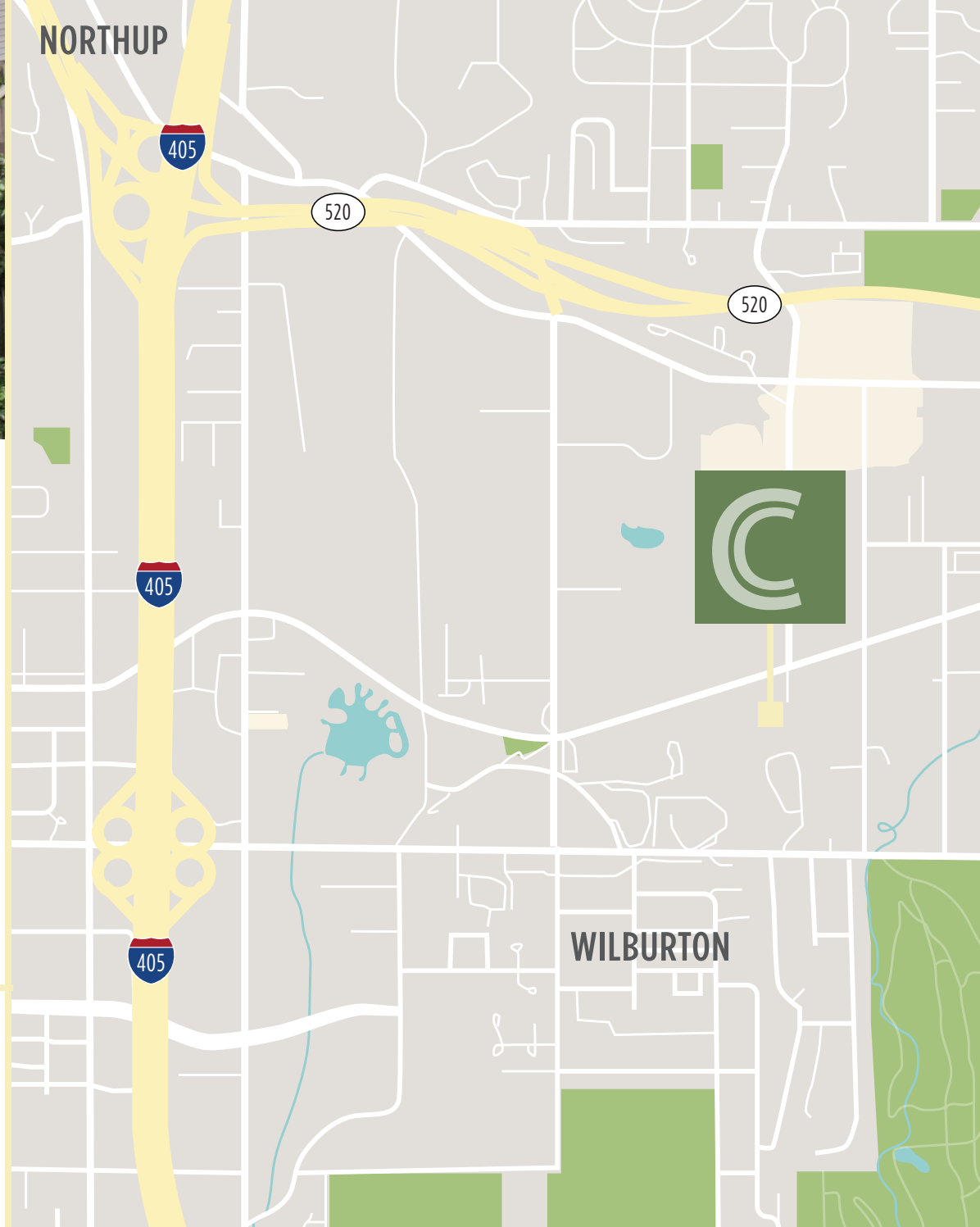
BUILDING FEATURES

- » Bel-Red Road at 130th Ave NE
- » Located south of SR-520 and east of I-405
- » One acre of park-like setting
- » 4/1,000 SF parking
- » Free covered parking
- » Lease Rate: \$30.00/RSF, Full Service
- » **SHORT TERM LEASES AVAILABLE**

Landlord is very motivated to get Columbia Court 100% leased. **Lowest office rates in Bellevue!**

AVAILABLE SUITES

Suite 185	670 RSF	Available Now
-----------	---------	---------------



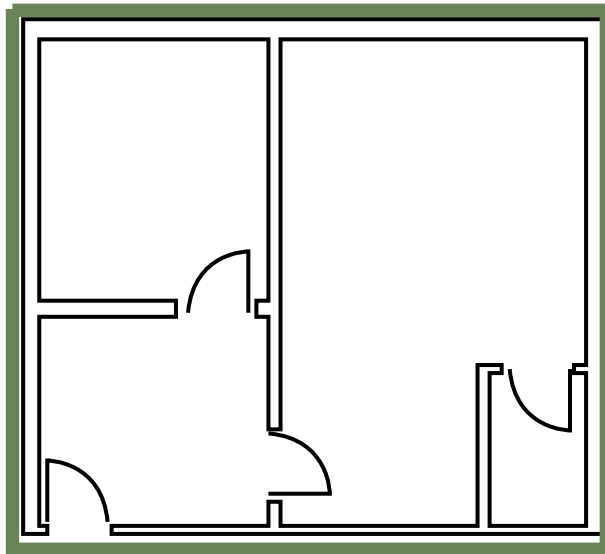
The information contained herein has been given to us by the owner or sources that we deem reliable. We have no reason to doubt its accuracy, but we do not guarantee it. Prospective tenants should carefully verify all information contained herein.

COLUMBIA COURT

12951 BEL-RED ROAD • BELLEVUE, WA

SUITE 185

- » 670 RSF
- » Available Now
- » One private office and open work space
- » Short term leases only



For more information or to schedule a tour, please contact
TYLER SLONE | 425.274.4281 | slone@broderickgroup.com
ERIC HAEHL | 425.646.5266 | haehl@broderickgroup.com

10500 NE 8th Street, Suite 900
Bellevue, Washington 98004
main | 425.646.3444
www.broderickgroup.com

BRODERICK
• GROUP •

Commercial Real Estate Services