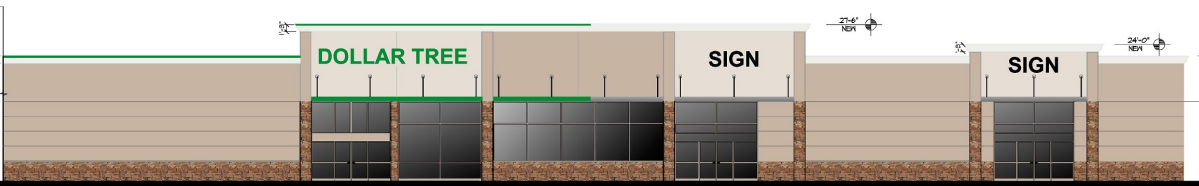


PRIME ±15,000 SF JUNIOR ANCHOR SPACE AND PAD FOR LEASE

NEC Riverside Dr. & Euclid Ave., Ontario, CA



PROPOSED FRONT ELEVATION



LEE & ASSOCIATES
COMMERCIAL REAL ESTATE SERVICES
Corporate DRE#: 01048055
www.lee-associates.com

Nick Wirick | 951.276.3636 | DRE#: 01304661 | nwirick@lee-associates.com
Chris Beauchamp | 951.276.3675 | DRE#: 01982753 | cbeauchamp@lee-associates.com

No warranty or representation has been made to the accuracy of the foregoing information. Terms of sale or lease and availability are subject to change or withdrawal without notice. Lee & Associates Commercial Real Estate Services, Inc. - Riverside.






PRIME ±15,000 SF JUNIOR ANCHOR SPACE AND PAD FOR LEASE

NEC Riverside Dr. & Euclid Ave., Ontario, CA

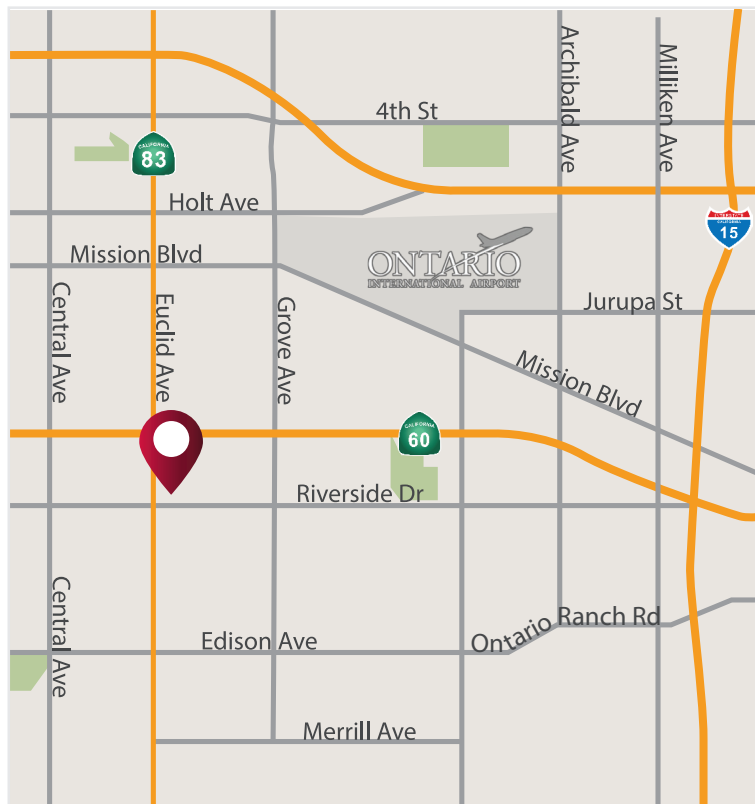
PROPERTY FEATURES

- ±15,000 SF of Junior Anchor Space and ±1.02 Acre Pad Available for Lease
- Located at the Corner Signalized Intersection of Riverside Dr. & Euclid Ave. with over 41,000 Cars Per Day
- Major Renovations Planned
- Monument Signage Available

3 MILE DEMOGRAPHICS 2019

	Population:	134,459 Residents
	Average HH Income:	\$81,782.00
	Median Age:	33 Years
	Adjusted Daytime Demographics:	86,241
	Median Home Values:	\$375,476.00

JOIN AREA TENANTS:



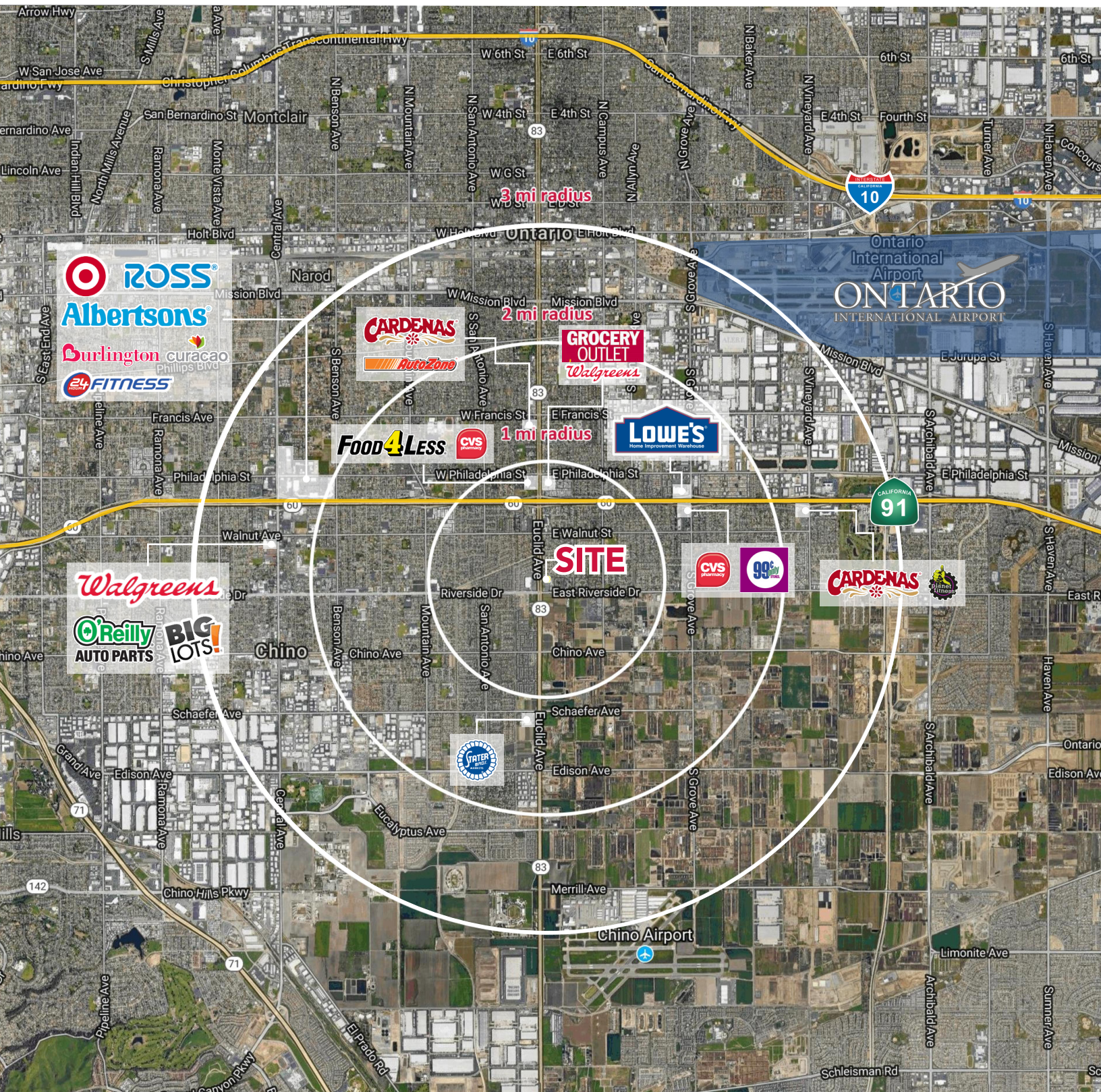
LEE & ASSOCIATES
COMMERCIAL REAL ESTATE SERVICES
Corporate DRE#: 01048055
www.lee-associates.com

Nick Wirick | 951.276.3636 | DRE#: 01304661 | nwirick@lee-associates.com
Chris Beauchamp | 951.276.3675 | DRE#: 01982753 | cbeauchamp@lee-associates.com

No warranty or representation has been made to the accuracy of the foregoing information. Terms of sale or lease and availability are subject to change or withdrawal without notice. Lee & Associates Commercial Real Estate Services, Inc. - Riverside.

PRIME ±15,000 SF JUNIOR ANCHOR SPACE AND PAD FOR LEASE

NEC Riverside Dr. & Euclid Ave., Ontario, CA



COMMERCIAL REAL ESTATE SERVICES

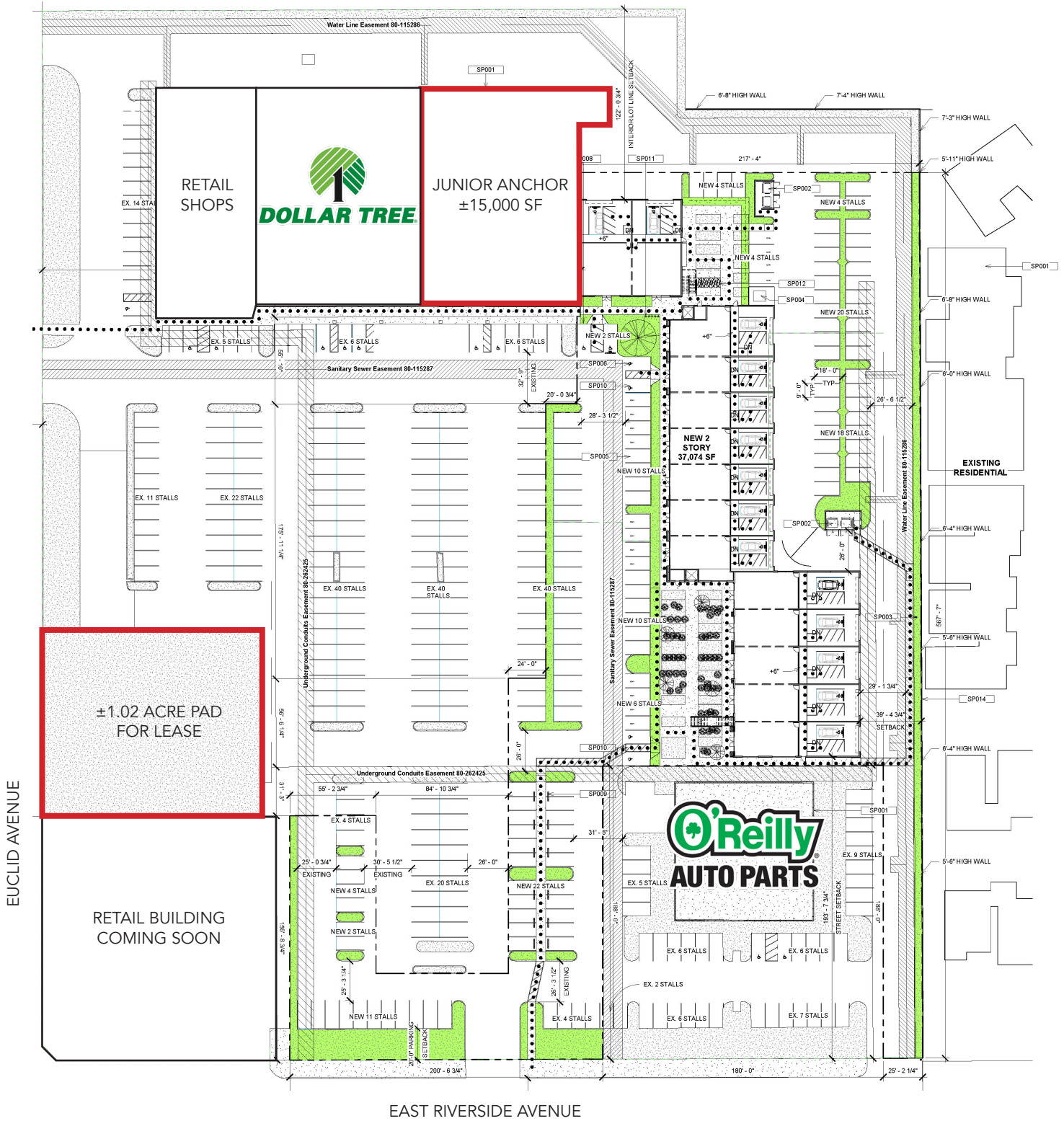
Corporate DRE#: 01048055
www.lee-associates.com

Nick Wirick | 951.276.3636 | DRE#: 01304661 | nwirick@lee-associates.com
Chris Beauchamp | 951.276.3675 | DRE#: 01982753 | cbeauchamp@lee-associates.com

No warranty or representation has been made to the accuracy of the foregoing information. Terms of sale or lease and availability are subject to change or withdrawal without notice. Lee & Associates Commercial Real Estate Services, Inc. - Riverside.

PRIME ±15,000 SF JUNIOR ANCHOR SPACE AND PAD FOR LEASE

NEC Riverside Dr. & Euclid Ave., Ontario, CA



COMMERCIAL REAL ESTATE SERVICES

Corporate DRE#: 01048055

www.lee-associates.com

Nick Wirick | 951.276.3636 | DRE#: 01304661 | nwirick@lee-associates.com

Chris Beauchamp | 951.276.3675 | DRE#: 01982753 | cbeauchamp@lee-associates.com

No warranty or representation has been made to the accuracy of the foregoing information. Terms of sale or lease and availability are subject to change or withdrawal without notice. Lee & Associates Commercial Real Estate Services, Inc. - Riverside.