



### LOCATION

Building B  
15500 SW 72nd Avenue  
Suite 100  
Portland OR 97224

### TOTAL SQ.FT.

4,607 sq.ft.  
2,820 sq.ft.

### DRIVE IN DOORS

1

### CLEAR HEIGHT

14

### FEATURES

Immediate access to I-5  
End cap space

### RATE

\$.65/sq.ft. - Shell  
\$.90/sq.ft. - Office  
NNN

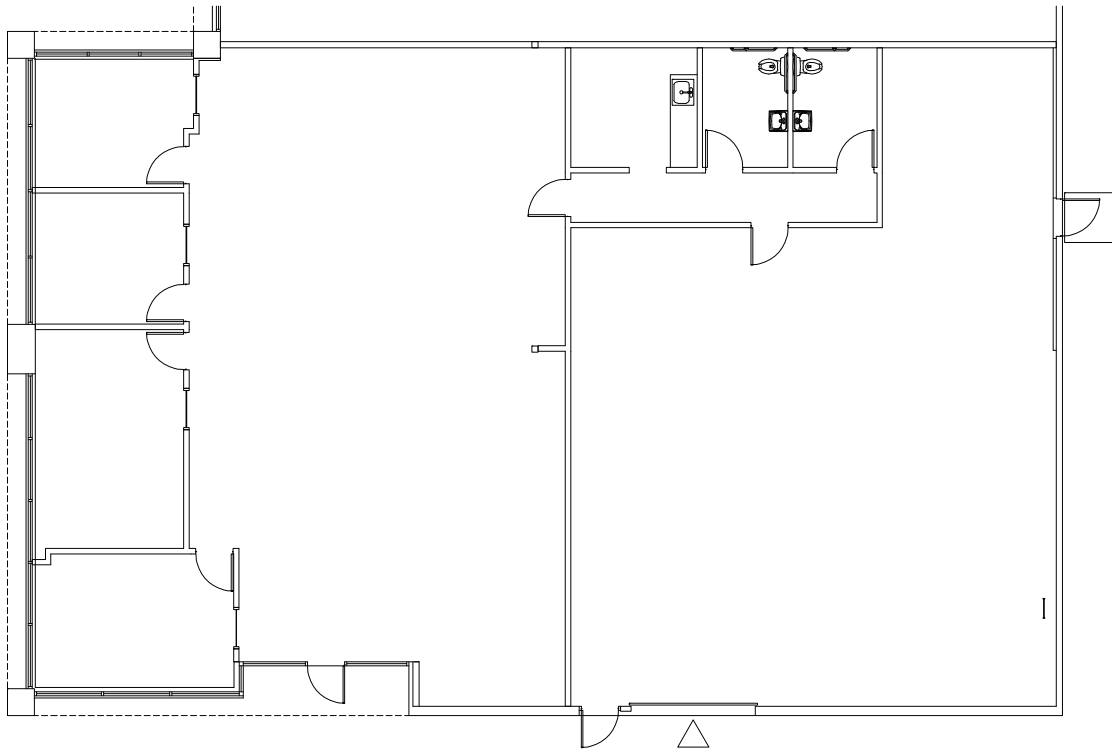
### LEASING CONTACT

Sam Briggs  
samb@pactrust.com  
503-624-6300

Dave Hicks  
daveh@pactrust.com  
503-624-6300



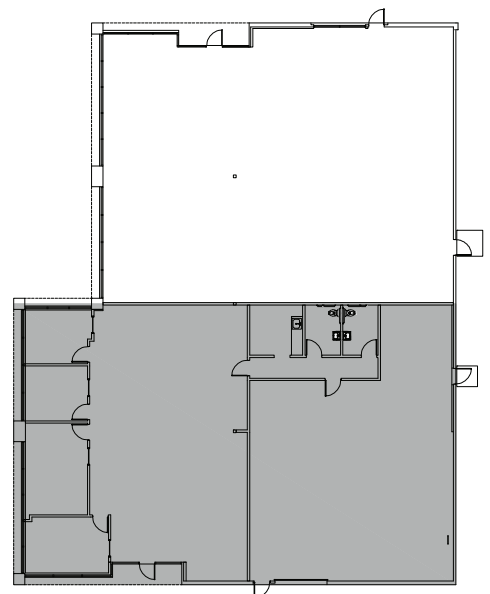
**TOTAL 4,607 SQ FT**  
**OFFICE 2,820 SQ FT**  
**CLEAR HEIGHT 14 FT**



PACIFIC CORPORATE CENTER  
 Portland, OR 97224



▽ GRADE ACCESS  
 ▼ DOCK ACCESS



## BUILDING PLAN

15350 SW Sequoia Pkwy Suite 300 Portland OR 97224 • 503.624.6300 • [pactrust.com](http://pactrust.com)

*The square footage and rates quoted herein are subject to change. Square footage and rates are finalized with a signed lease agreement.*

