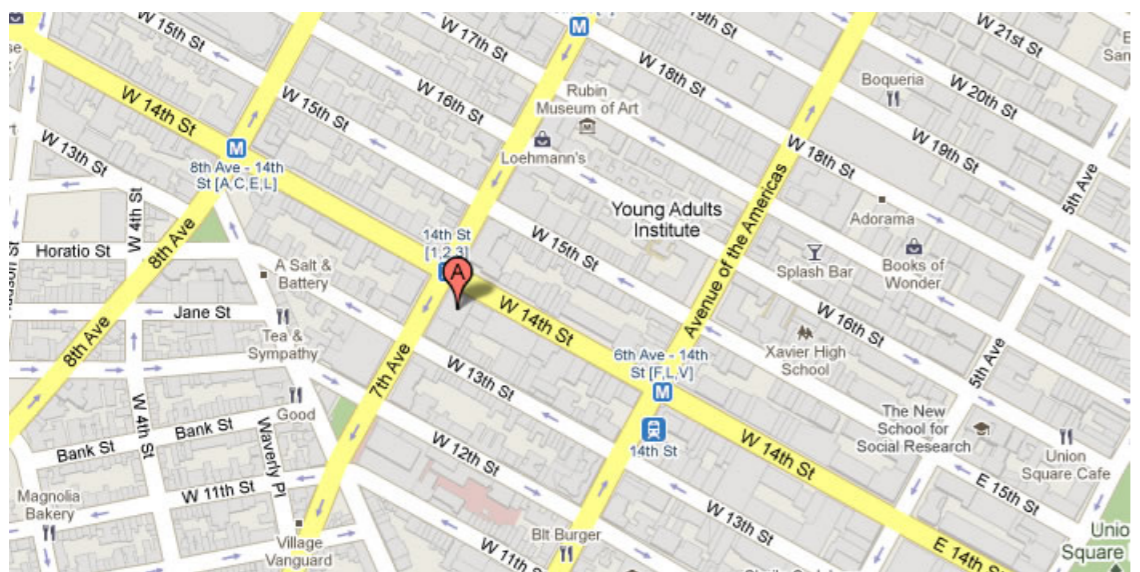




154 WEST 14TH STREET, New York, NY 10011



166,626.00 SF

Up To 550 SF Available

This glazed, colored terra cotta office building combines the styles of Art Nouveau and Art Deco. Features attended lobby, new elevator cabs operable windows and subway station at street corner

Built: 1913 Architect: Herman Lee Meader

Tenants

GROVE/ATLANTIC, INC.

For more information call

1-212-249-1550

KOEPEL ROSEN

40 East 69th Street

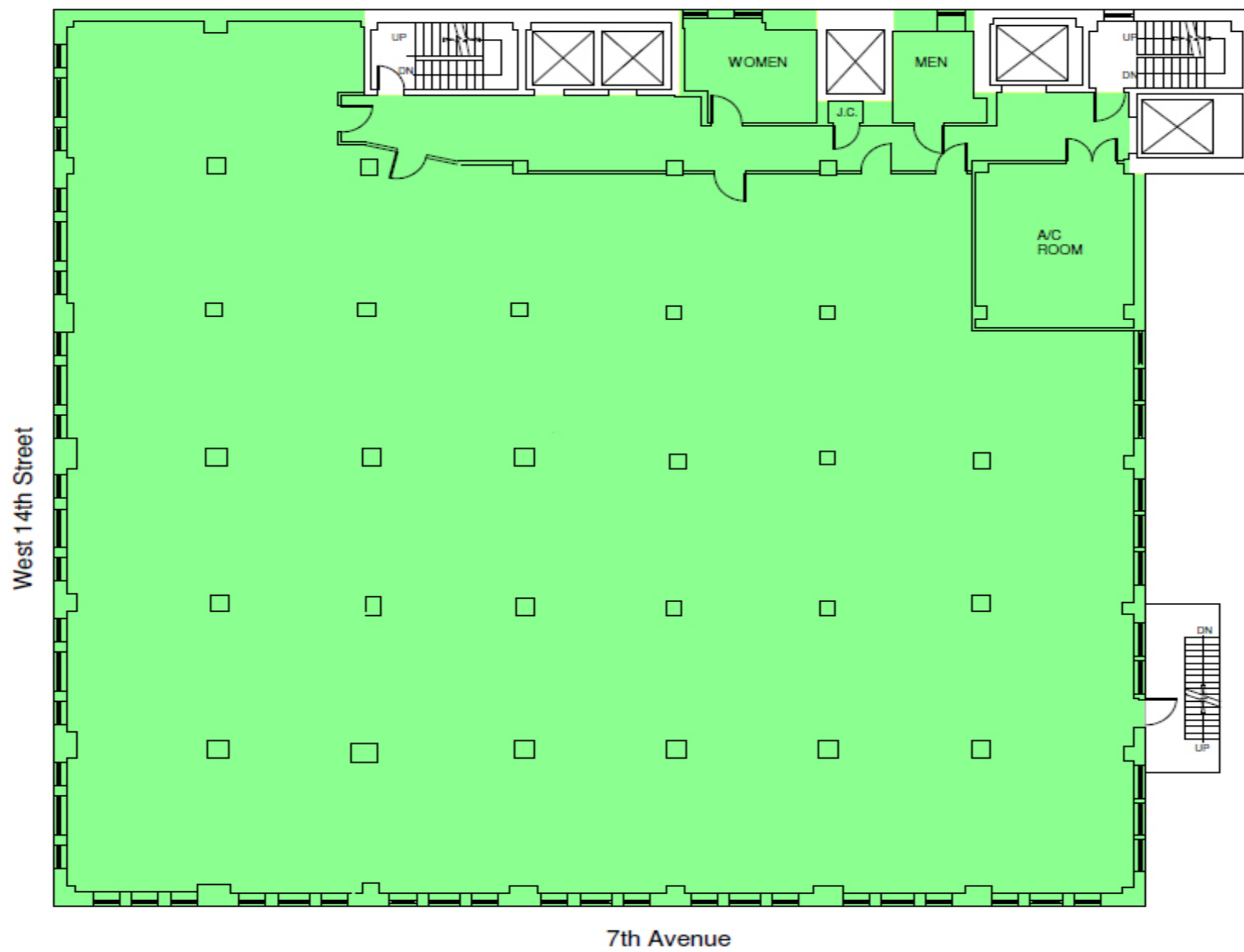
New York, NY 10021

[dkoepel@koepelrosen.com](mailto:dkoepel@koepelrosen.com)

**154 West 14th Street**



**Typical Floor Plan**



Note: All dimensions and conditions are approximate and for information only

**K R** Koeppel Rosen LLC  
 40 East 69th Street  
 New York, NY 10021  
 212-249-1550  
 www.koeppelrosen.com

Scale: NTS  
 Date: February .18, 2016



For more information call  
 1- 212- 249- 1550  
 KOEPEL ROSEN  
 40 East 69th Street  
 New York, NY 10021  
 dkoeppel@koeppelrosen.com