

11502 N 56th Street, Temple Terrace, FL 33617



Space: 3,200 SF mol

Available: 7/1/2019

C.A.M.: \$5.89 per SF (2019)

Rental Rate: \$19.00 per SF

Pylon Signage: Yes

Demographics: 1 Mile | Population 12,270, Daytime 5,236, Av. HH Inc. \$48,120

3 Mile | Population 11,619, Daytime 45,221, Av. HH Inc. \$37,541

Traffic Count: 65,500 AADT - E Fowler

35,000 AADT - N 56th Street

*Use restrictions subject to anchor tenant leases.

For additional information or to schedule an appointment to tour the property, please contact:

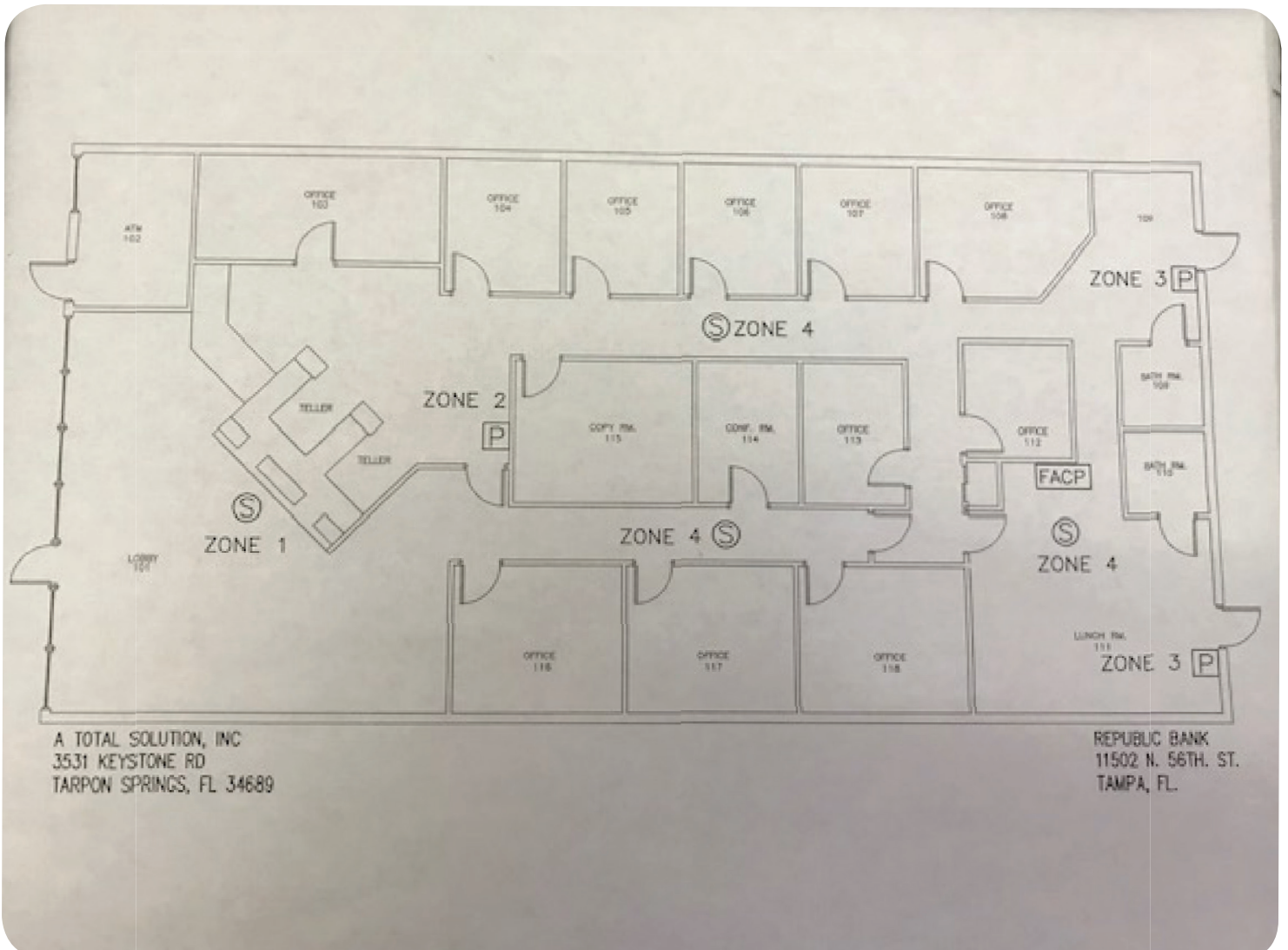
Kevin Platt, REALTOR®

813.839.3800 ext. 3458

Smith & Associates Real Estate, Inc does not guarantee any representations. Important facts should be confirmed by buyer.

Temple Terrace | Retail Lease Space FOR LEASE

Floor Plan



Temple Terrace | Retail Lease Space FOR LEASE

Aerial



May 14, 2019



0 245 490 980 ft

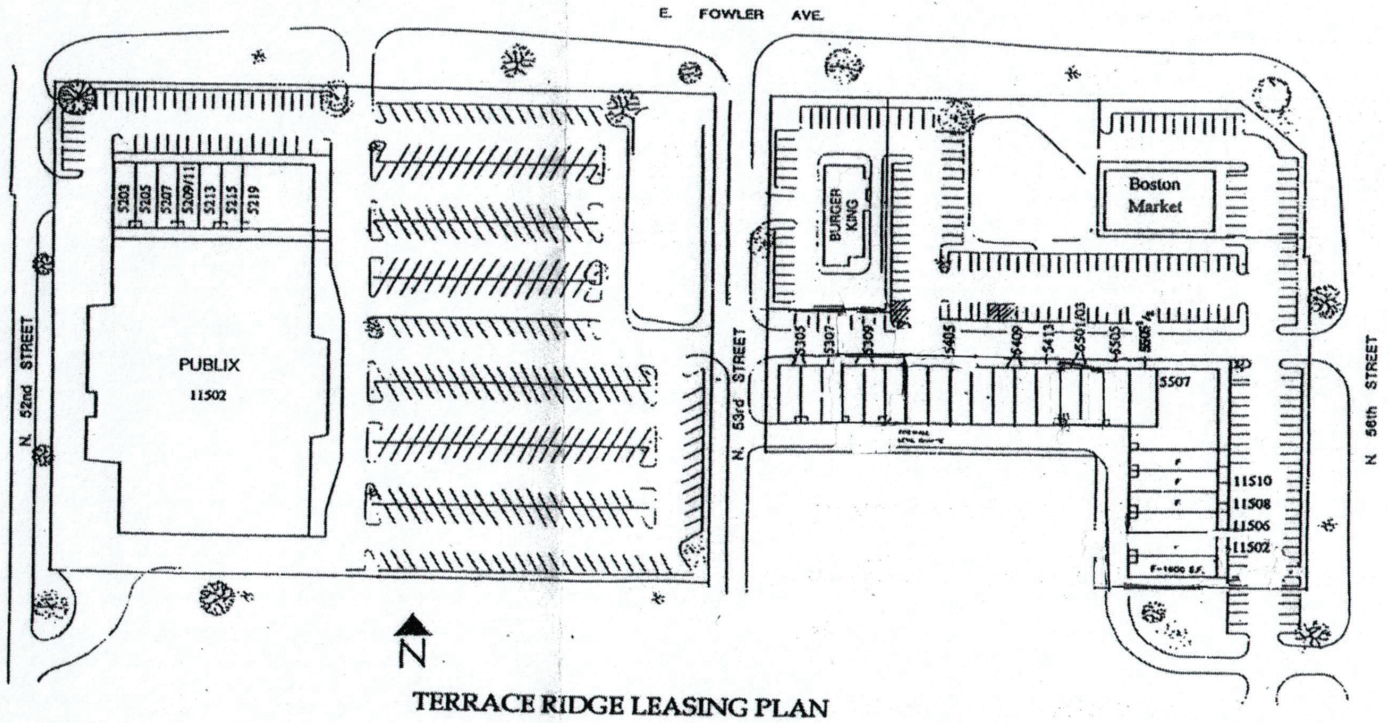
Bob Henriquez, CFA

Hillsborough County Property Appraiser
This map is for assessment purposes only.
It is not a survey.

2019 Aerials

Temple Terrace | Retail Lease Space FOR LEASE

Survey



Temple Terrace | Retail Lease Space FOR LEASE

Photos

