

16021 KAIROS ROAD

South Chesterfield, Virginia 23834

FOR LEASE



OFFICE SPACE AVAILABLE FOR LEASE IN SOUTH CHESTERFIELD

PROPERTY HIGHLIGHTS:

- ▶ Office Space Available
- ▶ 4,165 SF Suite Available
 - Suite B: 1,925 SF
 - Suite C: 2,240 SF
 - (Suites can be combined or leased separately)
- ▶ Suite B is comprised of open space in the front with two restrooms and a kitchen/breakroom in the back. Suite C is a former chiropractic office with multiple offices, restrooms and breakroom.
- ▶ Conveniently located just off I-95 (Exit 58) & US Route 1 near the signalized intersection of Woods Edge Road.
- ▶ Centrally located to easily service all of Richmond and Tri-Cities markets.



Nathan S. Jones, IV

nathan.jones@domcommercial.com

855.530.2300

domcommercial.com

Follow us on:

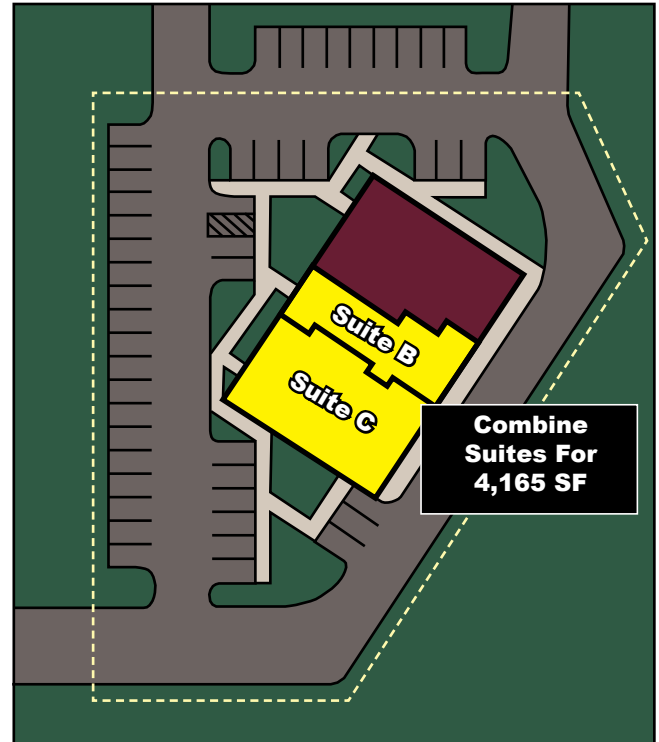
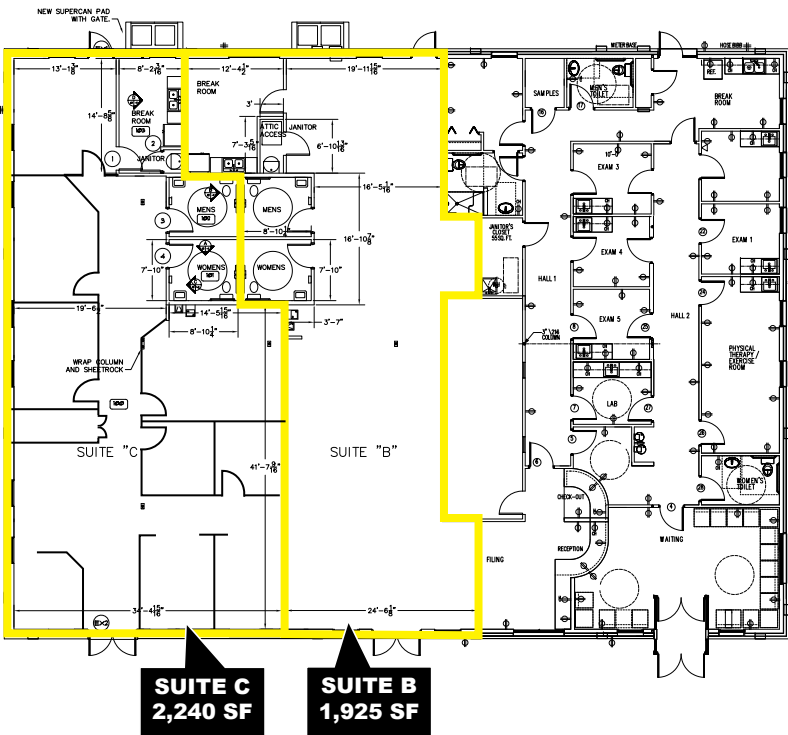
16021 KAIROS ROAD

South Chesterfield, Virginia 23834

FOR LEASE



SPACE AVAILABLE (SUITES CAN BE COMBINED)



Nathan S. Jones, IV
nathan.jones@domcommercial.com
855.530.2300
domcommercial.com