

Commercial Parcel

For Sale



Location: Bridge City Boulevard at the Huey P. Long Bridge
(down river side)
Bridge City, LA

Sales Price: \$265,000.00

Parcel Size: 135'/150' x 500'
73,749 Sq. Ft.
1.693 Acres

- Zoned Commercial C2, CPZ.
- Utilities on Hooter Road.
- This Parcel is accessible from Hooter Road.
- There is a parcel on Bridge City Blvd. that is owned by a relative.
- There is also a vacant parcel abutting subject that fronts Hooter Road.
- See aerial & site plan on reverse.

Listing Agent: Lloyd Giardina
504-236-6517
lloydgiardina@bellsouth.net

**JACK STUMPF
& ASSOCIATES, INC.**

COMMERCIAL REAL ESTATE SERVICES

1700 Central Boulevard
Harvey, Louisiana 70058
(504) 366-6800
www.jackstumpf.com

The information presented herein has been furnished by the owner or obtained from sources we deem reliable. No warranties or representations, either expressed or implied are made as to the accuracy of the data provided, and same is subject to error, omission, change of price, and/or conditions of availability without notice.

NOTES

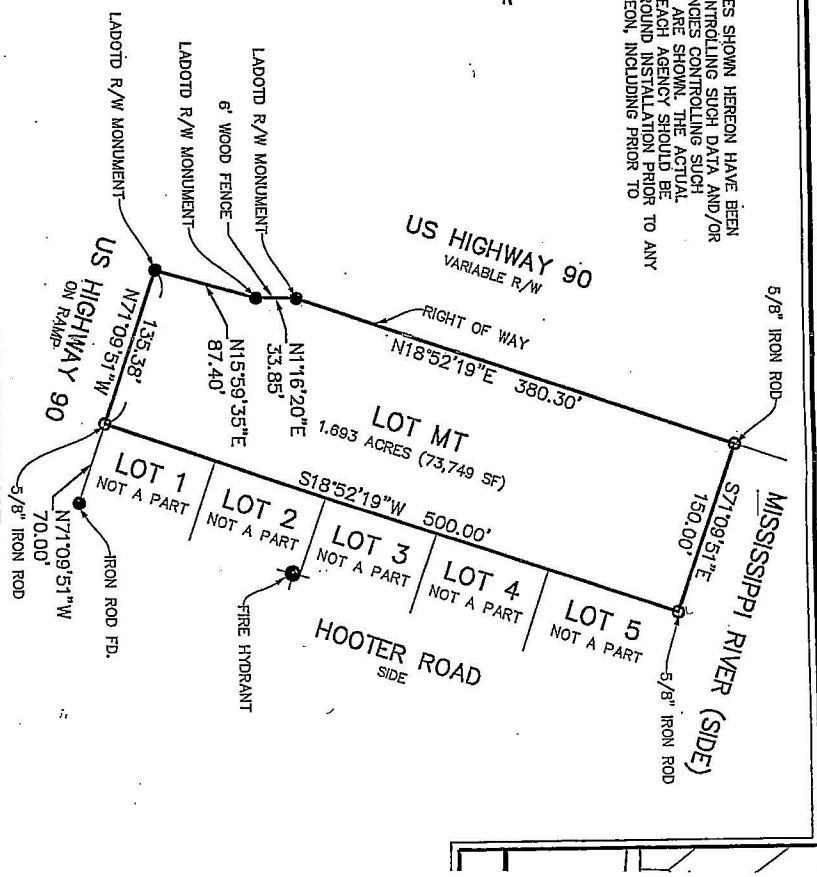
VISIBLE UTILITIES SHOWN HEREON HAVE BEEN
 AGENCIES CONTROLLING SUCH DATA AND/OR
 BY THE AGENCIES CONTROLLING SUCH
 OF LOCATIONS ARE SHOWN. THE ACTUAL
 OWN HEREON. EACH AGENCY SHOULD BE
 ITS UNDERGROUND INSTALLATION PRIOR
 S SHOWN HEREON, INCLUDING PRIOR TO

38-11-2
 T REVIEW
 ED BY THE

ED THE
 ON SAID
 IN THIS
 S'S TITLE
 ARE NOT
 ONNS ON
 VENANTS
 Y ARE

ABILITY
 E
 RESULT OF

own on
 at least
 from the
 on the
 compiling



SURVEY REFERENCE

1) HUEY P. LONG BRIDGE WIDENING STATE PROJECT NOS. 005-10-0037, 063-04-0035, 063-03-0091, 008-01-0021, 008-25-0001, 008-02-0064, 006-30-0041 - SURVEY PER STEPHEN P. FLANN - DATED SEPTEMBER 19, 2006.

2) SURVEY OF A PORTION OF THE MEHNERT TRACT, SECT. 3, T-13-S, R-23-E, BY BFM CORPORATION DATED 03/04/1999

BEARINGS BASED ON REFERENCE MAP 1.

RESUBDIVISION OF
 A PORTION OF THE MEHNERT TRACT, INTO LOT MT
 SECTION 3, T-13-S, R-23-E
 SOUTHEAST DISTRICT OF LOUISIANA
 WEST OF MISSISSIPPI RIVER - WESTWINGO
 JEFFERSON PARISH, LA.

F & C INVESTMENTS, LLC

Professional Land Surveyors
 534 WILLIAMS BOULEVARD
 E-mail: bircorp@meahsurvey.com
 (504) 740-4674
 Fax: (504) 740-4685
 CITY OF KENNER
 JEFFERSON PARISH, LOUISIANA, 70062

