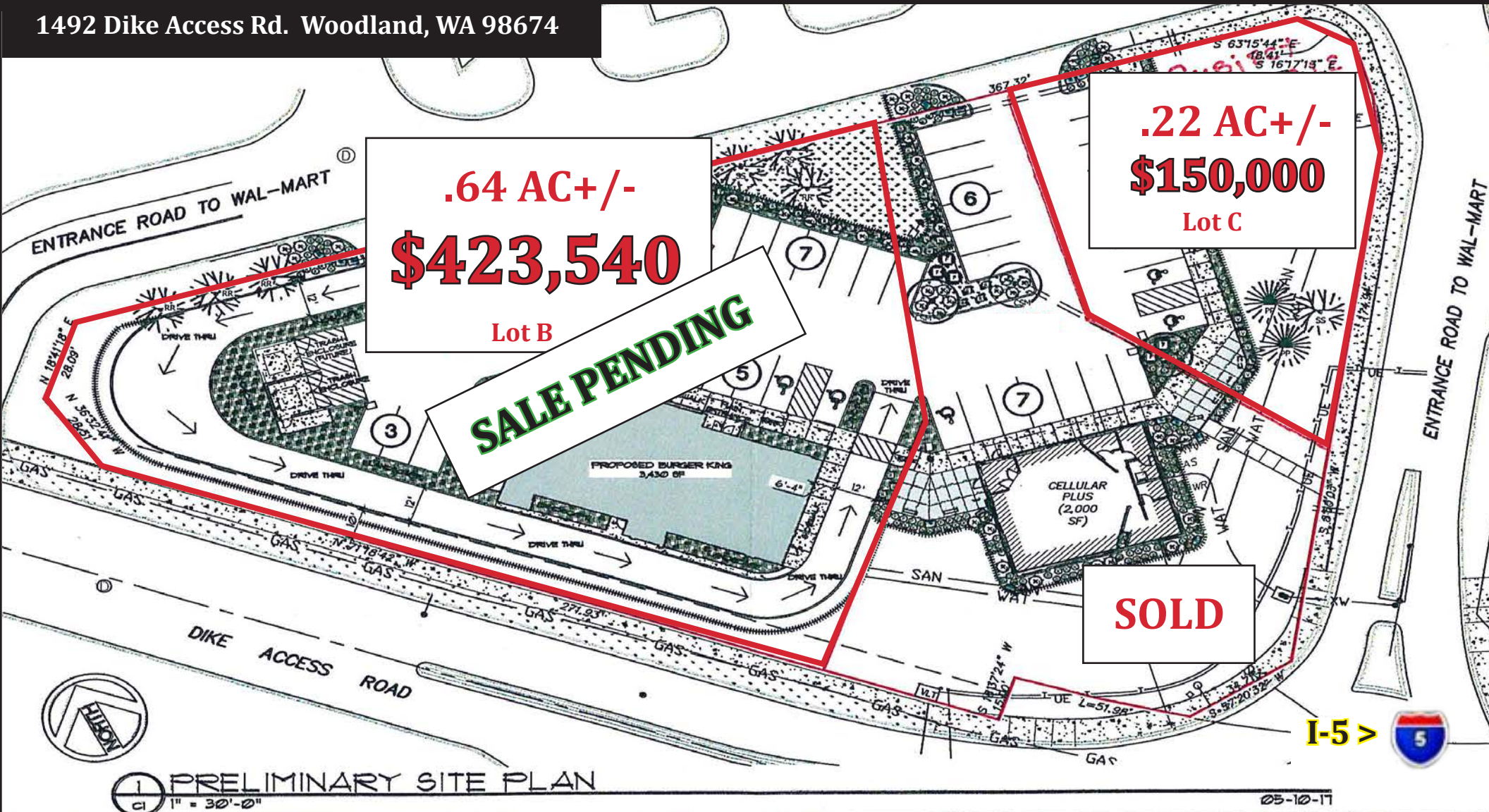


FOR SALE | HWY COMMERCIAL .22AC LOT SHOVEL READY

1492 Dike Access Rd. Woodland, WA 98674



Kelly D Shea Broker
Commercial/ Industrial Specialist
360.823.5110 Office
360.921.3710 Cell
Kelly@SheaCRE.com

2018 Top Producer

View Kelly's Listings

www.SheaCRE.com



MAJ COMMERCIAL
REAL ESTATE

WHILE THE INFORMATION PROVIDED IS NOT GURANTEED IT HAS BEEN OBTAINED FROM SOURCES WE DEEM RELIABLE.

Parcel Information



- 1 Buildable Lot Available, 3rd Lot is Sold and Currently Built Out as Cellular Plus
- .64+/- AC, 28,236+/- SF \$423,540 (\$15 SF) West Parcel 'B' Prop. Bldg 4,000 SF
- .22+/- AC, 10,000+/- SF \$150,000 (\$15 SF) East Parcel 'C' Bldg. is 2,000 SF
- Shovel Ready
- Zoned Hwy Commercial
- Located at I-5 Exit 22, Entrance to the WalMart Super Store
- Taco Bell Across Street to East at Round-A-Bout
- Has Preliminary/ Proposed Site Plan Done in 2017
- All Public Utilities to Site
- Curb Cuts In/ Access
- Sidewalks
- Traffic has an Easy Flow with a Round-A-Bout



Local Area Hwys & Businesses



Local Area Roadways



I-5 Corridor

- 22 Miles South to Vancouver
- 28 Miles South to PDX
- 85 Miles North to Olympia
- 114 Miles North to Tacoma
- 144 Miles North to Seattle

