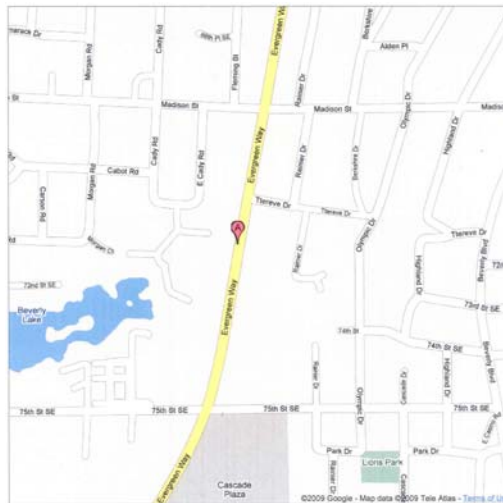


PERFECT FOR THE PROFESSIONAL
7100 Evergreen Way, Suite C
Everett, WA. 98203



Office Space – Suite C – 1951 sq ft
Located South of Downtown Everett
Large Off-Street parking lot

- ✓ **Separate Evergreen Way Signage**
- ✓ **Reception**
- ✓ **2 large offices**
- ✓ **Large open work area**
- ✓ **File/Store room**
- ✓ **Good Freeway Access**
- ✓ **Private entrance**
- ✓ **NNN Lease**
- ✓ **Near Boeing**
- ✓ **\$12.00 SF/YR/NNN**
- ✓ **Map 415/C3**
- ✓ **CBA # 410291**



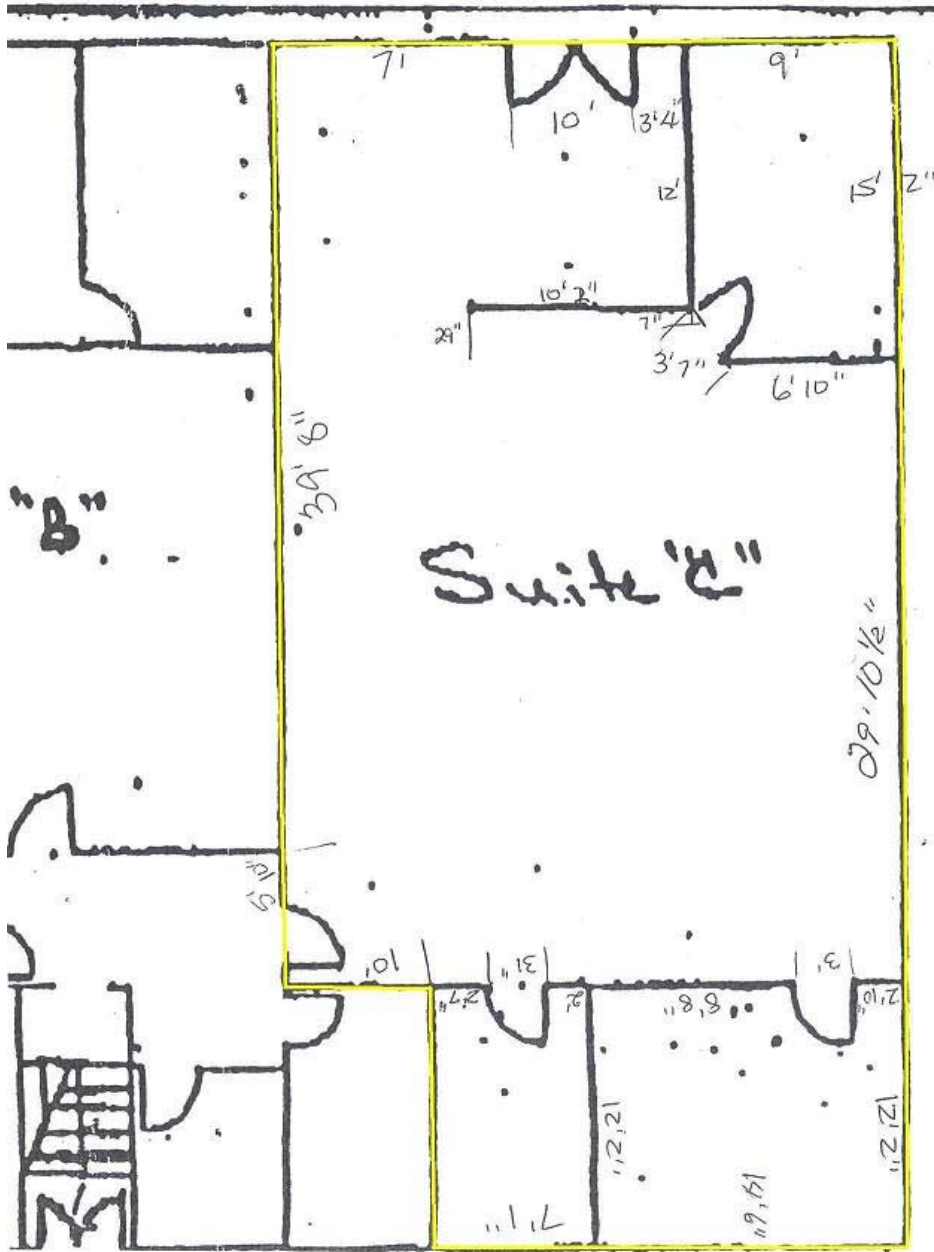
Contact: Ron Thompson (425) 740-2250 or rthompson@wcnw.biz



Windermere Real Estate /Realty Brokerage, Inc.
Commercial NW
7100 Evergreen Way, Suite A, Everett, WA. 98203
Business (425) 355-0707 * Fax (425) 355-9512
E-mail Office@wcnw.biz

F
O
R
L
E
A
S
E

7100 Evergreen Way, Suite C
Everett, WA. 98203



outline of premises

This statement with the information it contains is given with the understanding that all negotiations relating to purchase, renting, or leasing of the property described above shall be conducted through this office. The above information while not guaranteed, has been secured from sources we deem to be reliable.