



Office Space **AVAILABLE**

9201 Camino Media ■ Bakersfield, CA

Property Features

- Located in the highly desirable University Centre Submarket - Limited space available.
- Ground floor space of 2,079 SF available for sublease.
- Second floor space of 2,565 SF available for lease.
- Fully improved space.
- Professionally maintained and managed by M.D. Atkinson Co., Inc.
- Located just west of the Marketplace.
- Neighbors include Chevron, CRC, AERA, Morgan Stanley, UBS, etc.



Martin J. Starr • Principal • 661 616 3567 • mjstarr@asuassociates.com • CA RE #01179469
Matthew E. Starr, SIOR, CCIM • Principal • 661 616 3570 • matthew@asuassociates.com • CA RE #01367855
11601 Bolthouse Drive Suite 110 • Bakersfield, CA 93311 • 661 862 5454 main • 661 862 5444 fax



The information contained herein may have been obtained from sources other than ASU Commercial. We have not verified such information and make no guarantees, warranties or representations about such information. It is your responsibility to independently confirm its accuracy and completeness prior to purchasing/leasing the property.

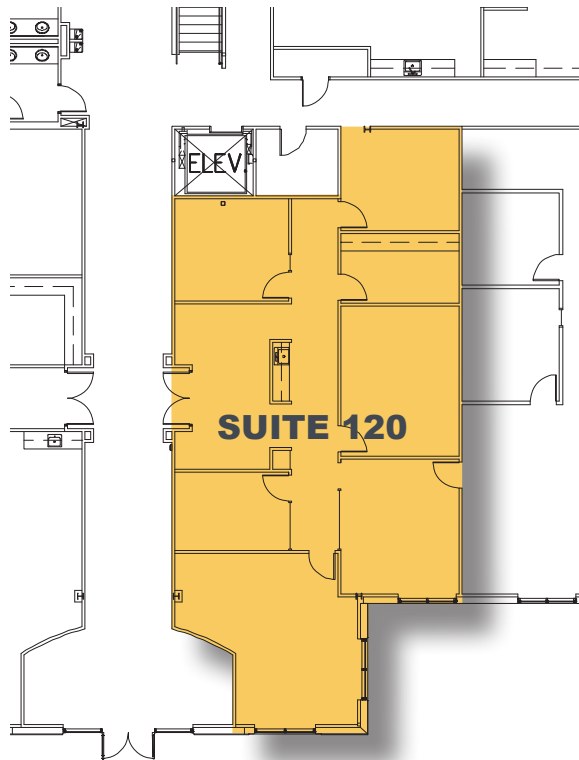
Office Space Available

Two University Centre ▪ 9201 Camino Media ▪ Bakersfield, CA

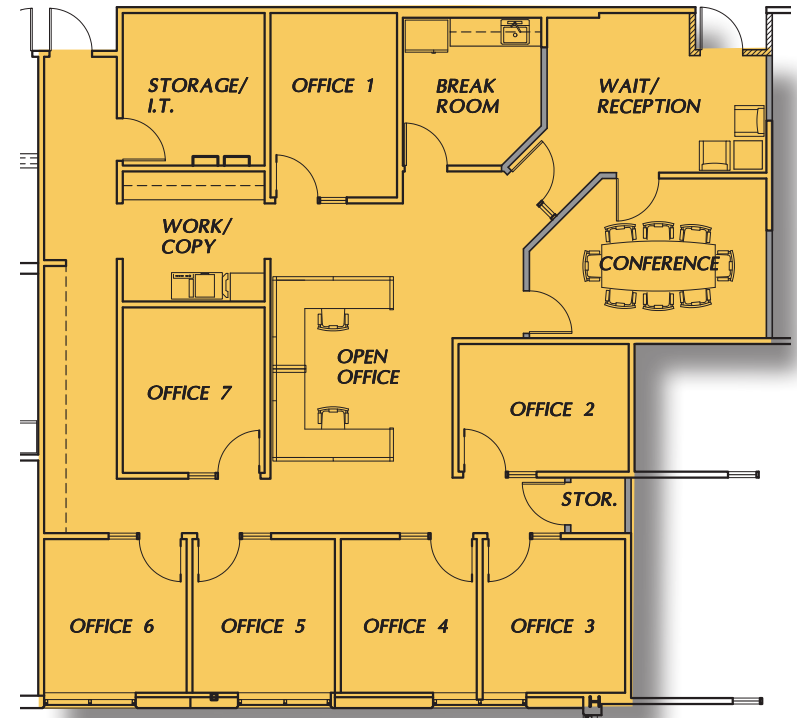
Availability & Floor Plans

Property Details

- **Available Space** Suite 120 - 2,079 RSF - Lease expires February 28, 2022
Suite 235 - 2,565 RSF
- **Rental Rate** \$2.25 per RSF per month modified gross excluding utilities and janitorial service



SUITE 235 Concept Plan



▪ Plans are deemed reliable, but configuration not guaranteed.

Martin J. Starr ▪ Principal ▪ 661 616 3567 ▪ mjstarr@asuassociates.com ▪ CA RE #01179469

Matthew E. Starr, SIOR, CCIM ▪ Principal ▪ 661 616 3570 ▪ matthew@asuassociates.com ▪ CA RE #01367855

11601 Bolthouse Drive Suite 110 ▪ Bakersfield, CA 93311 ▪ 661 862 5454 main ▪ 661 862 5444 fax



Office Space Available

Two University Centre ▪ 9201 Camino Media ▪ Bakersfield, CA

Aerial Photo Facing Southeast



Martin J. Starr ▪ Principal ▪ 661 616 3567 ▪ mjstarr@asuassociates.com ▪ CA RE #01179469

Matthew E. Starr, SIOR, CCIM ▪ Principal ▪ 661 616 3570 ▪ matthew@asuassociates.com ▪ CA RE #01367855

11601 Bolthouse Drive Suite 110 ▪ Bakersfield, CA 93311 ▪ 661 862 5454 main ▪ 661 862 5444 fax



Office Space Available

Two University Centre ■ 9201 Camino Media ■ Bakersfield, CA

Aerial Map



9201 Camino Media



Martin J. Starr ■ Principal ■ 661 616 3567 ■ mjstarr@asuassociates.com ■ CA RE #01179469

Matthew E. Starr, SIOR, CCIM ■ Principal ■ 661 616 3570 ■ matthew@asuassociates.com ■ CA RE #01367855

11601 Bolthouse Drive Suite 110 ■ Bakersfield, CA 93311 ■ 661 862 5454 main ■ 661 862 5444 fax

