

## High-Traffic Arapahoe Retail Lease

3340 - 3370 ARAPAHOE AVE | BOULDER, CO 80303

Size: 640 - 1,000 SF  
Rate: \$23.00 (\$11.74)  
Available Now



# ALL EYES ON YOU

31,000 cars drive by per day. Countless pedestrians walk by. Bikes pedal by. Scooters scoot by. Busses stop by. Someone probably hops by on a pogo stick every now and again. The point is: this place has serious visibility and exposure. Arapahoe is one of Boulder's main drags, and now your business could make a home in the middle of the action. After all, being seen is a big part of being successful.

### PROPERTY HIGHLIGHTS

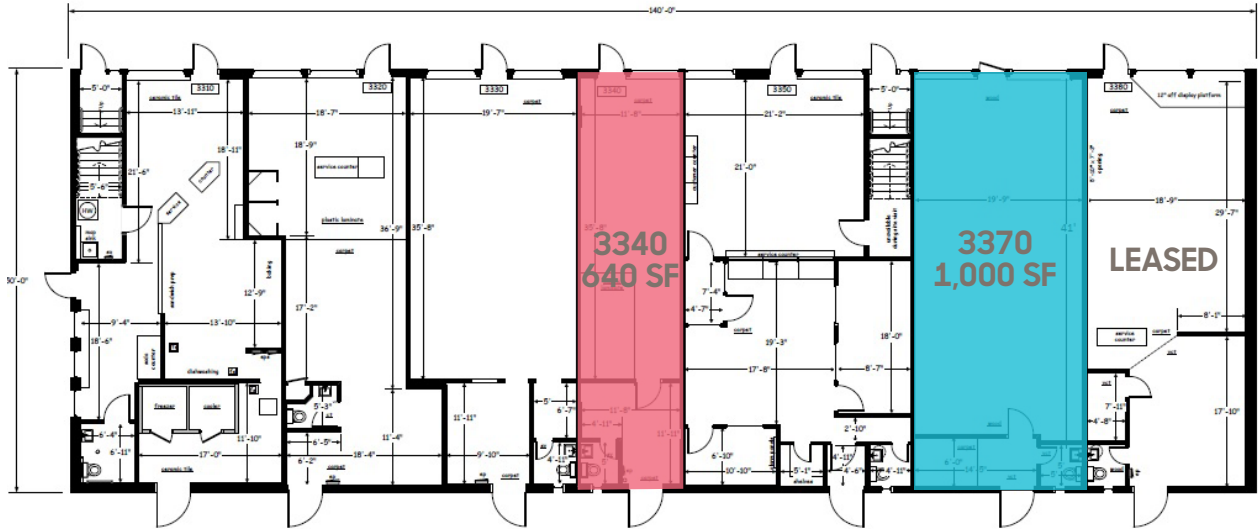
- Affordable lease on busy Arapahoe
- Building and monument signage
- Open layout ready for buildout
- Plenty of parking
- Private restroom



LEARN MORE ABOUT THIS PROPERTY  
[MarketBoulder.com](https://MarketBoulder.com)

DISCLAIMER: The information contained herein has been obtained from sources believed reliable. While we do not doubt its accuracy, we have not verified it and make no guarantee, warranty or representation about it. It is your responsibility to independently confirm its accuracy and completeness.

## ARAPAHOE AVE



LEARN MORE ABOUT THIS PROPERTY  
[MarketBoulder.com](http://MarketBoulder.com)

**TODD WALSH, CCIM**

303 444 4888 Todd@MarketBoulder.com

**LAURA FRENKEL**

303 444 4994 Laura@MarketBoulder.com

