

MULTI-TENANT INDUSTRIAL SPACE AVAILABLE FOR LEASE



KEARNY MESA  
WEST BUSINESS PARK



# KEARNY MESA

---

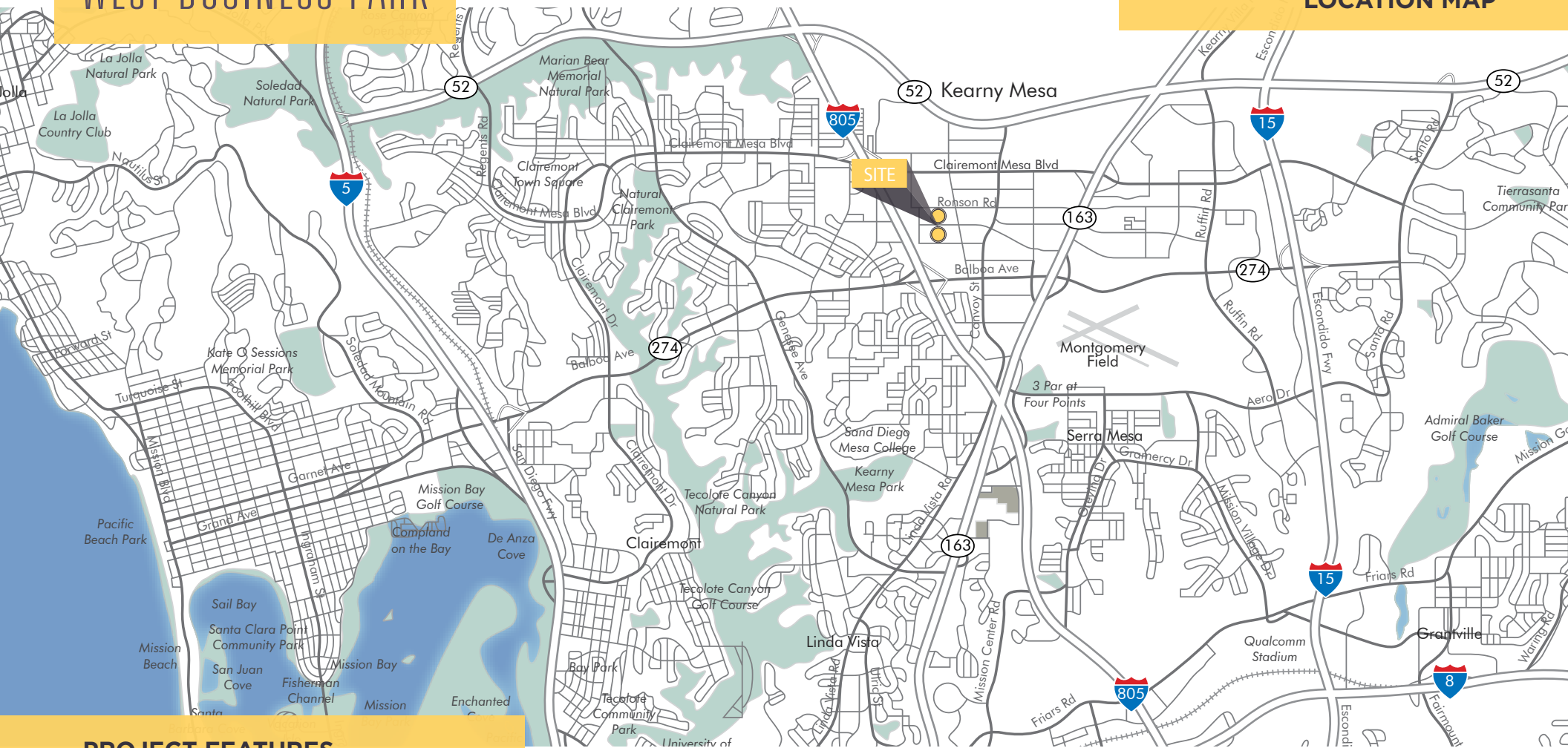
## WEST BUSINESS PARK



# KEARNY MESA WEST BUSINESS PARK



## LOCATION MAP



## PROJECT FEATURES

- Industrial, office and flex suites between 1,460 and 10,050 square feet available
- Part of an approximately 210,673 SF business park
- Approx. 14'-16' clear height
- Grade level loading
- Excellent freeway access just off the I-805 and minutes from I-15 and Highways 52 & 163
- 2.87/1,000 parking ratio

# KEARNY MESA WEST BUSINESS PARK



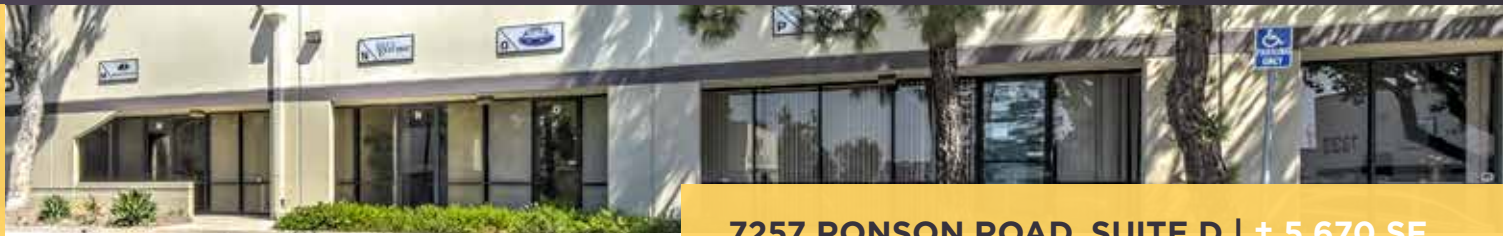
## SITE PLAN + AVAILABILITY



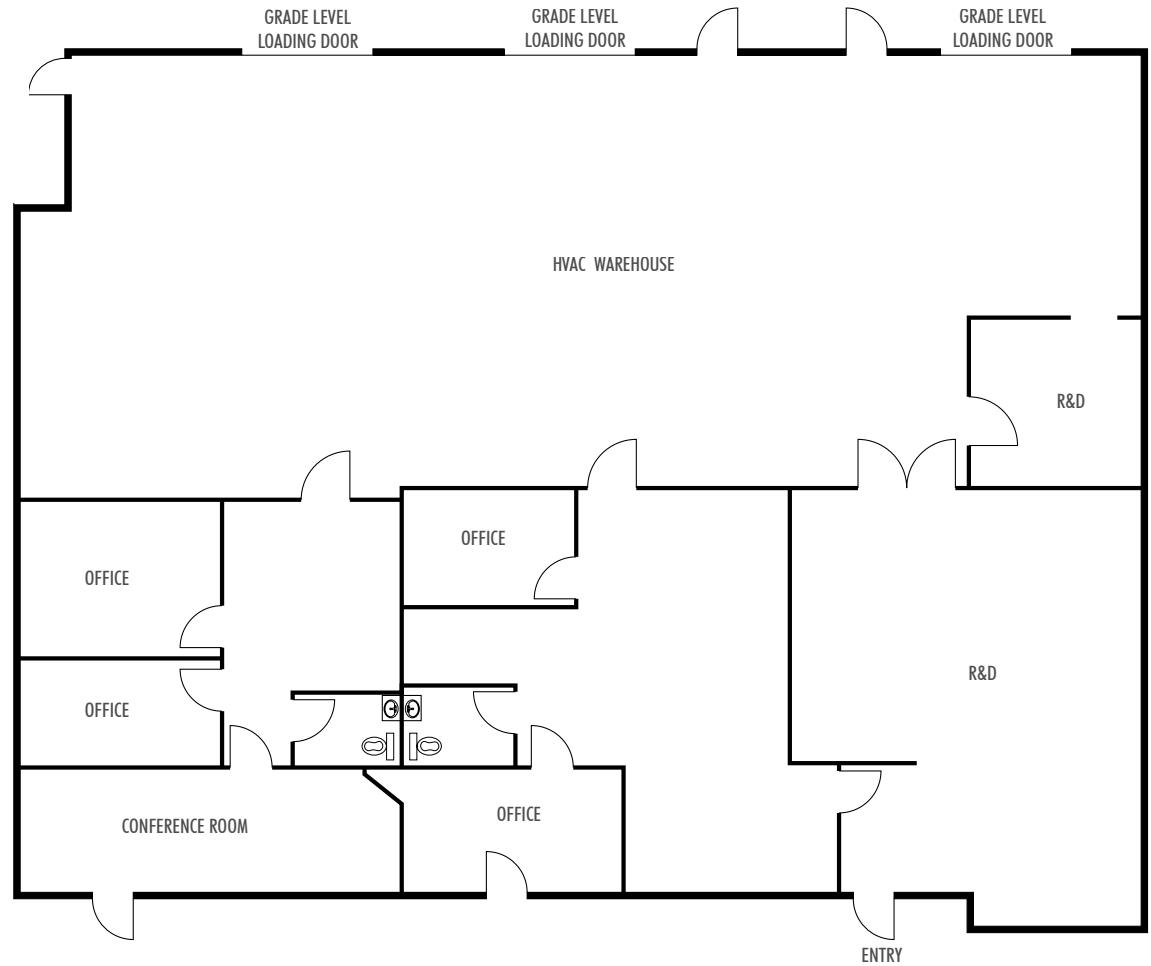
Modified Gross rates do not include a CAM Fee = Approximately \$0.23 PSF/Month

ADDRESS	SF	RATE	COMMENTS
7257 Ronson Road, Suite D	5,670	\$1.55 MG	Approximately 50% office/ 50% warehouse, (4) private offices, conference room, (2) restrooms, (3) grade level loading doors.
7290 Engineer Road, Suite A	1,460	\$1.55 MG	Approximately 60% office/ 40% warehouse, (2) private offices, reception, (1) restroom, and (1) grade level loading door.
7290 Engineer Road, Suite D	1,460	\$1.55 MG	Approximately 85% office/ 15% warehouse, (3) private offices, reception, (1) restroom, and (1) grade level loading door.
7323 Engineer Road, Suite A	10,050	\$1.55 MG	Approximately 50% office/50% HVAC warehouse, (7) private offices, (2) grade level doors, and (2) restrooms. Available March 1, 2019.
7330 Opportunity Road, Suite J	1,581	\$1.55 MG	Approximately 90% office/ 10% warehouse, (4) private offices, reception, open office area, break, conference room, and (1) restroom.
7343 Ronson Road, Suites K-L	1,782	\$1.55 MG	100% office. (3) private offices, open office, and (2) restrooms.
7343 Ronson Road, Suite M	2,398	\$1.55 MG	Approximately 20% office/ 80% warehouse, (2) private offices, reception, (1) restroom and (1) grade level loading door.
7343 Ronson Road, Suite O	2,086	\$1.55 MG	Approximately 50 office/ 50% warehouse, (1) private office, reception, open office area and (1) restroom.
7370 Opportunity Road, Suite J	1,782	\$1.55 MG	Approximately 80 office/ 20% warehouse, (2) private offices, reception, open office area and (1) restroom.

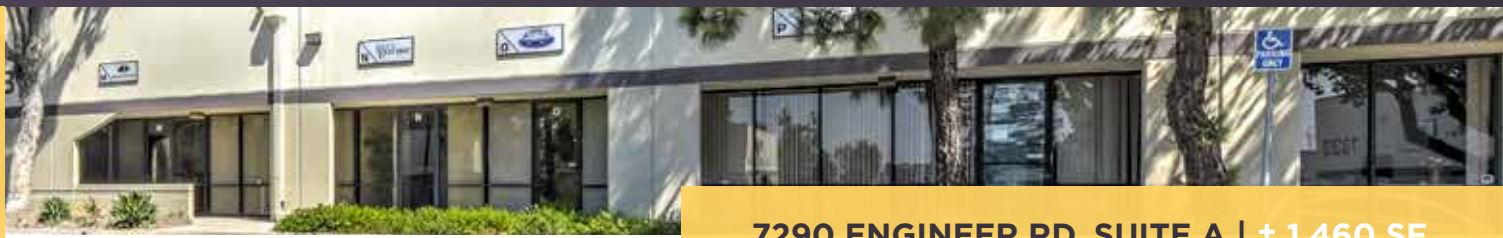
# KEARNY MESA WEST BUSINESS PARK



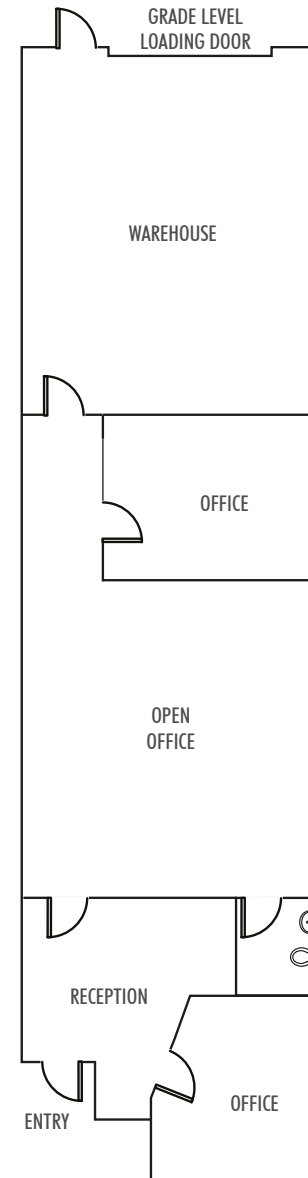
7257 RONSON ROAD, SUITE D | ± 5,670 SF



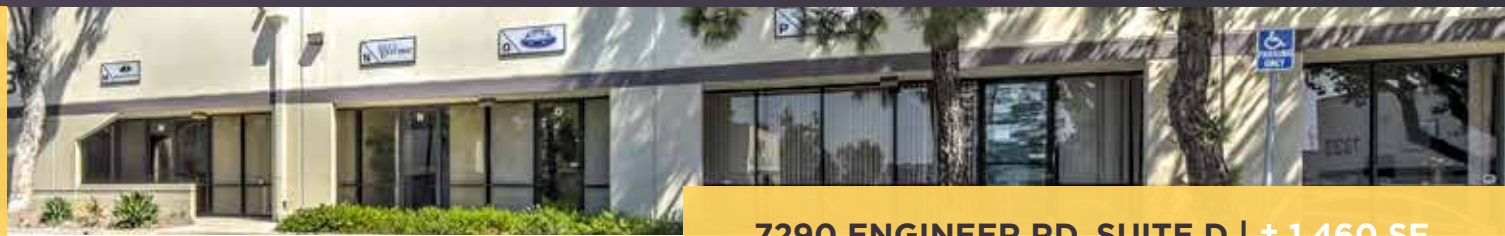
# KEARNY MESA WEST BUSINESS PARK



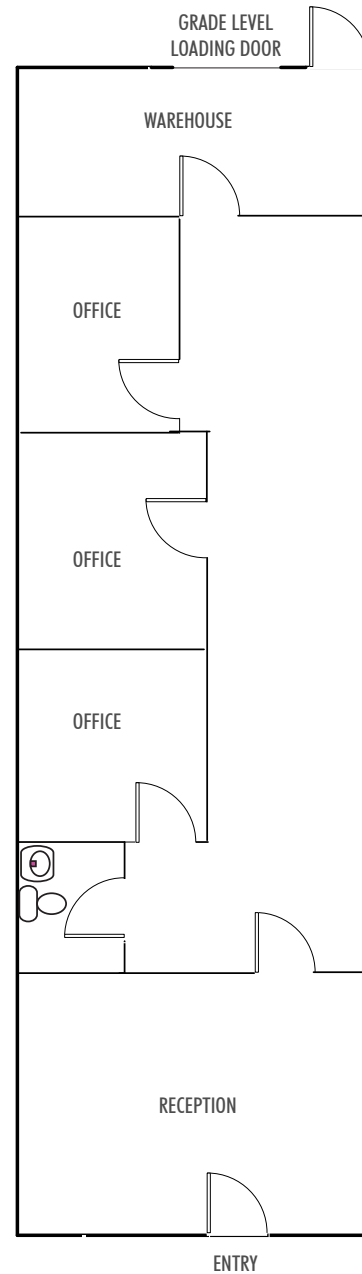
7290 ENGINEER RD, SUITE A | ± 1,460 SF



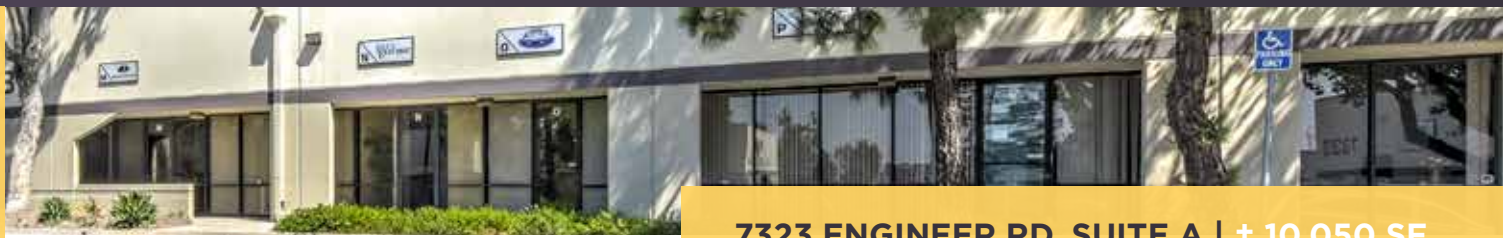
# KEARNY MESA WEST BUSINESS PARK



7290 ENGINEER RD, SUITE D | ± 1,460 SF



# KEARNY MESA WEST BUSINESS PARK

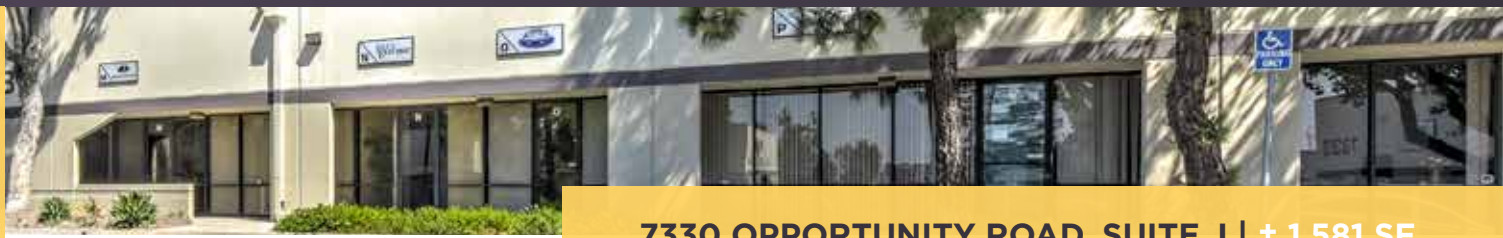


7323 ENGINEER RD, SUITE A | ± 10,050 SF

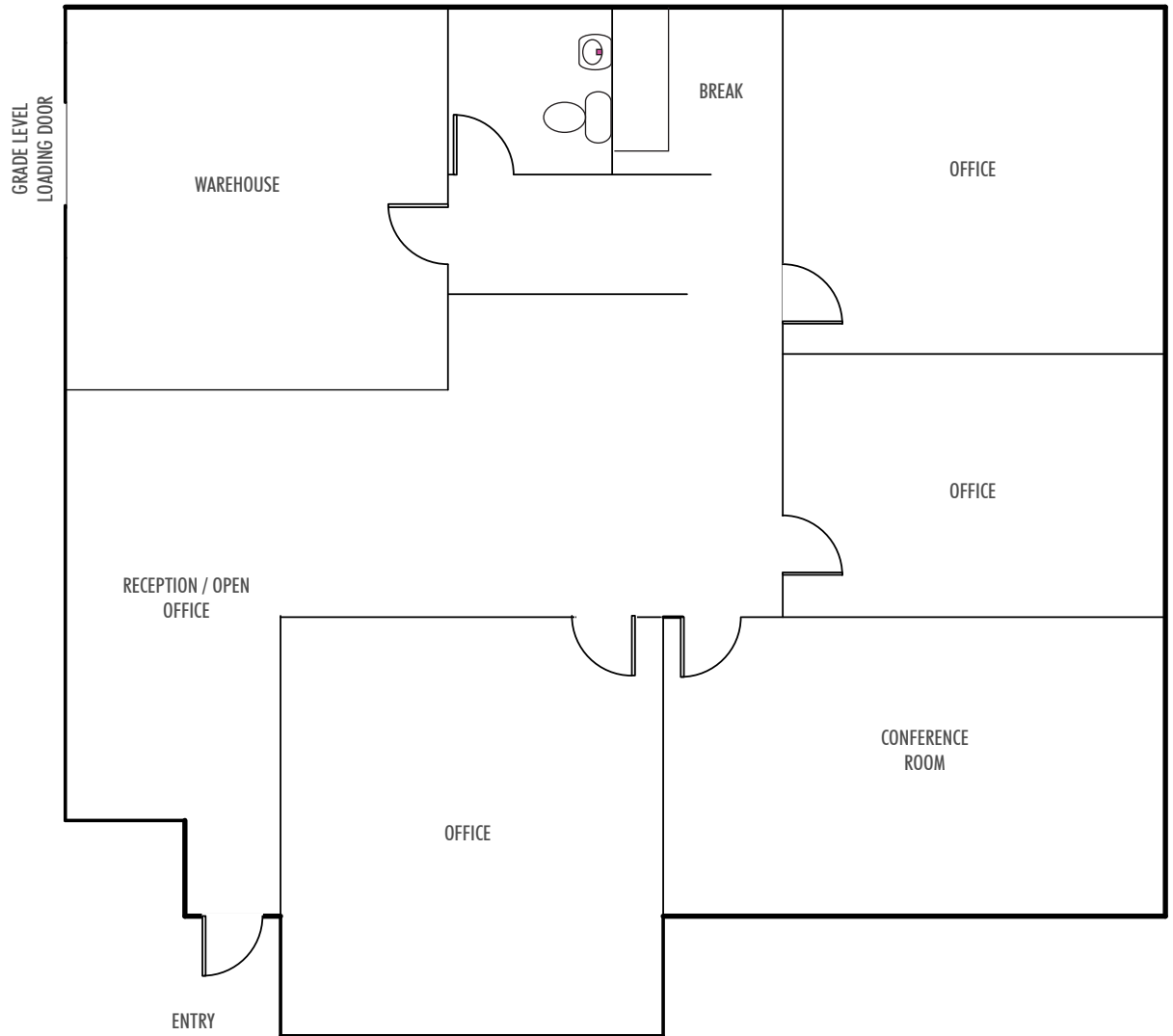




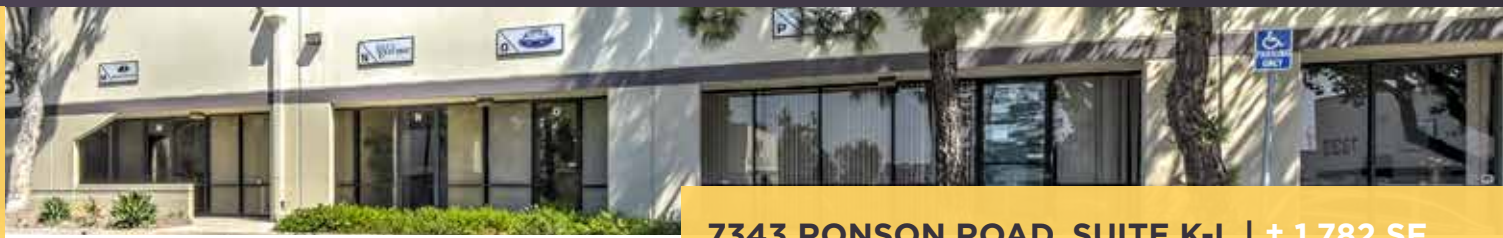
# KEARNY MESA WEST BUSINESS PARK



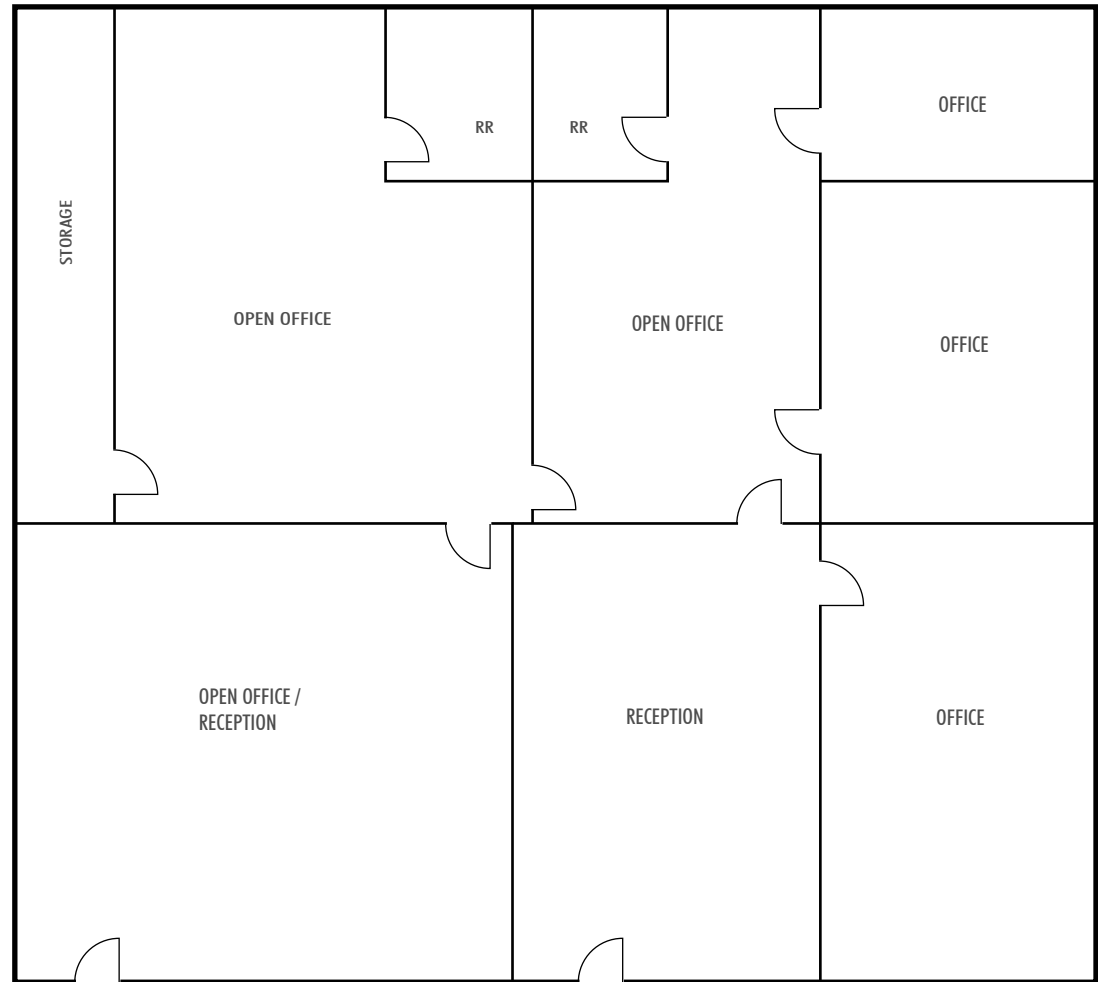
7330 OPPORTUNITY ROAD, SUITE J | ± 1,581 SF



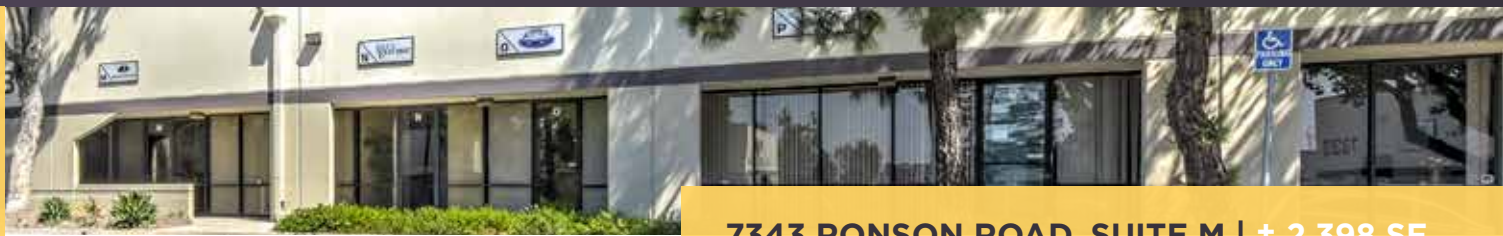
# KEARNY MESA WEST BUSINESS PARK



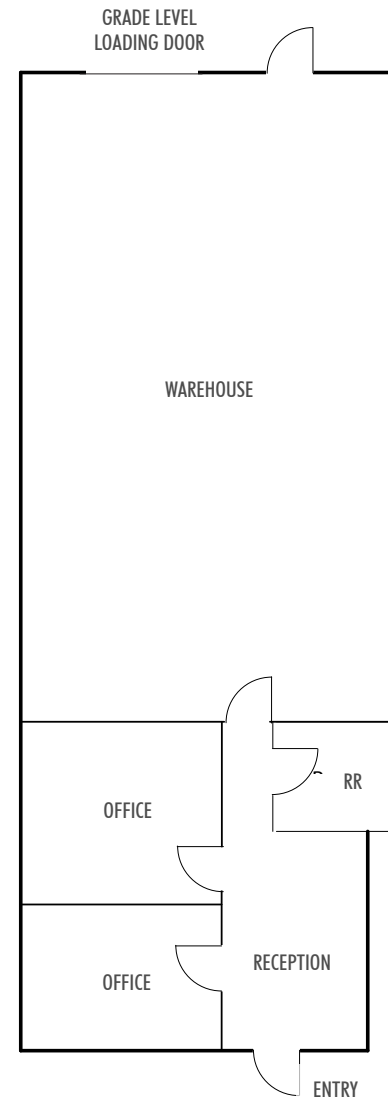
7343 RONSON ROAD, SUITE K-L | ± 1,782 SF



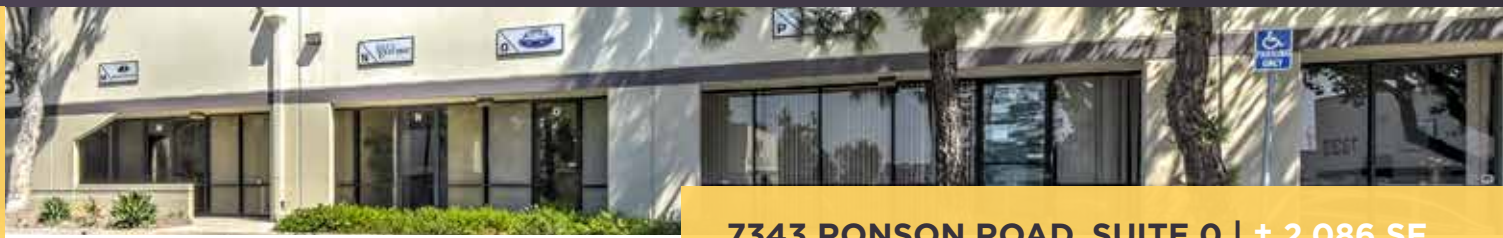
# KEARNY MESA WEST BUSINESS PARK



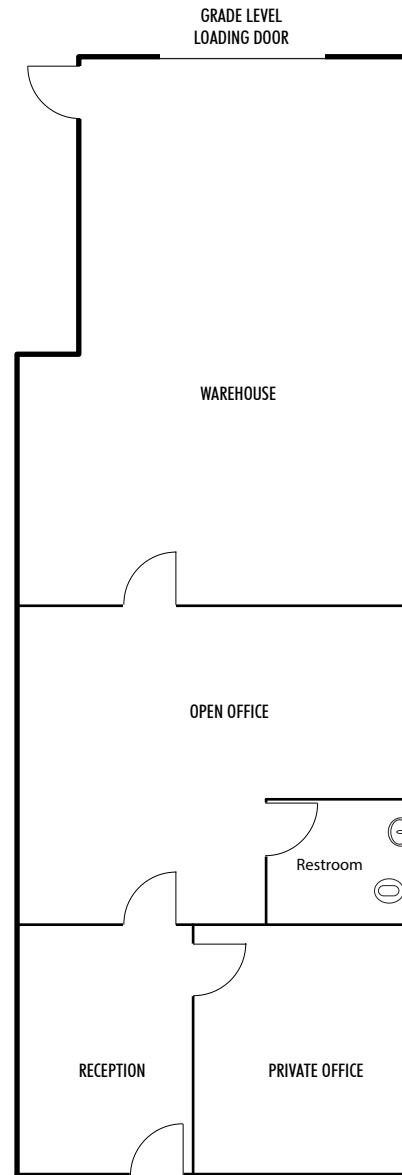
7343 RONSON ROAD, SUITE M | ± 2,398 SF



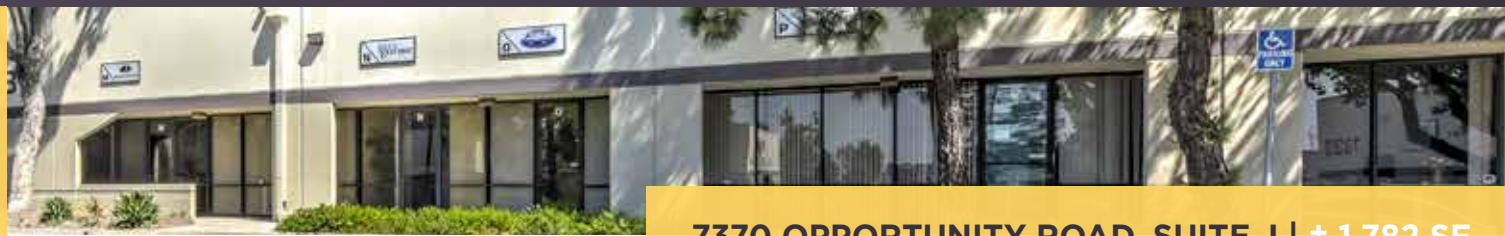
# KEARNY MESA WEST BUSINESS PARK



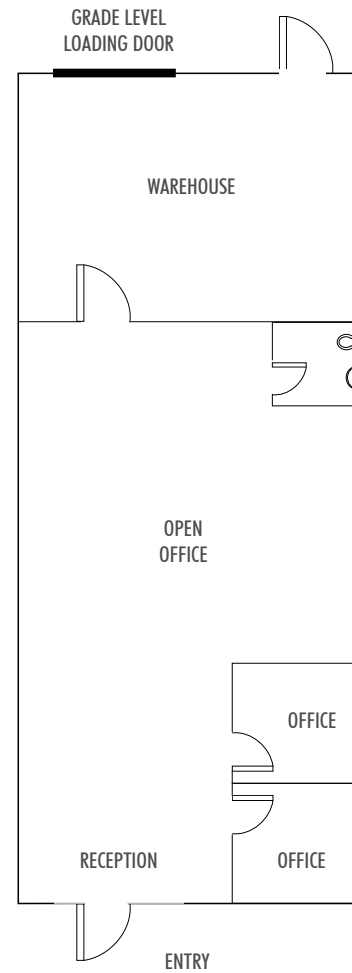
7343 RONSON ROAD, SUITE 0 | ± 2,086 SF



# KEARNY MESA WEST BUSINESS PARK



7370 OPPORTUNITY ROAD, SUITE J | ± 1,782 SF



# KEARNY MESA WEST BUSINESS PARK

FOR MORE INFORMATION, PLEASE CONTACT:

**RYAN SPARKS**  
Lic. 00917639  
+1 858 546 2606  
ryan.sparks@cbre.com

**SEAN WILLIAMS**  
Lic. 1475415  
+1 858 546 4625  
sean.williams@cbre.com

**PETE CARROCCIO**  
Lic. 02022898  
+1 858 546 4679  
pete.carroccio@cbre.com



© 2019 CBRE, Inc. This information has been obtained from sources believed reliable. We have not verified it and make no guarantee, warranty or representation about it. Any projections, opinions, assumptions or estimates used are for example only and do not represent the current or future performance of the property. You and your advisors should conduct a careful, independent investigation of the property to determine to your satisfaction the suitability of the property for your needs. Photos herein are the property of their respective owners and use of these images without the express written consent of the owner is prohibited.