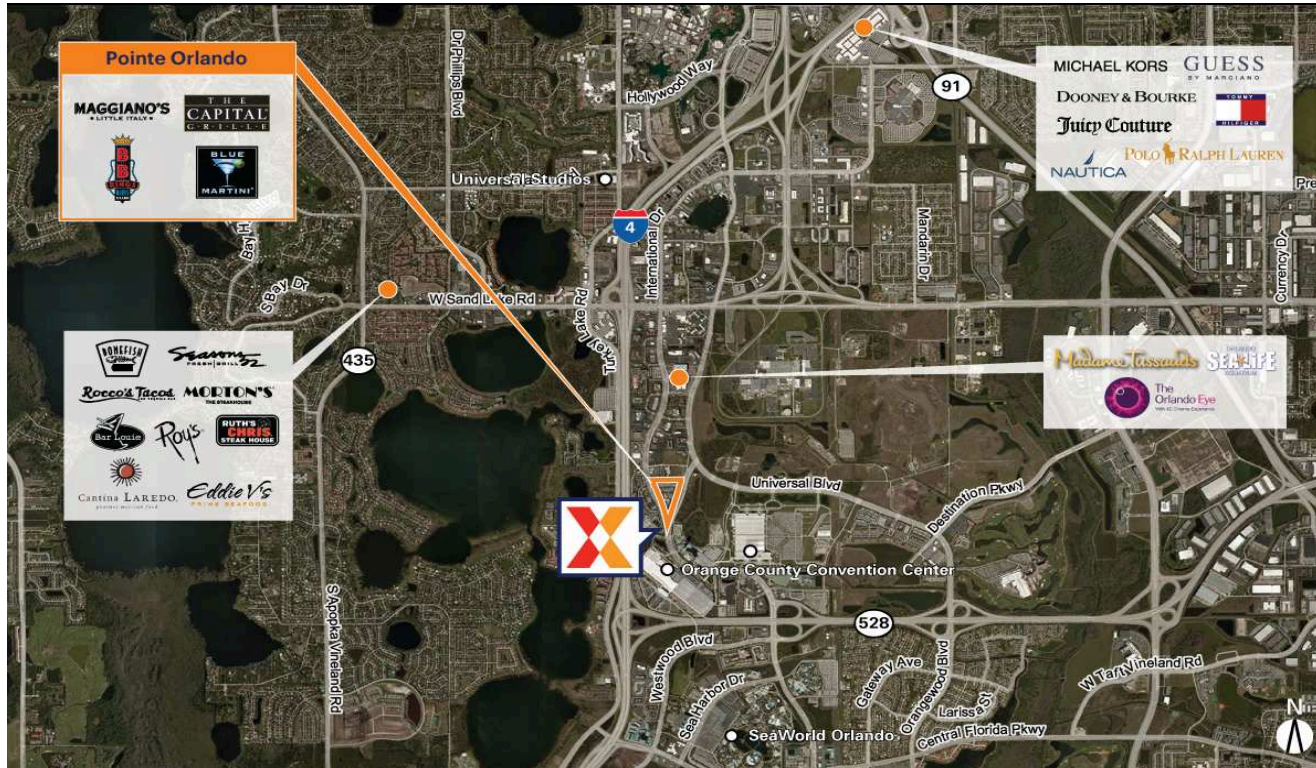


# Pointe Orlando

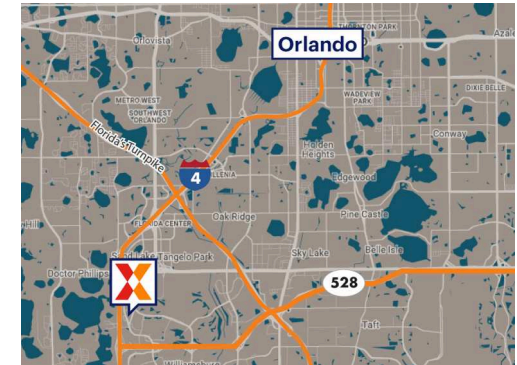
Orlando-Kissimmee-Sanford, FL

28.4324, -81.471

9101 International Drive | Orlando, FL 32819



Center Size: 428,664 SF



Demographics	1 Mile	3 Mile	5 Mile
	1,953	43,551	157,829
	684	17,459	58,019
	\$155,887	\$106,099	\$83,258

<http://www.pointeorlando.com/>

Rent restaurant space and retail locations in highly visible shopping center with 34,000+ vehicles daily on Orlando's primary tourism corridor, International Drive

Surrounded by 46,000+ hotel rooms and adjacent to the second largest convention center in the country drawing 1.5M delegates annually

High-volume dining and entertainment venues including The Capital Grille, B.B. King's Blues Club, Maggiano's Little Italy and Blue Martini

Specialty retail space and pop-up shop locations available

# Pointe Orlando

Orlando-Kissimmee-Sanford, FL

28.4324, -81.471

9101 International Drive | Orlando, FL 32819

## Available Space

B	2,921 SF
101/102	6,500 SF
102	5,589 SF
104A	2,259 SF
112	5,562 SF
206	2,158 SF
208	5,476 SF
211	1,053 SF
212	1,923 SF
214	1,486 SF
218	2,000 SF
227	790 SF
228	568 SF
229	2,469 SF
232	837 SF
236A	2,110 SF
246	3,507 SF
248	1,608 SF
250	1,086 SF
300A	2,484 SF
302A	1,831 SF
326	6,395 SF
502	4,888 SF
606	4,471 SF
720	13,199 SF

## Current Retailers

A3	Capital Grille	9,020 SF	302	Hollister Co.	6,464 SF
E3A	Brother Jimmy's BBQ	3,776 SF	328/330	Cuba Libre Restaurant & Rum Bar	18,188 SF
PAD1	WonderWorks	24,506 SF			
106	Redi Pedi	3,006 SF	332R	The Pub	7,975 SF
108	Tommy Hilfiger	5,265 SF	334R	The Oceanaire	8,500 SF
111	BB Kings	4,790 SF		Seafood Room	
200	Moondance Trading	4,486 SF	500R	Maggiano's Little Italy	16,400 SF
202	Bowes Signature Candles	3,081 SF	504	Tharoo & Company Jewelry Boutique	2,084 SF
203	DBU Fashion	1,836 SF			
204	One For The Road	1,527 SF	602	The Hampton Social	10,763 SF
209	The Oceanaire Seafood Room	1,541 SF	604	Marlow's Tavern	3,561 SF
			608	Rodzio Grill	7,030 SF
210	Ben & Jerry's	862 SF	710	Improv & Fatfish Blue	14,369 SF
220	Brixmor Property Group	6,292 SF	730	Itta Bena Restaurant	4,932 SF
			740	B.B. King's Blues Club	10,930 SF
224	FLOW	1,360 SF			
226	Digital Center	1,203 SF			
1171	230/230A	2,660 SF	741A	Lafayettes	7,737 SF
			742	Taverna Opa	5,500 SF
231	Cigars To Go	989 SF	1012	Main Event Entertainment	48,341 SF
236	Blue Martini	7,205 SF			
300C	Monkey Joe's	17,250 SF			



# Pointe Orlando

Orlando-Kissimmee-Sanford, FL

28.4324, -81.471

9101 International Drive | Orlando, FL 32819



## Available Space

A3	0 SF
E3A	0 SF
101/102	0 SF
104a	0 SF
106	0 SF
108	0 SF
111	0 SF
112	0 SF
200	0 SF
203	0 SF
204	0 SF
206	0 SF
208	0 SF
209	0 SF
210	0 SF
211	0 SF
212	0 SF
214	0 SF
218	0 SF
224	0 SF
226	0 SF
227	0 SF
228	0 SF
229	0 SF
230/230A	0 SF
231	0 SF
232	0 SF
236	0 SF
236A	0 SF
246	0 SF
248	0 SF
250	0 SF
300A	0 SF
300C	0 SF
302	0 SF
302A	0 SF
326	0 SF
328/330	0 SF
332R	0 SF
334R	0 SF
500R	0 SF
502	0 SF
504	0 SF
602	0 SF
604	0 SF
606	0 SF
608	0 SF
730	0 SF
741A	0 SF
1012	0 SF

1171

## Current Retailers

E3/730	Itta Bena Restaurant	4,687 SF	740	B.B. King's Blues Club	10,930 SF
E3A	Brother Jimmy's BBQ	3,776 SF	741	Lafayette's Music Room	8,204 SF
312	Regal Cinemas	67,726 SF	742	Taverna Opa	5,500 SF
710	Improv & Fatfish Blue	14,369 SF			
700	Head K... ..	10,100 SF			