



DRIVE THRU RESTAURANT FOR SALE

811 NW Woods Chapel Road, Blue Springs, MO



SALE PRICE: \$749,000 | 2,500 SF BUILDING

DEMOGRAPHICS

	1 mile	3 miles	5 miles
Estimated Population	10,408	48,112	104,360
Avg. Household Income	\$79,569	\$80,939	\$88,657

- 2,500 SF building on 0.95 acre lot
- Great visibility
- Established business
- Adjacent to Sonic and Kindercare
- Nearby tenants include CVS, Dollar Tree, Pizza Hut, Taco Bell, Subway, Quik Trip, and McDonald's



CLICK HERE TO VIEW MORE LISTING INFORMATION

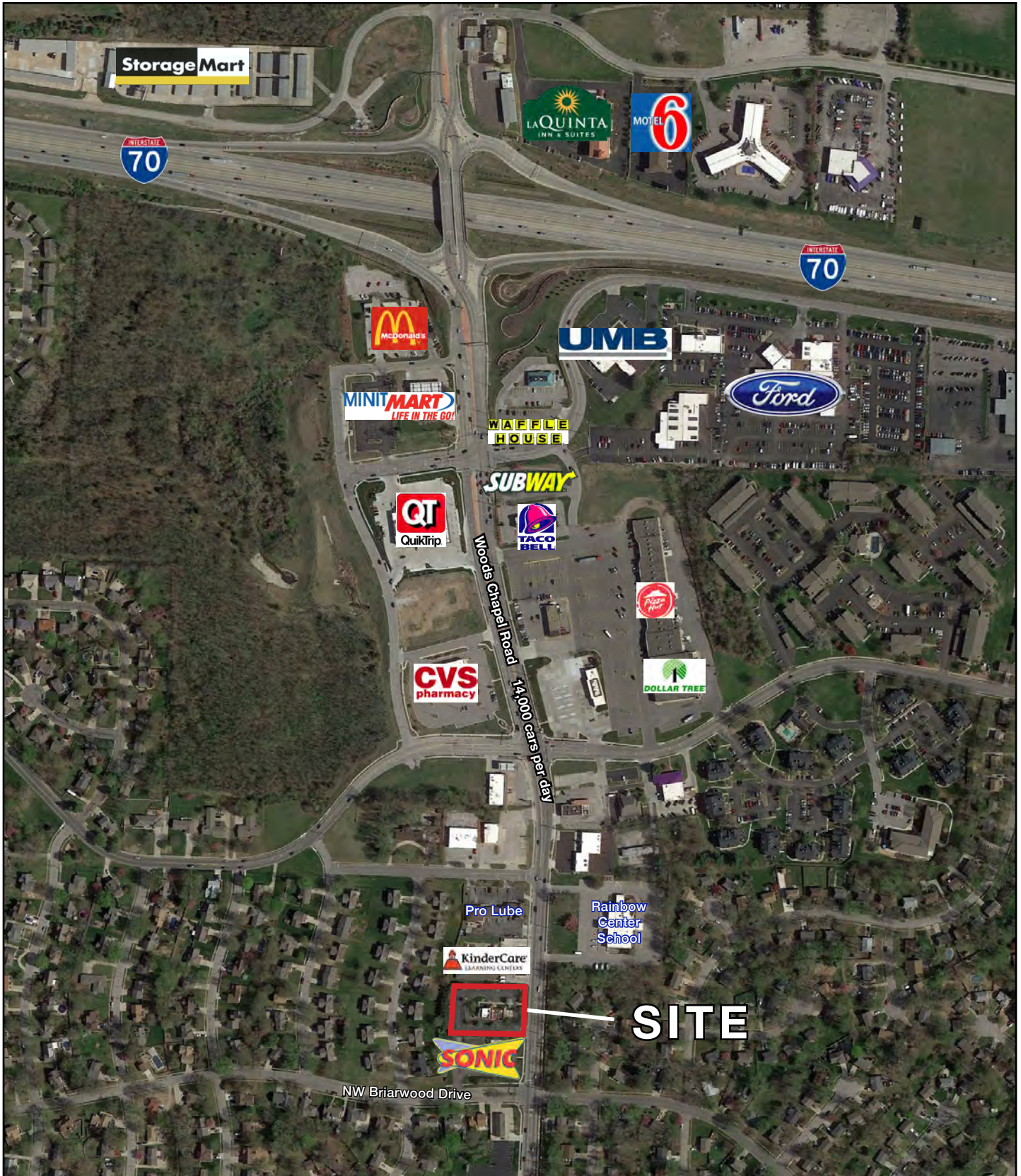
For More Information Contact:

WILLIAM GLASGOW | 816.412.7394 | wglasgow@blockandco.com

Exclusive Agent

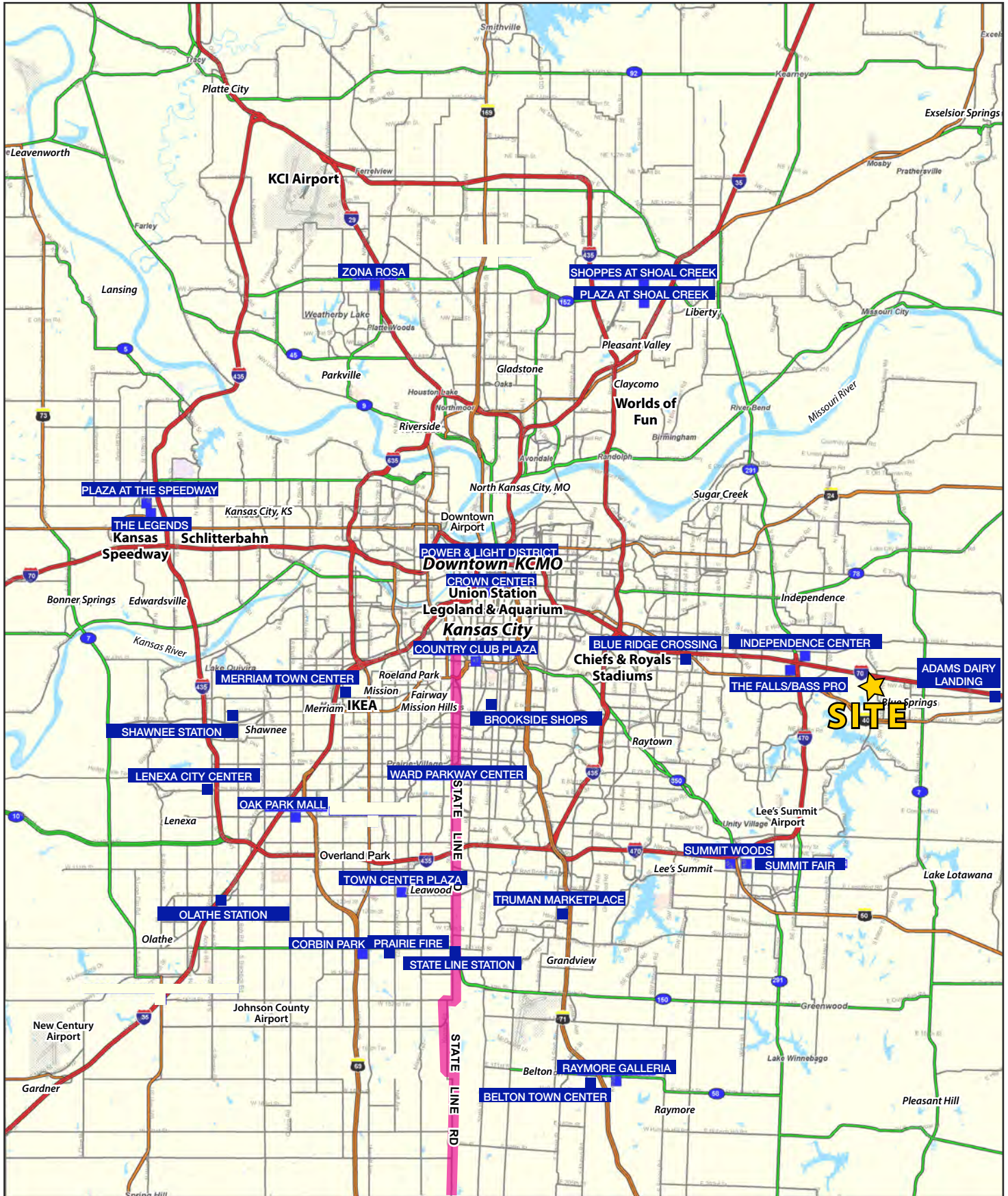


AERIAL



DRIVE THRU RESTAURANT FOR SALE

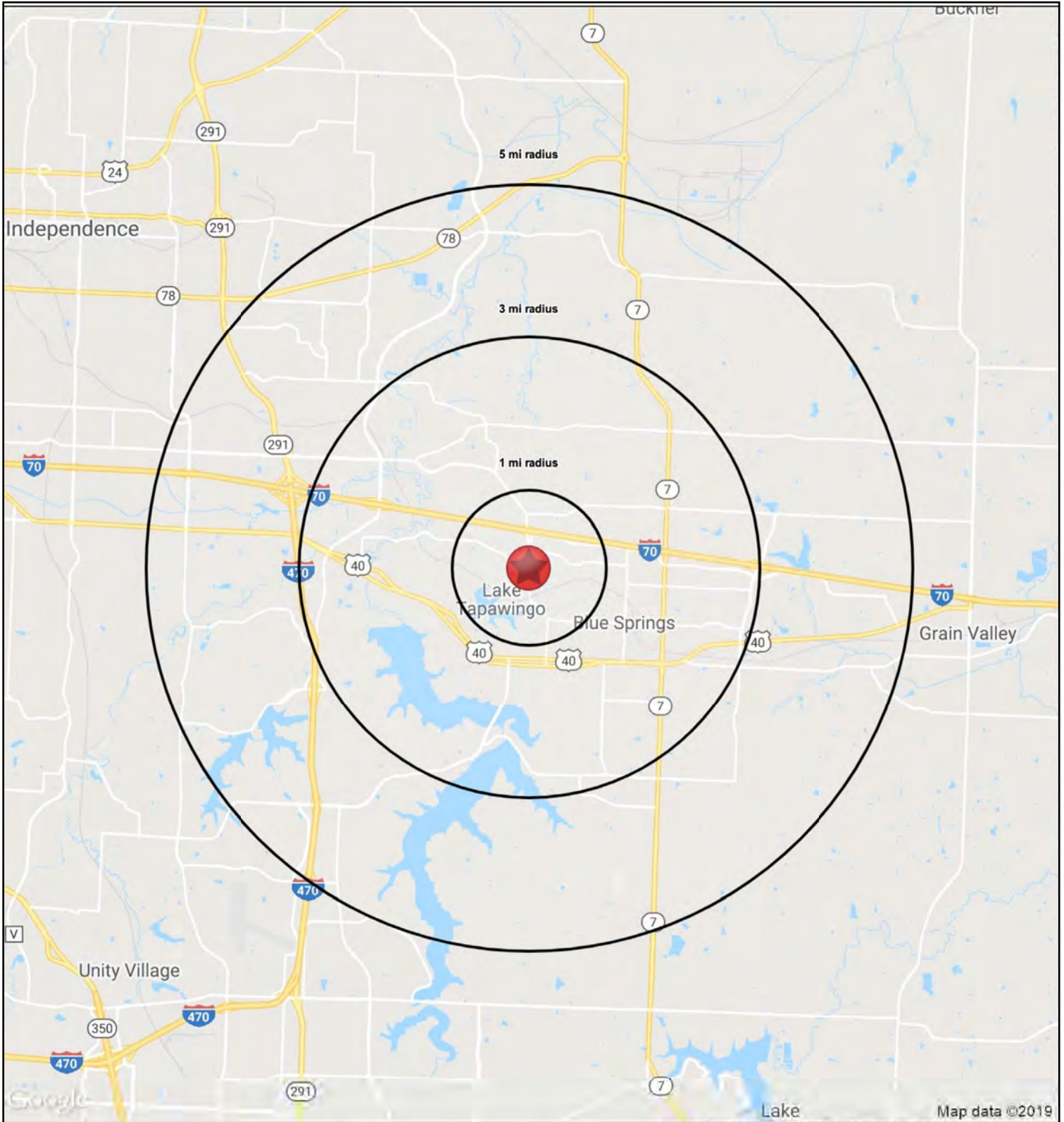
811 NW Woods Chapel Road, Blue Springs, MO





DRIVE THRU RESTAURANT FOR SALE

811 NW Woods Chapel Road, Blue Springs, MO





DRIVE THRU RESTAURANT FOR SALE

811 NW Woods Chapel Road, Blue Springs, MO

HS1

811 NW Woods Chapel Road		1 mi radius	3 mi radius	5 mi radius
Blue Springs, MO 64015				
POPULATION	2019 Estimated Population	10,408	48,112	104,360
	2024 Projected Population	10,691	49,364	107,166
	2010 Census Population	10,096	46,805	99,908
	2000 Census Population	9,198	43,822	84,545
	Projected Annual Growth 2019 to 2024	0.5%	0.5%	0.5%
	Historical Annual Growth 2000 to 2019	0.7%	0.5%	1.2%
	2019 Median Age	35.1	37.0	38.4
HOUSEHOLDS	2019 Estimated Households	4,151	19,400	42,502
	2024 Projected Households	4,225	19,705	43,195
	2010 Census Households	3,822	17,856	38,618
	2000 Census Households	3,392	16,134	31,462
	Projected Annual Growth 2019 to 2024	0.4%	0.3%	0.3%
	Historical Annual Growth 2000 to 2019	1.2%	1.1%	1.8%
RACE AND ETHNICITY	2019 Estimated White	84.8%	86.0%	86.3%
	2019 Estimated Black or African American	7.9%	6.6%	6.5%
	2019 Estimated Asian or Pacific Islander	1.7%	2.0%	2.1%
	2019 Estimated American Indian or Native Alaskan	0.5%	0.5%	0.4%
	2019 Estimated Other Races	5.1%	4.9%	4.6%
	2019 Estimated Hispanic	6.4%	5.6%	5.4%
INCOME	2019 Estimated Average Household Income	\$79,569	\$80,939	\$88,657
	2019 Estimated Median Household Income	\$67,607	\$73,692	\$77,648
	2019 Estimated Per Capita Income	\$31,744	\$32,662	\$36,144
EDUCATION (AGE 25+)	2019 Estimated Elementary (Grade Level 0 to 8)	0.7%	1.0%	1.1%
	2019 Estimated Some High School (Grade Level 9 to 11)	5.1%	4.5%	3.8%
	2019 Estimated High School Graduate	24.4%	26.2%	26.4%
	2019 Estimated Some College	26.5%	24.7%	23.9%
	2019 Estimated Associates Degree Only	9.5%	8.6%	8.3%
	2019 Estimated Bachelors Degree Only	21.8%	22.7%	23.4%
	2019 Estimated Graduate Degree	11.9%	12.3%	13.2%
BUSINESS	2019 Estimated Total Businesses	286	2,163	3,773
	2019 Estimated Total Employees	3,145	24,918	44,719
	2019 Estimated Employee Population per Business	11.0	11.5	11.9
	2019 Estimated Residential Population per Business	36.3	22.2	27.7

