



1035-1045 E Green St.

Pasadena, California 91101

Property Highlights

- Historical office building once occupied by Albert Einstein (Suite 201)
- Great Green Street Location
- Minutes from 210, 134 & 110 Freeways
- Local Destinations: Pasadena Convention Center, South Lake District, Playhouse District, Pasadena City College, CalTech
- Parking \$80 per space, per month



Space	Lease Rate	Size (SF)
1037 E. Green Street, Ground Floor & Basement	\$1.25 SF/MONTH	4,268 SF
1039 E. Green Street, Ground Floor	\$2.50 SF/MONTH	1,455 SF
1041 E. Green Street, Suite 206	\$1.85 SF/MONTH	352 SF

For more information:

John Martin

626 204 1503 • jmartin@naicapital.com • CA CalDRE #01280892

Sheri McCanless

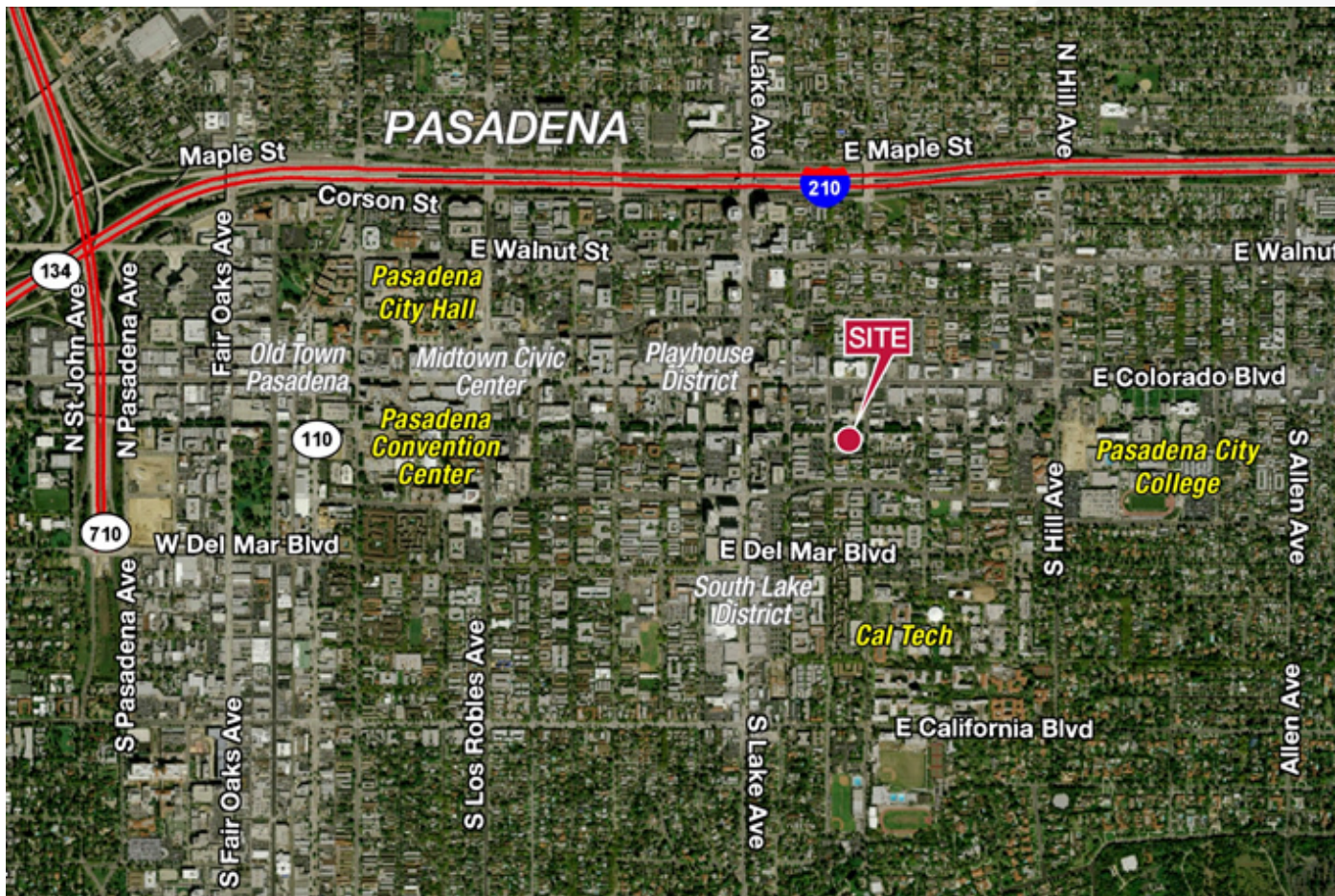
626 204 1508 • smccanless@naicapital.com • CA CalDRE #01306519

NO WARRANTY, EXPRESS OR IMPLIED, IS MADE AS TO THE ACCURACY OF THE INFORMATION CONTAINED HEREIN. THIS INFORMATION IS SUBMITTED SUBJECT TO ERRORS, OMISSIONS, CHANGE OF PRICE, RENTAL OR OTHER CONDITIONS, WITHDRAWAL WITHOUT NOTICE, AND IS SUBJECT TO ANY SPECIAL LISTING CONDITIONS IMPOSED BY OUR PRINCIPALS, COOPERATING BROKERS, BUYERS, TENANTS AND OTHER PARTIES WHO RECEIVE THIS DOCUMENT SHOULD NOT RELY ON IT, BUT SHOULD USE IT AS A STARTING POINT OF ANALYSIS, AND SHOULD INDEPENDENTLY CONFIRM THE ACCURACY OF THE INFORMATION CONTAINED HEREIN THROUGH A DUE DILIGENCE REVIEW OF THE BOOKS, RECORDS, FILES AND DOCUMENTS THAT CONSTITUTE RELIABLE SOURCES OF THE INFORMATION DESCRIBED HEREIN. LOGOS ARE FOR IDENTIFICATION PURPOSES ONLY AND MAY BE TRADEMARKS OF THEIR RESPECTIVE COMPANIES. NAI CAPITAL, INC. CAL DRE LIC. #01990696.

NAI Capital
225 S. Lake Avenue, Suite 1170
Pasadena, CA 91101
626 564 4800
www.naicapital.com

For Lease

The Einstein Building

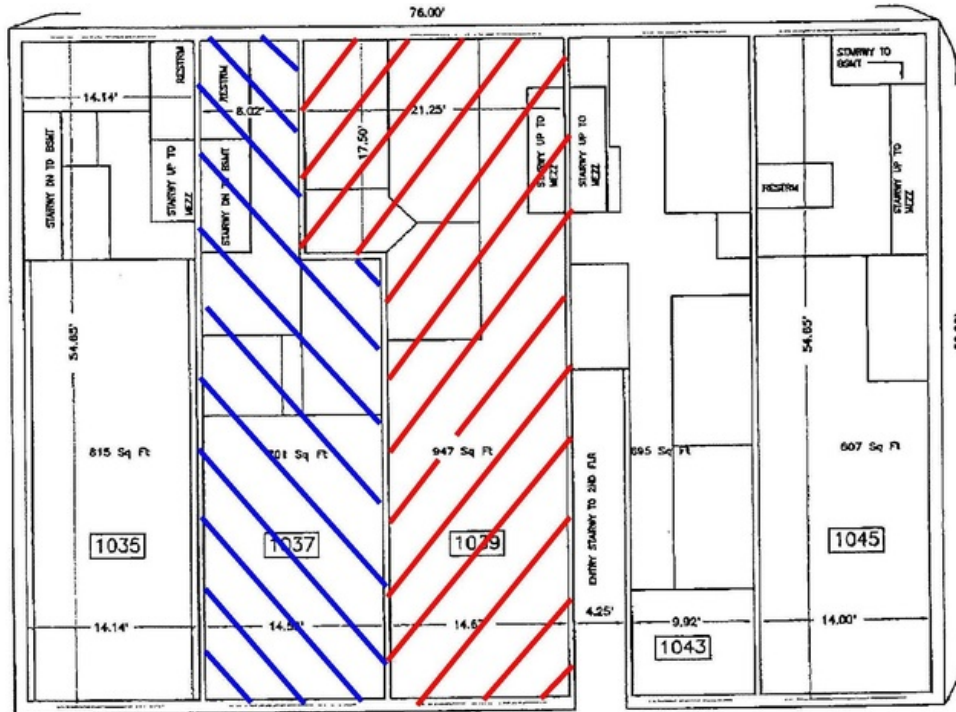
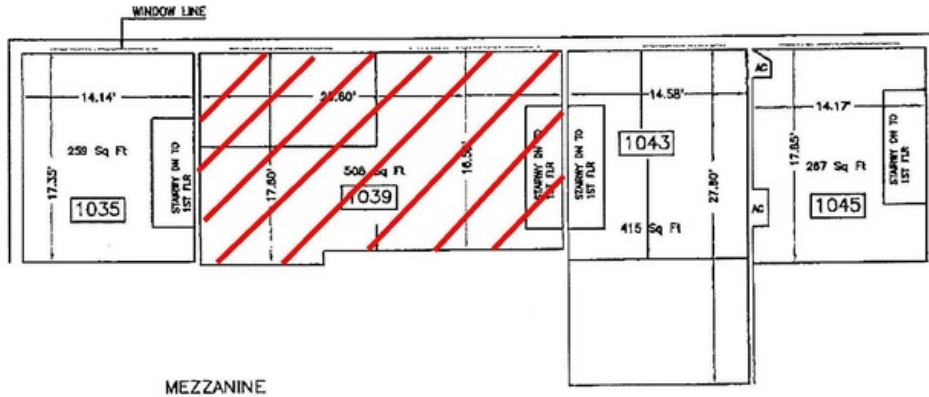


John Martin
626.204.1503
jmartin@naicapital.com
CalDRE #01280892

Sheri McCanless
626.204.1508
smccanless@naicapital.com
CalDRE #01306519



For Lease

The Einstein Building



1" = 4'

GREEN ST

-  37 E Green
-  39 E Green

MEASUREMENTS SHOWN ARE TO INSIDE F.O.W. OR TO WINDOW LINE AS SHOWN.

INTERIOR WALLS ARE 0.45' THICK.
EXTERIOR WALLS ARE 1.08' THICK.

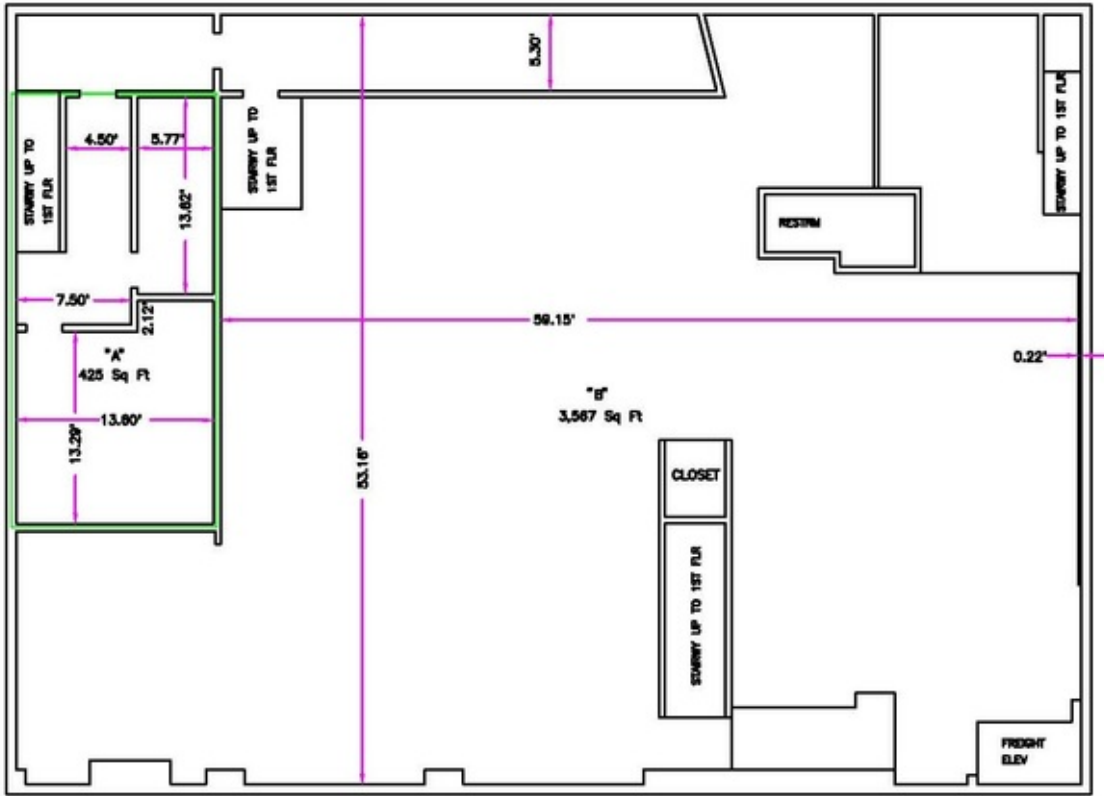
AREAS ARE DETERMINED USING CENTER OF INTERIOR WALLS, AND WINDOW LINE IN EXTERIOR WALLS.

John Martin
626.204.1503
jmartin@naicapital.com
CalDRE #01280892

Sheri McCanless
626.204.1508
smccanless@naicapital.com
CalDRE #01306519

For Lease

The Einstein Building



GREEN ST



AREA
"A"
LIMITS

= 425 SQ FT

AREA "B" = 3567 SQ FT

TOTAL BSMT AREA = 3992 SQ FT

1" = 4'

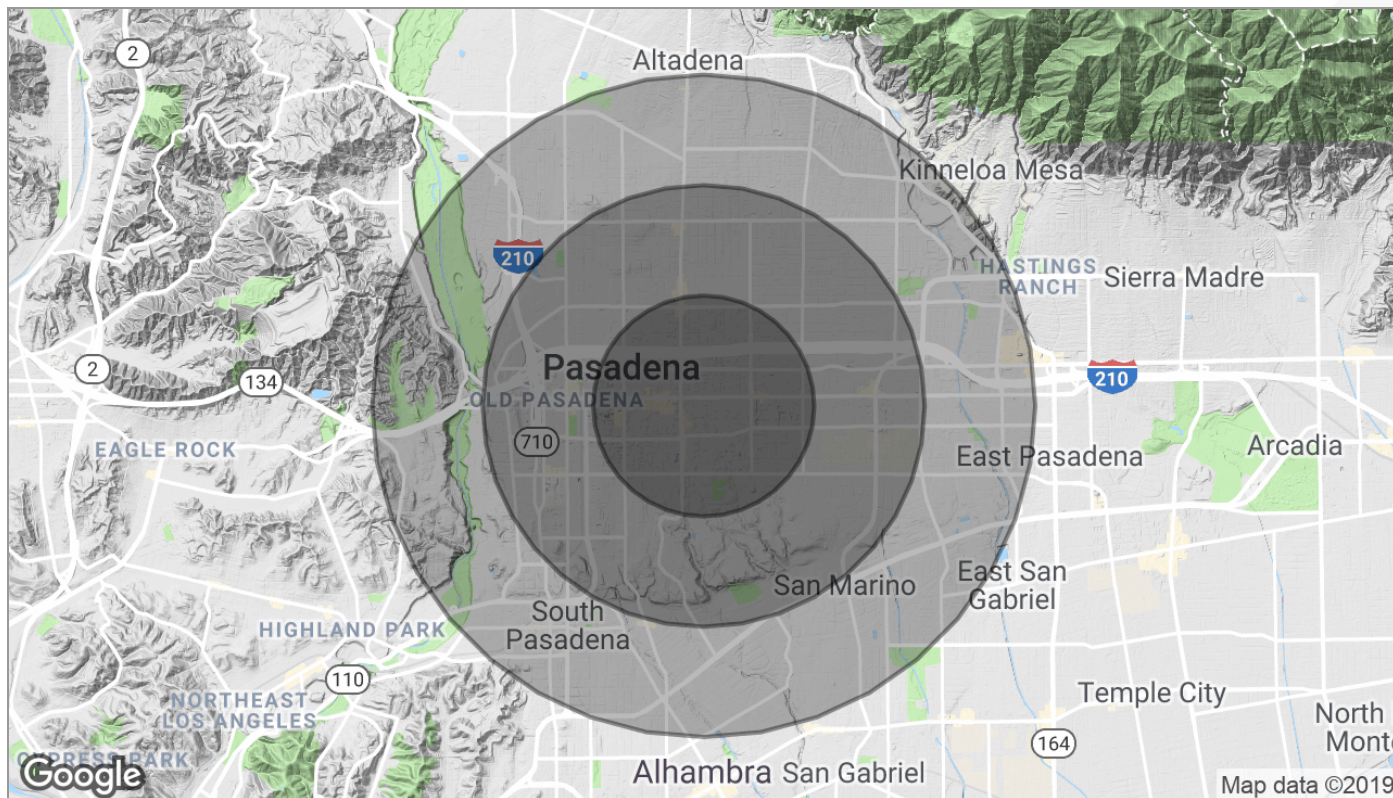
MEASUREMENTS SHOWN ARE TO INSIDE F.O.W.
BASEMENT AREAS DETERMINED TO CENTER OF WALLS.

John Martin
626.204.1503
jmartin@naicapital.com
CalDRE #01280892

Sheri McCanless
626.204.1508
smccanless@naicapital.com
CalDRE #01306519

For Lease

The Einstein Building



	1 Mile	2 Miles	3 Miles
Population			
TOTAL POPULATION	35,298	104,236	198,836
MEDIAN AGE	33.8	36.2	38.1
MEDIAN AGE (MALE)	32.8	35.6	37.3
MEDIAN AGE (FEMALE)	34.3	36.8	39.1
Households & Income			
TOTAL HOUSEHOLDS	16,040	42,597	76,989
# OF PERSONS PER HH	2.2	2.4	2.6
AVERAGE HH INCOME	\$77,672	\$91,590	\$101,590
AVERAGE HOUSE VALUE	\$576,326	\$697,897	\$719,231
Race			
% WHITE	63.1%	61.7%	60.8%
% BLACK	6.4%	8.6%	8.5%
% ASIAN	20.3%	16.2%	17.5%
% HAWAIIAN	0.6%	0.2%	0.2%
% INDIAN	0.4%	0.4%	0.4%
% OTHER	5.9%	9.7%	9.5%
Ethnicity			
% HISPANIC	26.8%	32.1%	30.3%

* Demographic data derived from 2010 US Census

John Martin
626.204.1503
jmartin@naicapital.com
CalDRE #01280892

Sheri McCanless
626.204.1508
smccanless@naicapital.com
CalDRE #01306519