



ICONIC RETAIL SPACE OPPORTUNITY

BRIC

SOUTH



JOIN INTERCONTINENTAL HOTEL AND SPECIAL LINEUP OF BAYFRONT RESTAURANTS AND RETAIL



- + Premier opportunity for **retail + restaurants** at the corner of Broadway + Pacific
- + Street-level retail with views of **San Diego Bay**
- + Attract both **tourists & locals** alike
- + San Diego's **first intercontinental hotel**
- + Located along the West Coast's **fastest growing cruise port**

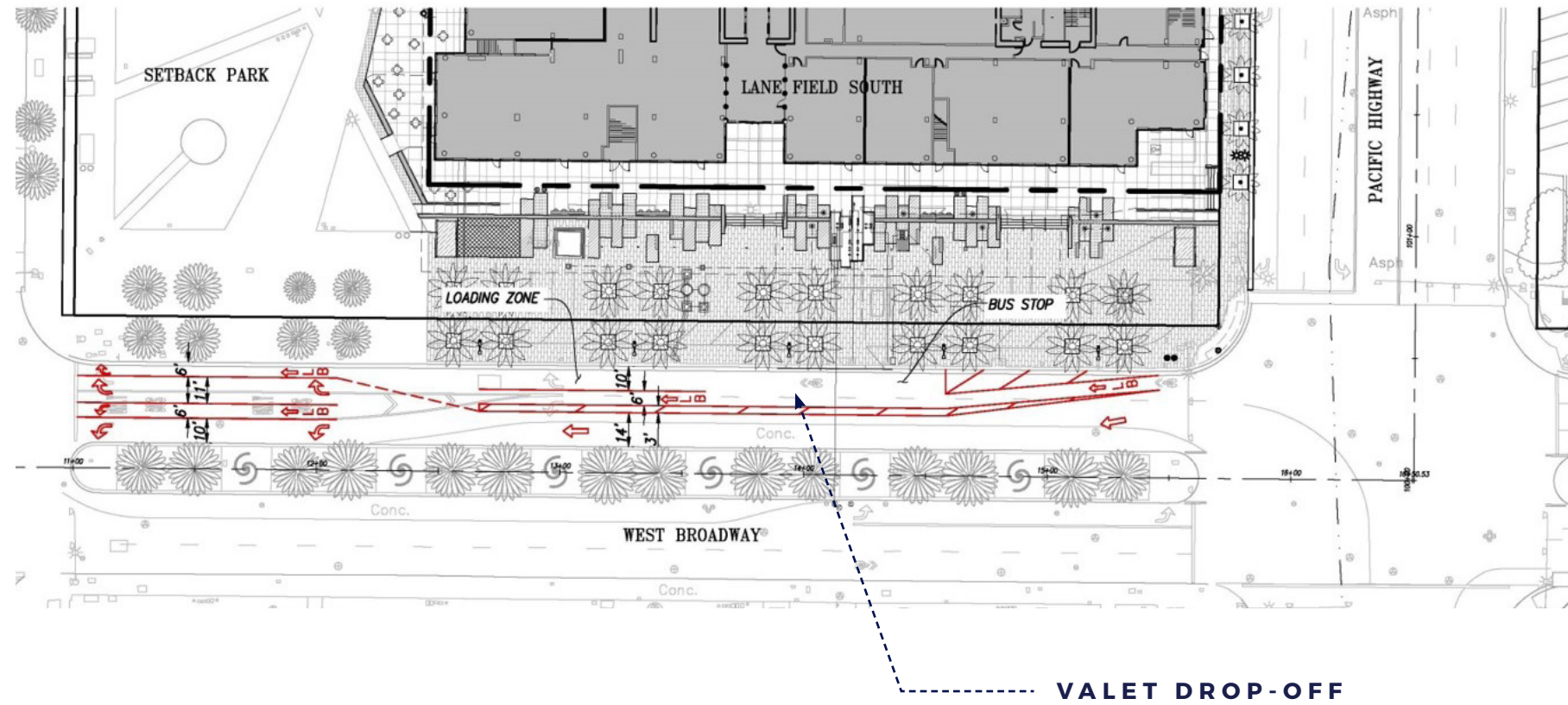
OPENING SEPTEMBER 2018



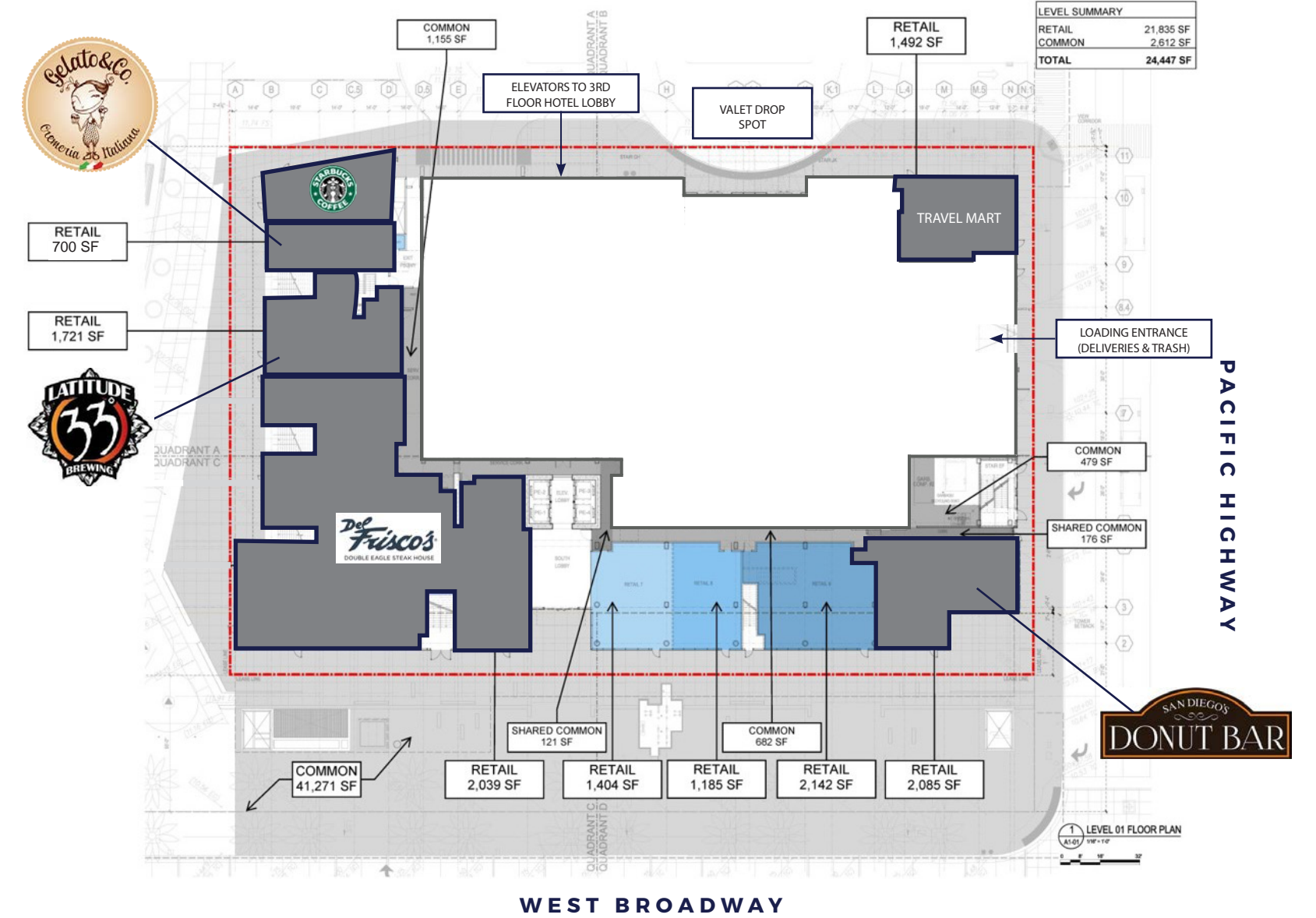
BROADWAY VALET DROP-OFF LANE

SITE PLANS

STREET-LEVEL AVAILABILITIES



NORTH HARBOR DRIVE





MILLION VISITORS ANNUALLY

San Diego



LARGEST CITY IN THE U.S.
1.3 Million residents in
the City Limits



RESIDENTIAL GROWTH
Downtown over 10 years

Downtown



\$30 MILLION DOLLAR
RENOVATION
of the Port

Port of
San Diego



AREA DETAILS

POPULATION
40,874

AVERAGE AGE
42

AVERAGE INCOME
\$70,000

11.2% OF HOUSEHOLDS EARN ABOVE \$150,000

11,786
HOTEL ROOMS IN 92101

75,000
DAILY EMPLOYEES DOWNTOWN

9
RESIDENTIAL HIGH-RISE BUILDINGS CURRENTLY UNDER CONSTRUCTION

75
ANNUAL CONVENTIONS WERE HELD, WITH AN ESTIMATED ATTENDANCE OF
MORE THAN **520,000 INDIVIDUALS** REPRESENTING APPROXIMATELY **\$560**
MILLION IN DIRECT SPENDING





NEIGHBORING TENANTS





RETAIL INSITE

JIM RINEHART

jrinehart@retailinsite.net
619.726.8557

MATT MOSER

mmoser@retailinsite.net
858.523.2096