



KEY FEATURES

- 1980 SF Medical Condo
- Rare opportunity to own in established medical submarket
- Excellent proximity to Novant's Forsyth Medical Center
- Easy Access to Business 40 and Silas Creek Parkway
- Sale / Leaseback Considered
- \$297,000

MEDICAL OFFICE CONDO

±1980 SF

FOR SALE

MAPLEWOOD PROFESSIONAL BUILDING

3111 Maplewood Ave. Suite 105
Winston Salem, NC 27103

LEARN MORE ABOUT THIS PROPERTY

JEFF ANDREWS, SIOR

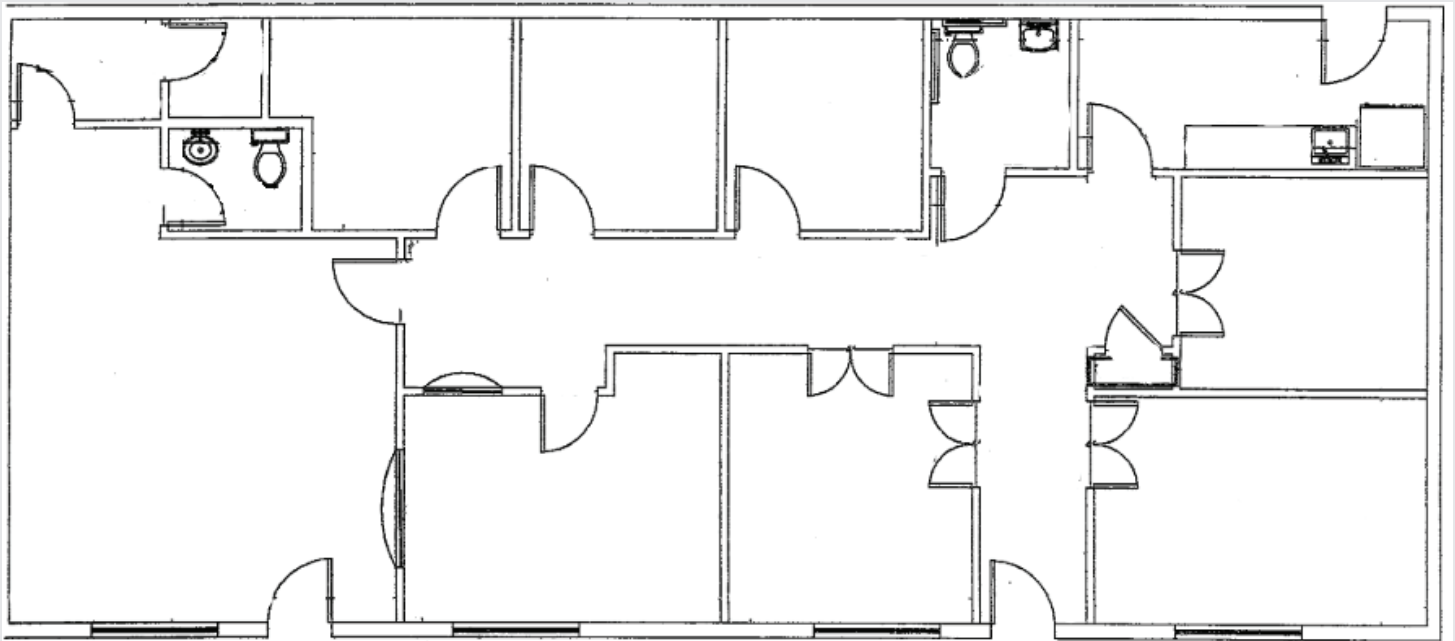
jeff@commercialrealtync.com

336.722.2583, ext 103

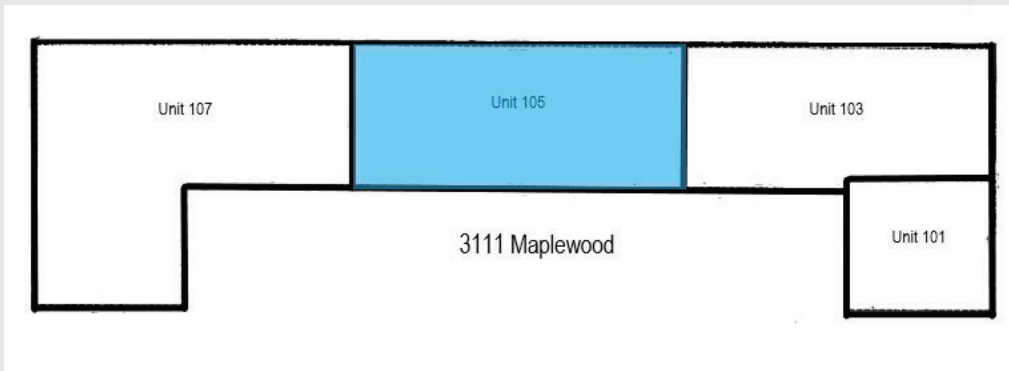
STEVE VALLOS

steve@commercialrealtync.com

336.722.2583, ext 105



3111 Maplewood Ave Unit 105



3111 MAPLEWOOD AVE. SUITE 105

LOCATION DETAILS

City	Winston Salem	State/Zip	NC, 27103	County	Forsyth
Zoning	HB	Tax PINS	6815-70-2766		

PROPERTY DETAILS

Property Type	Office Condo	Building SF	1,980 SF	Floors	1
Year Built	1970				

PRICING & TERMS

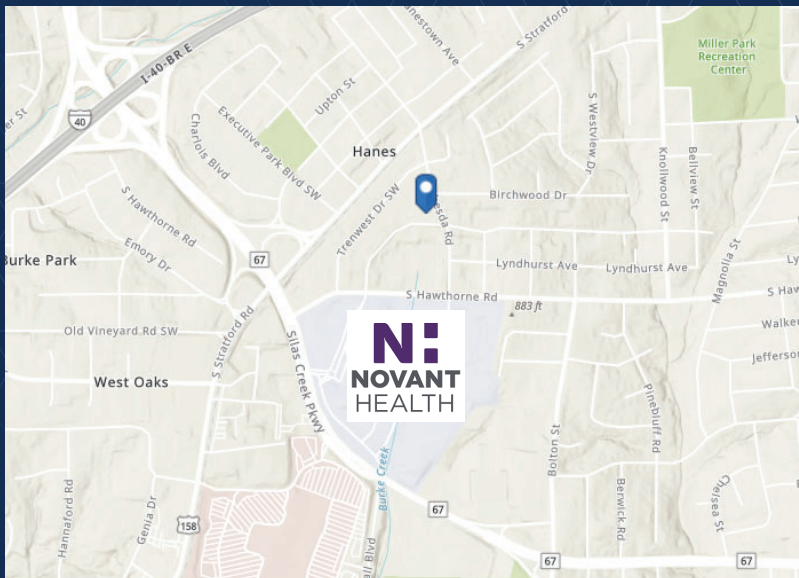
Price	\$297,000
Price /SF	\$150 / SF

COMMENTS

Owner will consider a sale / leaseback with terms to be negotiated.
 Building consists of 4 office condos with the potential to purchase the entire property.

3111 MAPLEWOOD AVE. STE 105 - MAPLEWOOD PROFESSIONAL BUILDING

FOR SALE



LOCATION FEATURES

- Located in Winston Salem's most established medical submarket
- Excellent proximity to Novant's Forsyth Medical Center
- Easy access to Business 40 and Silas Creek Parkway