

EXECUTIVE UNIVERSITY COURTS

4300 N. UNIVERSITY DRIVE | LAUDERHILL, FL 33351



FOR LEASE

OFFICE SUITES 1,000 SF ±

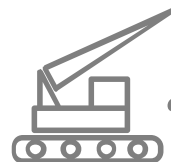
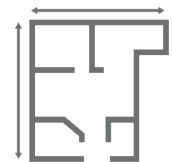
PROPERTY FEATURES

- Professional Class B Office Building with Spacious Outdoor Courtyard
- Exterior Monument Signage Available
- On-Site Management
- Spec Suites Available
- 4.5/1,000 SF Parking Ratio; Free of Charge
- Proximity to Banking, Retail and Restaurants
- 24 Hour HVAC (Separately Metered Suites)
- Fronting University Drive



**MONUMENT SIGNAGE
AVAILABLE**

**IMMEDIATE
OCCUPANCY
SPEC SUITES**



**MAJOR BUILDING
RENOVATIONS
COMPLETE**

For more information, please contact:

Donna Korn
Managing Director
+1 954 377-0498
donna.korn@cushwake.com

Beau Ladwig
Associate
+1 954 938-2610
beau.ladwig@cushwake.com

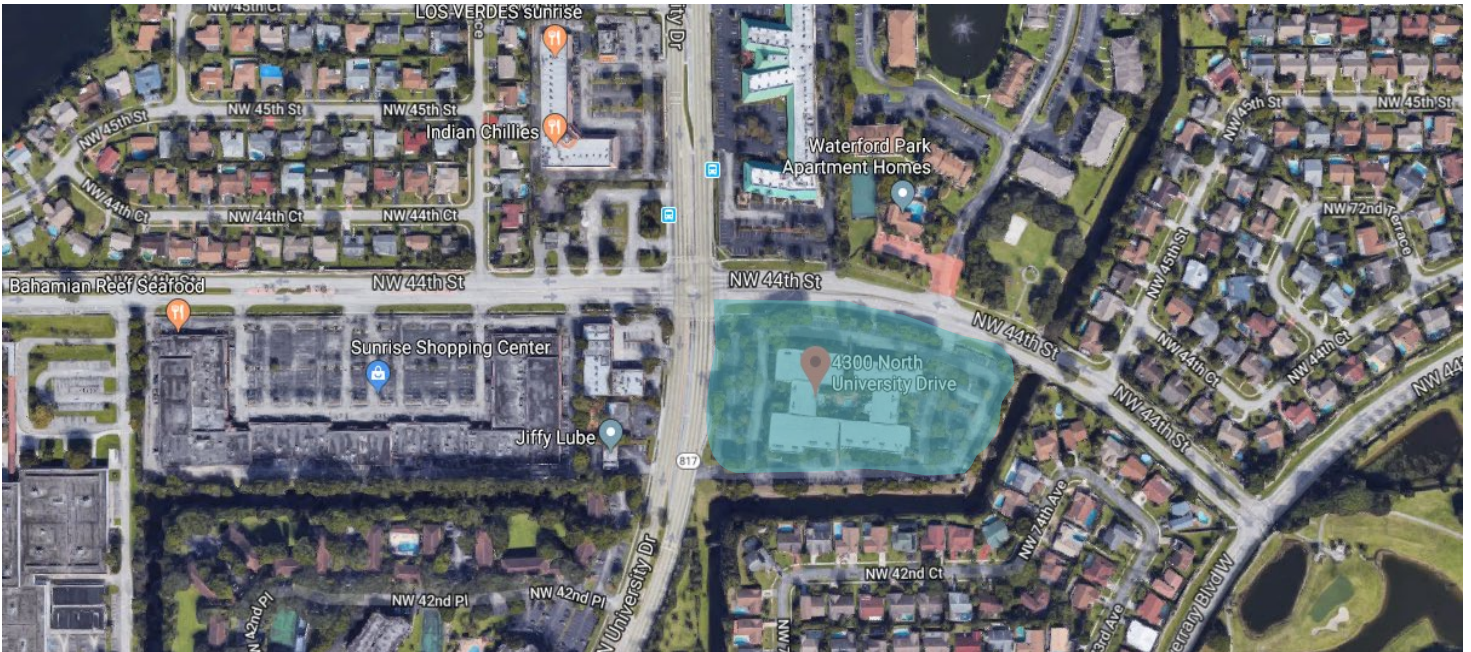
Cushman & Wakefield of Florida, LLC
515 East Las Olas Blvd., Suite 900
Fort Lauderdale, FL 33301
Cushwakesouthfl.com

©2019 Cushman & Wakefield. All rights reserved. The information contained in this communication is strictly confidential. This information has been obtained from sources believed to be reliable but has not been verified. NO WARRANTY OR REPRESENTATION, EXPRESS OR IMPLIED, IS MADE AS TO THE CONDITION OF THE PROPERTY (OR PROPERTIES) REFERENCED HEREIN OR AS TO THE ACCURACY OR COMPLETENESS OF THE INFORMATION CONTAINED HEREIN, AND SAME IS SUBMITTED SUBJECT TO ERRORS, OMISSIONS, CHANGE OF PRICE, RENTAL OR OTHER CONDITIONS, WITHDRAWAL WITHOUT NOTICE, AND TO ANY SPECIAL LISTING CONDITIONS IMPOSED BY THE PROPERTY OWNER(S). ANY PROJECTIONS, OPINIONS OR ESTIMATES ARE SUBJECT TO UNCERTAINTY AND DO NOT SIGNIFY CURRENT OR FUTURE PROPERTY PERFORMANCE.

EXECUTIVE UNIVERSITY COURTS



4300 NORTH UNIVERSITY DRIVE, Lauderdale, FL 33351



BUILDING SF	97,125 SF
RENTAL RATE	\$17.00 - \$20.00 PSF, Modified Gross-Net of Electric & Janitorial
PARKING	4.5/1,000 SF, free of charge
AVAILABLE SUITES	1,099 SF – 2,193 SF
PROPERTY WEBSITE	https://executiveuniversitycourts.com

For more information, please contact:

Donna Korn
Managing Director
+1 954 377-0498
donna.korn@cushwake.com

Beau Ladwig
Associate
+1 954 938-2610
beau.ladwig@cushwake.com

Cushman & Wakefield of Florida, LLC
515 East Las Olas Blvd., Suite 900
Fort Lauderdale, FL 33301
Cushwakesouthfl.com

©2019 Cushman & Wakefield. All rights reserved. The information contained in this communication is strictly confidential. This information has been obtained from sources believed to be reliable but has not been verified. NO WARRANTY OR REPRESENTATION, EXPRESS OR IMPLIED, IS MADE AS TO THE CONDITION OF THE PROPERTY (OR PROPERTIES) REFERENCED HEREIN OR AS TO THE ACCURACY OR COMPLETENESS OF THE INFORMATION CONTAINED HEREIN, AND SAME IS SUBMITTED SUBJECT TO ERRORS, OMISSIONS, CHANGE OF PRICE, RENTAL OR OTHER CONDITIONS, WITHDRAWAL WITHOUT NOTICE, AND TO ANY SPECIAL LISTING CONDITIONS IMPOSED BY THE PROPERTY OWNER(S). ANY PROJECTIONS, OPINIONS OR ESTIMATES ARE SUBJECT TO UNCERTAINTY AND DO NOT SIGNIFY CURRENT OR FUTURE PROPERTY PERFORMANCE.