

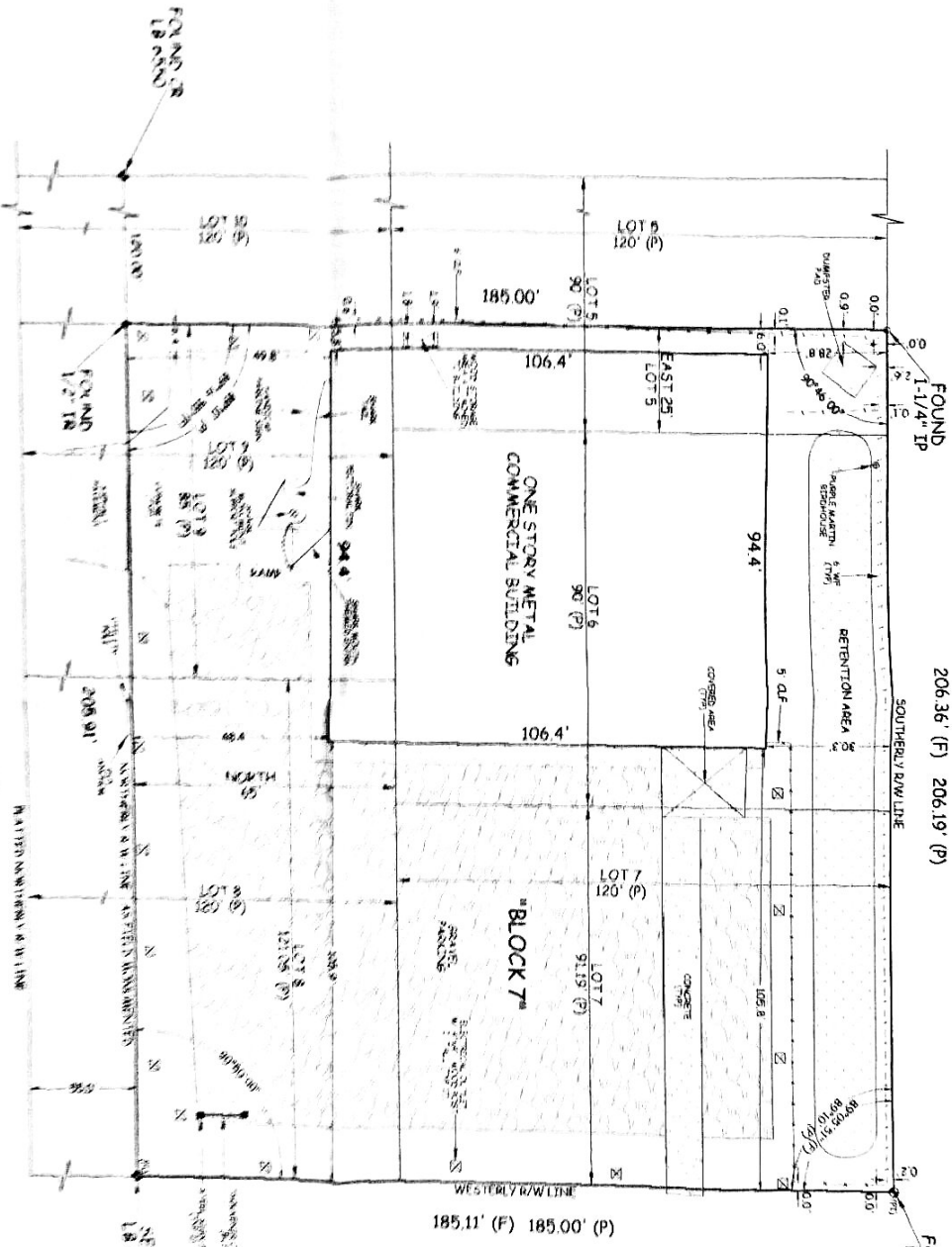
W. W. CURLE
LAND SURVEYING, INC.

1900 Hwy 875, Suite M
 Navarre, Florida 32566
 (850) 939-8787
 (850) 939-8797 Fax
 wwc@curle1@bellsouth.net
 Licensed Business (LB) 6590

THIRD STREET
 (50' R/W)

206.36' (F) 206.19' (P)

MAGNOLIA AVENUE (P)
BLUE TIP DRIVE (F)
 (58' R/W)



GENERAL NOTES

1. THIS PLAT IS A PART OF A LARGER PLAT OF THE SAME NAME AND DATE, THE ENTIRE PLAT BEING ON FILE IN THE PUBLIC RECORDS OF THE COUNTY OF ALACHUA, FLORIDA.

2. THE AREA OF THIS PLAT IS 1.1880 ACRES, AS SHOWN BY THE CALCULATIONS HEREON.

3. THE BOUNDARIES OF THIS PLAT ARE AS SHOWN BY THE CALCULATIONS HEREON.

4. THE AREA OF THIS PLAT IS 1.1880 ACRES, AS SHOWN BY THE CALCULATIONS HEREON.

5. THE BOUNDARIES OF THIS PLAT ARE AS SHOWN BY THE CALCULATIONS HEREON.

6. THE AREA OF THIS PLAT IS 1.1880 ACRES, AS SHOWN BY THE CALCULATIONS HEREON.

7. THE BOUNDARIES OF THIS PLAT ARE AS SHOWN BY THE CALCULATIONS HEREON.

8. THE AREA OF THIS PLAT IS 1.1880 ACRES, AS SHOWN BY THE CALCULATIONS HEREON.

9. THE BOUNDARIES OF THIS PLAT ARE AS SHOWN BY THE CALCULATIONS HEREON.

10. THE AREA OF THIS PLAT IS 1.1880 ACRES, AS SHOWN BY THE CALCULATIONS HEREON.

LEGAL DESCRIPTION
 LOT 5 AND 7 AND THE EAST 20 FEET OF LOT 6 AND THE PORTION OF LOT 10
 CONTAINING BLOCK 7 (SEE) PLAT ABOVE ACCORDING TO THE PLAT THEREOF
 AS BEING SHOWN IN PLAT BOOK 8 AT PAGE 88 OF THE PUBLIC RECORDS OF
 ALACHUA COUNTY, FLORIDA

Checked by: Mary Sautter
 Drawing No. 14 (1000)

W. W. CURLE, P.E.
 Surveyor
 License No. 6590