



For Sale

Prime Warehouse or Light Manufacturing Building

Building Specification

- **Total Building SF:** +/-18,750 SF
- **Office SF:** +/- 1,500 SF
- **Total Land SF:** +/-26,225 SF
- **Parking:** 20 spaces (expandable)
- **Zoning:** N/A Palisades Park
- **Taxes:** \$1.23 PSF
- **Ceiling Height:** 16'-18' Clear
- **Loading Docks:** 3 Exterior & 3 Interior
- **Power:** 2 x 400 Amp – 3 Phase
- **4 Miles to GWB**
- **Current Use: Light Manufacture and Distribution of Food products.**
- **USFDA Certified Facility**

**235-239 Commercial
Ave. Palisades Park,
NJ**

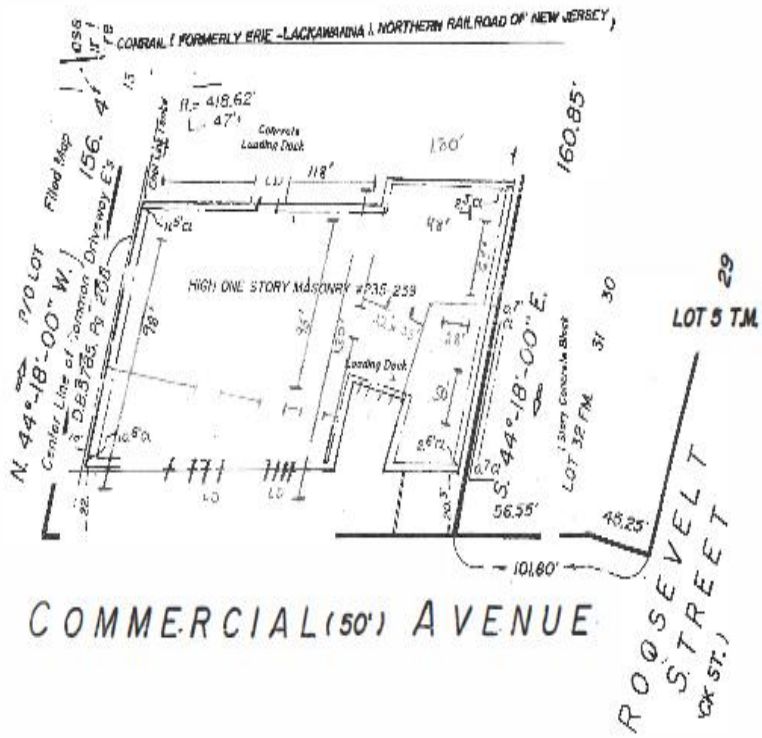
Jeffrey MacFarlane
Vice President
+1 201 848 6111
macfarlanej@mcbriecorp.com

David Yao
Senior Vice President
+1 201 848 6114
yaod@mcbriecorp.com

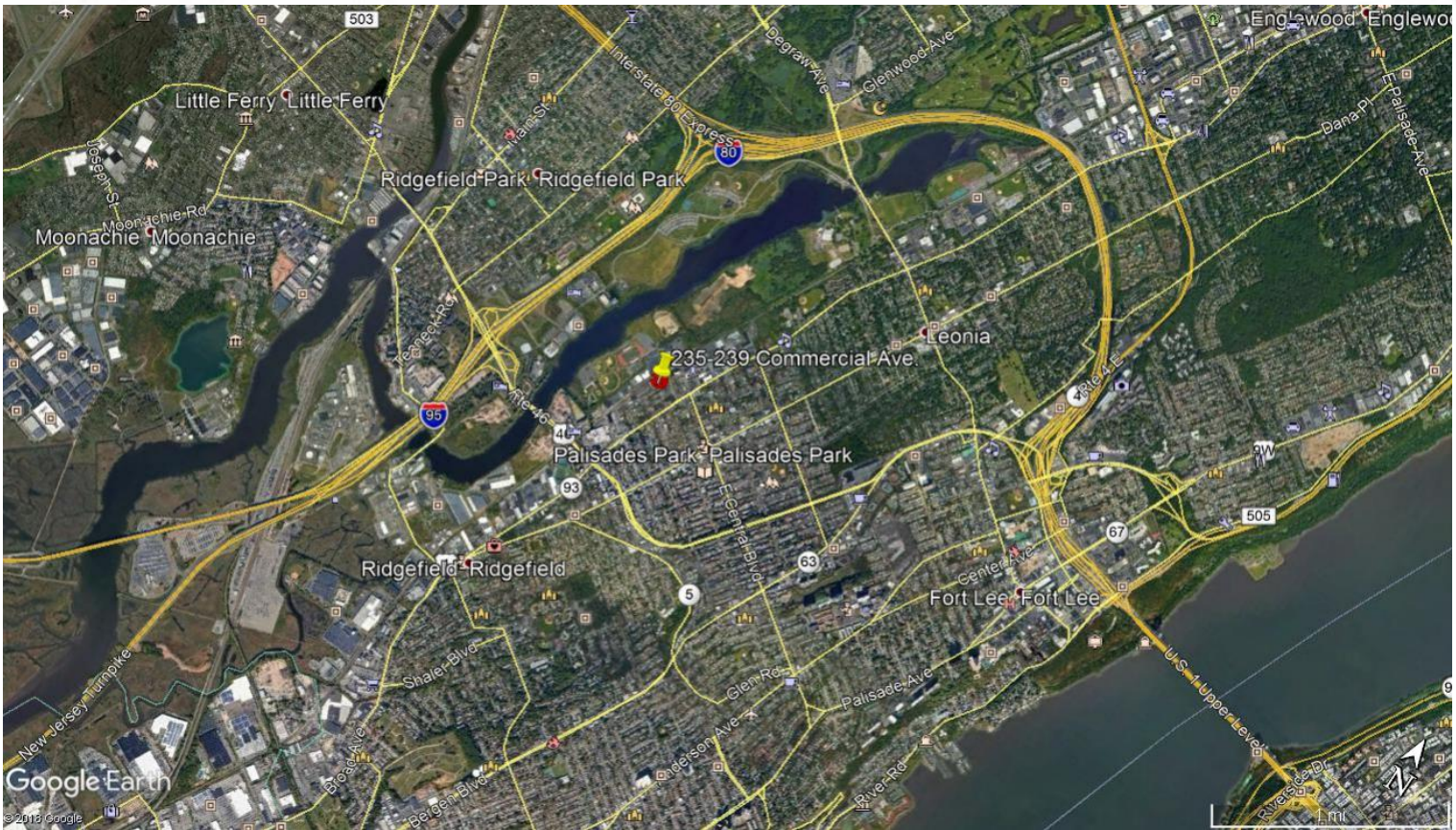
John D' Amato
Senior Vice President
+1 201 848 6113
damatoj@mcbriecorp.com



Survey



Aerial



Note: This information is subject to errors, change of price, rental conditions, withdrawals, without notice, and to any special listing condition by our principals.

