



MEDICAL OFFICE SPACE FOR LEASE MEDICAL PLAZAS 1 & 2

9711 & 9715 Medical Center Drive • Rockville, Maryland



Located In the 300-Acre Montgomery County Life Sciences Center

PROPERTY INFORMATION:

9715 MEDICAL CENTER DRIVE:

BUILDING SIZE: 67,029 SF; 5 Stories

AVAILABLE SPACE:

- ▶ Suite 102: 1,498 SF
 - ▶ Suite 112: 738 SF
 - ▶ Suite 330: 5,024 SF
 - ▶ Suite 400: 911 SF
 - ▶ Suite 436: 1,884 SF
 - ▶ Suite 528: 3,086 SF
 - ▶ Suite 530: 1,657 SF
- Suites 102 and 112 are available
for a contiguous 2,236 SF*
- Suites 528 and 530 are available
for a contiguous 4,743 SF*

9711 MEDICAL CENTER DRIVE:

BUILDING SIZE: 46,445 SF

AVAILABLE SPACE:

- ▶ Suite 103: 1,047 SF
- ▶ Suite 214: 1,326 SF
- ▶ Suite 300: 985 SF
- ▶ Suite 305: 1,151 SF
- ▶ Suite 310: 1,335 SF

Immediate Occupancy Available

- ◆ Competitive rental rates & terms 1-10 years
- ◆ 4.0 parking spaces/1,000 SF leased
- ◆ Ample tenant allowances
- ◆ Free tenant parking
- ◆ Free 3 hour visitor parking

FOR LEASING OPPORTUNITIES CONTACT:

CRAIG BURTON

Office: 301.795.1456

CBurton@PROMARKPARTNERS.com



MEDICAL OFFICE SPACE FOR LEASE MEDICAL PLAZAS 1 & 2

9711 & 9715 Medical Center Drive • Rockville, Maryland

PROPERTY FEATURES:

- Covered walkway inside connects 9715 Medical Center Dr. to Shady Grove Adventist Hospital
- Building is located on Shady Grove Adventist Hospital campus
- Onsite pharmacy and deli located in 9715 Medical Center Drive
- 1 block walk to Fallsgrove Village Center
- 2 miles from Rio / Washingtonian Center
- 2 miles from Crown Farm Town Center
- Owner managed



9711 & 9715 Medical Center Drive are located on **Shady Grove Adventist Hospital** campus



1 block walk to **Fallsgrove Village Center**



2 miles from **Rio / Washingtonian Center**



2 miles from **Crown Farm Town Center**



Interior of 9715 Medical Center Dr.



Exterior images of 9711 Medical Center Drive





MEDICAL OFFICE SPACE FOR LEASE MEDICAL PLAZAS 1 & 2

9711 & 9715 Medical Center Drive • Rockville, Maryland

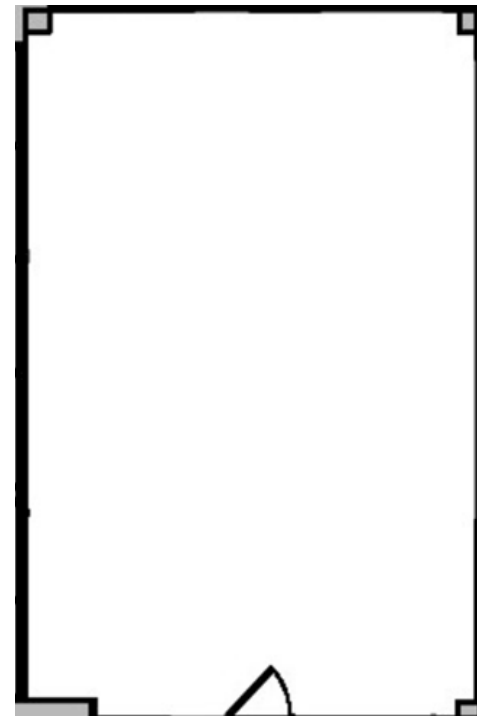
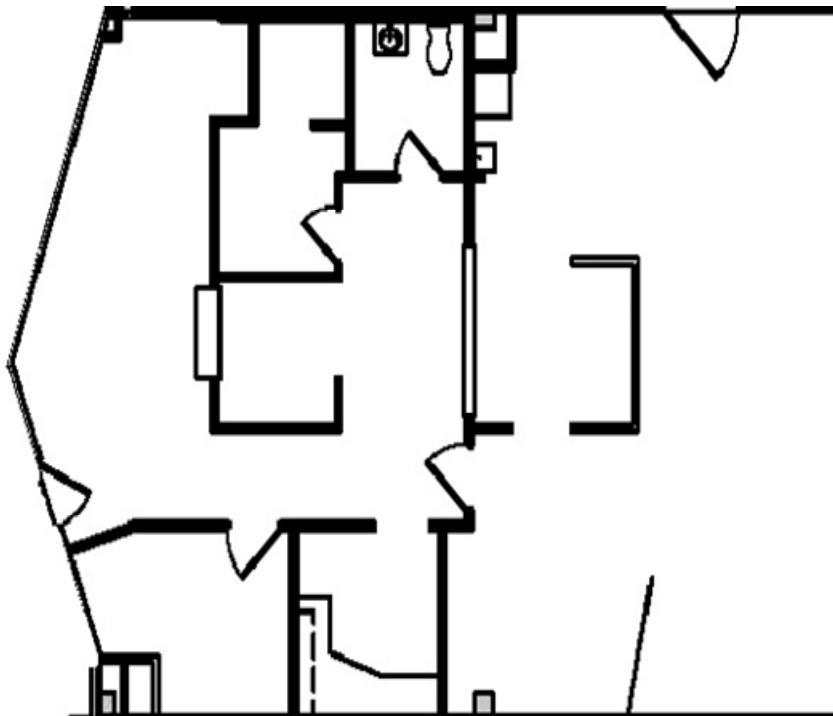
FLOOR PLANS • 9715 Medical Center Drive



Enclosed walkway inside 9715 Medical Center Drive connects visitors and tenants with Shady Grove Adventist Hospital.

Suite 102 • 1,498 SF

Suite 112 • 738 SF



Available for a contiguous 2,236 SF



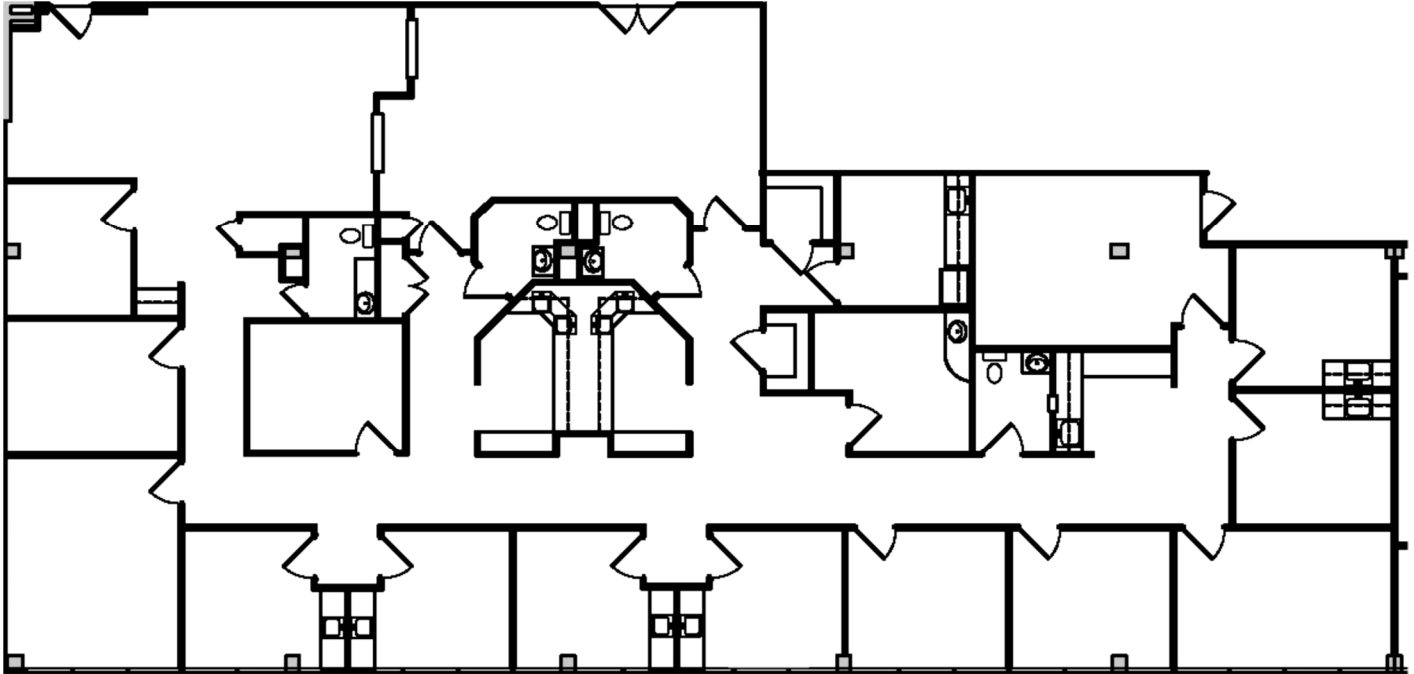
MEDICAL OFFICE SPACE FOR LEASE

MEDICAL PLAZAS 1 & 2

9711 & 9715 Medical Center Drive • Rockville, Maryland

FLOOR PLANS • 9715 Medical Center Drive

Suite 330 • 5,024 SF





MEDICAL OFFICE SPACE FOR LEASE

MEDICAL PLAZAS 1 & 2

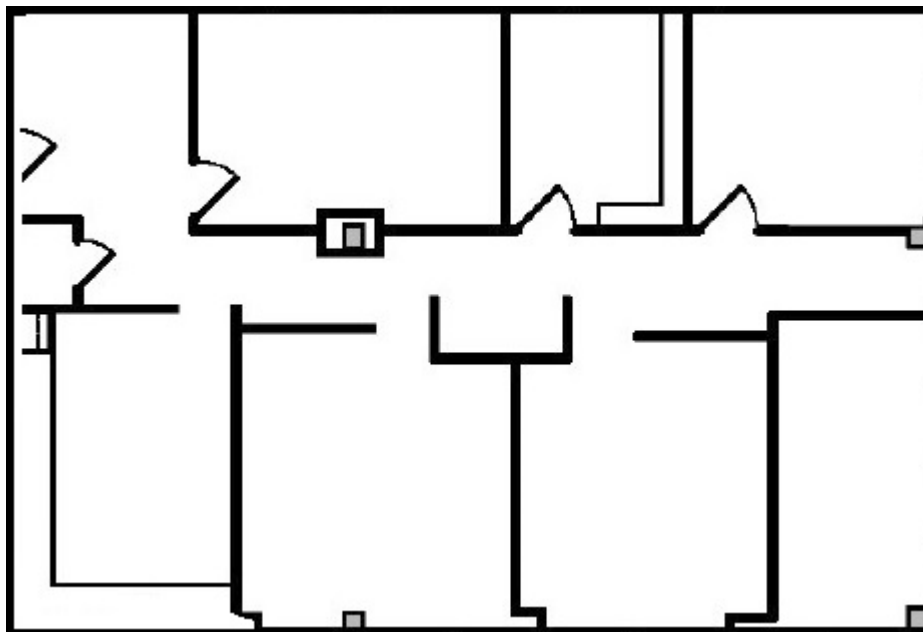
9711 & 9715 Medical Center Drive • Rockville, Maryland

FLOOR PLANS • 9715 Medical Center Drive

Suite 400 • 911 SF



Suite 436 • 1,884 SF





MEDICAL OFFICE SPACE FOR LEASE

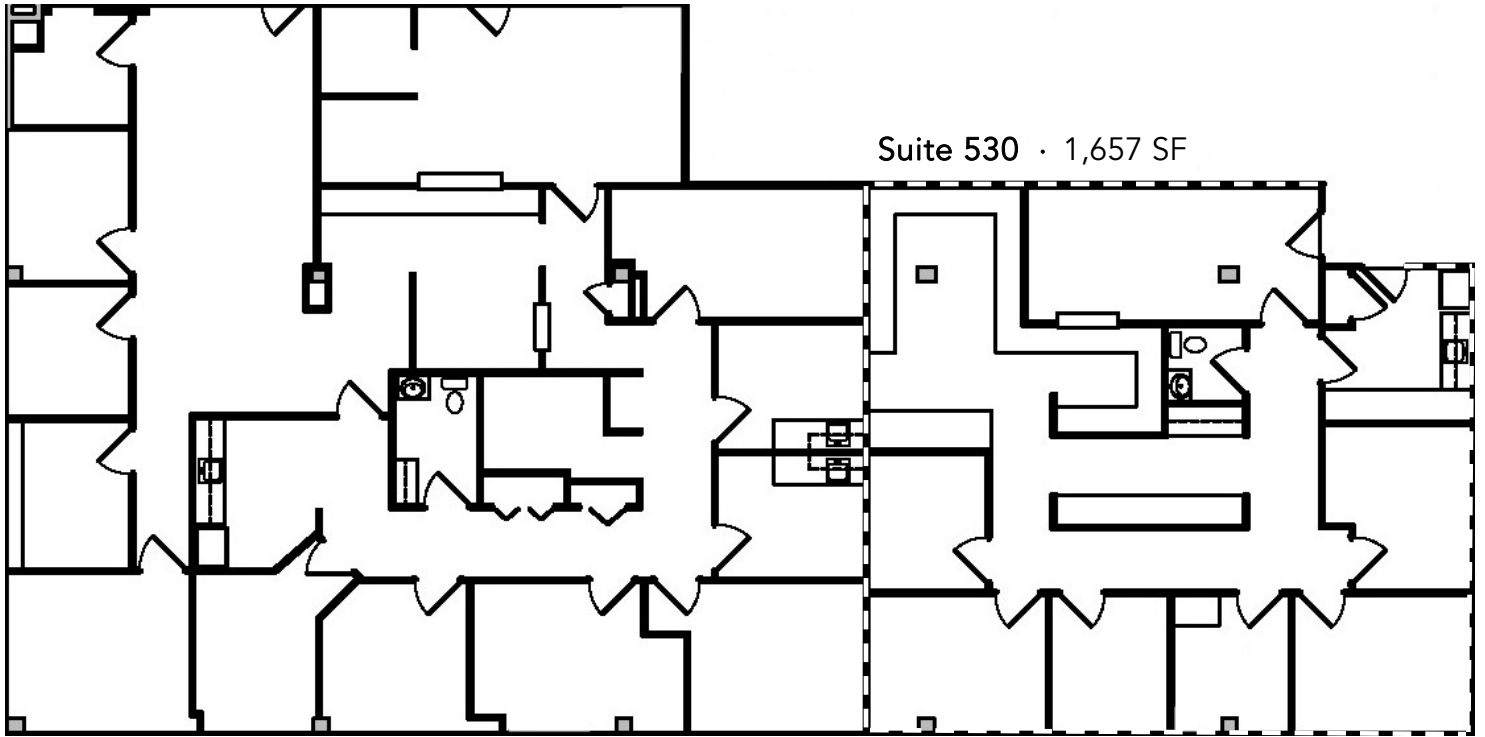
MEDICAL PLAZAS 1 & 2

9711 & 9715 Medical Center Drive • Rockville, Maryland

FLOOR PLANS • 9715 Medical Center Drive

Suite 528 • 3,086 SF

Suite 530 • 1,657 SF



Available for a contiguous 4,743 SF



MEDICAL OFFICE SPACE FOR LEASE

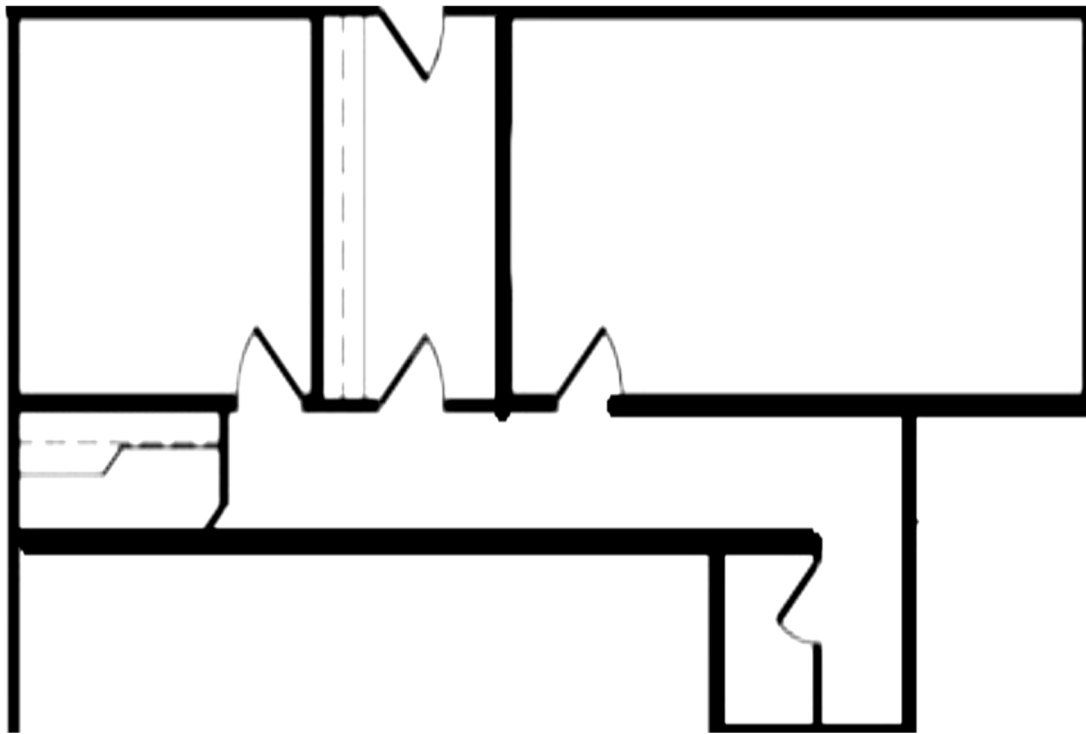
MEDICAL PLAZAS 1 & 2

9711 & 9715 Medical Center Drive • Rockville, Maryland

FLOOR PLANS • 9711 Medical Center Drive



Suite 103 • 1,047 SF





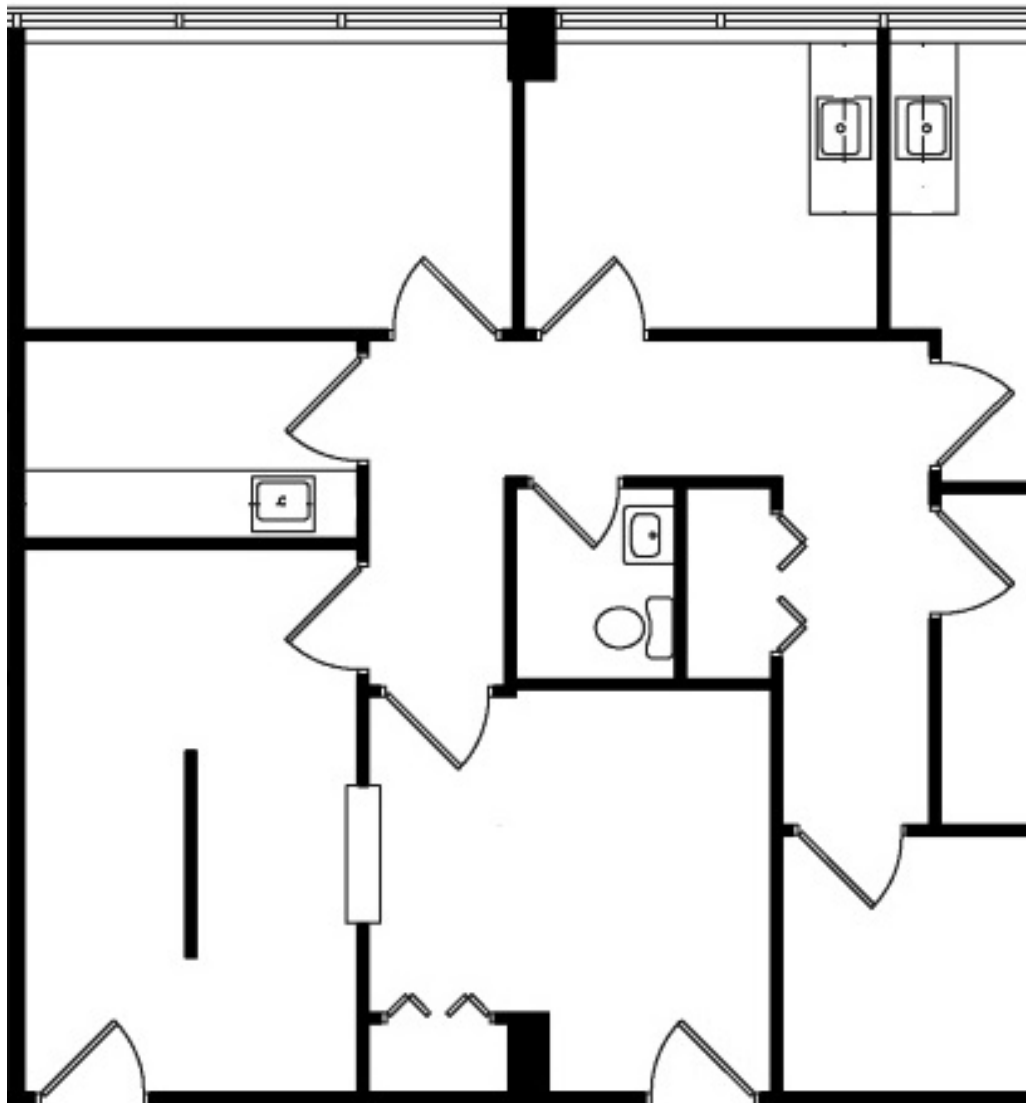
MEDICAL OFFICE SPACE FOR LEASE

MEDICAL PLAZAS 1 & 2

9711 & 9715 Medical Center Drive • Rockville, Maryland

FLOOR PLANS • 9711 Medical Center Drive

Suite 214 • 1,326 SF





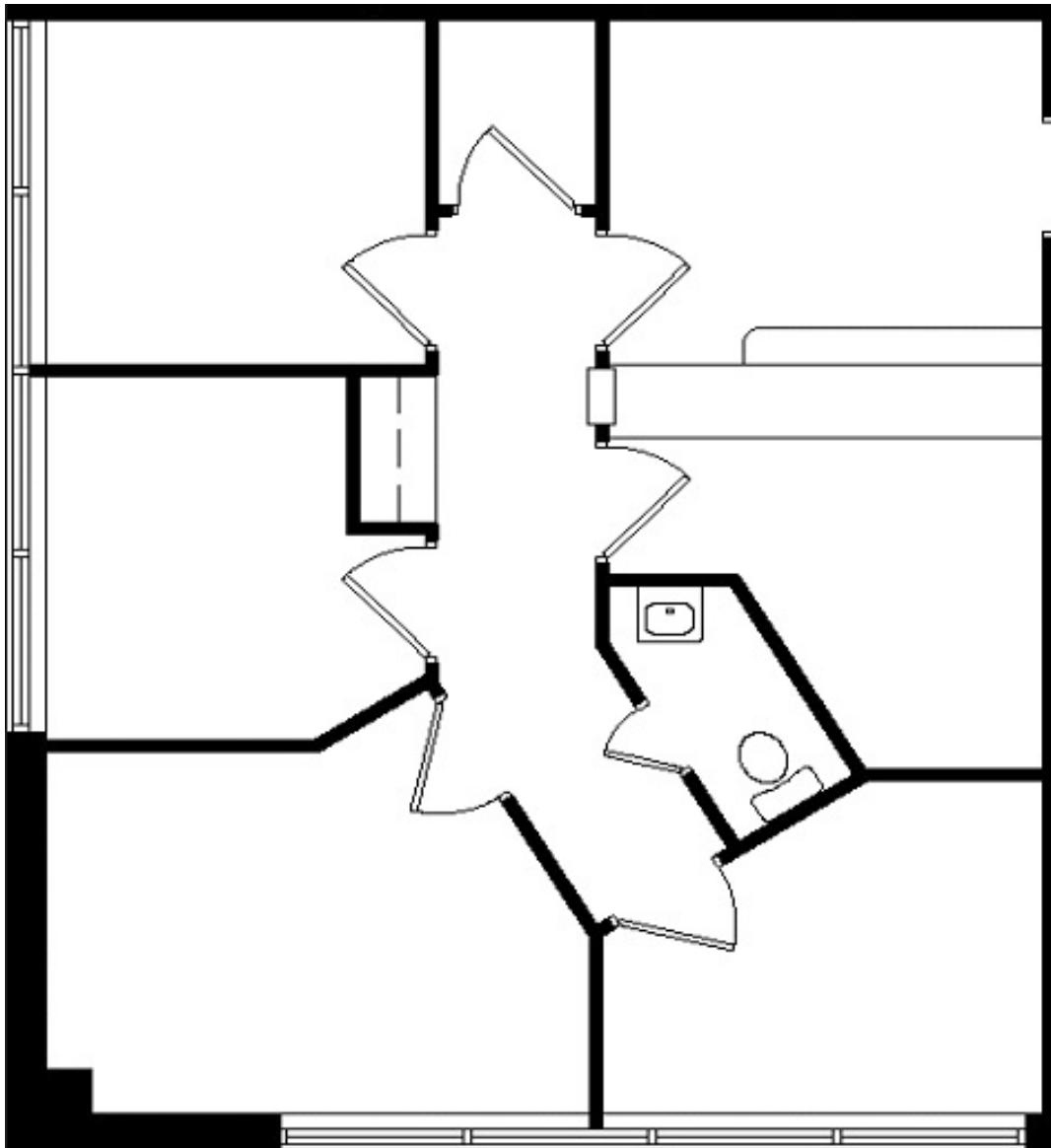
MEDICAL OFFICE SPACE FOR LEASE

MEDICAL PLAZAS 1 & 2

9711 & 9715 Medical Center Drive • Rockville, Maryland

FLOOR PLANS • 9711 Medical Center Drive

Suite 300 • 985 SF





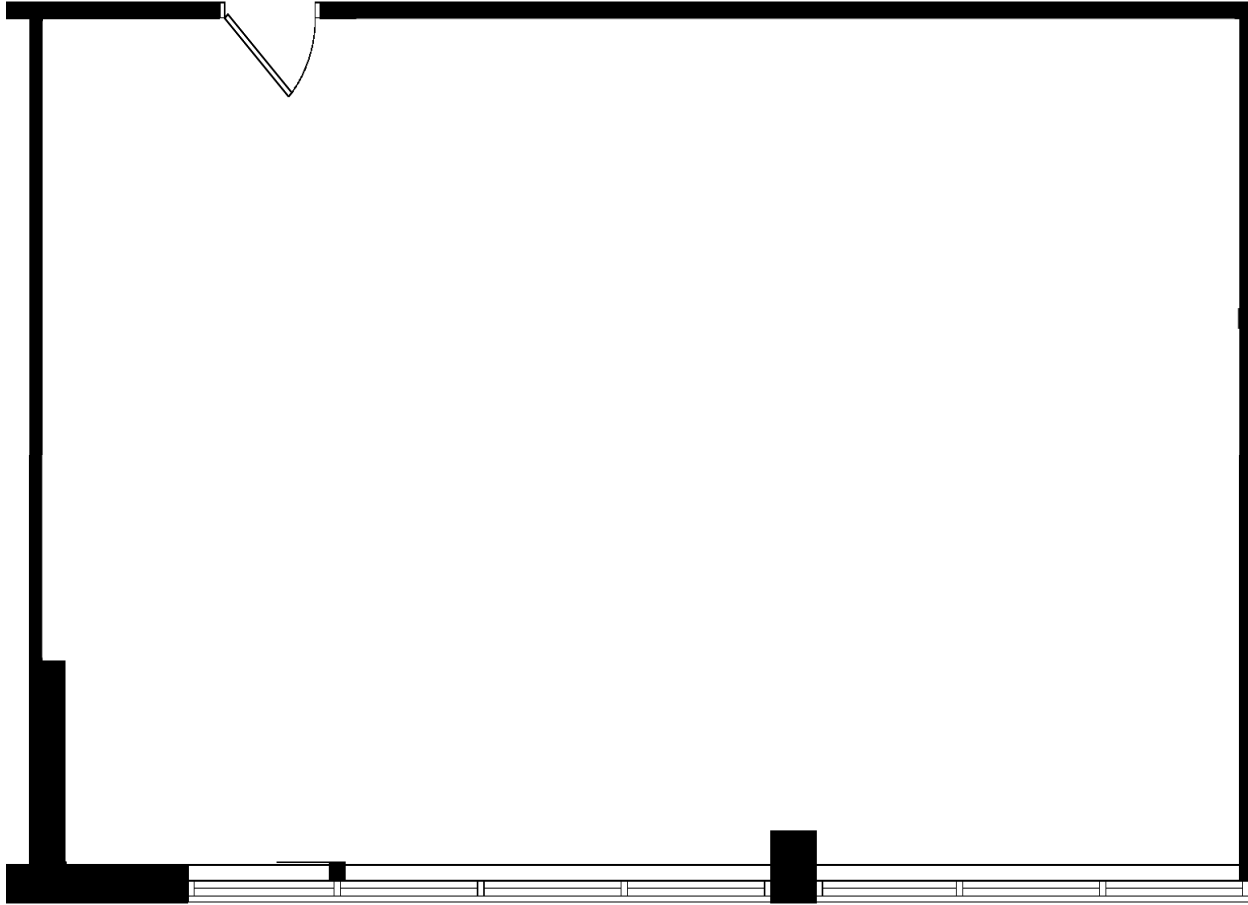
MEDICAL OFFICE SPACE FOR LEASE

MEDICAL PLAZAS 1 & 2

9711 & 9715 Medical Center Drive • Rockville, Maryland

FLOOR PLANS • 9711 Medical Center Drive

Suite 305 • 1,151 SF





MEDICAL OFFICE SPACE FOR LEASE

MEDICAL PLAZAS 1 & 2

9711 & 9715 Medical Center Drive • Rockville, Maryland

FLOOR PLANS • 9711 Medical Center Drive

Suite 310 • 1,335 SF

