

CenterPointe Business Park



**100, 200, 300 N. MULLAN BUILDINGS AND CAMPUS
SPOKANE VALLEY, WA 99206**

Office Space For Lease

<u>Suite</u>	<u>Sq. Ft.</u>	<u>Monthly Gross Price All Inclusive (tenant responsible for janitorial)</u>	
118	450 SF	\$500.00	Open Room
202	1,000 SF	\$1,200.00	Reception Area and Three Offices
119	1,250 SF	\$1,550.00	Reception Desk, Two Offices and Break Room
219	1,300 SF	\$1,500.00	Reception Area, Three Offices, and Sink
204	2,100 SF	\$2,695.00	Medical / Dental Suite, Reception, Offices and Break Room
203	2,600 SF	\$3,250.00	Reception Area, Multiple Private Offices, Open Space, Break Room and Storage
203	2,800 SF	\$3,500.00	Reception Area, Multiple Private Offices, Open Space, Break Room and Storage

Excess Parking

Onsite Security

Park-Like Setting

Onsite Property Management

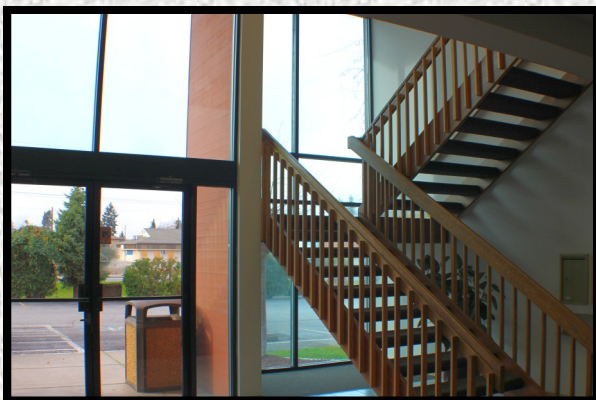
Tenant Improvement Packages



Gene Arger, Broker
G. Arger Co. Real Estate Inc.
(509) 926-5311 office
(509) 844-8814 cell
ggarger@argерco.com
www.argerco.com



CenterPointe Business Park



CenterPointe Business Park

***100, 200, 300 N. Mullan Buildings and Campus
Spokane Valley, WA 99206***

