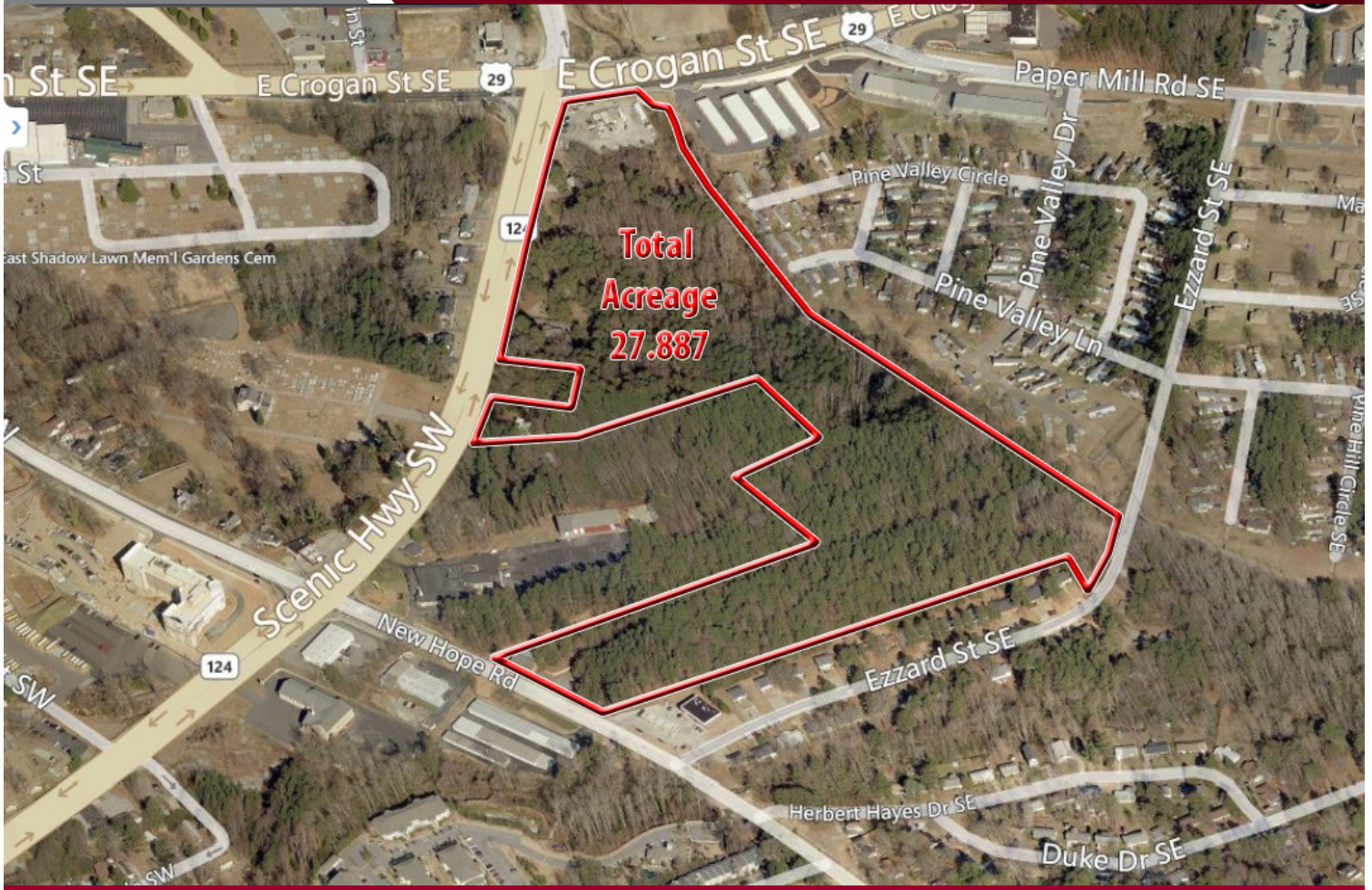


# For Sale

## Lawrenceville Development Site

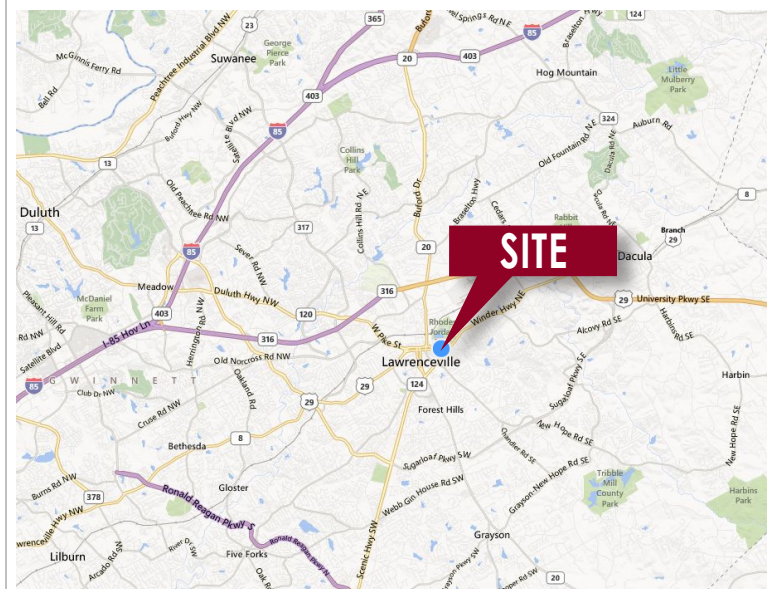
SCENIC HIGHWAY 124 & E CROGAN STREET, LAWRENCEVILLE, GA, 30046



### FEATURES:

- 27.887 Acres zoned BG, RS-150, and RM-12
- Can be subdivided
- Additional acreage availability possible
- Close proximity to Rhodes Jordan Park, Georgia Gwinnett College, Gwinnett Medical Center, and Gwinnett County Airport
- Property produces rental income

See other side of flyer for more information



All information furnished regarding property for sale, rental or financing is from sources deemed reliable, but no warranty or representation is made to the accuracy thereof and same is submitted to errors, omissions, change of price, rental or other conditions prior to sale, lease or financing or withdrawal without notice. No liability of any kind is to be imposed on the broker herein.



For more information contact:  
John Maddox  
jmaddox@lee-associates.com  
D 404.442.2826

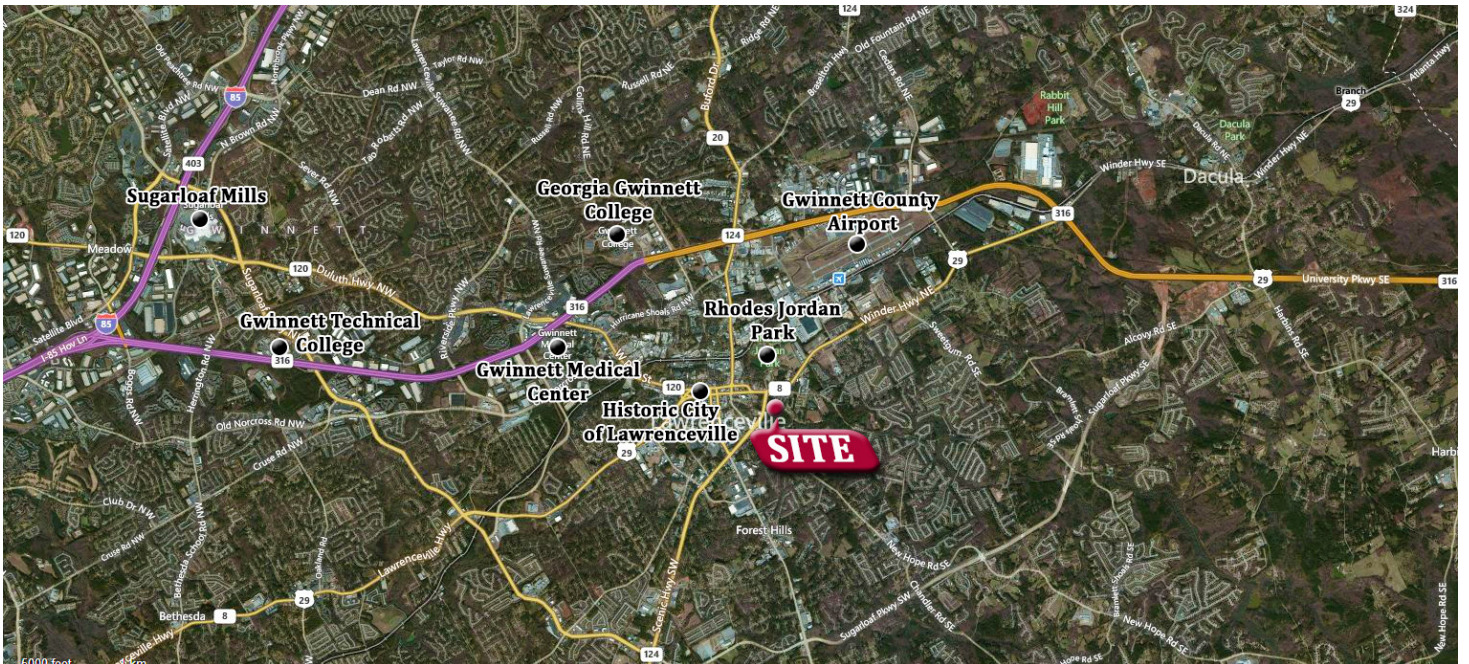
lee-associates.com



# For Sale

## Lawrenceville Development Site

SCENIC HIGHWAY 124 & E CROGAN STREET, LAWRENCEVILLE, GA, 30046



All information furnished regarding property for sale, rental or financing is from sources deemed reliable, but no warranty or representation is made to the accuracy thereof and same is submitted to errors, omissions, change of price, rental or other conditions prior to sale, lease or financing or withdrawal without notice. No liability of any kind is to be imposed on the broker herein.



For more information contact:  
John Maddox  
jmaddox@lee-associates.com  
D 404.442.2826

lee-associates.com

