



FOR LEASE

Valley View Medical Park

350 SOUTH 38TH COURT, RENTON, WA



Class A medical office building in
outstanding location

BRIAN CLAPP
206.248.7316
brian.clapp@kidder.com

SPENCER CLAPP
206.248.7427
spencer.clapp@kidder.com

**Kidder
Mathews**

This information supplied herein is from sources we deem reliable. It is provided without any representation, warranty, or guarantee, expressed or implied as to its accuracy. Prospective Buyer or Tenant should conduct an independent investigation and verification of all matters deemed to be material, including, but not limited to, statements of income and expenses. Consult your attorney, accountant, or other professional advisor.

KIDDER.COM

FOR LEASE

Valley View Medical Park

350 SOUTH 38TH COURT, RENTON, WA



KIDDER.COM

This information supplied herein is from sources we deem reliable. It is provided without any representation, warranty, or guarantee, expressed or implied as to its accuracy. Prospective Buyer or Tenant should conduct an independent investigation and verification of all matters deemed to be material, including, but not limited to, statements of income and expenses. Consult your attorney, accountant, or other professional advisor.

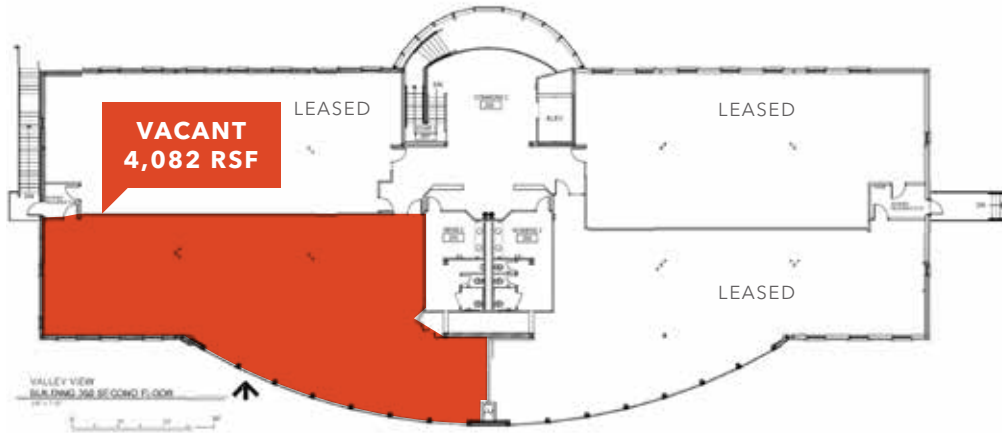
km Kidder Mathews

FOR LEASE

Valley View Medical Park

350 SOUTH 38TH COURT, RENTON, WA

Second Floor



DIVISIBLE:



Starting at \$26.00 PSF, NNN

Suites available:

Second floor: 4,082 RSF
(divisible to approximately
1,000 RSF)

First floor: 1,890 RSF

Current tenants include a
Family Dentist, Orthodontist,
Oral Surgeon, Dermatology
and Prosthetics

Monument signage on
Talbot next to Valley Medical

Covered parking available

BRIAN CLAPP

206.248.7316

brian.clapp@kidder.com

SPENCER CLAPP

206.248.7427

spencer.clapp@kidder.com

KIDDER.COM

This information supplied herein is from sources we deem reliable. It is provided without any representation, warranty, or guarantee, expressed or implied as to its accuracy. Prospective Buyer or Tenant should conduct an independent investigation and verification of all matters deemed to be material, including, but not limited to, statements of income and expenses. Consult your attorney, accountant, or other professional advisor.

km Kidder
Mathews

FOR LEASE

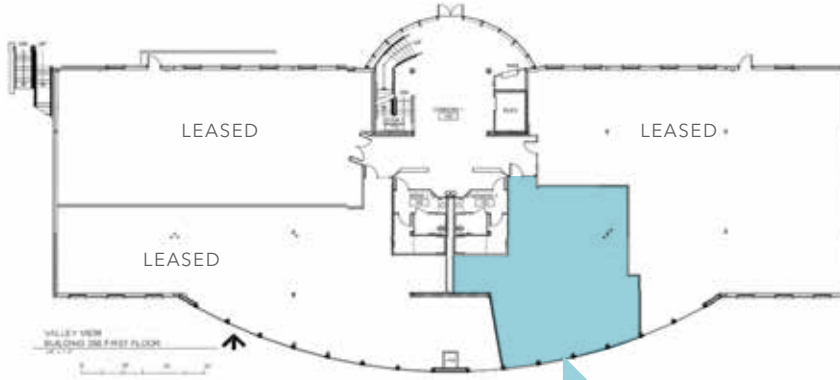
Valley View Medical Park

350 SOUTH 38TH COURT, RENTON, WA

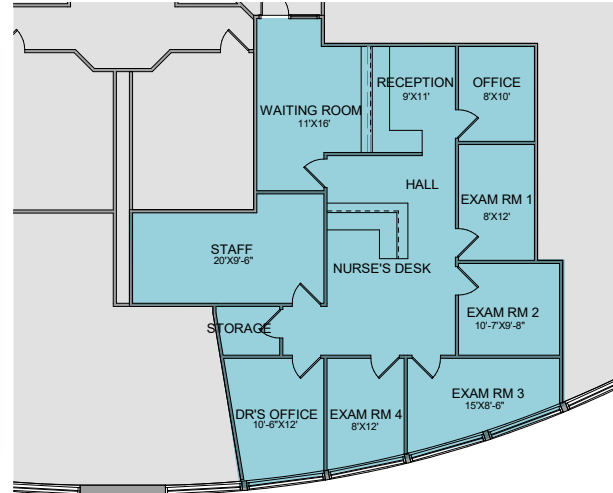
1,890

RSF TOTAL

First Floor



**VACANT
1,890 RSF**



BRIAN CLAPP
206.248.7316
brian.clapp@kidder.com

SPENCER CLAPP
206.248.7427
spencer.clapp@kidder.com

KIDDER.COM

This information supplied herein is from sources we deem reliable. It is provided without any representation, warranty, or guarantee, expressed or implied as to its accuracy. Prospective Buyer or Tenant should conduct an independent investigation and verification of all matters deemed to be material, including, but not limited to, statements of income and expenses. Consult your attorney, accountant, or other professional advisor.

km Kidder Mathews

FOR LEASE

Valley View Medical Park

350 SOUTH 38TH COURT, RENTON, WA



BRIAN CLAPP
Senior Vice President
206.248.7316
brian.clapp@kidder.com

SPENCER CLAPP
Associate
206.248.7427
spencer.clapp@kidder.com

KIDDER.COM

This information supplied herein is from sources we deem reliable. It is provided without any representation, warranty, or guarantee, expressed or implied as to its accuracy. Prospective Buyer or Tenant should conduct an independent investigation and verification of all matters deemed to be material, including, but not limited to, statements of income and expenses. Consult your attorney, accountant, or other professional advisor.

