



Available

Property Highlights

- 187,211 SF sits on 16.26 acres adjacent to University Park Mall
- Regional Mall located along 80/90 corridor and shopping destination for Northern, IN, portions of Eastern, IL, and Southern, MI
- Visibility to 80/90 Tollway and positioned between the Douglas and Capital exits/interchanges
- Opportunity for Retail, Non Traditional Retail, Entertainment, Office, Residential and Medical Office

Key Retailers



Sears | University Park Mall

6501 Grape Rd
Mishawaka, IN 46545

Blair Austin

317.810.7181

blair.austin@am.jll.com

IN #RB19001369

Janice Sellis

312.702.4283

janice.sellis@am.jll.com

IL #475133718

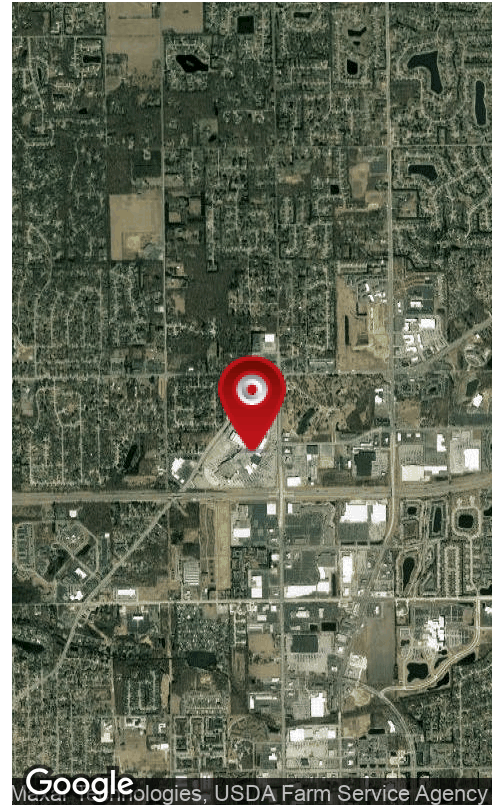
us.jll.com/retail





Property Data

# of Levels	2
Parking	Surface
Zoning	C-2





Google

Imagery ©2020 , IndianaMap Framework Data, Maxar Technologies, NOAA, USDA Farm Service Agency