

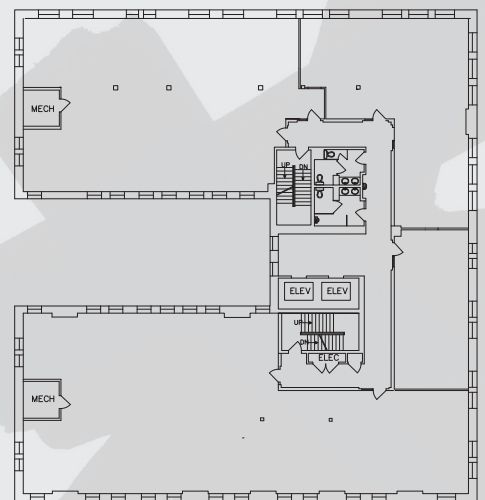


OFFICE SPACE **FOR LEASE**

Broderick Building

Welcome to Seattle's original office building, located in the city's long-storied Pioneer Square, which is now home to a thriving collection of galleries, cafes, buzzing restaurants, local boutiques and creative tech talent.

615 2nd Avenue | Seattle, WA 98104



REPRESENTATIVE FLOOR PLAN (10,500 SF)



BUILDING FEATURES

ORIGINAL SEATTLE

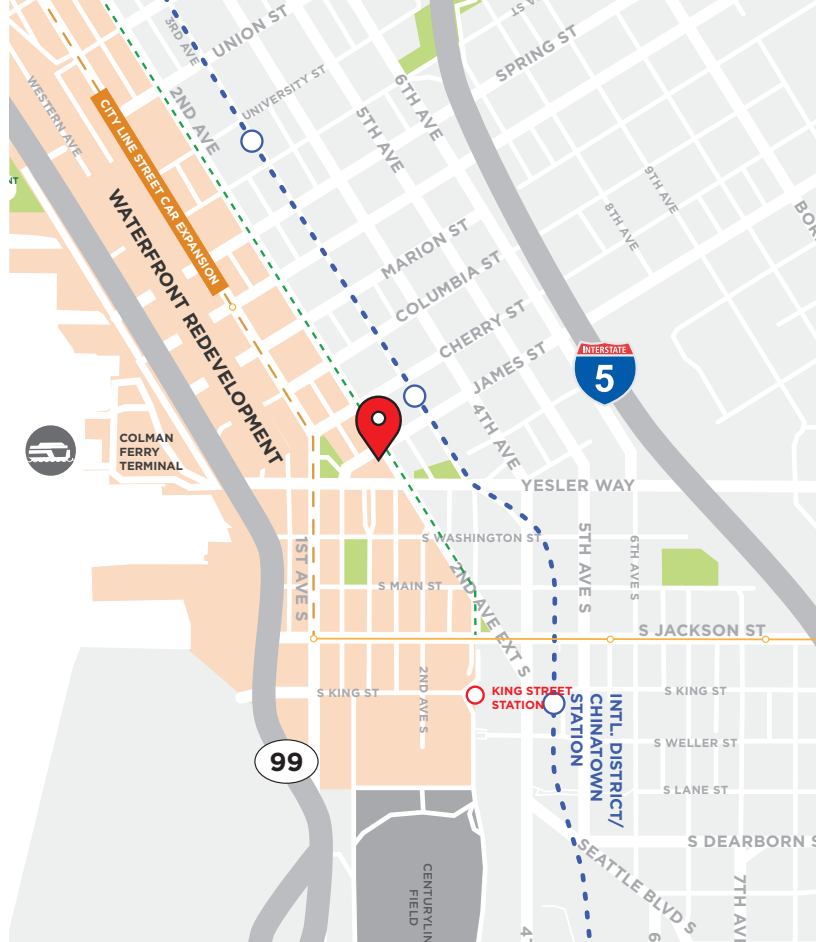
Built in 1889, the Broderick Building is one of the best examples of the stone masonry construction that old Seattle is now revered for. The statuesque sandstone structure has been well-preserved to host a modern wave of industry pioneers to the neighborhood.

- + Enclosed 6-story exposed brick and glass atrium
- + Conference room
- + Bike storage and shower

PIONEER SQUARE: SINCE 1852

Located in the heart of historic Pioneer Square, Seattle's "Original Neighborhood"

- + Short walking distance to popular dining spots, including Cherry Street Coffee House, Top Pot Donuts, Hole in the Wall BBQ and The Metropolitan Grill
- + Close to the retail core, International District, CenturyLink Field and Safeco Field
- + Easy access to public transportation: walk to the Pioneer Square + King Street transit stations, the Colman ferry terminal and future First Ave. streetcar
- + Multiple nearby parking options



CONTACT

Tim Jones
+1 206 971 7011
tim.jones@am.jll.com

Kathryn Pope
+1 206 607 1720
kathryn.pope@am.jll.com

Connor Raffety
+1 206 437 1006
connor.raffety@am.jll.com

