



127K ADT '19

German Cemetery

Evanston Academy

Purcell Marian Catholic High School

Saint Frances De Sales School

27K ADT '19

The Seven Hills School

SITE

Paramount Square

Frederick Douglass Elementary School

22K ADT '19

WILLIAM HOWARD TAFT RD

100K ADT '19

Trevarren Flats

Saint Ursula Academy

25K ADT '19

100K ADT '19

13K ADT '19

71

Anthony J. Palazzolo
 anthony@onsiteretailgroup.com
 513.924.5266

Joshua M. Rothstein
 josh@onsiteretailgroup.com
 513.268.4453

DESALES PLAZA

2841 Woodburn Avenue, E. Walnut Hills, OH 45206



The information herein is produced using data from private and government sources deemed to be reliable and is provided without representation or warranty. Logos are for identification purposes only and may be trademarks of their respective companies. © 2020 OnSite Retail Group, LLC All Rights Reserved.



Anthony J. Palazzolo
 anthony@onsiteretailgroup.com
 513.924.5266
Joshua M. Rothstein
 josh@onsiteretailgroup.com
 513.268.4453

DESALES PLAZA

2841 Woodburn Avenue, E. Walnut Hills, OH 45206



The information herein is produced using data from private and government sources deemed to be reliable and is provided without representation or warranty. Logos are for identification purposes only and may be trademarks of their respective companies. © 2020 OnSite Retail Group, LLC All Rights Reserved.



Purcell Marian Catholic High School

Hyde Park
1.0 miles

2,725 SF AVAILABLE

SITE

Suzie Wong's Cafe De Sales

Branch

It's About Hair

ARGES

WOODBURN BREWERY TAPROOM

Woodburn Parking Lot

OTR/Downtown
3.0 miles

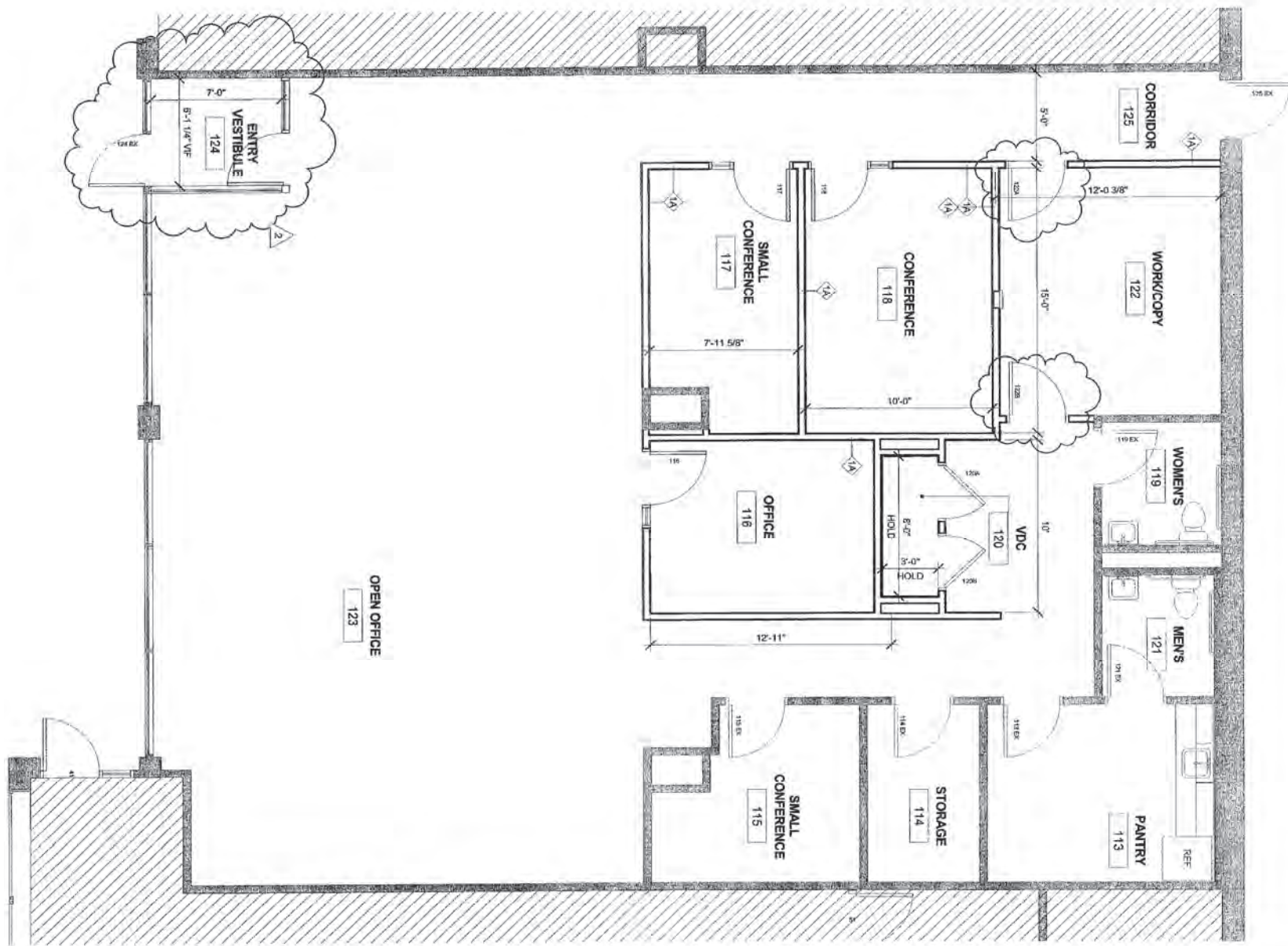
Anthony J. Palazzolo
anthony@onsiteretailgroup.com
513.924.5266

Joshua M. Rothstein
josh@onsiteretailgroup.com
513.268.4453

DESALES PLAZA

2841 Woodburn Avenue, E. Walnut Hills, OH 45206



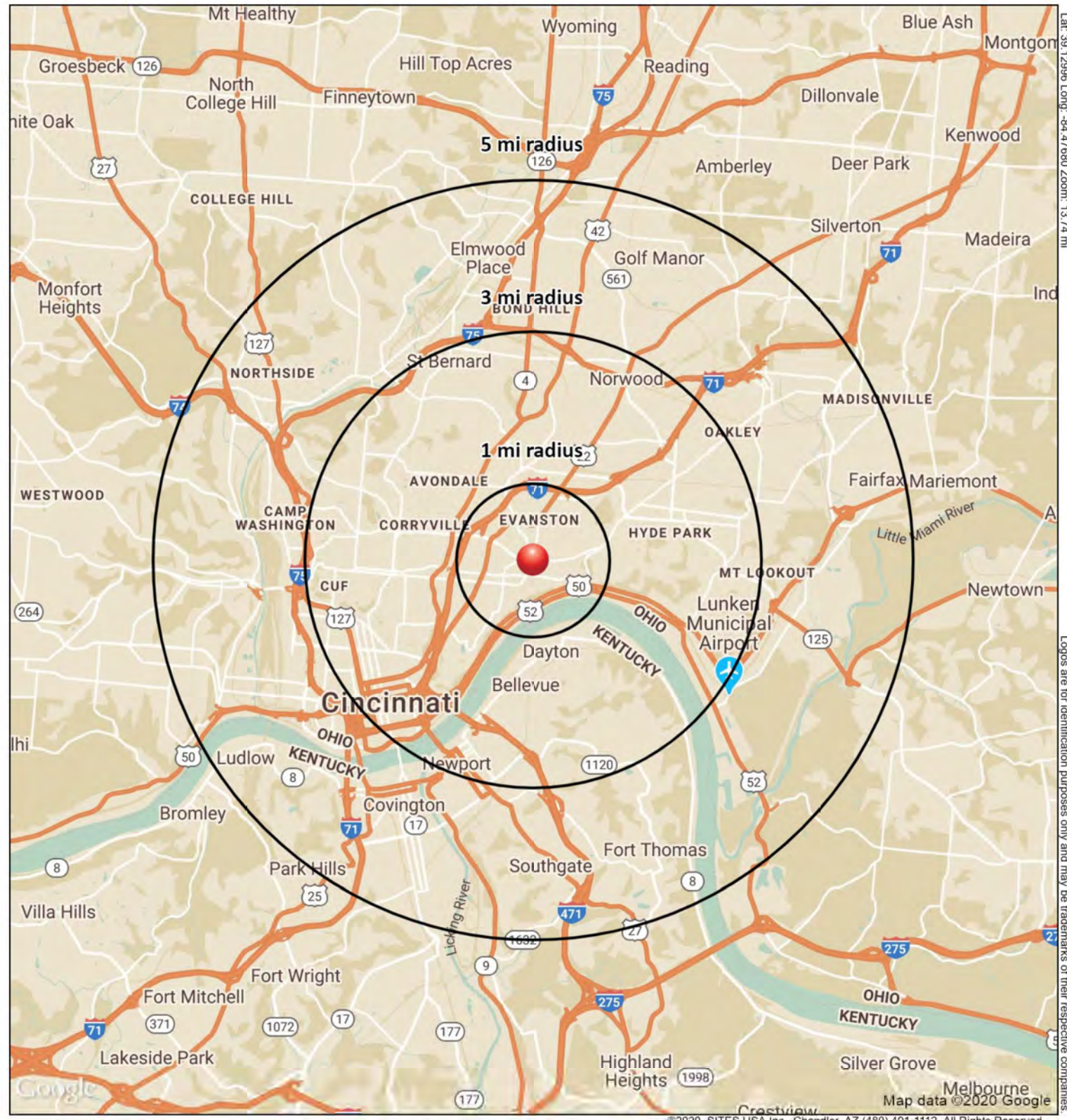


Anthony J. Palazzolo
anthony@onsiteretailgroup.com
513.924.5266
Joshua M. Rothstein
josh@onsiteretailgroup.com
513.268.4453

DESALES PLAZA
2841 Woodburn Avenue, E. Walnut Hills, OH 45206



Lat: 39.12966 Long: -84.47880 Zoom: 13.74 mi



Logos are for identification purposes only and may be trademarks of their respective companies.

2841 Woodburn Ave
Cincinnati, OH 45206

April 2020



This map was produced using data from private and government sources deemed to be reliable. The information herein is provided without representation or warranty

SUMMARY PROFILE

2000-2010 Census, 2019 Estimates with 2024 Projections



Lat/Lon: -84.4768/39.13

RS1

2841 Woodburn Ave

Cincinnati, OH 45206

		1 mi radius	3 mi radius	5 mi radius
POPULATION	2019 Estimated Population	15,291	152,080	296,359
	2024 Projected Population	16,765	159,201	309,087
	2010 Census Population	14,874	144,941	288,875
	2000 Census Population	17,583	159,927	321,070
	Projected Annual Growth 2019 to 2024	1.9%	0.9%	0.9%
	Historical Annual Growth 2000 to 2019	-0.7%	-0.3%	-0.4%
	2019 Median Age	36.4	33.3	34.4
HOUSEHOLDS	2019 Estimated Households	7,899	70,554	137,613
	2024 Projected Households	8,509	73,369	142,446
	2010 Census Households	7,314	64,779	128,719
	2000 Census Households	8,186	71,485	141,470
	Projected Annual Growth 2019 to 2024	1.5%	0.8%	0.7%
	Historical Annual Growth 2000 to 2019	-0.2%	-	-0.1%
RACE AND ETHNICITY	2019 Estimated White	32.5%	60.3%	59.7%
	2019 Estimated Black or African American	62.7%	32.4%	33.2%
	2019 Estimated Asian or Pacific Islander	1.6%	3.6%	2.6%
	2019 Estimated American Indian or Native Alaskan	0.2%	0.2%	0.3%
	2019 Estimated Other Races	3.0%	3.5%	4.2%
	2019 Estimated Hispanic	2.2%	3.3%	3.8%
INCOME	2019 Estimated Average Household Income	\$78,555	\$78,990	\$71,652
	2019 Estimated Median Household Income	\$44,454	\$54,483	\$51,588
	2019 Estimated Per Capita Income	\$40,809	\$37,337	\$33,752
EDUCATION (AGE 25+)	2019 Estimated Elementary (Grade Level 0 to 8)	2.7%	2.7%	3.4%
	2019 Estimated Some High School (Grade Level 9 to 11)	9.6%	7.3%	8.3%
	2019 Estimated High School Graduate	22.5%	21.5%	24.0%
	2019 Estimated Some College	21.0%	17.4%	18.7%
	2019 Estimated Associates Degree Only	6.6%	6.2%	7.0%
	2019 Estimated Bachelors Degree Only	21.6%	25.1%	22.3%
	2019 Estimated Graduate Degree	16.0%	19.9%	16.3%
BUSINESS	2019 Estimated Total Businesses	729	11,646	18,691
	2019 Estimated Total Employees	6,917	231,205	333,104
	2019 Estimated Employee Population per Business	9.5	19.9	17.8
	2019 Estimated Residential Population per Business	21.0	13.1	15.9

This report was produced using data from private and government sources deemed to be reliable. The information herein is provided without representation or warranty.