



**new listing**



**RETAIL/OFFICE/MEDICAL FOR LEASE IN MALIBU-STEPS FROM THE SAND**

*SWC of Malibu Road and Webb Way*

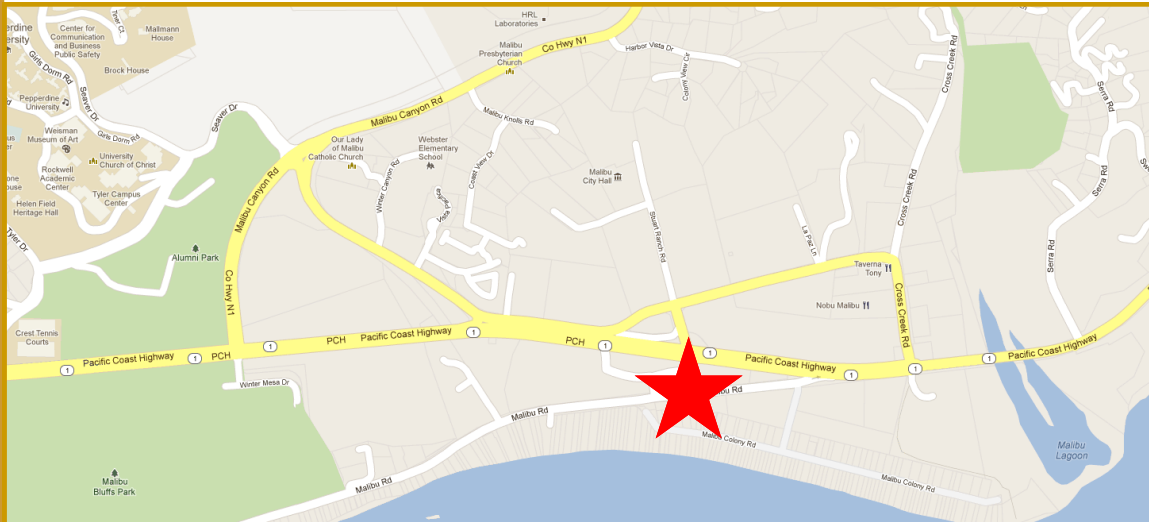
**FEATURES**

- 2 Units Available—1,500 & 750 SF
- Suitable for Retail/Office/Medical
- Ample Parking
- Easy Access to PCH

**AREA AMENITIES**

- Prime Malibu Location, at the Entrance to Malibu Colony
- Strong Retail Trade Area, Surrounded by Countless National Retailers
- Outstanding Demographics
- HH Income—\$183k+ within 1 mile

**23700-12 Malibu Road  
Malibu, CA 90265**



**CONTACT...**

**Jason Ehrenpreis**  
CA Real Estate Lic # 01741961  
**Leasing Agent**  
(310) 575-1517 x213  
(310) 575-1147 Fax

**via e-mail**  
[Jason@cbm1.com](mailto:Jason@cbm1.com)

1517 S. Sepulveda Blvd.  
Los Angeles, CA 90025  
**Los Angeles**  
**Encino**  
**Orange County**  
**San Diego**

# Additional Photos



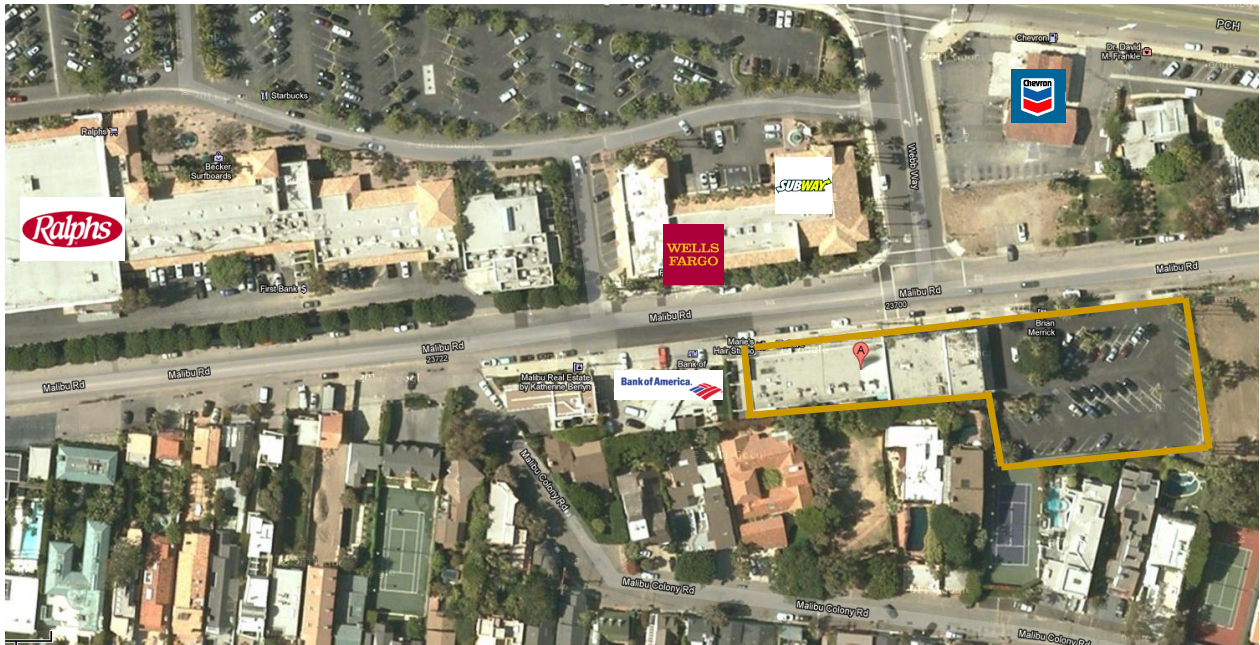
CBM makes no warranties or guarantees about the information provided herein. We have obtained the information from sources we consider credible, however, it has not been verified. The information contained herein is subject to errors and omissions and is subject to change without notice. Any and all projections, opinions, assumptions, and estimates provided are for purposes of example and may not represent actual performance of this property.

# Additional Photos



CBM makes no warranties or guarantees about the information provided herein. We have obtained the information from sources we consider credible, however, it has not been verified. The information contained herein is subject to errors and omissions and is subject to change without notice. Any and all projections, opinions, assumptions, and estimates provided are for purposes of example and may not represent actual performance of this property.

# Aerial Photo



CBM makes no warranties or guarantees about the information provided herein. We have obtained the information from sources we consider credible, however, it has not been verified. The information contained herein is subject to errors and omissions and is subject to change without notice. Any and all projections, opinions, assumptions, and estimates provided are for purposes of example and may not represent actual performance of this property.

# Demographics

	1 mile(s)	3 mile(s)	5 mile(s)
<b>Population: 2015B</b>			
Total Population	987	5,846	10,720
Female Population	50.30%	52.66%	50.82%
Male Population	49.70%	47.34%	49.18%
Population Density	314	207	136
Population Median Age	47.0	26.1	40.3
Employed Civilian Population 16+	456	2,922	5,278
% White Collar	83.5%	83.9%	82.3%
% Blue Collar	16.5%	16.1%	17.7%
Total Employees	2,145	5,409	7,458
Total Establishments*	278	633	914
Population Growth 2000-2010	5.32%	9.22%	1.80%
Population Growth 2015B-2020	3.61%	2.29%	0.85%
<b>Income: 2015B</b>			
Average Household Income	\$183,041	\$182,719	\$181,856
Median Household Income	\$103,078	\$108,365	\$115,386
Per Capita Income	\$83,587	\$56,042	\$66,716
Avg Income Growth 2000-2010	-13.02%	-11.55%	5.47%
Avg Income Growth 2015B-2020	17.32%	16.58%	15.93%
<b>Households: 2015B</b>			
Households	440	1,630	3,701
Average Household Size	2.18	2.24	2.28
Hhld Growth 2000-2010	2.41%	1.78%	-4.34%
Hhld Growth 2015B-2020	3.95%	3.21%	0.81%
<b>Housing Units: 2015B</b>			
Occupied Units	440	1,630	3,701
% Occupied Units	74.51%	77.10%	81.37%
% Vacant Housing Units	25.49%	22.90%	18.63%
Owner Occ Housing Growth 2000-2010	5.09%	3.94%	-3.28%
Owner Occ Housing Growth 2000-2020	10.09%	7.61%	-0.90%
Owner Occ Housing Growth 2015B-2020	2.98%	2.16%	0.03%
Occ Housing Growth 2000-2010	2.41%	1.78%	-4.34%
Occ Housing Growth 2010-2020	10.67%	9.47%	6.84%
Occ Housing Growth 2015B-2020	3.95%	3.21%	0.81%
<b>Race and Ethnicity: 2015B</b>			
% American Indian or Alaska Native Population	0.30%	0.29%	0.29%
% Asian Population	4.09%	7.26%	5.76%
% Black Population	1.42%	2.93%	2.32%
% Hawaiian or Pacific Islander Population	0.22%	0.17%	0.13%
% Multirace Population	2.79%	4.67%	4.07%
% Other Race Population	1.62%	2.16%	2.01%
% White Population	89.56%	82.52%	85.42%
% Hispanic Population	6.46%	8.55%	7.96%
% Non Hispanic Population	93.54%	91.45%	92.04%
<b>Seasonal Population Trending</b>			
Q2 2013	287	1,026	1,665
Q3 2013	291	1,035	1,681
Q4 2013	291	1,035	1,682
Q1 2014	283	1,016	1,642
Q2 2014	286	1,022	1,657
Q3 2014	314	1,101	1,781
Q4 2014	310	1,090	1,768
Q1 2015	315	1,102	1,797
Q2 2015	315	1,103	1,803

CBM makes no warranties or guarantees about the information provided herein. We have obtained the information from sources we consider credible, however, it has not been verified. The information contained herein is subject to errors and omissions and is subject to change without notice. Any and all projections, opinions, assumptions, and estimates provided are for purposes of example and may not represent actual performance of this property.