

# Century Plaza

1065 E HILLSDALE BLVD | FOSTER CITY



 DIVCO WEST



Newmark  
Knight Frank

**DAN MATTEUCCI**

650.358.5276  
dmatteucci@ngkf.com  
CA RE License #01848064

**MARK COURSON**

650.358.5272  
mtcourson@ngkf.com  
CA RE License #01704280

**JOSH ROWELL**

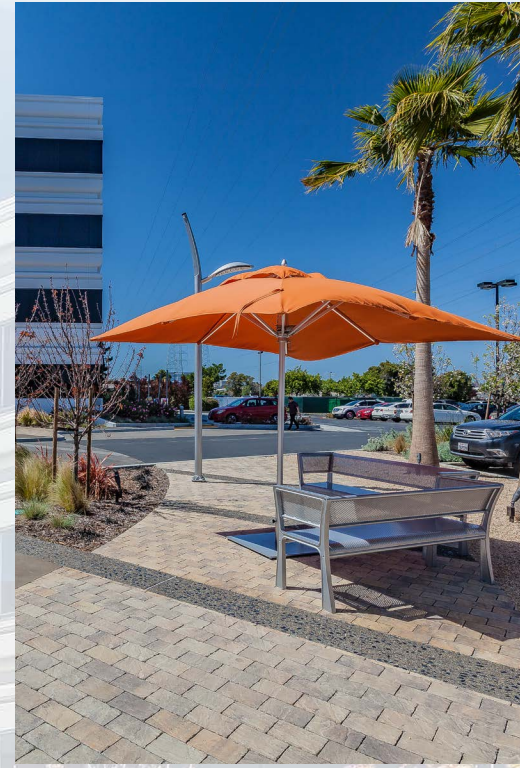
650.358.5261  
jrowell@ngkf.com  
CA RE License #01236434



# PROJECT HIGHLIGHTS

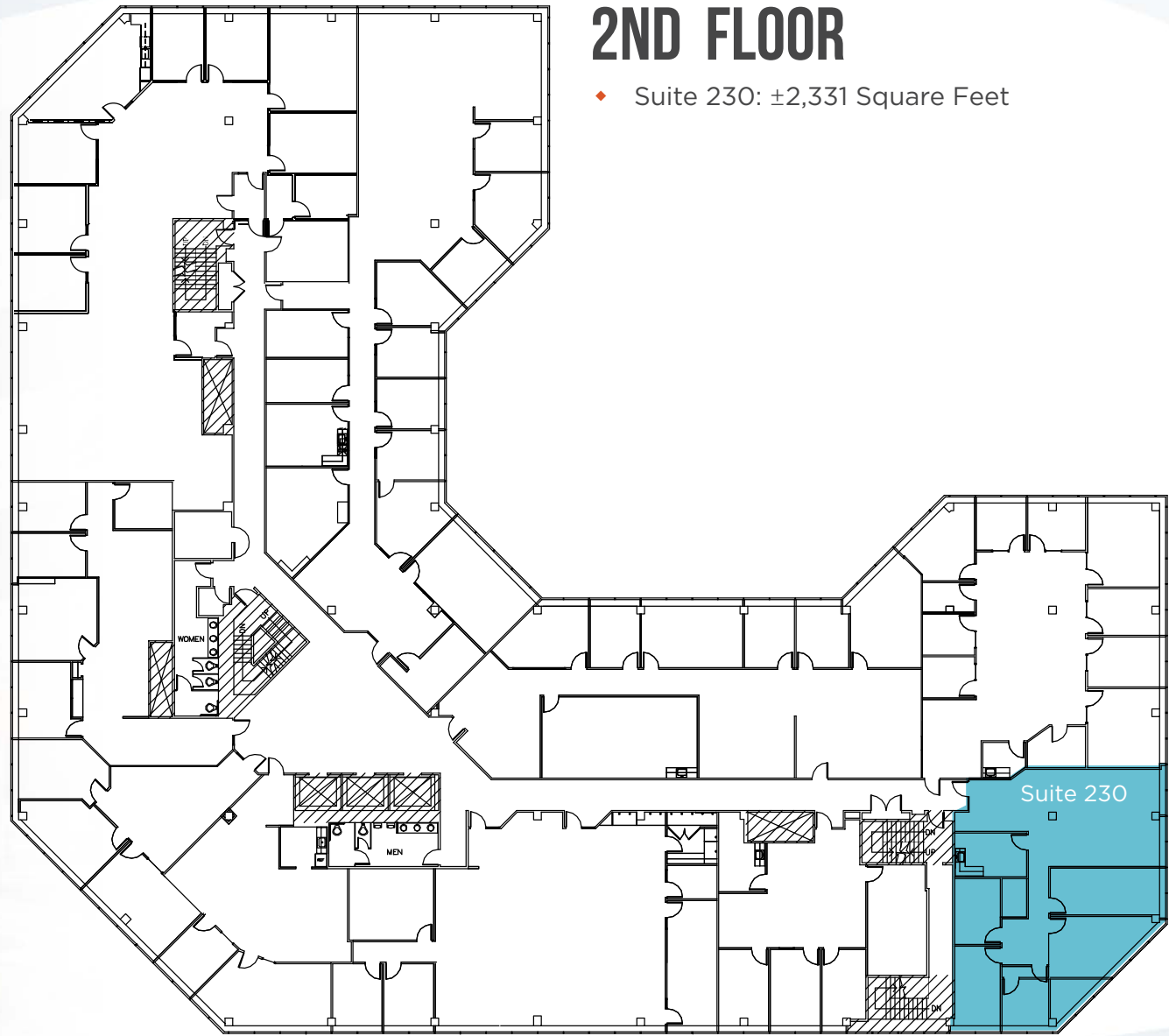
±1,508 - ±7,885  
Square Foot Spaces Available

- ◆ Recently Renovated Class A Office Building
- ◆ On-Site Management, Maintenance and Janitorial
- ◆ 3.15/1000 Parking Ratio
- ◆ Multiple Amenities Within Walking Distance
- ◆ Updated Lobby and Signage
- ◆ Completely Updated Common Area Corridors
- ◆ Brand New First Floor Spec Suite with Private Patio
- ◆ Updates to Exterior Plaza and Building Entry
- ◆ New Landscaping and Outdoor Seating



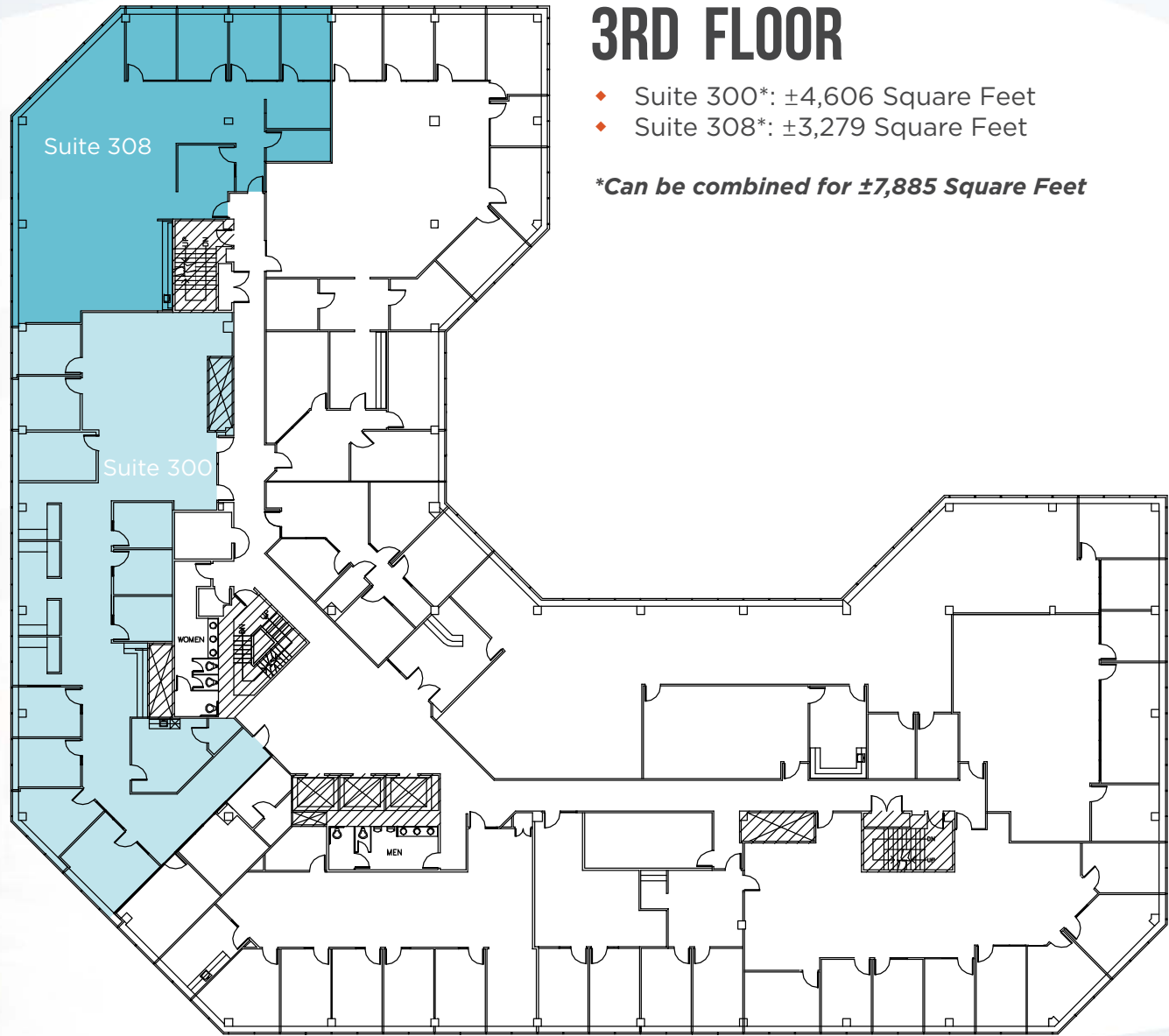






## 2ND FLOOR

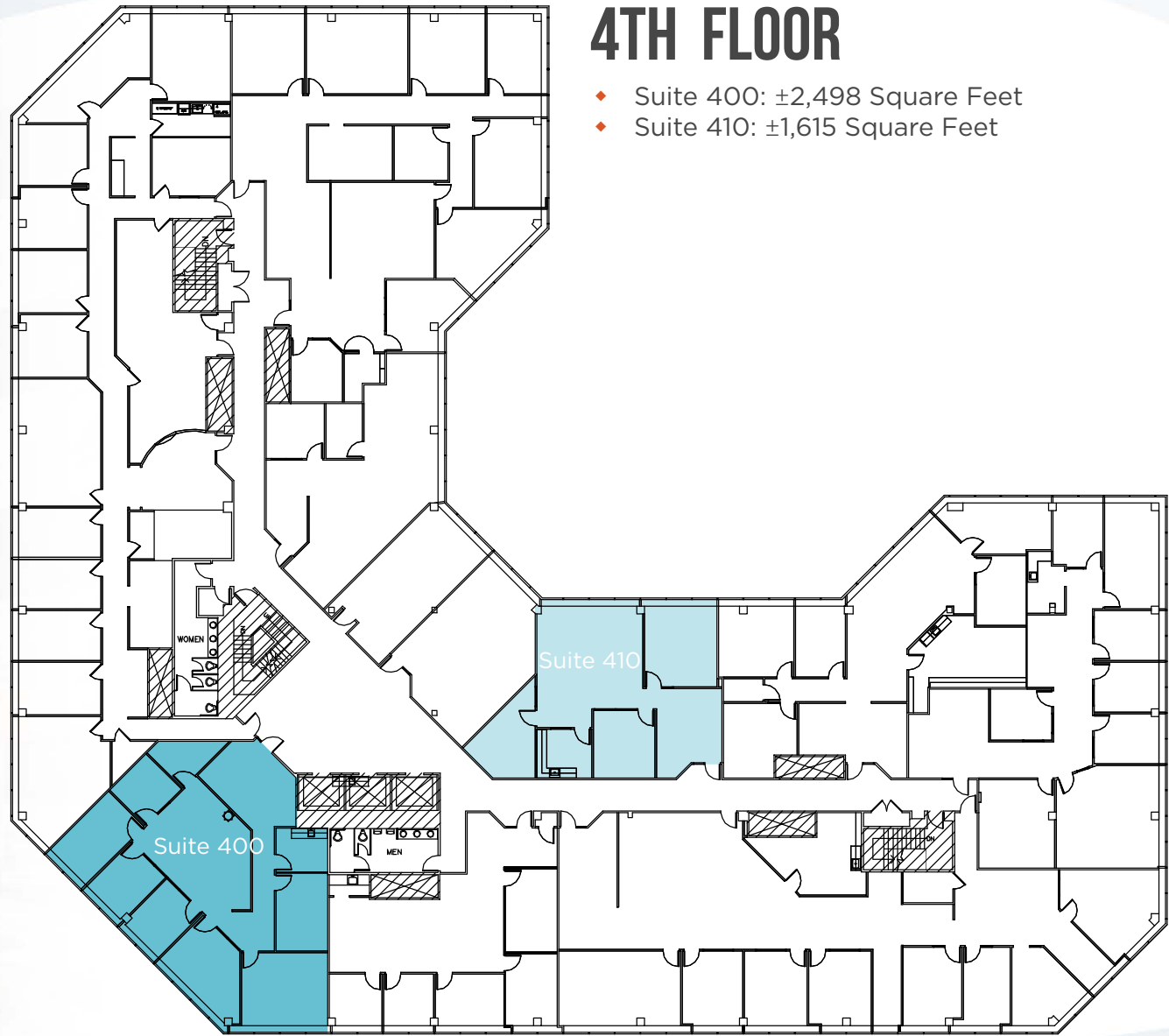
◆ Suite 230: ±2,331 Square Feet



## 3RD FLOOR

- ◆ Suite 300\*: ±4,606 Square Feet
- ◆ Suite 308\*: ±3,279 Square Feet

*\*Can be combined for ±7,885 Square Feet*

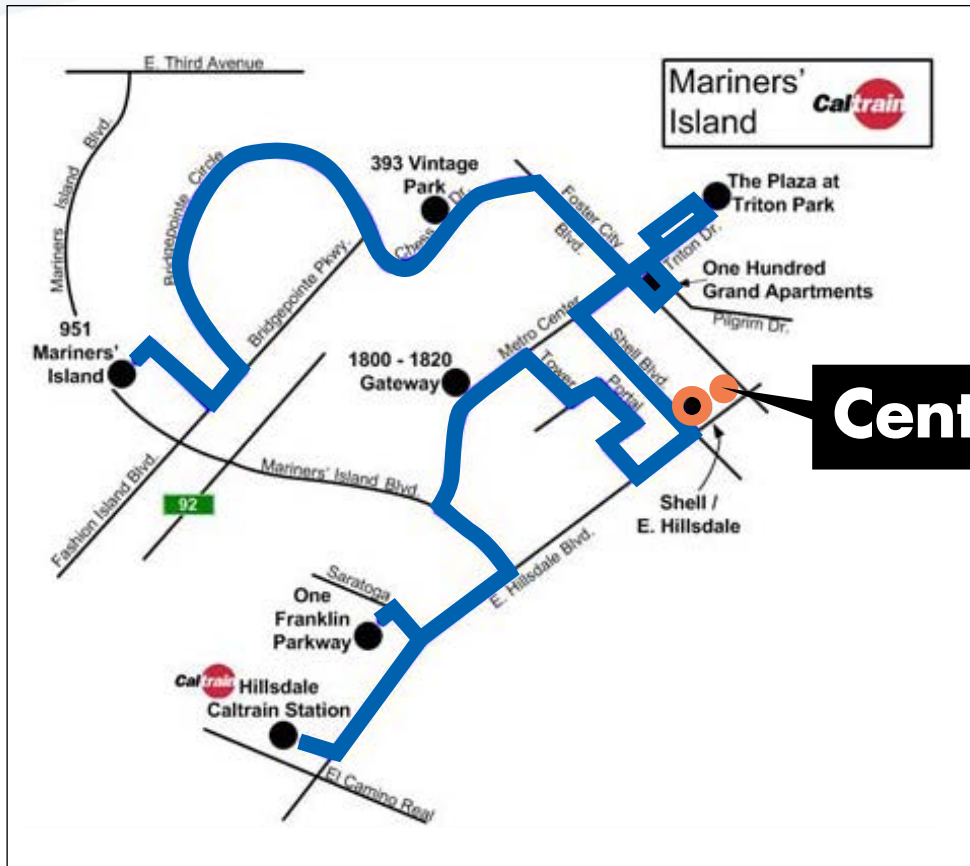


## 4TH FLOOR

- ◆ Suite 400: ±2,498 Square Feet
- ◆ Suite 410: ±1,615 Square Feet



# CALTRAIN SHUTTLE SCHEDULE



**CenturyPlaza**

## am

Northbound Caltrain No.	207	215	323	231	233
Arrives Hillsdale Station	6:54	7:34	8:23	9:09	9:31
Southbound Caltrain No.	208	216	324	232	134
Arrives Hillsdale Station	6:54	7:35	8:24	9:13	9:39

### AM SHUTTLE

Departs Hillsdale Station	7:00	7:43	8:29	9:18	10:01
Shell/E. Hillsdale	7:18	8:01	8:47	9:36	10:19

## pm

### PM SHUTTLE

Shell/E. Hillsdale	3:29	4:13	4:57	5:40	6:24
Arrives Hillsdale Station	3:57	4:41	5:25	6:08	6:52

Northbound Caltrain No.	159	263	273	277	287
-------------------------	-----	-----	-----	-----	-----

Departs Hillsdale Station	4:08	4:51	5:47	6:14	7:16
---------------------------	------	------	------	------	------

Southbound Caltrain No.	258	262	370	274	284
-------------------------	-----	-----	-----	-----	-----

Departs Hillsdale Station	4:04	4:50	5:43	6:15	7:15
---------------------------	------	------	------	------	------





**DAN MATTEUCCI**

650.358.5276  
dmatteucci@ngkf.com  
CA RE License #01848064

**MARK COURSON**

650.358.5272  
mtcourson@ngkf.com  
CA RE License #01704280

**JOSH ROWELL**

650.358.5261  
jrowell@ngkf.com  
CA RE License #01236434

The distributor of this communication is performing acts for which a real estate license is required. The information contained herein has been obtained from sources deemed reliable but has not been verified and no guarantee, warranty or representation, either express or implied, is made with respect to such information. Terms of sale or lease and availability are subject to change or withdrawal without notice.

05-1443.08/19

 **DIVCO**WEST

 **Newmark  
Knight Frank**

