

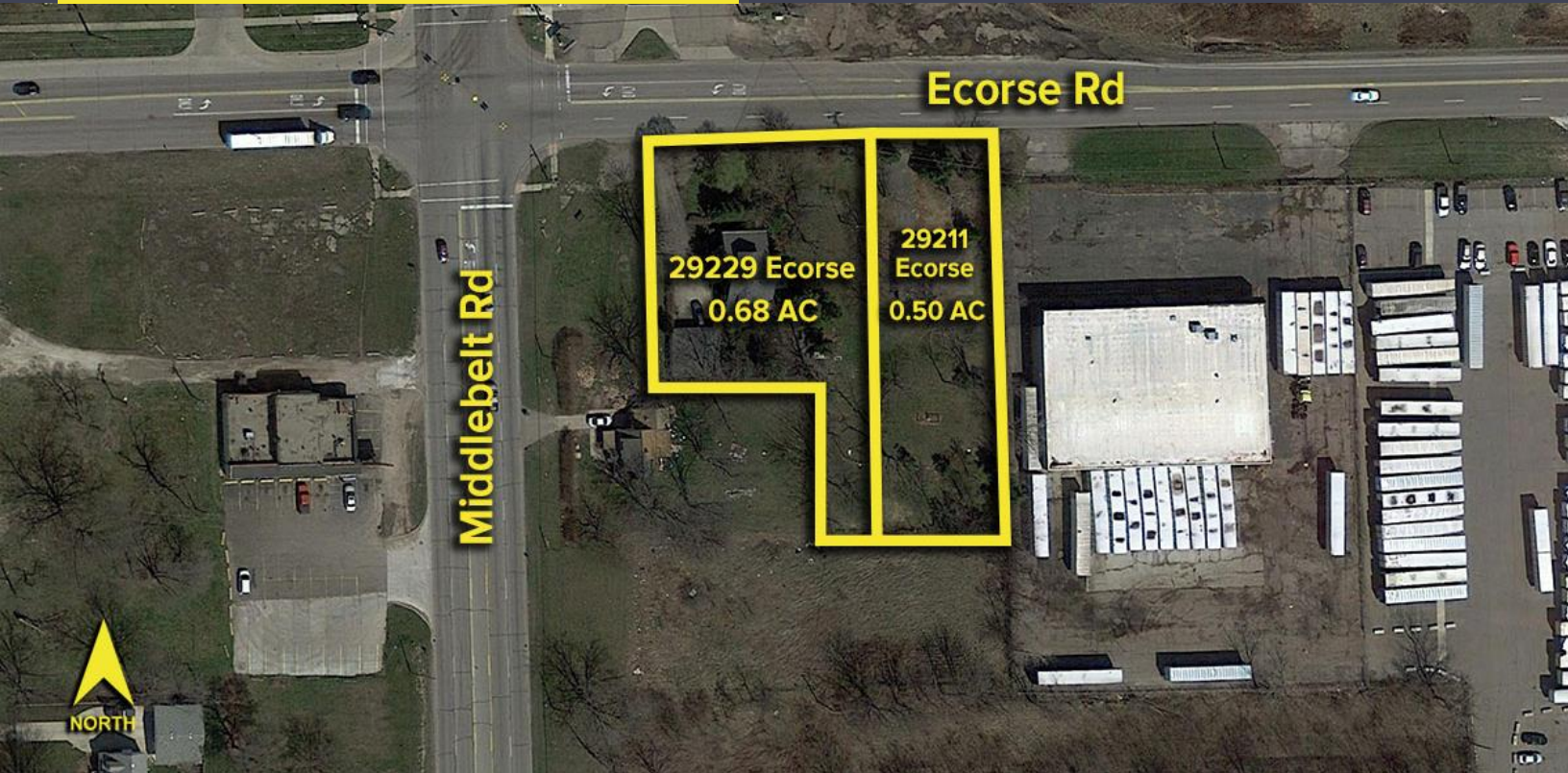
29211 & 29229 ECORSE RD  
ROMULUS, MICHIGAN

VACANT LAND FOR SALE  
1.18 Acres Available



**SIGNATURE  
ASSOCIATES**  
KNOW SIGNATURE | KNOW RESULTS

**REDEVELOPMENT OPPORTUNITY**



## PROPERTY FEATURES

- 29211 Ecorse is 0.50 acres
- 29229 Ecorse is 0.68 acres
- Zoned C-3
- Just off the corner of Middlebelt and Ecorse Rd.
- Property currently has 2 residential homes on the site
- Great redevelopment opportunity near Metro Airport
- Can be purchased together or separately
- Sale Price: \$150,000 (\$127,118.64/acre)



For more information, please contact:

**JUSTIN GAFFREY**  
(248) 799 3143  
jgaffrey@signatureassociates.com

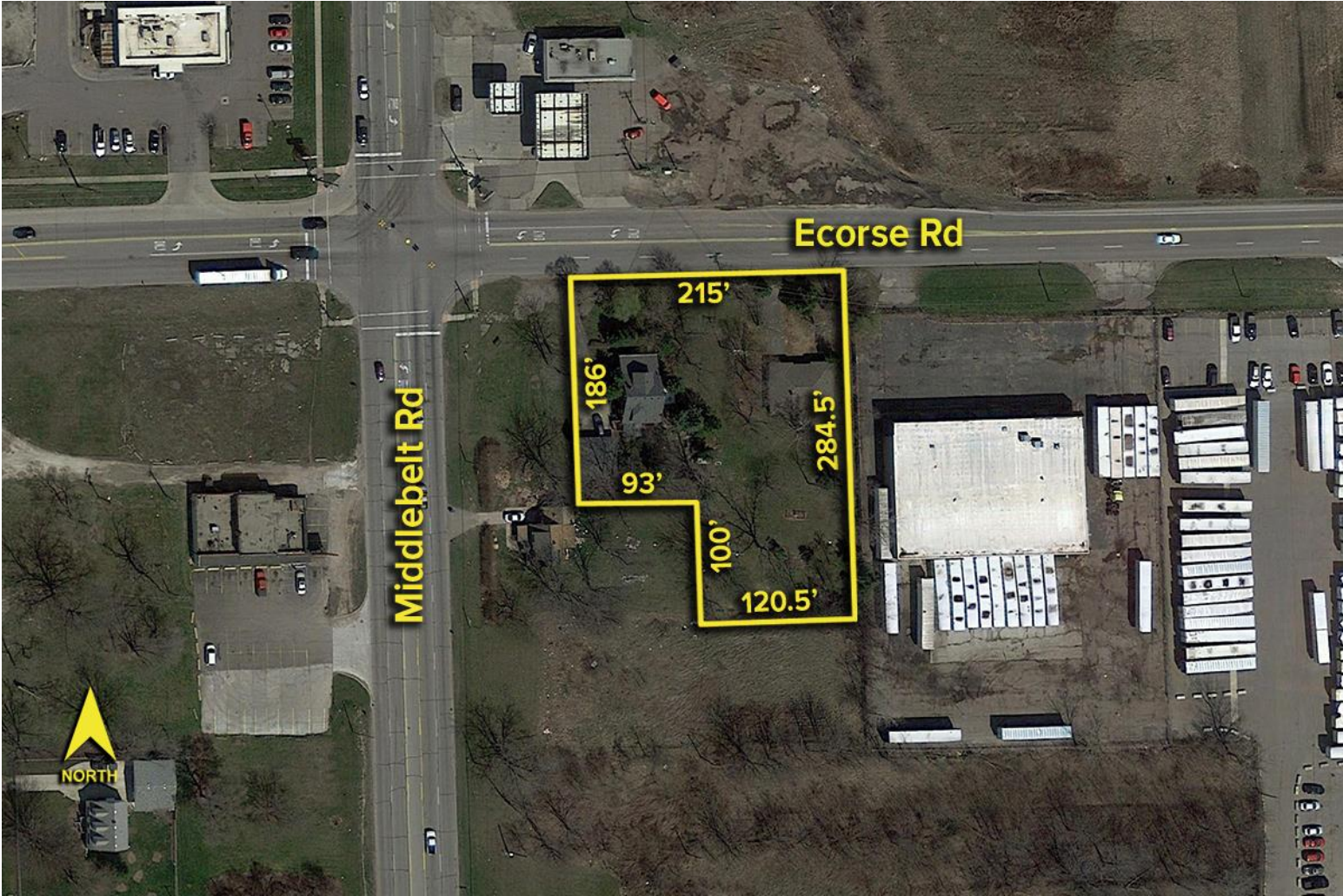
**SIGNATURE ASSOCIATES**  
One Towne Square, Suite 1200  
Southfield, MI 48076  
www.signatureassociates.com

# 29211 & 29229 Ecorse Road - Romulus, Michigan

Land For Sale

0.50 – 1.18  
Acres  
AVAILABLE

## Site Plan



For more information, please contact:  
**JUSTIN GAFFREY**  
(248) 799 3143  
jgaffrey@signatureassociates.com

**SIGNATURE ASSOCIATES**  
One Towne Square, Suite 1200  
Southfield, MI 48076  
www.signatureassociates.com

Information is subject to verification and no liability for errors or omissions is assumed. Price is subject to change and listing withdrawal.