

EAST NASHVILLE

1.15 ACRE RESIDENTIAL LOT

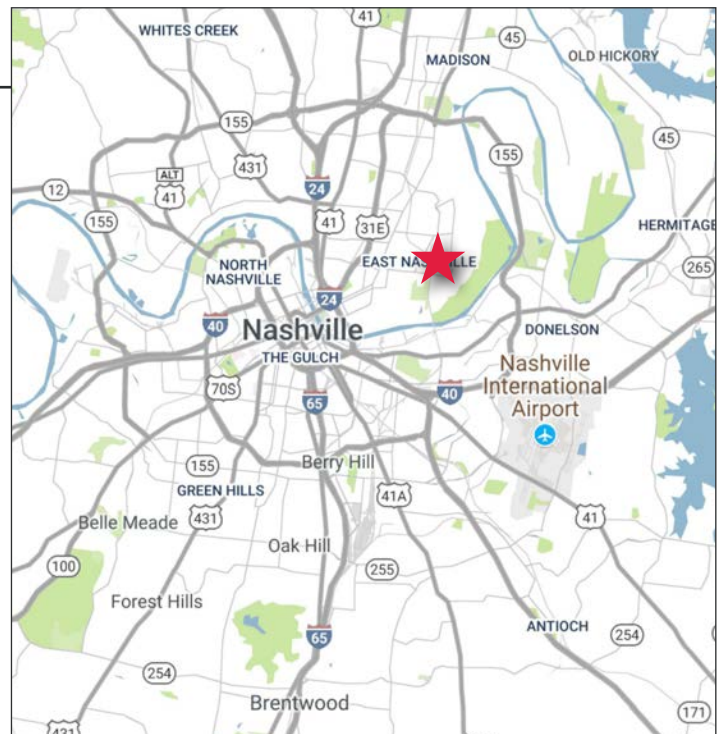
FOR SALE

\$500,000



OVERVIEW

LOCATION	On McKennie Ave., Just Off Porter Road
SUB-MARKET	East Nashville
ZONING	R6 - Single Family Residential 6,000 SF Lot
SIZE	1.15 Acres
LIST PRICE	\$700,000



ADDITIONAL NOTES

- Surrounded by Single Family Residential
- Ideally Located, New Development in all Directions
- Property Owned by CSX
- Property Consists of 3 Total Parcels

FOR MORE INFORMATION, CONTACT



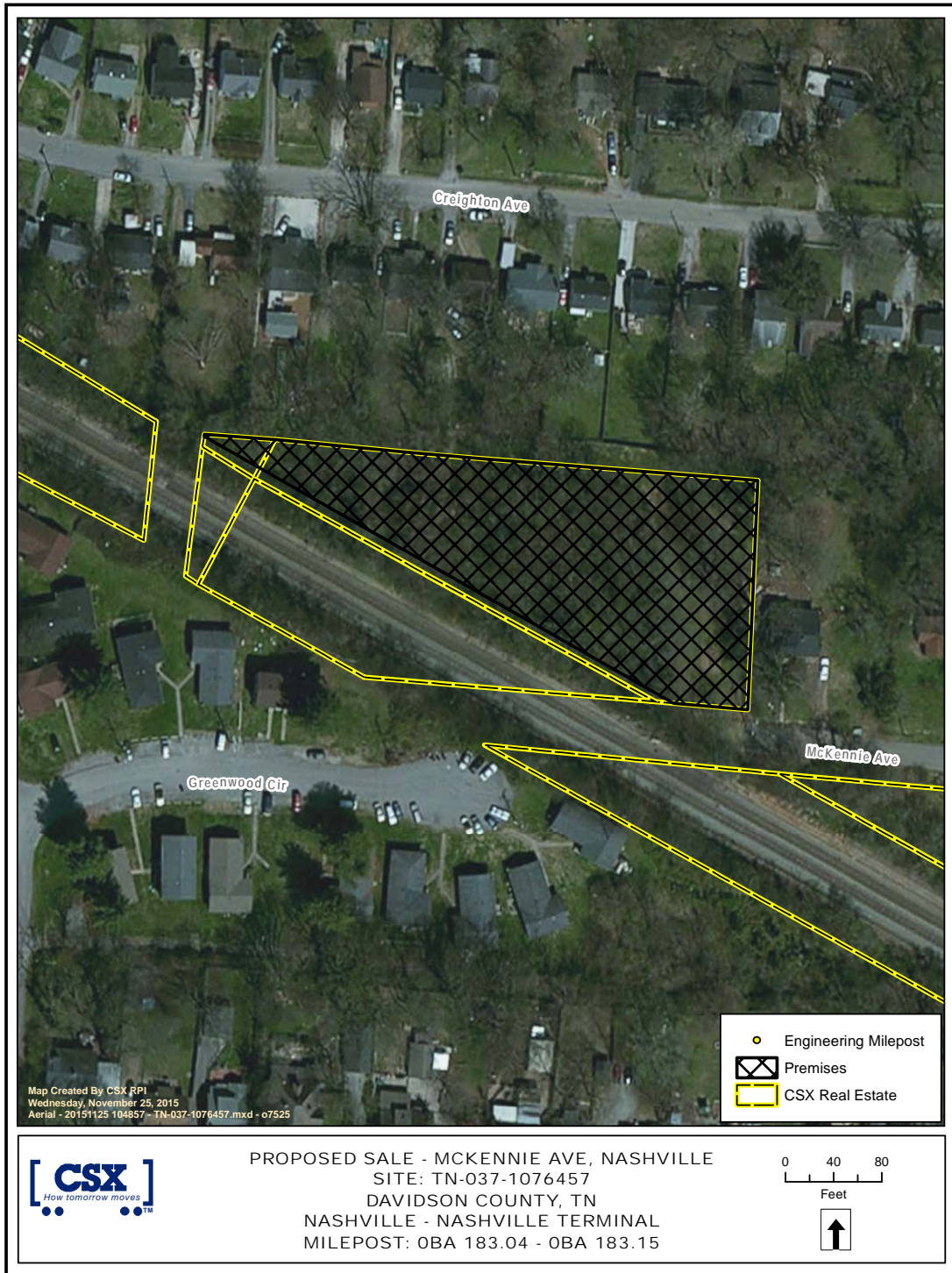
Please contact Stephen Crawford for all inquiries and to receive CSX's form-based contract for offer submittal.

STEPHEN CRAWFORD

615.250.8680

scrawford@southeastventure.com

SITE A AERIAL - 1.15 ACRES



FOR MORE INFORMATION, CONTACT



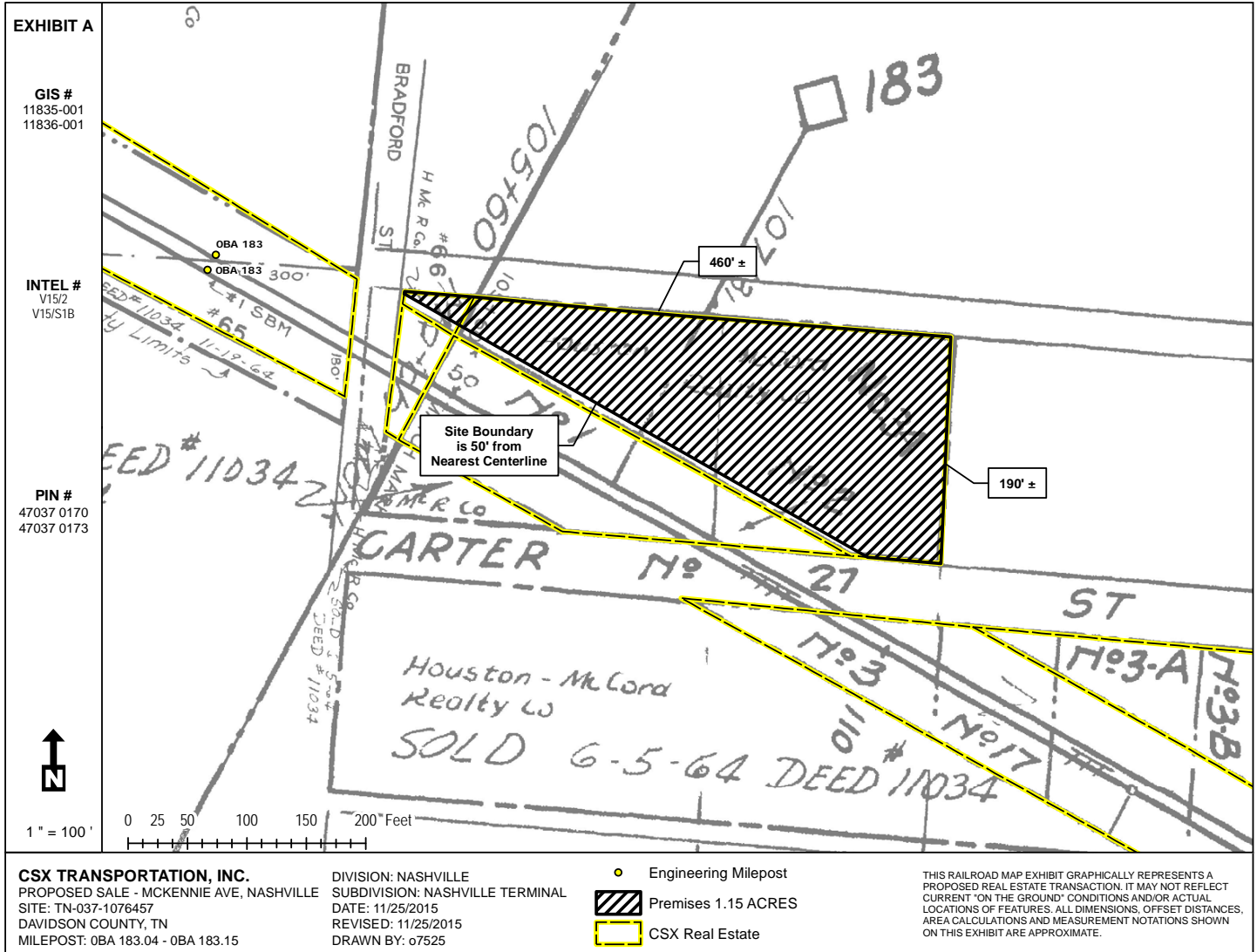
Please contact Stephen Crawford for all inquiries and to receive CSX's form-based contract for offer submittal.

STEPHEN CRAWFORD

615.250.8680

scrawford@southeastventure.com

SITE A EXHIBIT - 1.15 ACRES



FOR MORE INFORMATION, CONTACT



Please contact Stephen Crawford for all inquiries and to receive CSX's form-based contract for offer submittal.

STEPHEN CRAWFORD

615.250.8680
scrawford@southeastventure.com