



56 LEONARD

LUXURY TRIBECA RETAIL SPACE FOR LEASE



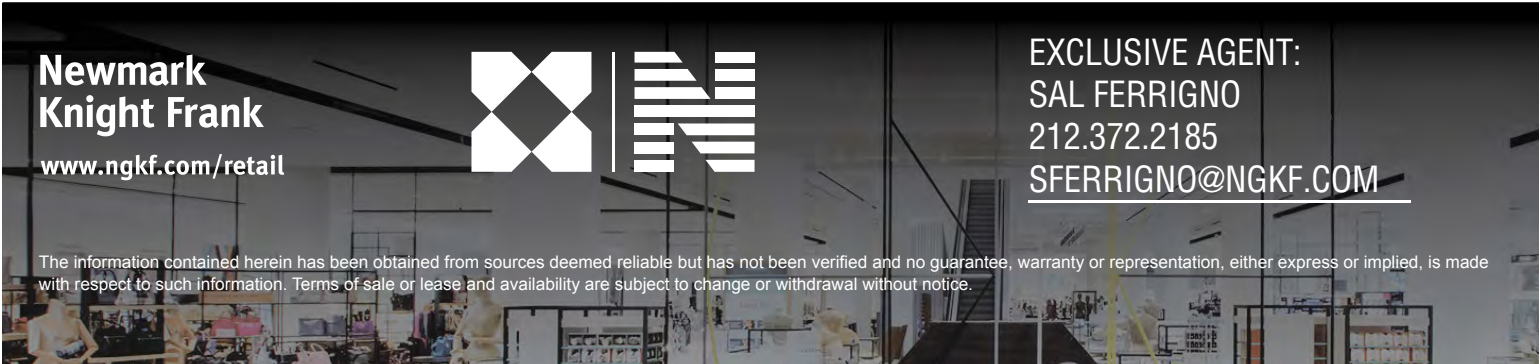
**Newmark
Knight Frank**

www.ngkf.com/retail



EXCLUSIVE AGENT:
SAL FERRIGNO
212.372.2185
SFERRIGNO@NGKF.COM

The information contained herein has been obtained from sources deemed reliable but has not been verified and no guarantee, warranty or representation, either express or implied, is made with respect to such information. Terms of sale or lease and availability are subject to change or withdrawal without notice.



56 LEONARD

SIZE:
1,460 SF GROUND FLOOR
86' OF WRAPAROUND
FRONTAGE
14' CEILING
POSSESSION: IMMEDIATE
ASKING RENT: UPON REQUEST

NEIGHBORS INCLUDE:

Tribeca Grill



The Odeon



TED MUEHLING
ISSEY MIYAKE

TRIBECA GRAND
LOCANDA VERDE

MR CHOW
CALYPSO



Features:

- LOCATED AMONG SOME OF THE FINEST SHOPS AND RESTAURANTS
- TRIBECA APPEALS TO A LOCAL AND GLOBAL AUDIENCE, MAKING IT ONE OF THE MOST DESIRED AND DISTINCTIVE NEIGHBORHOODS IN THE WORLD
- DESIGNED BY THE THE PRITZKER PRIZE-WINNING SWISS ARCHITECTURE FIRM HERZOG & DE MEURON
- A SCULPTURE BY ANISH KAPOOR SITS AT THE BASE OF THE BUILDING

Newmark
Knight Frank
www.ngkf.com/retail



EXCLUSIVE AGENT:
SAL FERRIGNO
212.372.2185
SFERRIGNO@NGKF.COM

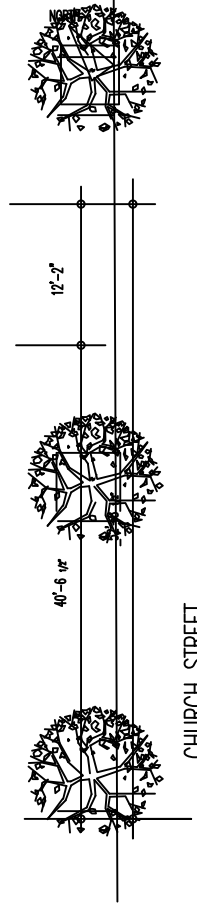
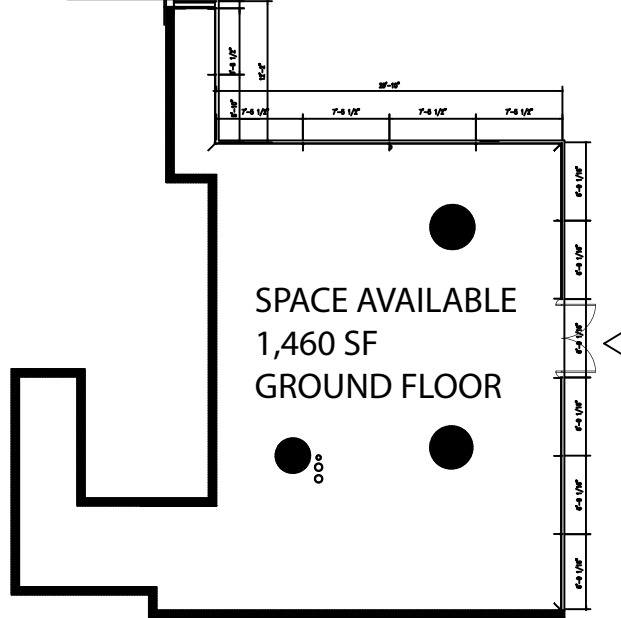
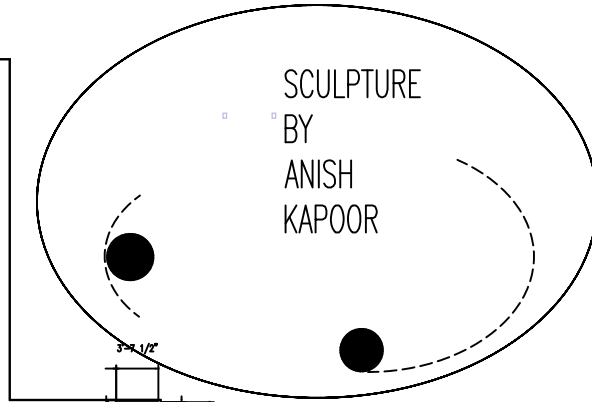


56 LEONARD

LEONARD STREET



BUILDING'S LOBBY



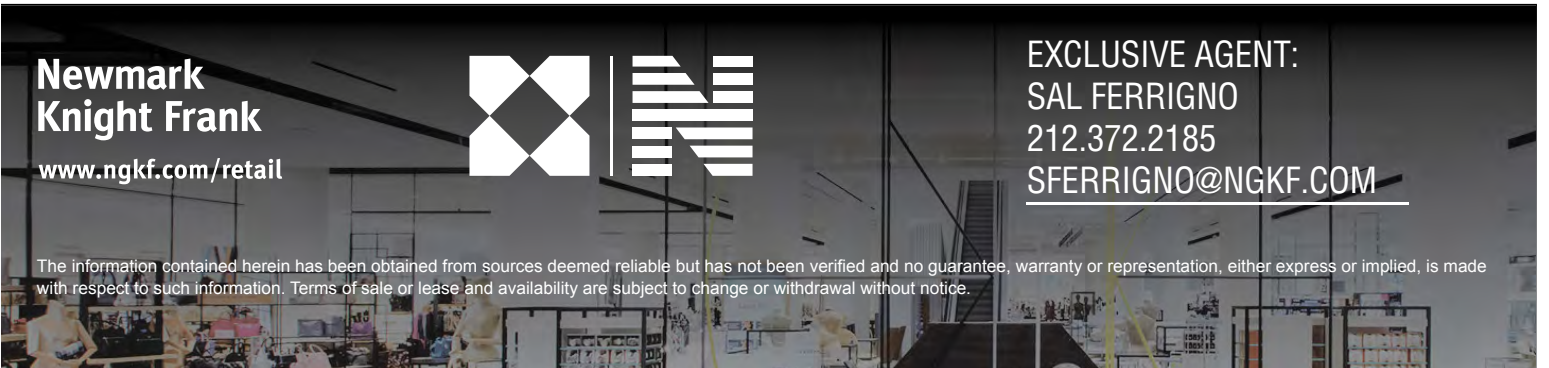
CHURCH STREET

**Newmark
Knight Frank**
www.ngkf.com/retail

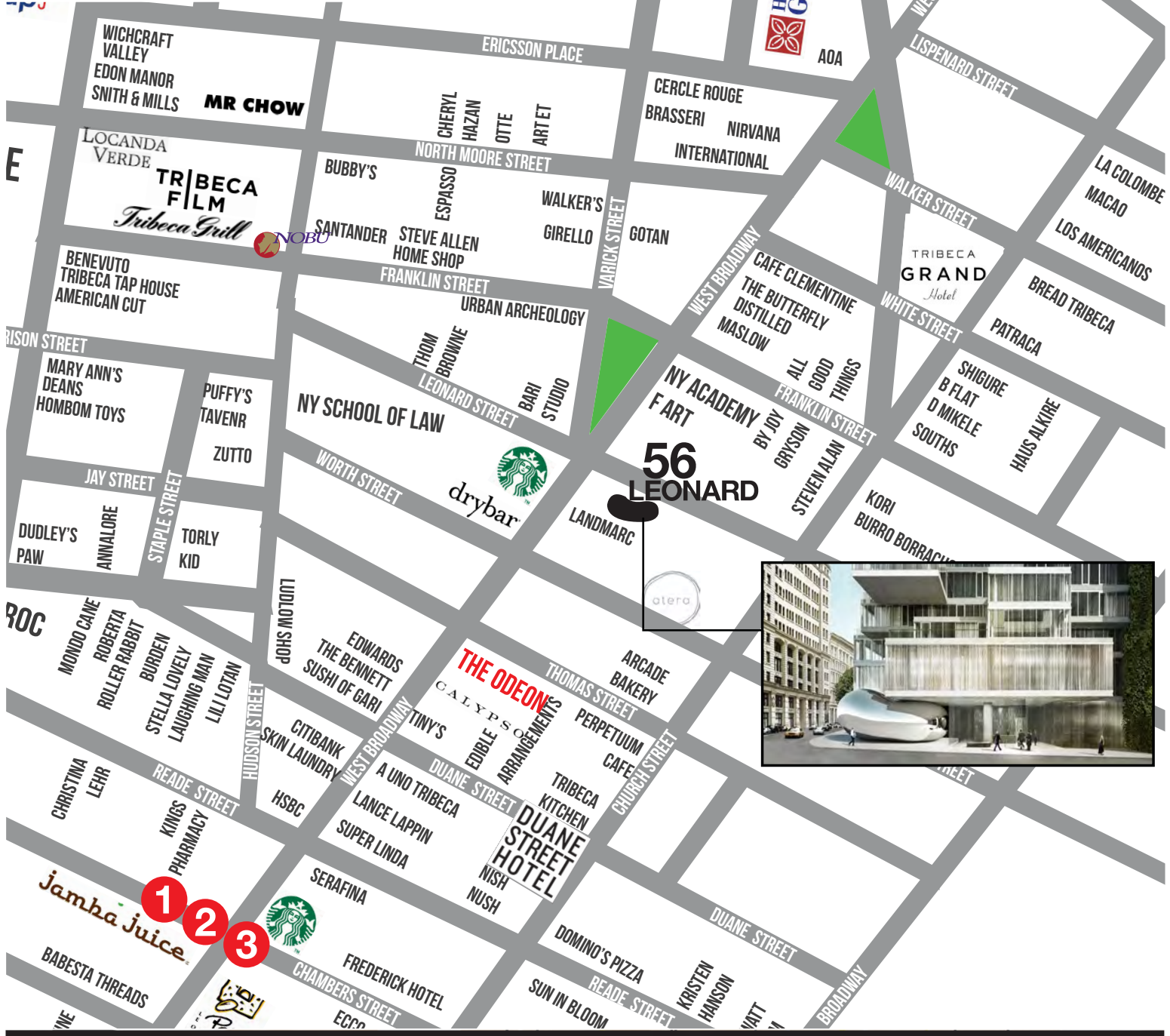


EXCLUSIVE AGENT:
SAL FERRIGNO
212.372.2185
SFERRIGNO@NGKF.COM

The information contained herein has been obtained from sources deemed reliable but has not been verified and no guarantee, warranty or representation, either express or implied, is made with respect to such information. Terms of sale or lease and availability are subject to change or withdrawal without notice.



56 LEONARD



Newmark
Knight Frank

www.ngkf.com/retail



EXCLUSIVE AGENT:
SAL FERRIGNO
212.372.2185
SFERRIGNO@NGKF.COM