

PLUG & PLAY CALL CENTER

# UNION HILLS OFFICE PLAZA

2550

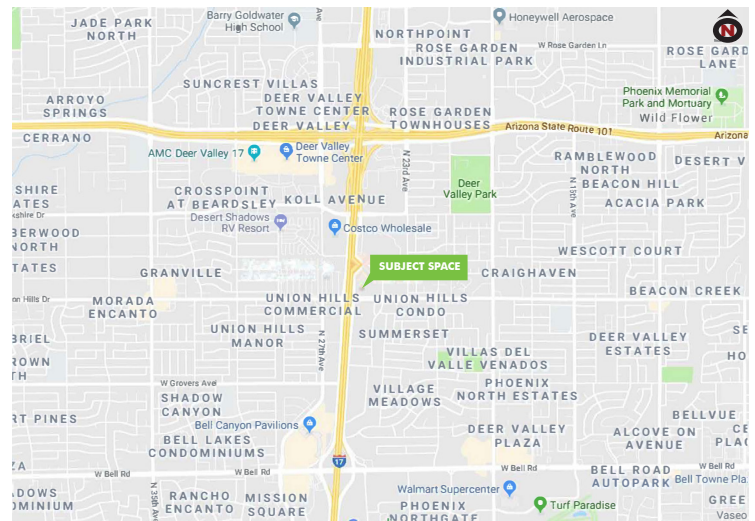
WEST UNION HILLS DRIVE

Phoenix, AZ 85027



## SUBLEASE DETAILS

- + Space Available:  $\pm 10,348$  SF
- + Building SF:  $\pm 143,715$  SF
- + Parking Ratio: 5:1,000
- + Asking Rate: \$24.00 Full Service
- + Lease expires: August 31, 2020
- + Located NEC I-17 & Union Hills Drive



NOT TO SCALE



## CONTACT US

**MICHAEL CONNER**

+1 602 735 5537

michael.conner@cbre.com

**COURTNEY LUEDEMANN**

+1 602 735 5218

courtney.luedemann@cbre.com

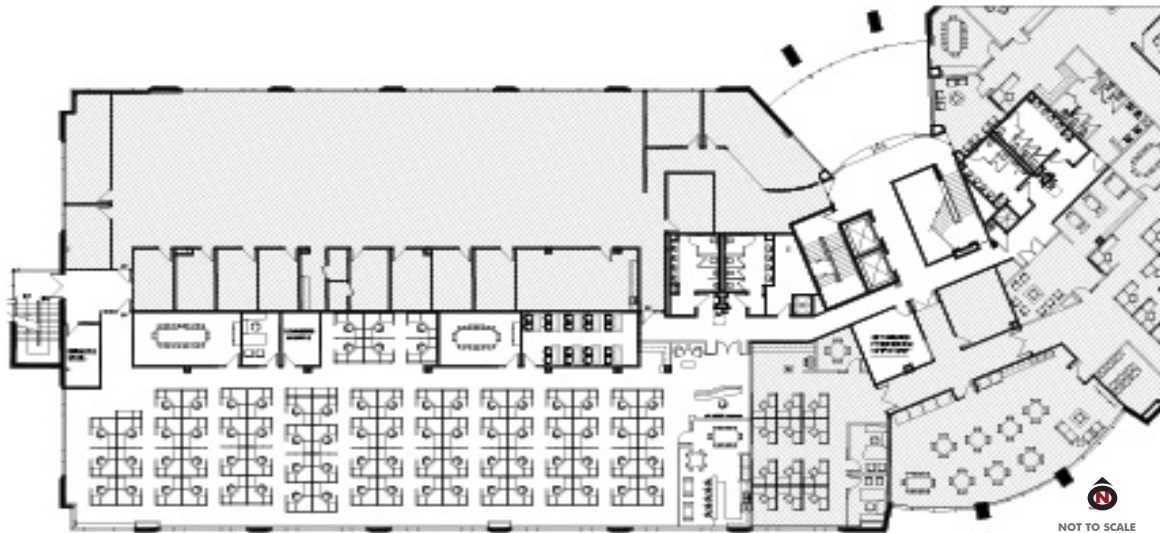
[www.cbre.us/](http://www.cbre.us/)

**CBRE**

# SUBLEASE OPPORTUNITY UNION HILLS OFFICE PLAZA

2550  
W UNION HILLS DR  
Phoenix, AZ 85027

## SPACE PLAN



## EXISTING BUILD-OUT

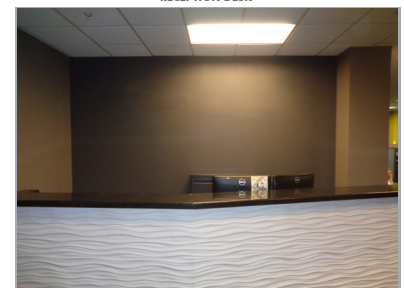
Space Plan	Space Overview
Workstations 6ft x 7ft (existing size)	76 cubes
Offices (9'-8" x 13'-6")	1 Office
Board Room (26'-8" x 13'-4")	1 Board Room
Conference Room (20'-4" x 13'-4")	1 Conference Room
Break Room (22'-7" x 16'-7")	1 Room
Mail Room (NR Receipt) (7'-8" x 5'-8")	1 Room
Storage Room (9'-8" x 13'-6")	1 Room
IT/Server Room (14'-3" x 16'-0")	1 Room

ALL DIMENSIONS ARE APPROXIMATE

BOARDROOM



RECEPTION DESK



TRAINING ROOM



BULL PEN



© 2018 CBRE, Inc. All rights reserved. This information has been obtained from sources believed reliable, but has not been verified for accuracy or completeness. You should conduct a careful, independent investigation of the property and verify all information. Any reliance on this information is solely at your own risk. CBRE and the CBRE logo are service marks of CBRE, Inc. All other marks displayed on this document are the property of their respective owners. Photos herein are the property of their respective owners. Use of these images without the express written consent of the owner is prohibited.