



478 Marathon Way

478 MARATHON WAY, SOUTHAVEN, MS 38671



LISTING PRESENTATION

Keller Williams Realty | KW Commercial

5847 Getwell Road Suite B1
Southaven, MS 38671

<http://www.kwcommercial.com>

PRESENTED BY:

RHODES THOMPSON

COMMERCIAL AGENT
(662) 892-4000
rhodes@partners-one.com
Mississippi

PROPERTY SUMMARY

478 Marathon Way
478 Marathon Way | Southaven, MS 38671



Property Description

Located in the heart of Southaven MS, this space offers a prime location that is nestled on a connecting street right behind Sam's Club. This is a modern strip center with 12 x 12 garage doors, office space, bathrooms, and a lot of space to spread out! Give our expert commercial real estate team a call today if you'd like more info!

Property Overview

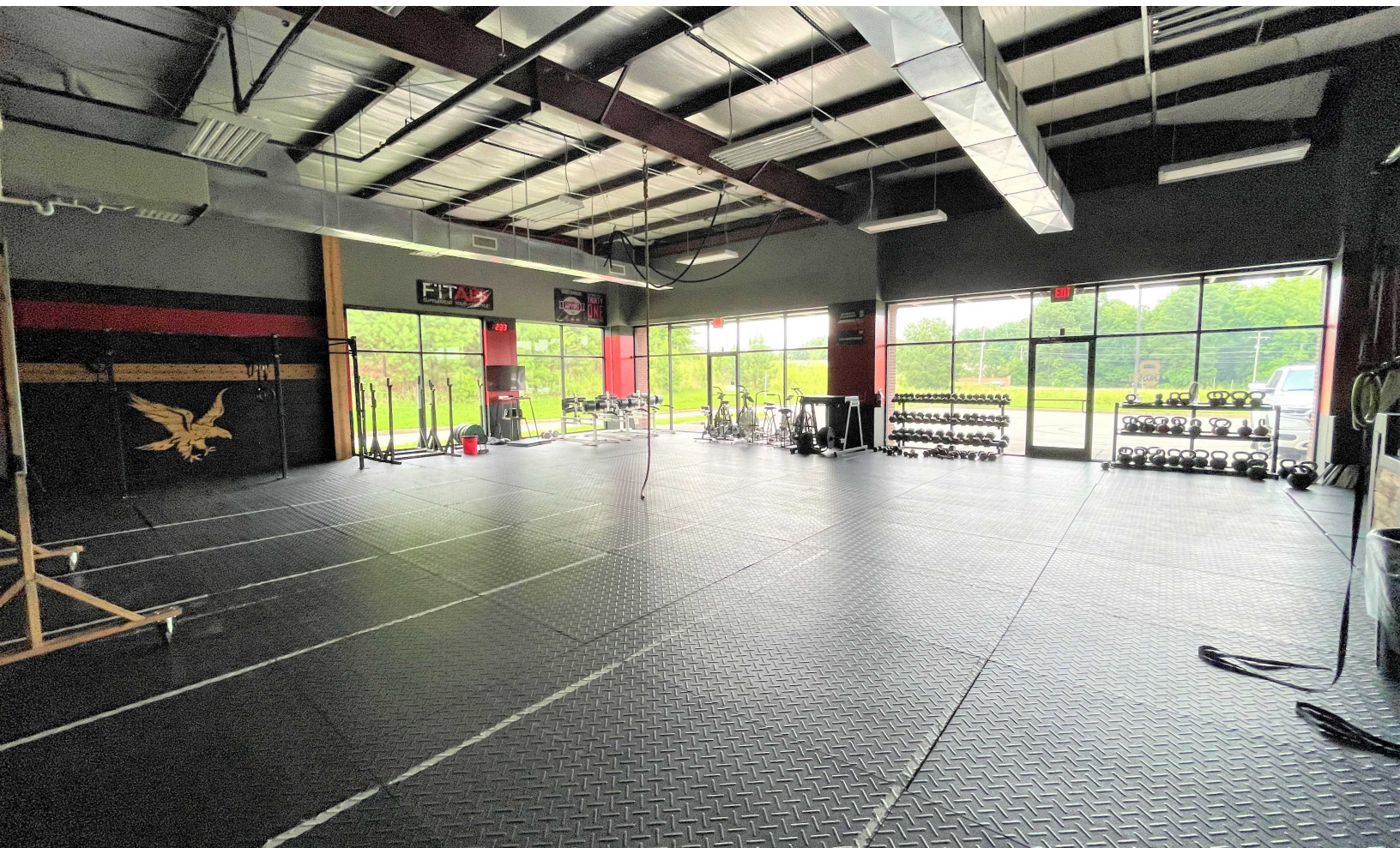
Just a Mile from Interstate 55 in Hernando!
Great Retail Strip Center Right behind
Sam's
Glass Storefront with Open Plan

Location Overview

Take the Goodman Road Exit off I-55 and this location sits between Airways and Elmore Road on Marathon Way in Southaven.

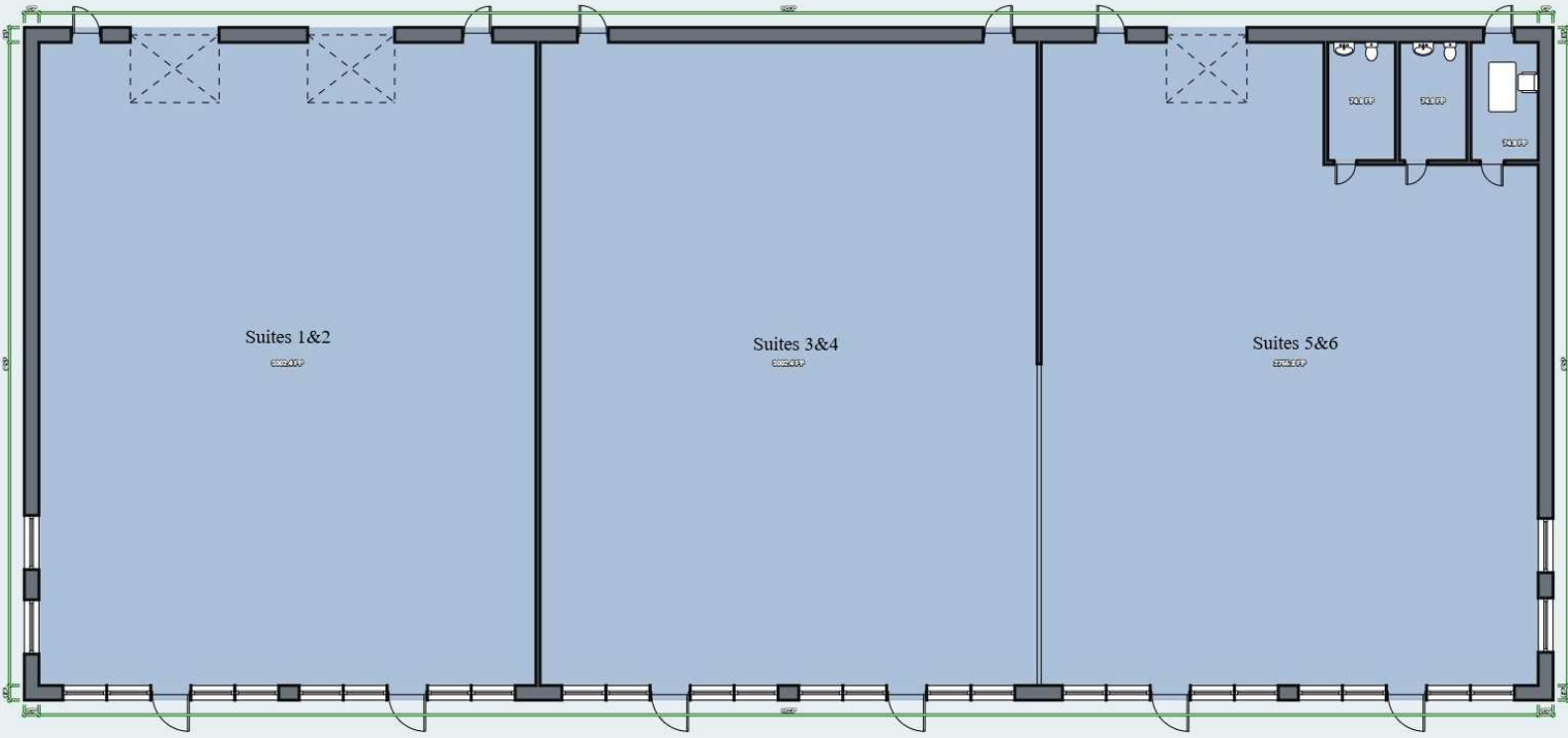
PROPERTY PHOTOS

478 Marathon Way
478 Marathon Way | Southaven, MS 38671



AVAILABLE SPACES

478 Marathon Way
478 Marathon Way | Southaven, MS 38671



Available Spaces

Space	Size	Term	Rate	Space Use	Condition	Available
3 & 4	3,000	3-5 Years	\$3,000 /mo	Retail	Excellent	4/2022
5 & 6	3,000	3-5 Years	\$3,000 /mo	Retail	Excellent	1/2022

NNN Charges will be added to base rent of \$12 PSF