
647 Broadway

**PRIME GREENWICH VILLAGE
RETAIL LOCATION FOR LEASE**



NEWMARK

**GREENWICH VILLAGE
NEW YORK, NY**

647 Broadway

Location

West block between Bleecker and Bond Streets

Approximate Size

Ground Floor 1,900 SF
Basement 2,000 SF
Total SF 3,900 SF

Frontage

22 FT on Broadway

Possession

Immediate

Site Status

Formerly Zigi Shoes

Neighbors

New York University, Best Buy, PetSmart, Wendy's, Swatch, Gregor's Coffee, New York Sports Club, Urban Outfitters, Starbucks, Crate and Barrel and Blick Art Materials

Comments

All uses considered.

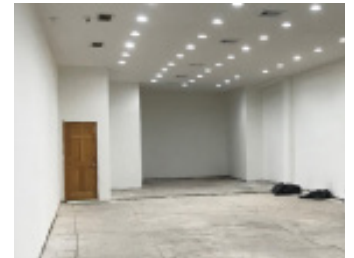
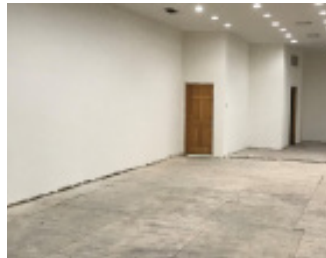
Space can be vented for cooking.

Highly trafficked shopping corridor in close proximity to New York University.

Busy 24/7 365 days a year.

Former tenant was a very successful shoe retailer that had been located in the space for over 15 years.

Ground Floor



AREA MAP



CONTACT

Marc Leber
 t 212-372-2432
 mleber@ngkf.com

Mai Shachi
 t 212-916-2927
 mai.shachi@ngkf.com

nmrk.com

⊕ COMING SOON