



**VOTAW ALPINE CAMP  
±160 AC - FOR SALE**

**EAST VOTAW RD. NEAR FOREST  
SERVICE RD. 8N15 & COLE CREEK RD.  
AMADOR COUNTY, CA**

**PURCHASE PRICE: ~~\$395,000~~  
REDUCED PRICE: \$360,000**



**TRI Outdoor Properties**

LAND BROKERAGE | Recreational · Agricultural · Conservation  
A Division of TRI Commercial Real Estate Services, Inc.

# Property Info ~ Votaw Alpine Camp, Amador County, CA

Property Address: East Votaw Rd. near Forest Service Rd.  
& Cole Creek Rd., Amador County, CA

Cross Street: Salt Springs Road

APN: 028-060-008

Latitude: 38.526552

Longitude: -120.194241

MLS #: 17043461

Improvements: None

Acres: **160.0 Acres**

Zoning: R1A

Elevation: ±6,600 Feet

Price: **\$360,000**

Terms: Cash or Term. Call Agent for details.



Area Description: Great opportunity for rustic high country camp or off-grid summer lodge. Nice open space with beautiful surroundings. Completely surrounded by Government land. One of the last large parcels available in area. Beautiful large pine trees and views. Great base camp for high country trekking. Close to Mokelumne Wilderness, Tangelfoot Trail and Shiner Lake. Also, not far from Bear River Reservoir and resorts. In winter, property is surrounded by miles of groomed public snowmobile trials making it a perfect winter retreat. Property can be subdivided to 40 acre parcels with County approval.

Directions: Call Agent for Directions.

# Property Pictures ~ Votaw Alpine Camp, Amador County, CA



# Property Pictures ~ Votaw Alpine Camp, Amador County, CA

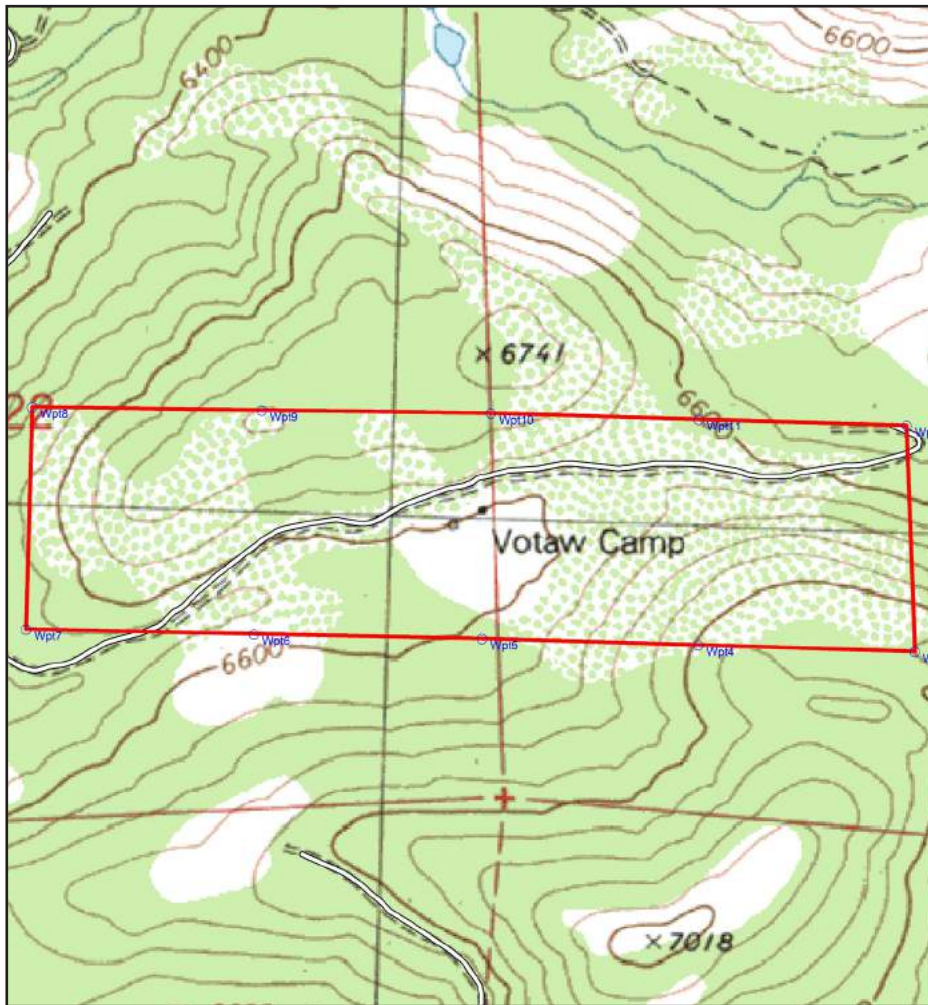


# Property Pictures ~ Votaw Alpine Camp, Amador County, CA

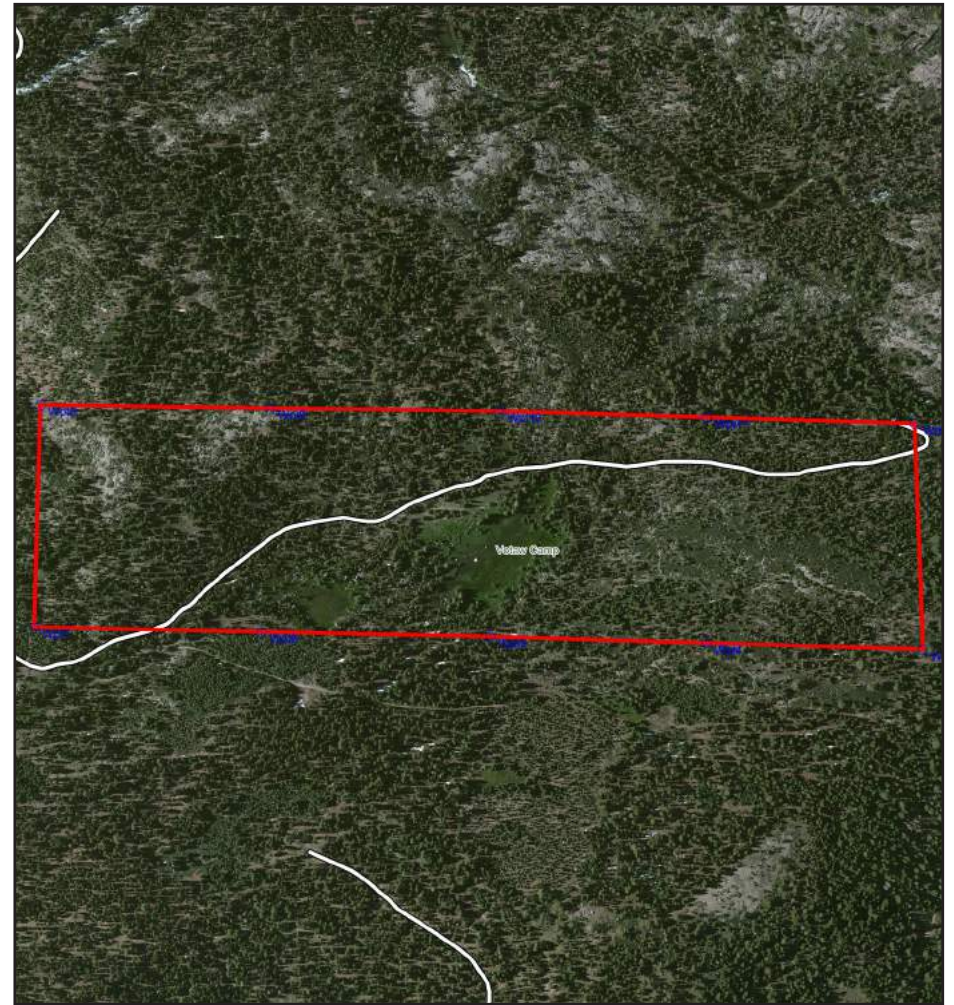


# Property Maps ~ Votaw Alpine Camp, Amador County, CA

**Topographical Map**



**Aerial Map**

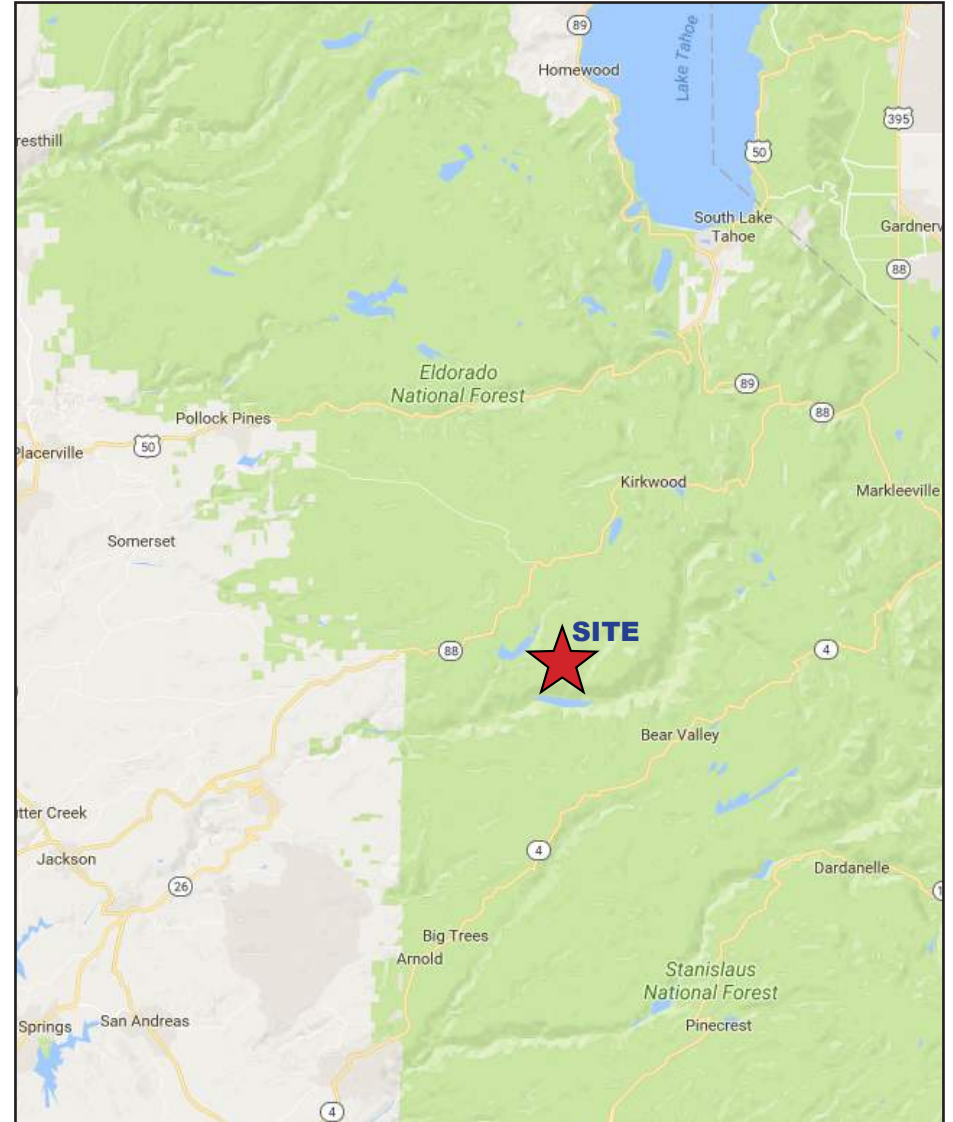


# Property Maps ~ Votaw Alpine Camp, Amador County, CA

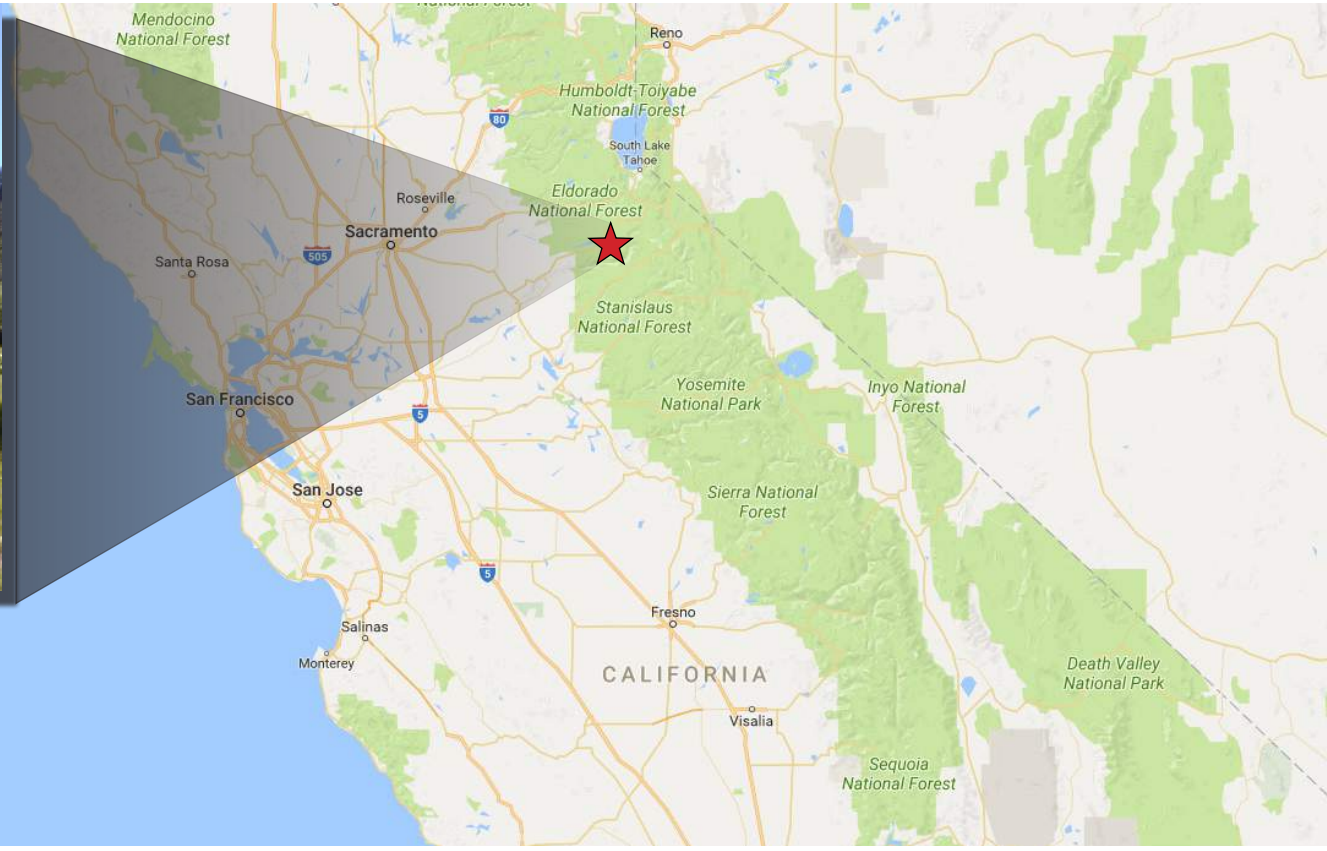
## Site Map



## Area Map



# For Sale ~ Votaw Alpine Camp, Amador County, CA



**For Sale: ±160 AC  
\$360,000**

For More Information Contact:



**Mike Kuppenbender, ALC, CCIM, SIOR**  
BRE License #: 00811112  
mkupp@tricommercial.com  
916.960.5709



**Olen Zirkle, ALC**  
BRE License #: 01190000  
ozirkle@tricommercial.com  
916.960.5703

**TRI Outdoor Properties**

532 Gibson Drive, Suite 200, Roseville, CA 95678  
LAND BROKERAGE | Recreational · Agricultural · Conservation

A Division of TRI Commercial Real Estate Services, Inc.

The information in this document was obtained from sources we deem reliable; however, no warranty or representation, expressed or implied, is made as to the accuracy of the information contained herein.