

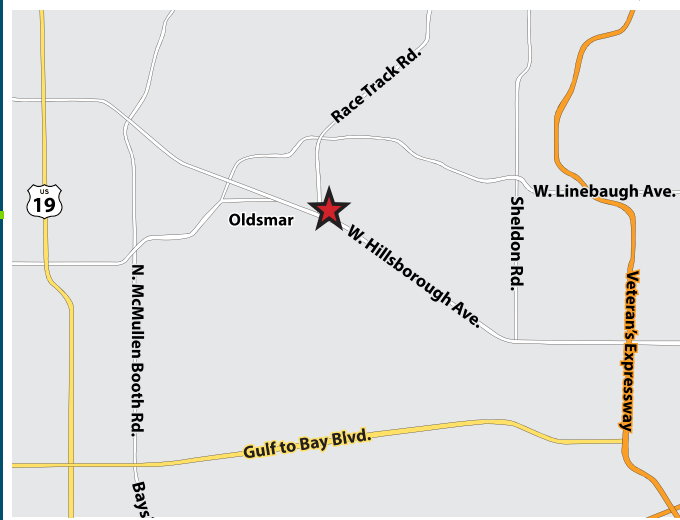
For Lease



W. Hillsborough - Oldsmar Gateway

13650 W. Hillsborough Ave. | Tampa, FL 33635

- 1500 sf professional office, available September 2018
- Sought after oversized executive office can facilitate training, seminars or large conferencing needs
- Fully plumbed and wired for potential medical use
- Ideal location on busy Hillsborough Ave. with a traffic count of over 54,000 cars per day
- High visibility pylon signage and prominent spot in the park for maximum exposure
- Serene setting on lush conservation means no rear neighbors
- Fast easy access to TIA, US 19 and Veterans Expressway



THERESA MARGARIS

T: 727-238-3876 x305

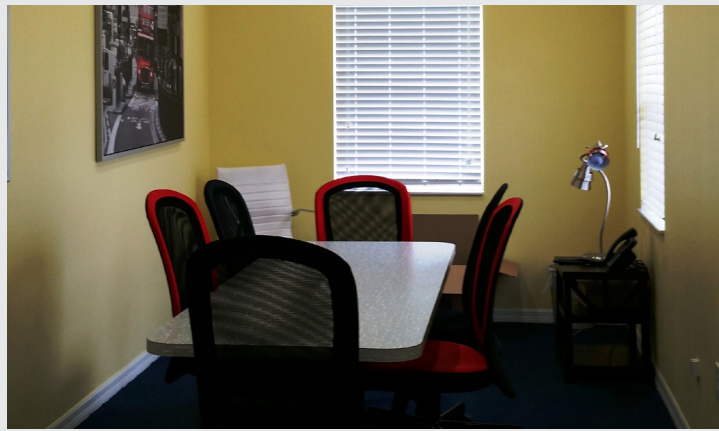
M: 813-765-0948

tmargaris@holdthyssen.com

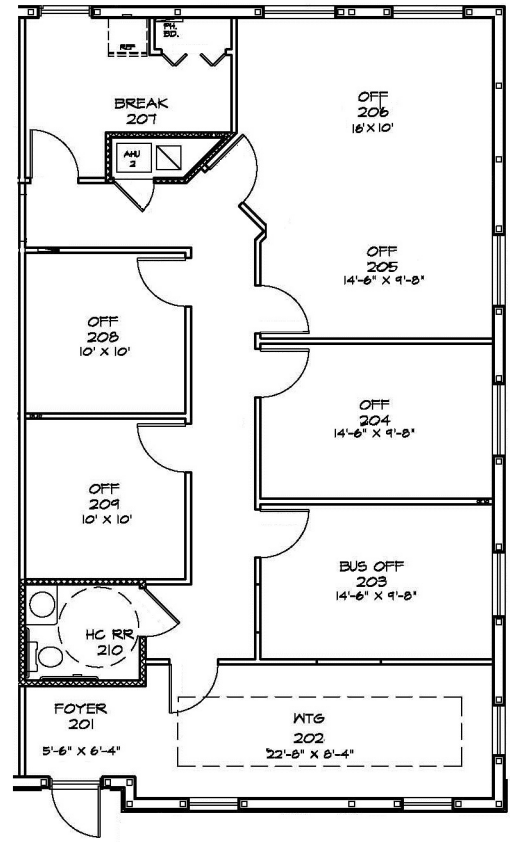
28163 US Highway 19 N.
Clearwater, FL 33761

www.holdthyssen.com

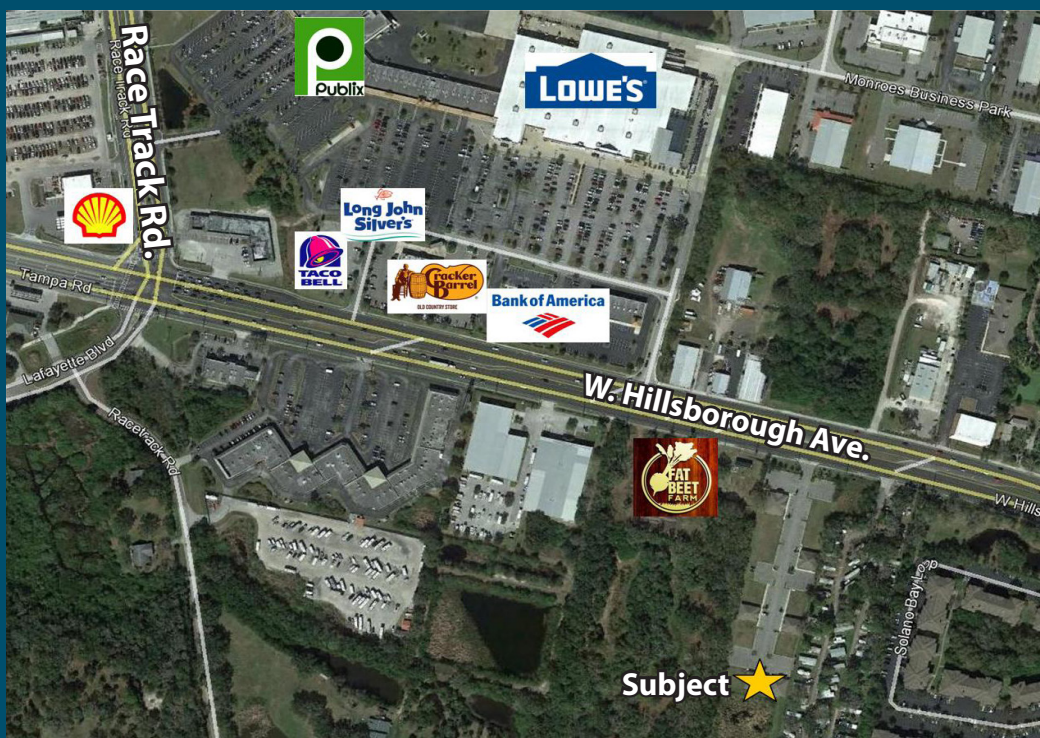
PHOTOS



FLOOR PLAN



AERIAL Covington Professional Park



Subject ★

FOR MORE INFORMATION:



THERESA MARGARIS tmargaris@holdthysen.com T: 727-238-3876 x305 M: 813-765-0948

28163 US Highway 19 N. Clearwater, FL 33761



www.holdthysen.com

The information above has been obtained from sources believed reliable. While we do not doubt its accuracy we make no guarantee, warranty or representation about it. It is your responsibility to independently confirm its accuracy and completeness. Any projections, opinions, assumptions, or estimates used are for example only and do not represent the current or future performance of the property. Hold-Thysen, Inc. is a licensed real estate broker.