

FOR LEASE

RAISL BUILDING

2323 North 30th Ave / Tacoma, WA 98403



[CLICK HERE FOR VIRTUAL TOUR](#)

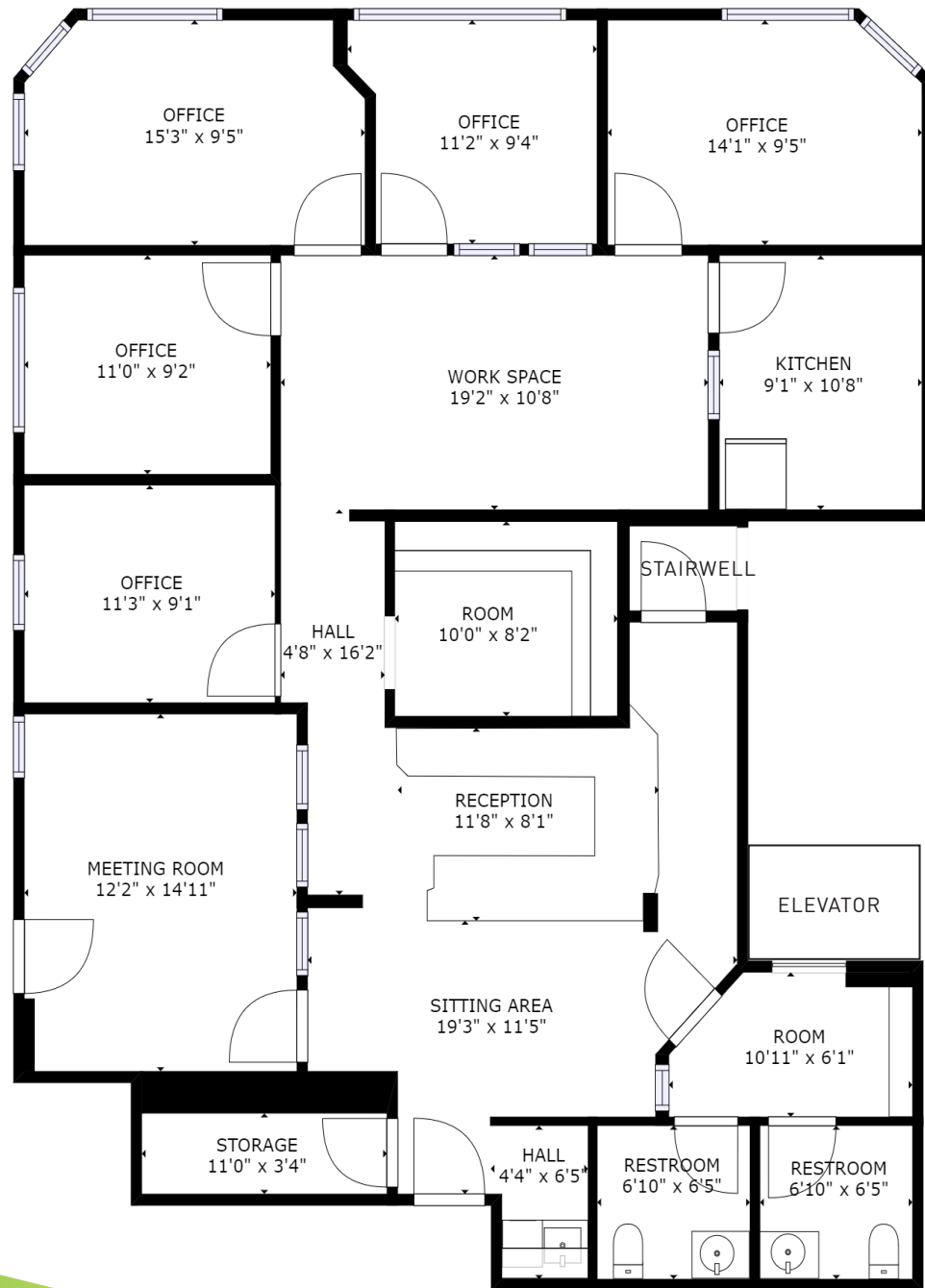


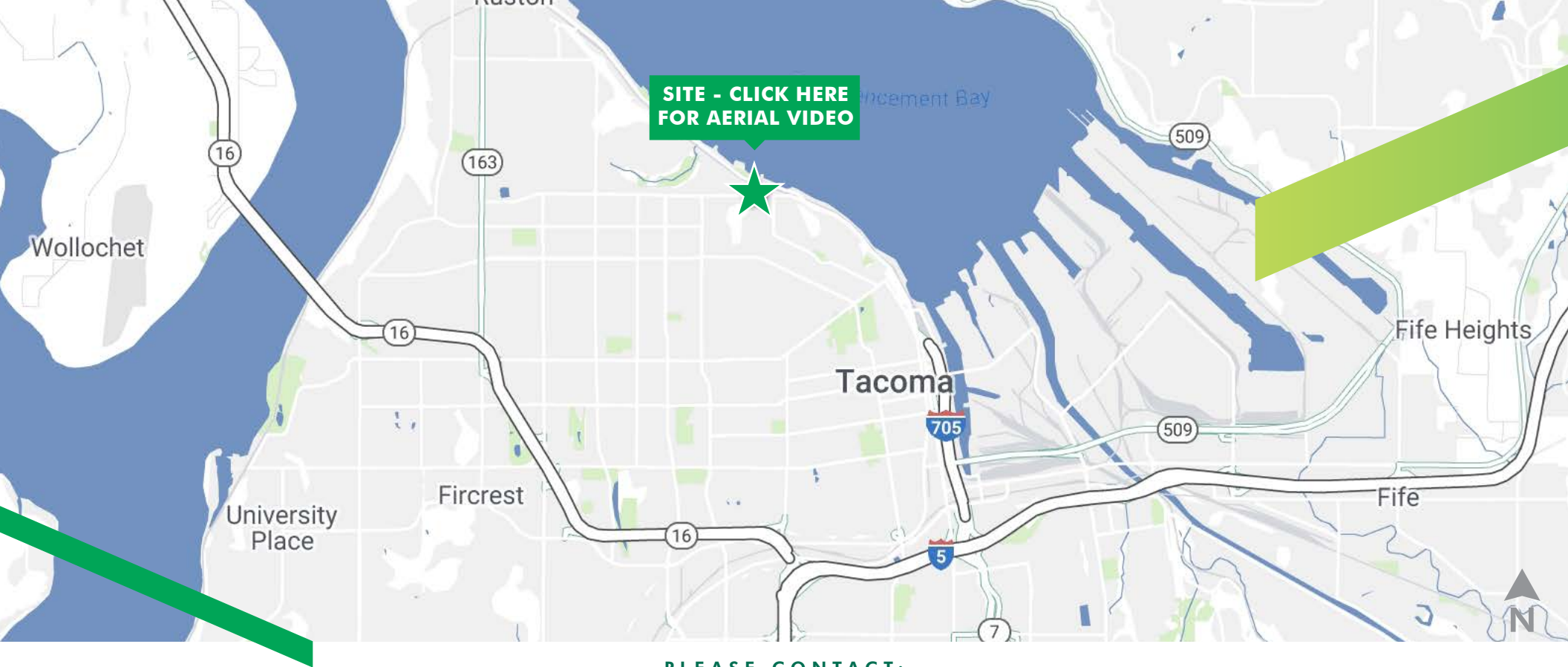
PROPERTY INFO

- + Suite 100: $\pm 2,088$ RSF
- + \$28 PSF, modified gross (excludes janitorial)
- + 5 private offices plus a conference room
- + Free off-street parking and plentiful street parking available
- + Desirable location with waterfront, retail & restaurants in walking distance



FLOOR PLAN





**SITE - CLICK HERE
FOR AERIAL VIDEO**

PLEASE CONTACT:

JOHN BAUDER

First Vice President
+1 253 596 0047
john.bauder@cbre.com

HARRISON LAIRD

Vice President
+1 253 596 0030
harrison.laird@cbre.com

CBRE, INC.

1201 Pacific Avenue
Suite 1502
Tacoma, WA 98402

© 2020 CBRE, Inc. All rights reserved. This information has been obtained from sources believed reliable, but has not been verified for accuracy or completeness. You should conduct a careful, independent investigation of the property and verify all information. Any reliance on this information is solely at your own risk. CBRE and the CBRE logo are service marks of CBRE, Inc. All other marks displayed on this document are the property of their respective owners, and the use of such logos does not imply any affiliation with or endorsement of CBRE. Photos herein are the property of their respective owners. Use of these images without the express written consent of the owner is prohibited. 09.30.20