



OFFICE SPACE FOR LEASE

W. 1st Street & Oak Avenue Sanford, Florida 32771

Contact: Dan Van Nada, CCIM
Sales & Leasing Associate

E: Dan@FCPG.com
P: 407.872.0209 ext. 117

For Lease: \$16.50 SF, Full Service

Availability: Suite 236: ± 616 SF

Located on Main Street of Downtown Sanford's Historic District.

Beautiful new streetscapes completed on First Street.

Ample street and municipal parking.

Additional parking one block south.

Walking distance to Seminole County Courthouse and Lake Monroe.



DEMOGRAPHICS

2018

5 Min

10 Mins

15 Mins



Total Population

9,035

47,579

100,706



Total Households

3,715

17,919

38,660



Median HH Income

\$29,782

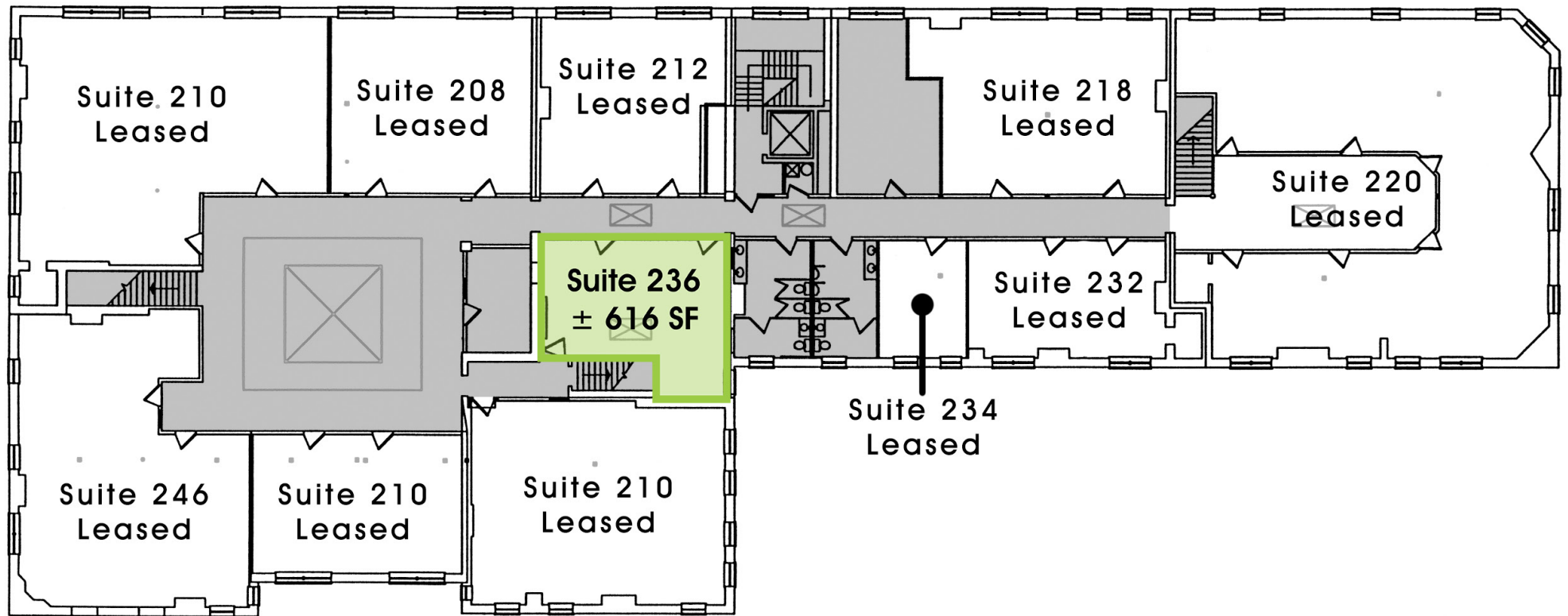
\$38,842

\$50,338

1516 E. Hillcrest Street, Suite 210, Orlando, FL 32803 Phone: 407.872.0209 Fax: 407.426.8542

Information furnished regarding the subject property is believed to be accurate, but no guarantee or representation is made. References to square footage are approximate. This offering is subject to errors, omissions, prior sale or lease or withdrawal without notice. ©2018 First Capital Property Group, Inc., Licensed Real Estate Brokers & Managers.

Floorplan



■ 1516 E. Hillcrest Street, Suite 210, Orlando, FL 32803 ■ Phone: 407.872.0209 ■ Fax: 407.426.8542 ■

Information furnished regarding the subject property is believed to be accurate, but no guarantee or representation is made. References to square footage are approximate. This offering is subject to errors, omissions, prior sale or lease or withdrawal without notice. ©2018 First Capital Property Group, Inc., Licensed Real Estate Brokers & Managers.