

FOR SALE

2701 West 10th Street

Antioch, CA

- HOME
- HIGHLIGHTS
- SITE LAYOUT
- FLOOR PLAN
- PARCEL MAP
- LOCATION



±15,818 SF on ±2.78 acres
Including ±.49 acre Excess Land



Scott Bertrand

Director
+1 925 627 2885
scott.bertrand@cushwake.com
LIC #01859508

Ray Devlin

Director
+1 925 202 9175
ray.devlin@cushwake.com
LIC #01199417



FOR SALE

2701 West 10th Street

Antioch, CA



Property Features

- Hard Corner retail, office, industrial, R&D property available for sale.
- Total Land Area: ±2.78 Acres
- Building Coverage: 13%
- Parcel numbers (APN): 074-051-029
- Zoning: PBC - Planned Business Center

This district provides sites in landscaped settings for office centers, research and development facilities, limited industrial activities (including production and assembly, but no raw materials processing or bulk handling), limited warehouse type retail and commercial activities, and small-scale warehouse distribution. To find out more, call Antioch City Planning 925-779-7035.

Zoning Table

Interactive Zoning Map

Demographic Data

Building Features

- Building Size
 - ±15,818 SF
 - Store: ±8,404 SF
 - Warehouse: ±4,969 SF
 - Office: ±2,645 SF
- Loading Dock
 - ±1,800 SF
 - Dock positions: four (4)
 - Roll up door: ±8' W x ±12' H
- Clear Height: ±14-16'
- Fully-conditioned with insulation below the roof deck
- Fully-sprinklered
- Power: ±600 AMPS @240v 3-phase*
- Alarm and CCTV system
- Year Built: 1993-1994
- Construction: wood frame with stucco
- Original build-to-suit for Goodwill

**Subject to PG&E verification*

Land Features

- Yard
 - ±41,997 SF (±.96 AC)
 - Paved and fenced
 - ±251' W x ±165' D
- Excess Land
 - ±21,344 SF (±.49 AC)
 - Shovel ready
- Two (2) curb cuts
- Frontage
 - ±345' on Pittsburg-Antioch Hwy
 - ±350' on Verne Roberts Circle

Scott Bertrand

Director

+1 925 627 2885

scott.bertrand@cushwake.com

LIC #01859508

Ray Devlin

Director

+1 925 202 9175

ray.devlin@cushwake.com

LIC #01199417

FOR SALE

2701 West 10th Street

Antioch, CA

HOME

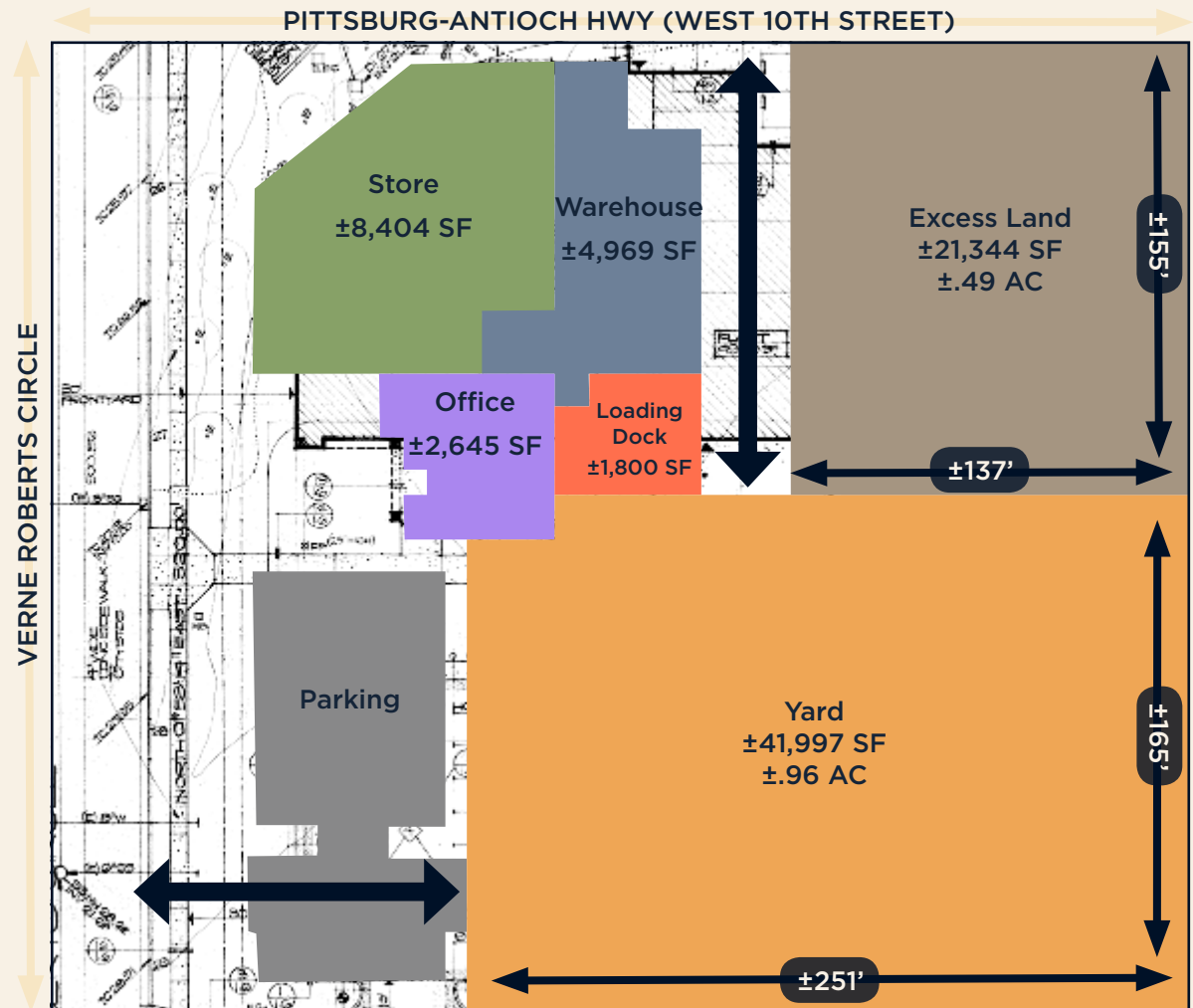
HIGHLIGHTS

SITE LAYOUT

FLOOR PLAN

PARCEL MAP

LOCATION



Scott Bertrand

Director
+1 925 627 2885
scott.bertrand@cushwake.com
LIC #01859508

Ray Devlin

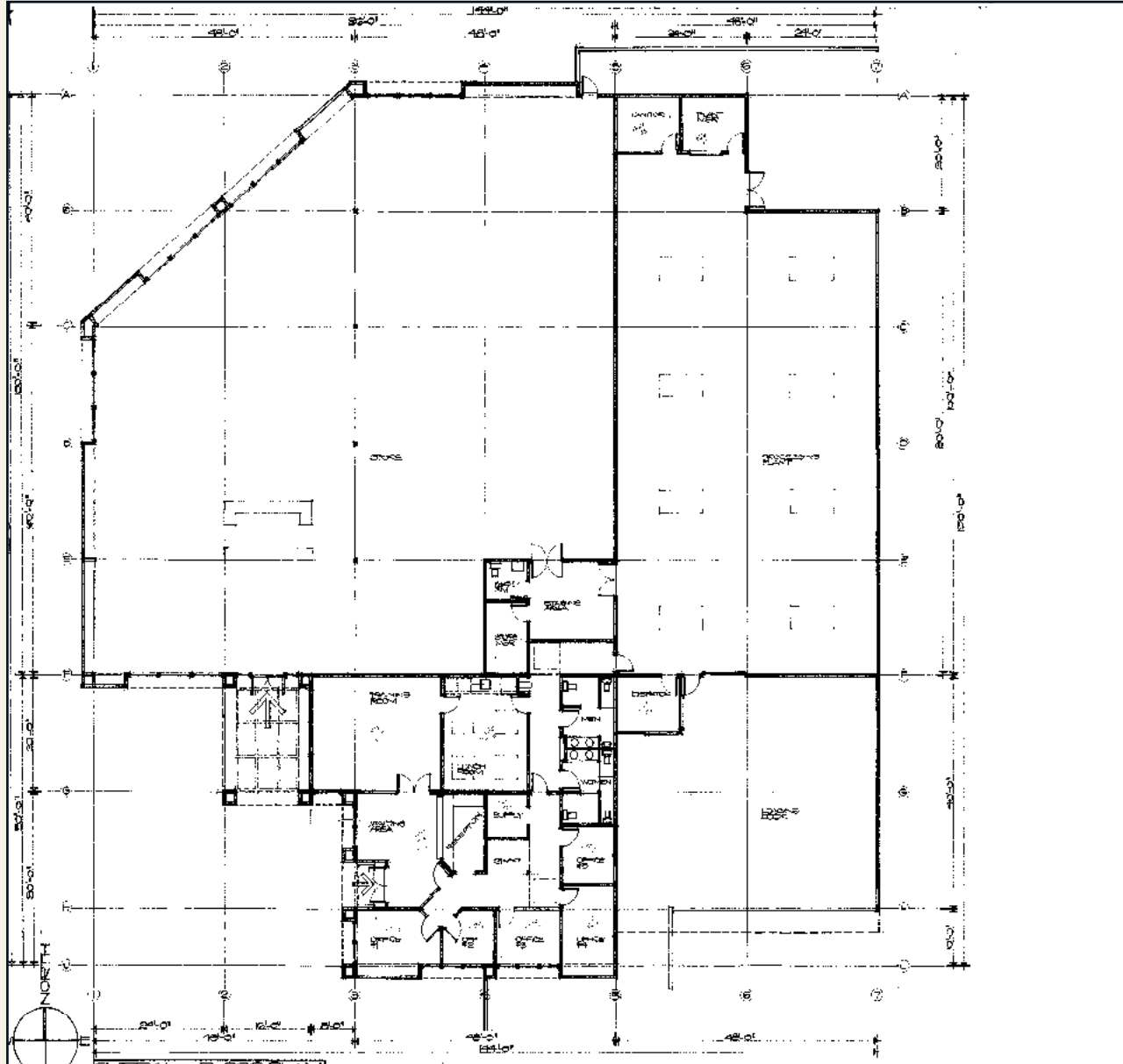
Director
+1 925 202 9175
ray.devlin@cushwake.com
LIC #01199417

FOR SALE

2701 West 10th Street

Antioch, CA

HOME HIGHLIGHTS SITE LAYOUT **FLOOR PLAN** PARCEL MAP LOCATION



Floor Plan 1

Floor Plan 2

Scott Bertrand

Director

+1 925 627 2885

scott.bertrand@cushwake.com

LIC #01859508

Ray Devlin

Director

+1 925 202 9175

ray.devlin@cushwake.com

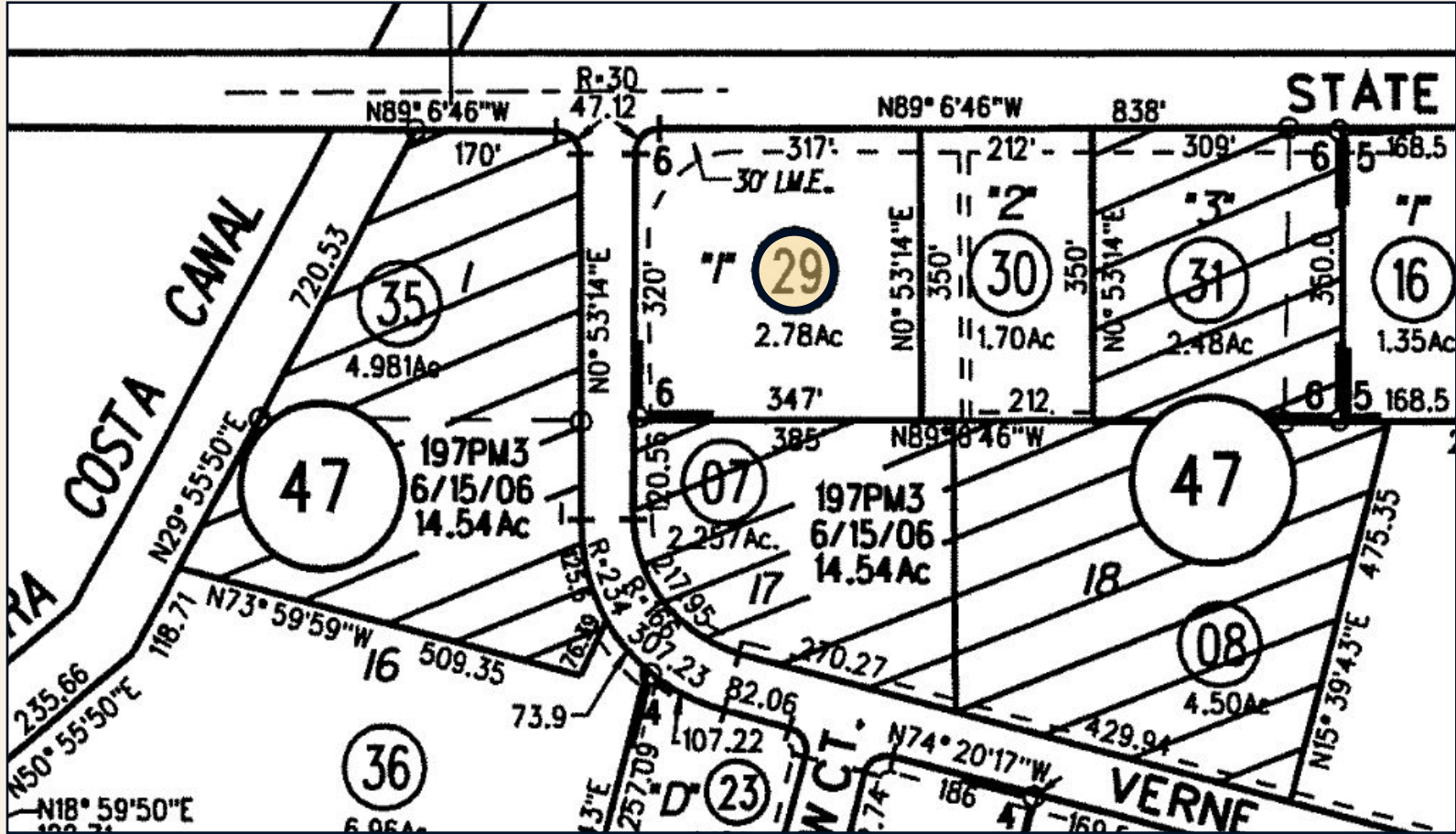
LIC #01199417

FOR SALE

2701 West 10th Street

Antioch, CA

- HOME
- HIGHLIGHTS
- SITE LAYOUT
- FLOOR PLAN
- PARCEL MAP**
- LOCATION



Scott Bertrand

Director

+1 925 627 2885

scott.bertrand@cushwake.com

LIC #01859508

Ray Devlin

Director

+1 925 202 9175

ray.devlin@cushwake.com

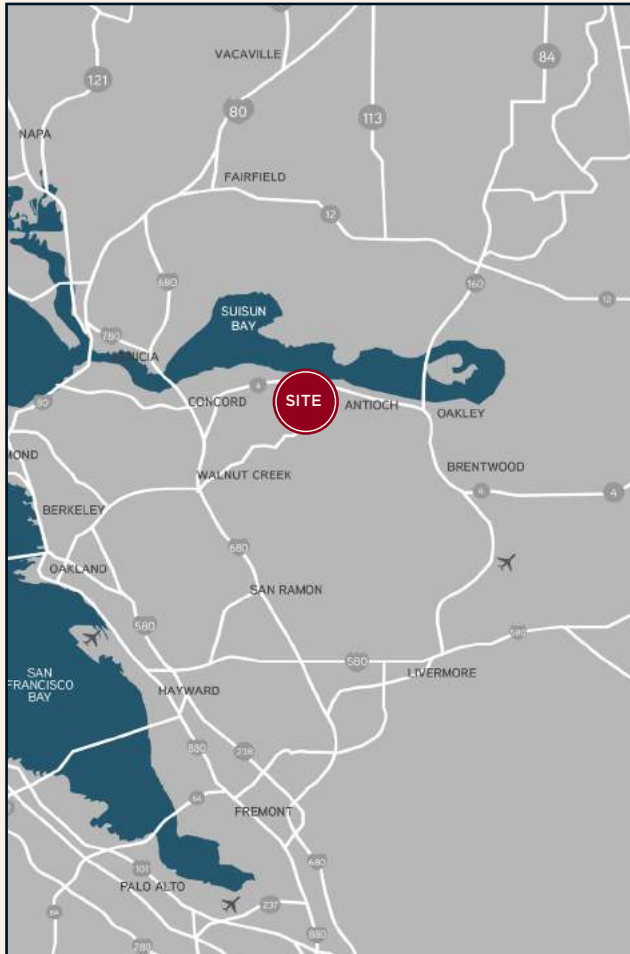
LIC #01199417

FOR SALE

2701 West 10th Street

Antioch, CA

- HOME
- HIGHLIGHTS
- SITE LAYOUT
- FLOOR PLAN
- PARCEL MAP
- LOCATION



Scott Bertrand

Director
+1 925 627 2885
scott.bertrand@cushwake.com
LIC #01859508

Ray Devlin

Director
+1 925 202 9175
ray.devlin@cushwake.com
LIC #01199417