

INDUSTRIAL/FLEX SPACE FOR LEASE

4730 E. FRONTAGE ROAD | CALEDONIA, WI



BUILDING SIZE:

±21,267 SF

AVAILABLE SPACE:

Unit 4: ±3,320 SF (with 829 SF Office Space)

PARCEL SIZE:

±8.407 Acres

LEASE RATE:

\$14.00/SF, NNN

INDUSTRIAL/FLEX SPACE FOR LEASE

PROPERTY HIGHLIGHTS:

- Insulated ceiling
- Metal panel construction
- Air make up system in each unit
- Drive-thru bay in each unit
- Outside storage, showroom and trailer staging
- Over 1000' of I-94 frontage

For information, please contact:

TRAVIS TIEDE

414.395.4682

travis.tiede@ngkf.com

MITCHELL STARCZYNSKI

414.395.4692

mitchell.starczynski@ngkf.com

ADAM MATSON, SIOR

262.613.6096

adam.matson@ngkf.com





INDUSTRIAL/FLEX SPACE FOR LEASE

4730 E. FRONTAGE ROAD, CALEDONIA, WI

BUILDING FEATURES

CONSTRUCTION:

Metal Tilt Up Panel

YEAR BUILT:

2019

SPRINKLER:

Yes

CEILING HEIGHT:

±19' - 21' Clear

ZONING:

B-3 Commercial Service

PARKING:

Ample

UTILITIES:

Municipal Sewer & Water

UNIT 4 FEATURES

SIZE:

±3,320 SF

WAREHOUSE SF:

±2,491 SF

OFFICE SF:

±829 SF

DRIVE-INS:

3 - 12'x18'

HVAC:

Gas Fired Unit Heaters (Warehouse)

Forced Air (Office)

LIGHTING:

LED

POWER:

Single Phase, 120/240V (Separately Metered)

FLOOR DRAINS:

Yes



For information, please contact:

TRAVIS TIEDE

414.395.4682

travis.tiede@ngkf.com

MITCHELL STARCZYNSKI

414.395.4692

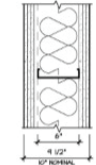
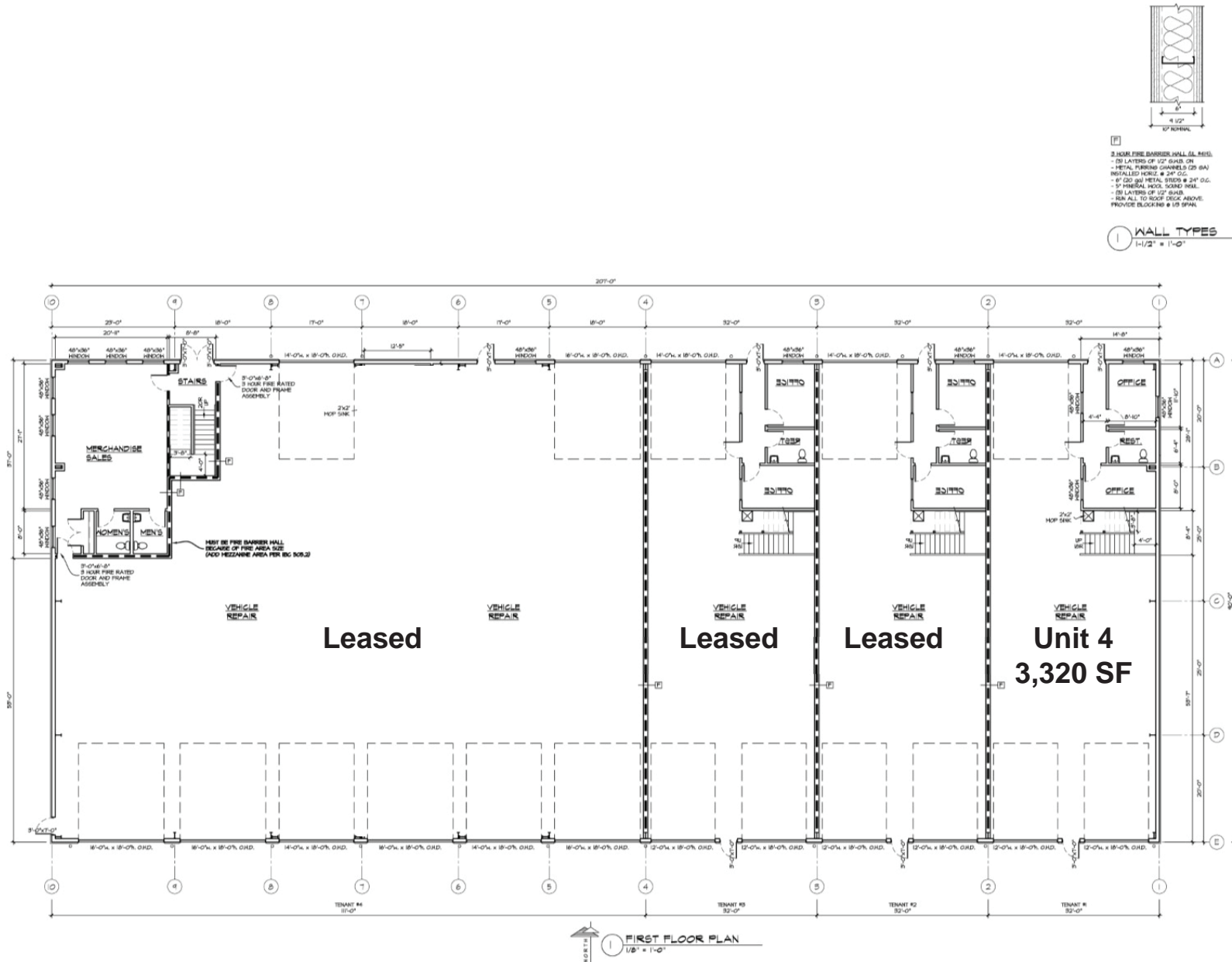
mitchell.starczynski@ngkf.com

ADAM MATSON, SIOR

262.613.6096

adam.matson@ngkf.com





3 HOUR FIRE BARRIER WALL (L. H.H.)
 - (2) LAYERS OF 1/2" G&B ON
 - METAL FINISH CHANNEL (2) S/A
 REPAILED HORIZ @ 2" O.C.
 - 5" G&B METAL STUDS @ 24" O.C.
 - 5" FIBERGLASS INSUL. SOUND SEAL
 - (2) LAYERS OF 1/2" G&B
 - RUN ALL TO ROOF DECK ABOVE.
 PROVIDE BLOCKING @ 10' SPAN.

1 WALL TYPES
 1-1/2" = 1'-0"

PATERA LLC
 Excellence in Architecture
 2601 S. Sunny Slope Rd. • New Berlin, WI 53151
 262-786-8776 FAX 262-786-7036



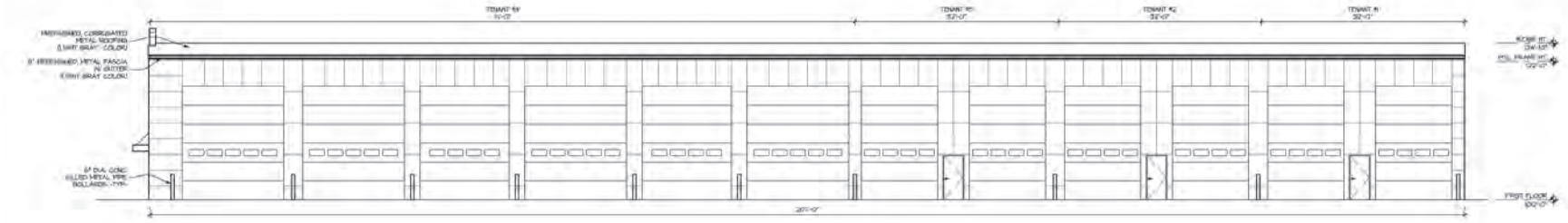
REVISIONS:
 4/18/18: PRELIM #1
 4/25/18: APPROVAL SET
 5/17/18: APPROVAL SET #2
 5/22/18: UPDATED APPROVALS

IN-AUTO TRUCKING CENTER

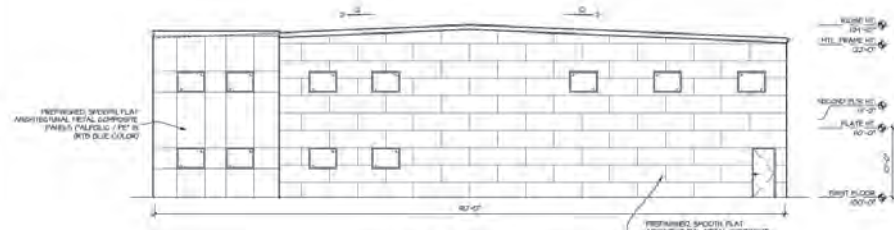
HWY 6 & EAST FRONTAGE ROAD
 CALDERON, WI
 SHEET TITLE:
FIRST FLOOR PLAN, & WALL TYPES

A-1

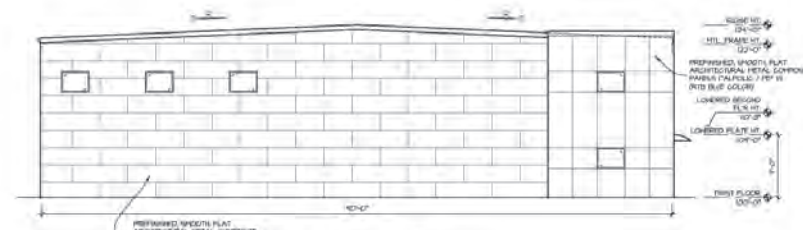
DATE: APRIL 18, 2018
 PROJECT NUMBER: 17-392



1 SOUTH ELEVATION
1/8" = 1'-0"



3 WEST ELEVATION
1/8" = 1'-0"



2 EAST ELEVATION
1/8" = 1'-0"



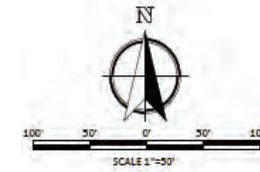
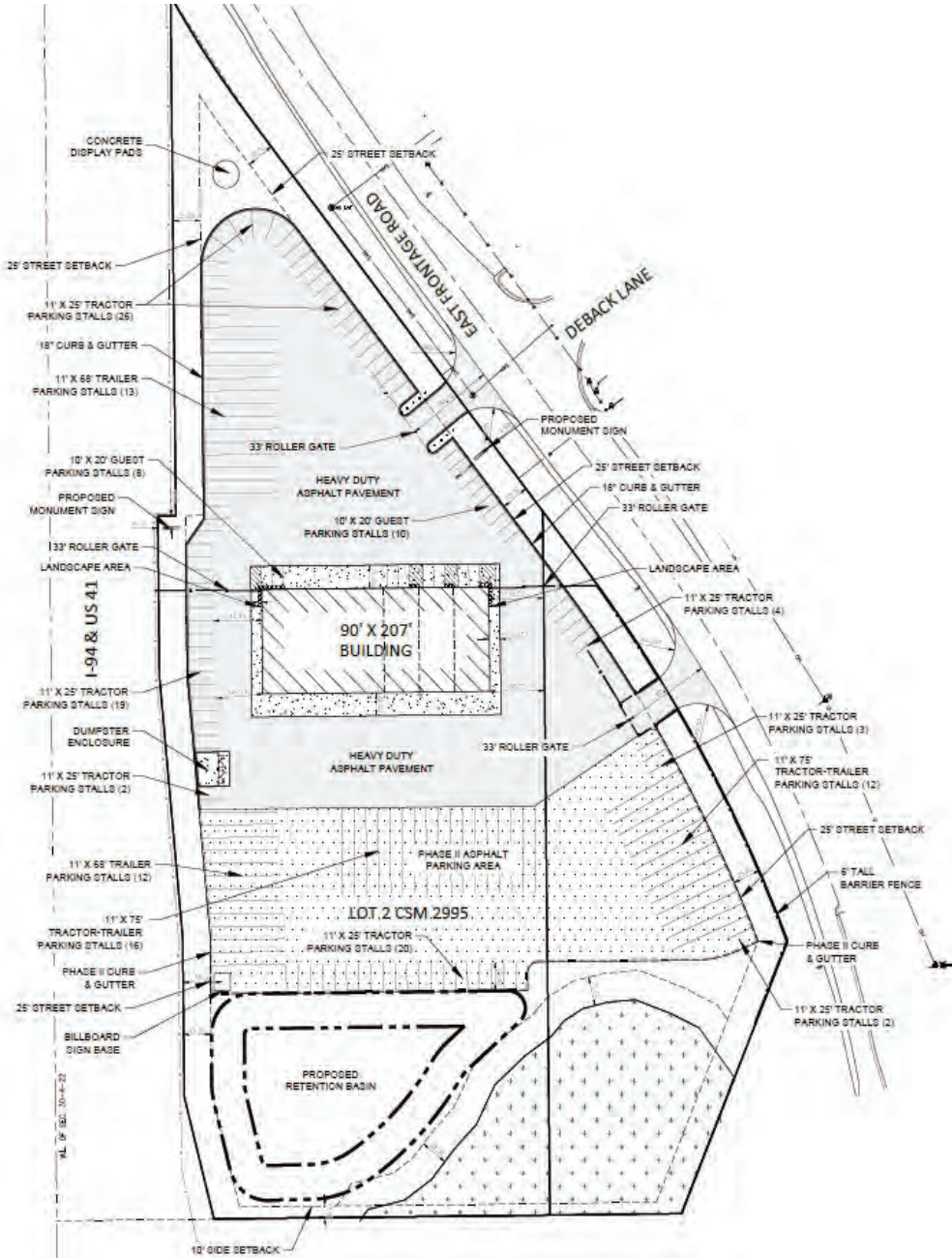
4 NORTH ELEVATION
1/8" = 1'-0"

PATERA LLC
Excellence in Architecture
2601 S. Jersey Slope Rd. • New Berlin, WI 53151
262-786-6776 FAX 262-786-7036

- REVISIONS:
- A/18/18 - WELD #1
 - A/21/18 - APPROVAL SET
 - 1/7/18 - APPROVAL SET #2
 - 1/22/18 - UPDATED APPROVAL

IN-AUTO TRUCKING CENTER
ELEVATIONS

A-3
DATE: APRIL 14, 2018
PROJECT NUMBER: 17-139



PARKING LOT DATA

TRACTOR-TRAILER PARKING:	28 STALLS
TRAILER PARKING:	25 STALLS
TRACTOR PARKING:	76 STALLS
GUEST PARKING:	18 STALLS

UTILITY NOTE

EXISTING UTILITIES ARE SHOWN FOR INFORMATIONAL PURPOSES ONLY AND ARE NOT GUARANTEED TO BE ACCURATE ON ALL INCLUSIVE. CONTRACTOR IS RESPONSIBLE FOR VERIFYING THE TYPE, LOCATION, SIZE AND DEPTH OF UNDERGROUND UTILITIES AS THEY DEEM NECESSARY FOR PROPOSED UTILITY CONNECTIONS AND/OR TO AVOID DAMAGE THERETO. CONTRACTOR SHALL CALL "DIGGER'S HOTLINE" PRIOR TO ANY CONSTRUCTION.

WARNING: CALL 800-NORTH WISCONSIN
COORDINATE SYSTEM, COUNTY ZONE,
BASED UPON NAD83/03

ALL SUBMITTALS ARE TO NATIONAL
DIGGER'S HOTLINE

Call (800) 242-8511
www.DiggersHotline.com

LEGEND

[Symbol] SKIN	[Symbol] FOUNDATION PERMITS
[Symbol] YELLOW FLAG MARKER POSITION	[Symbol] SET BACK PERMITS
[Symbol] HETLAND	[Symbol] FENCE
[Symbol] POWER POLE	[Symbol] OVERHEAD WIRE
[Symbol] 4/4" WIDE	



Nielsen Madsen + Barber
CIVIL ENGINEERS AND LAND SURVEYORS
3458 Horizon Blvd. Suite 200, Racine, WI, 53405
Tel: (262) 694-5586 Website: www.nmbac.net

IN-AUTO TRUCKING CENTER DIMENSIONED SITE PLAN

FOR
M&M EXPRESS, INC.
VILLAGE OF CALEDONIA, RACINE COUNTY, WISCONSIN

NO.	REVISION	BY	DATE

PROJ. NO.:	2016.0070.02
DRAFTED:	MCB
DATE:	11/5/2016
CHECKED:	MCB
DATE:	11/29/2016

SHEET

SUE FOR REVIEW - 8-2-2018



STATE OF WISCONSIN BROKER DISCLOSURE TO NON-RESIDENTIAL CUSTOMERS

Prior to negotiating on your behalf the brokerage firm, or an agent associated with the firm, must provide you the following disclosure statement.

BROKER DISCLOSURE TO CUSTOMERS

You are the customer of the brokerage firm (hereinafter Firm). The Firm is either an agent of another party in the transaction or a subagent of another firm that is the agent of another party in the transaction. A broker or a salesperson acting on behalf of the Firm, may provide brokerage services to you. Whenever the Firm is providing brokerage services to you, the Firm and its brokers and salespersons (hereinafter Agents) owe you, the customer, the following duties:

- The duty to provide brokerage services to you fairly and honestly.
- The duty to exercise reasonable skill and care in providing brokerage services to you.
- The duty to provide you with accurate information about market conditions within a reasonable time if you request it, unless disclosure of the information is prohibited by law.
- The duty to disclose to you in writing certain Material Adverse Facts about a property, unless disclosure of the information is prohibited by law (see "Definition of Material Adverse Facts" below).
- The duty to protect your confidentiality. Unless the law requires it, the Firm and its Agents will not disclose your confidential information or the confidential information of other parties (see "Confidentiality Notice To Customers" below).
- The duty to safeguard trust funds and other property held by the Firm or its Agents.
- The duty, when negotiating, to present contract proposals in an objective and unbiased manner and disclose the advantages and disadvantages of the proposals.

Please review this information carefully. An agent of the Firm can answer your questions about brokerage services, but if you need legal advice, tax advice, or a professional property inspection, contact an attorney, tax advisor, or property inspector.

This disclosure is required by section 452.135 of the Wisconsin statutes and is for information only. It is a plain-language summary of a broker's duties to a customer under section 452.133 (1) of the Wisconsin statutes.

CONFIDENTIALITY NOTICE TO CUSTOMERS

The Firm and its Agents will keep confidential any information given to the Firm or its Agents in confidence, or any information obtained by the Firm or its Agents that a reasonable person would want to be kept confidential, unless the information must be disclosed by law or you authorize the Firm to disclose particular information. The Firm and its Agents shall continue to keep the information confidential after the Firm is no longer providing brokerage services to you.

Wisconsin law requires all real estate licensees to give the following information about brokerage services to prospective customers.

The following information is required to be disclosed by law:

1. Material Adverse Facts, as defined in section 452.01 (5g) of the Wisconsin statutes (see "definition of material adverse facts" below).
2. Any facts known by the Firm or its Agents that contradict any information included in a written inspection report on the property or real estate that is the subject of the transaction.

To ensure that the Firm and its Agents is aware of what specific information you consider confidential, you may list that information below or provide that information to the Firm or its Agents by other means. At a later time, you may also provide the Firm or its Agents with other information that you consider to be confidential.

CONFIDENTIAL INFORMATION: _____

NON-CONFIDENTIAL INFORMATION (The following information may be disclosed by the Firm and its Agents): _____

(INSERT INFORMATION YOU AUTHORIZE TO BE DISCLOSED SUCH AS FINANCIAL QUALIFICATION INFORMATION)

SEX OFFENDER REGISTRY

Notice: You may obtain information about the sex offender registry and persons registered with the registry by contacting the Wisconsin Department of Corrections on the Internet at <http://www.doc.wi.gov/> or by phone at 608-240-5830.

DEFINITION OF MATERIAL ADVERSE FACTS

A "Material Adverse Fact" is defined in Wis. Stat. 452.01 (5g) as an adverse fact that a party indicates is of such significance, or that is generally recognized by a competent licensee as being of such significance to a reasonable party, that it affects or would affect the party's decision to enter into a contract or agreement concerning a transaction or affects or would affect the party's decision about the terms of such a contract or agreement.

An "Adverse Fact" is defined in Wis. Stat. 452.01 (1e) as a condition or occurrence that a competent licensee generally recognizes will significantly and adversely affect the value of the property, significantly reduce the structural integrity of improvements to real estate, or present a significant health risk to occupants of the property; or information that indicates that a party to a transaction is not able to or does not intend to meet his or her obligations under a contract or agreement made concerning the transaction.

No representation is made as to the legal validity of any provision or the adequacy of any provision on any specific transaction.