



FOR LEASE

Town Square
Building 3

905 PLUM STREET

Olympia, WA

Kidder
Mathews



SUBJECT PROPERTY



FORMER CITY HALL

5 | ← 1/4 MILE

FOR LEASE

Town Square Building 3

905 PLUM STREET | OLYMPIA, WA

First Floor



TOWN SQUARE Bldg 3
Olympia Central
Business District

1ST FLOOR 6,939 SF

3RD FLOOR 1,653 & 837 SF

\$17.00 NNN

ON SITE, after hours security

NEWLY remodeled, modern
office suite

AMPLE parking

CLOSE TO I-5 with easy
access to Farmers Market,
State Capitol, and amenities

SHELL SPACE ready for TI's,
Landlord offering
turnkey build-out

COMMON areas and
restrooms remodeled

EVAN PARKER
360.705.0174
evan.parker@kidder.com

AMY EVANS
360.705.1377
amy.evans@kidder.com

KIDDER.COM

This information supplied herein is from sources we deem reliable. It is provided without any representation, warranty, or guarantee, expressed or implied as to its accuracy. Prospective Buyer or Tenant should conduct an independent investigation and verification of all matters deemed to be material, including, but not limited to, statements of income and expenses. Consult your attorney, accountant, or other professional advisor.

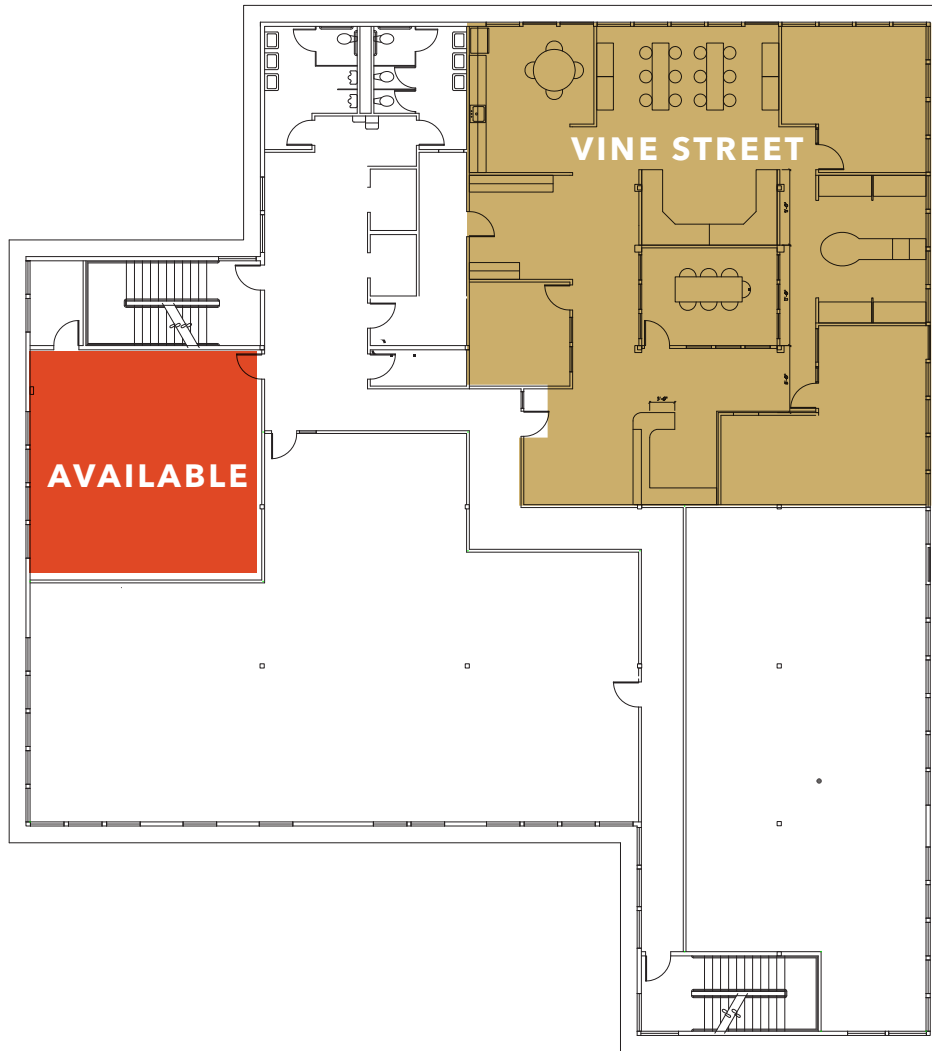
km Kidder
Mathews

FOR LEASE

Town Square Building 3

905 PLUM STREET | OLYMPIA, WA

Third Floor



EVAN PARKER
360.705.0174
evan.parker@kidder.com

AMY EVANS
360.705.1377
amy.evans@kidder.com

KIDDER.COM

This information supplied herein is from sources we deem reliable. It is provided without any representation, warranty, or guarantee, expressed or implied as to its accuracy. Prospective Buyer or Tenant should conduct an independent investigation and verification of all matters deemed to be material, including, but not limited to, statements of income and expenses. Consult your attorney, accountant, or other professional advisor.

