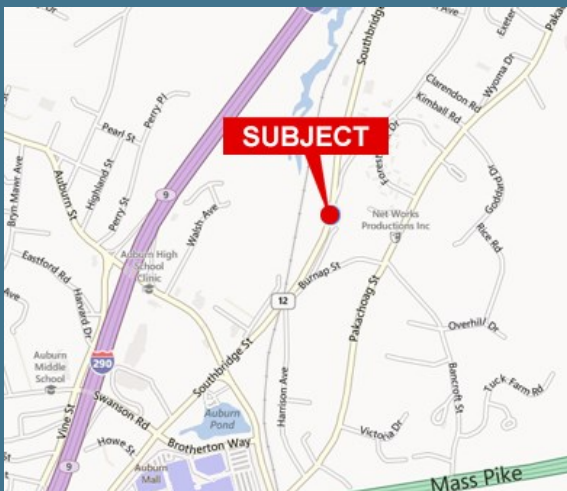
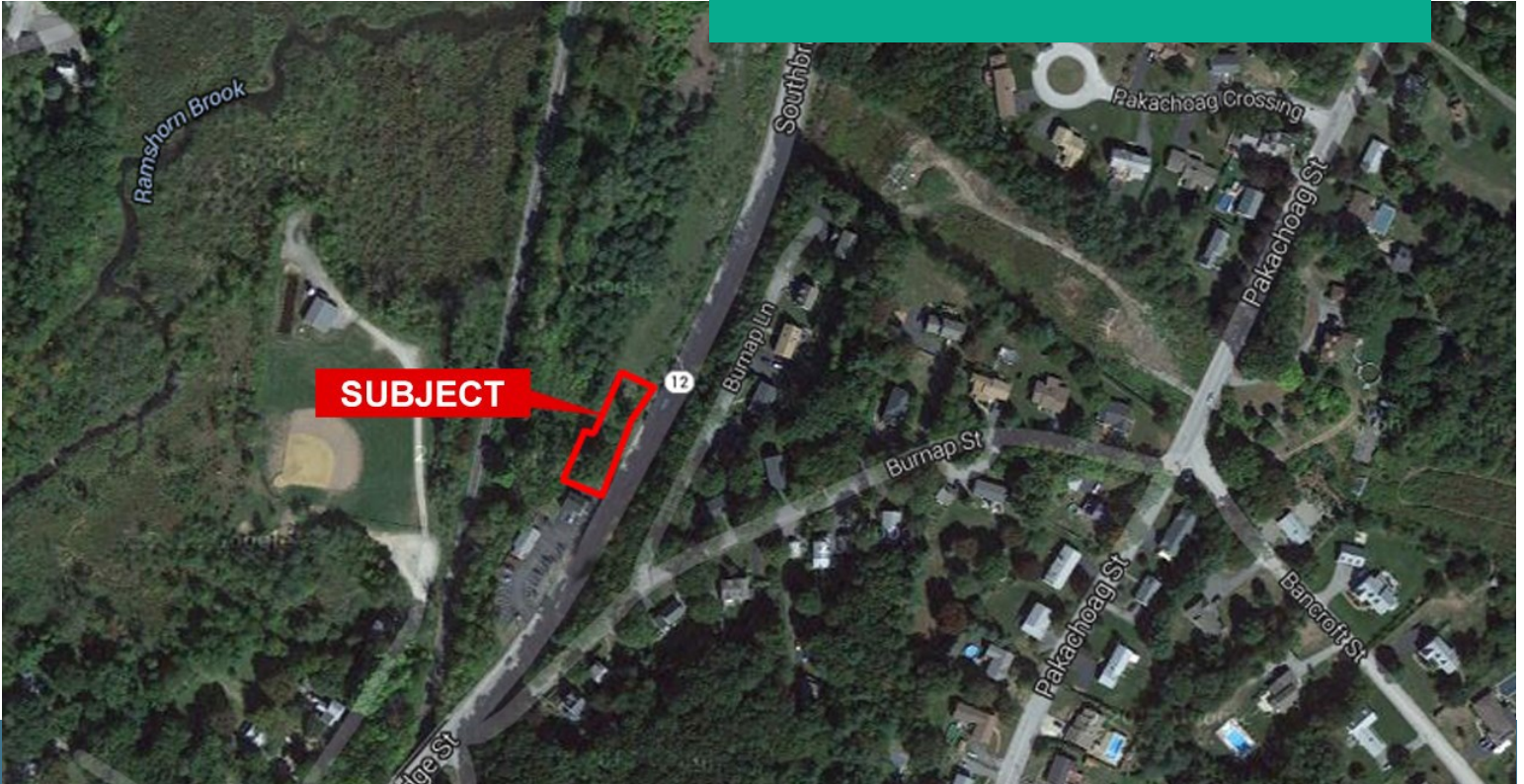




HB Zoned Land

±10.00 Acres For Sale

282 Southbridge Street, Auburn, MA



Users, developers, and outside brokers, please be advised that ±10 acres of land is now available for sale. Kelleher & Sadowsky Associates has been named the exclusive sales agent for the property located at 282 Southbridge Street (Route 12) in Auburn, Massachusetts. The ±10 acre site is in close proximity to area amenities such as the Auburn Mall, Wal-Mart, Home Depot, and BJ's Wholesale Club. Convenient access to major highways including Routes 20, 146, 290, 395 and I-90 (Mass Pike). The site is highly visible on Route 12, making this an excellent development location for a variety of uses. Flexible Highway Business zoning would permit uses from office development to light manufacturing. Less than 0.25 miles from Drury Square in the center of Auburn. Call us today to set up a tour!

Pricing: \$750,000.00
Real Estate Tax: \$7,685 Annually (2013)
Rail Access: Yes
Frontage: ±2,010 feet on Southbridge Street (Route 12)
Utilities: Electric, Water, Sewer

Kelleher & Sadowsky
120 Front Street, Suite 210
Worcester, MA 01608
508.755.0707 Office
kellehersadowsky.com

William D Kelleher, IV
Principal
Direct 508.635.6785
Cell 508.596.5395
wkelleher@kelleher-sadowsky.com

James P. Cozza
Vice President
Direct 508.635.6782
Cell 508.450.4271
cozza@kelleher-sadowsky.com

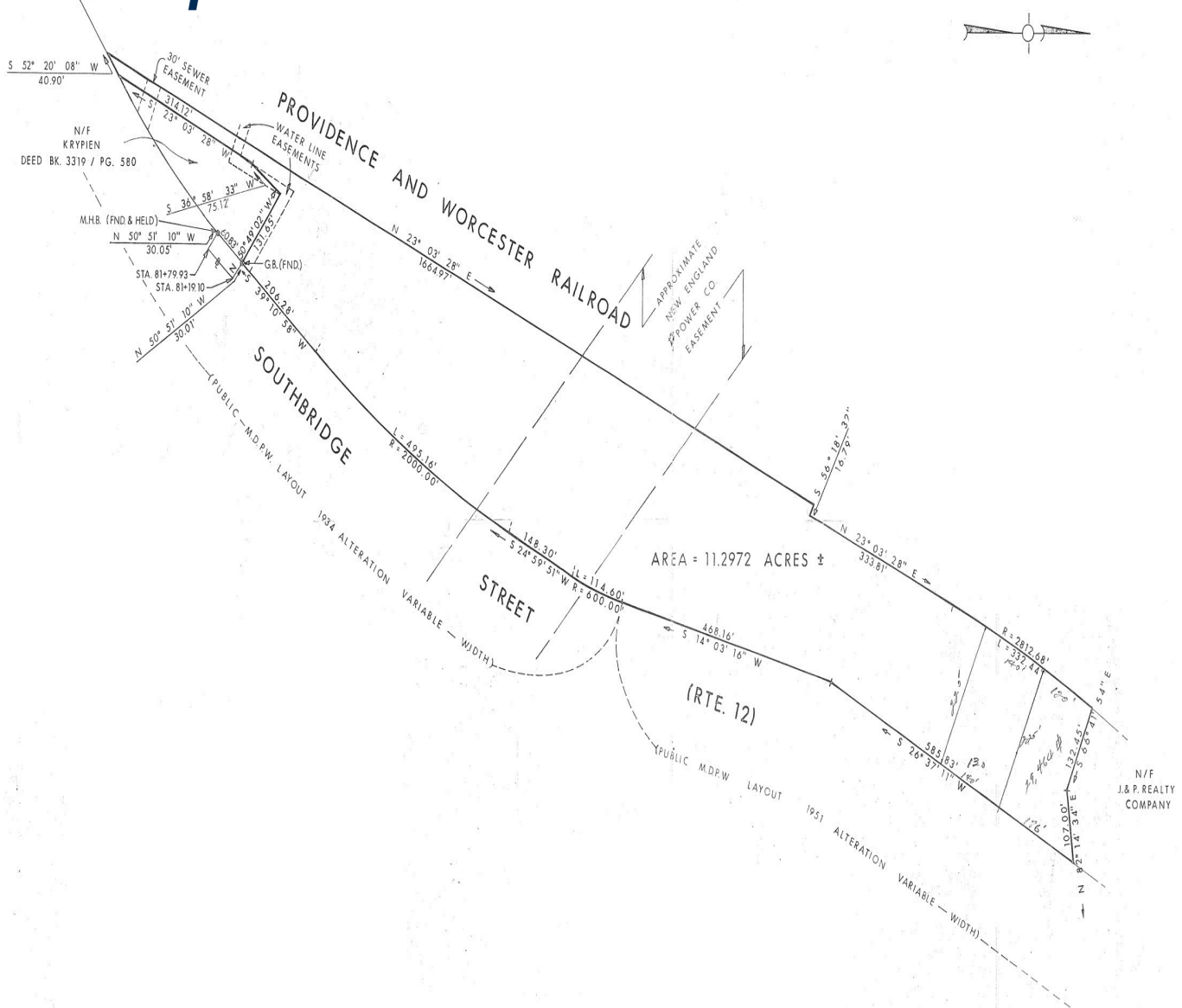


Available For Sale

±10 Acres of Land

282 Southbridge Street, Auburn, Massachusetts 01501

Site Map



Kelleher & Sadowsky
120 Front Street, Suite 210
Worcester, MA 01608
508.755.0707 Office
kellehersadowsky.com

William D Kelleher, IV
Principal
Direct 508.635.6785
Cell 508.596.5395
wkelleher@kelleher-sadowsky.com

James P. Cozza
Vice President
Direct 508.635.6782
Cell 508.450.4271
cozza@kelleher-sadowsky.com

This information has been obtained from sources believed reliable. We have not verified it and make no guarantee, warranty or representation about it. Any projections, opinions, assumptions or estimates used are for example only and do not represent the current or future performance of the property. You and your advisors should conduct an independent investigation of the property to determine to your own satisfaction the suitability of the property for your needs.

Available For Sale

±10 Acres of Land

282 Southbridge Street, Auburn, Massachusetts 01501

Assessor Map



Kelleher & Sadowsky
120 Front Street, Suite 210
Worcester, MA 01608
508.755.0707 Office
kellehersadowsky.com

William D Kelleher, IV
Principal
Direct 508.635.6785
Cell 508.596.5395
wkelleher@kelleher-sadowsky.com

James P. Cozza
Vice President
Direct 508.635.6782
Cell 508.450.4271
cozza@kelleher-sadowsky.com

This information has been obtained from sources believed reliable. We have not verified it and make no guarantee, warranty or representation about it. Any projections, opinions, assumptions or estimates used are for example only and do not represent the current or future performance of the property. You and your advisors should conduct an independent investigation of the property to determine to your own satisfaction the suitability of the property for your needs.