

**612 Fitzwatertown Road
Willow Grove, PA 19090**

**Contact: Ed 215-378-6890
1st floor office, 2100 sq. ft.**

Front of building on Fitzwatertown Road.

Rear of building, signage can be seen from 611. Ample parking.



Front desk with wrap-around work station, check-in counter for patients.



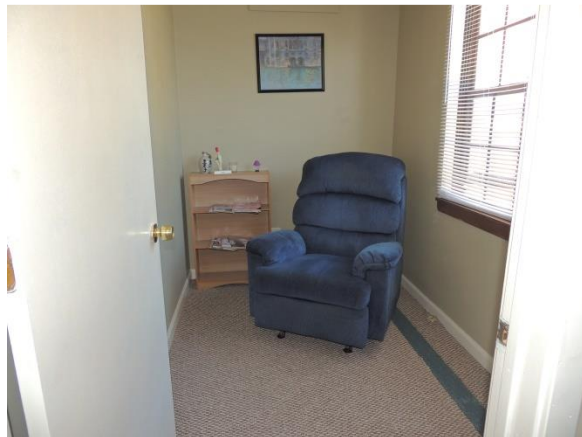
Waiting area located between front desk and main front office.



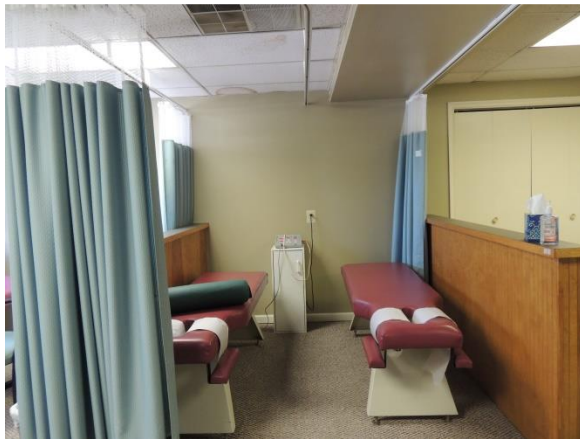
Main front office with phone. Restrooms and hospitality area.



Office/examination room with phone and workspace.
X-Ray capable room.



Treatment area: four bays divided by half-walls; each bay also separated into two areas by cubicle curtains for eight usable stations.



Large open room, currently set up as gym/therapy area.



Conference room located behind front desk area
Additional large room with rear entry to office.

