



# WOODLAND & MAIN

901 Woodland Street • 900 Main Street • 904 Main Street  
RETAIL AND OFFICE | FOR LEASE

woodland & main





901 WOODLAND ST  
1,127 - 5,887 SF

900 MAIN ST  
1,290 - 17,727 SF

904 MAIN ST  
1,200 - 4,679 SF

**wework**

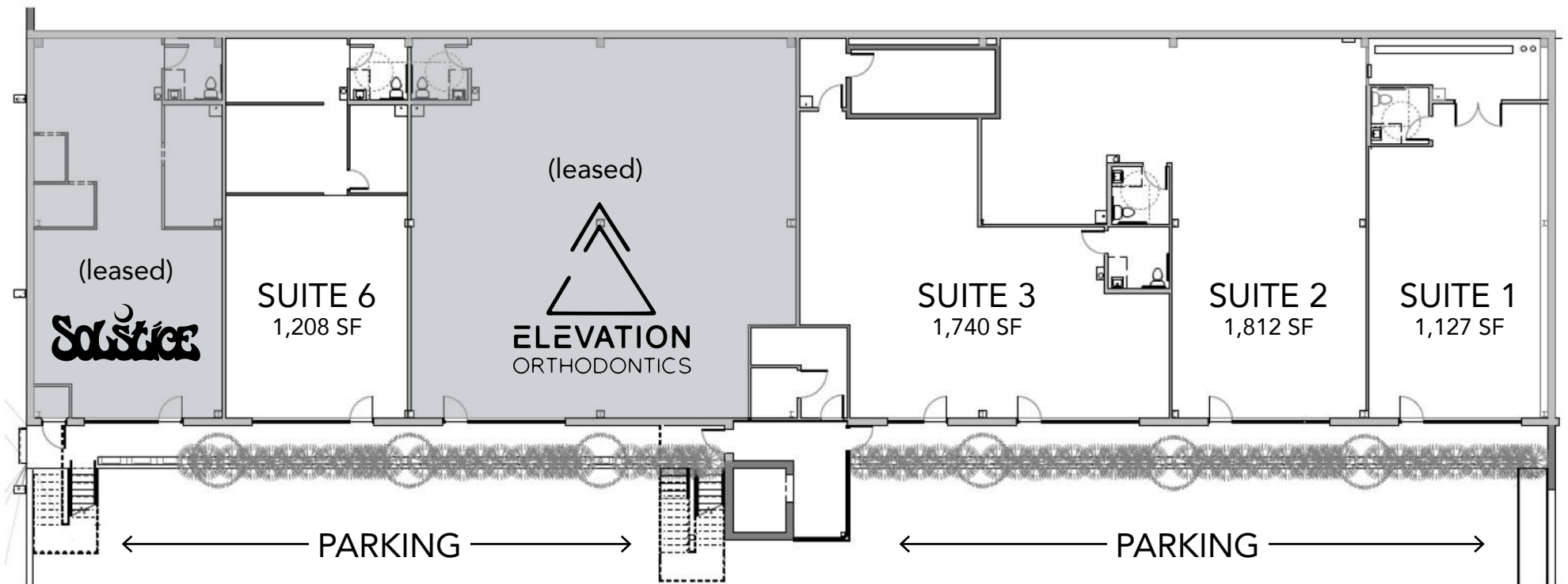
*Butcher & Bee*

**EDLEY'S  
BAR-B-QUE**

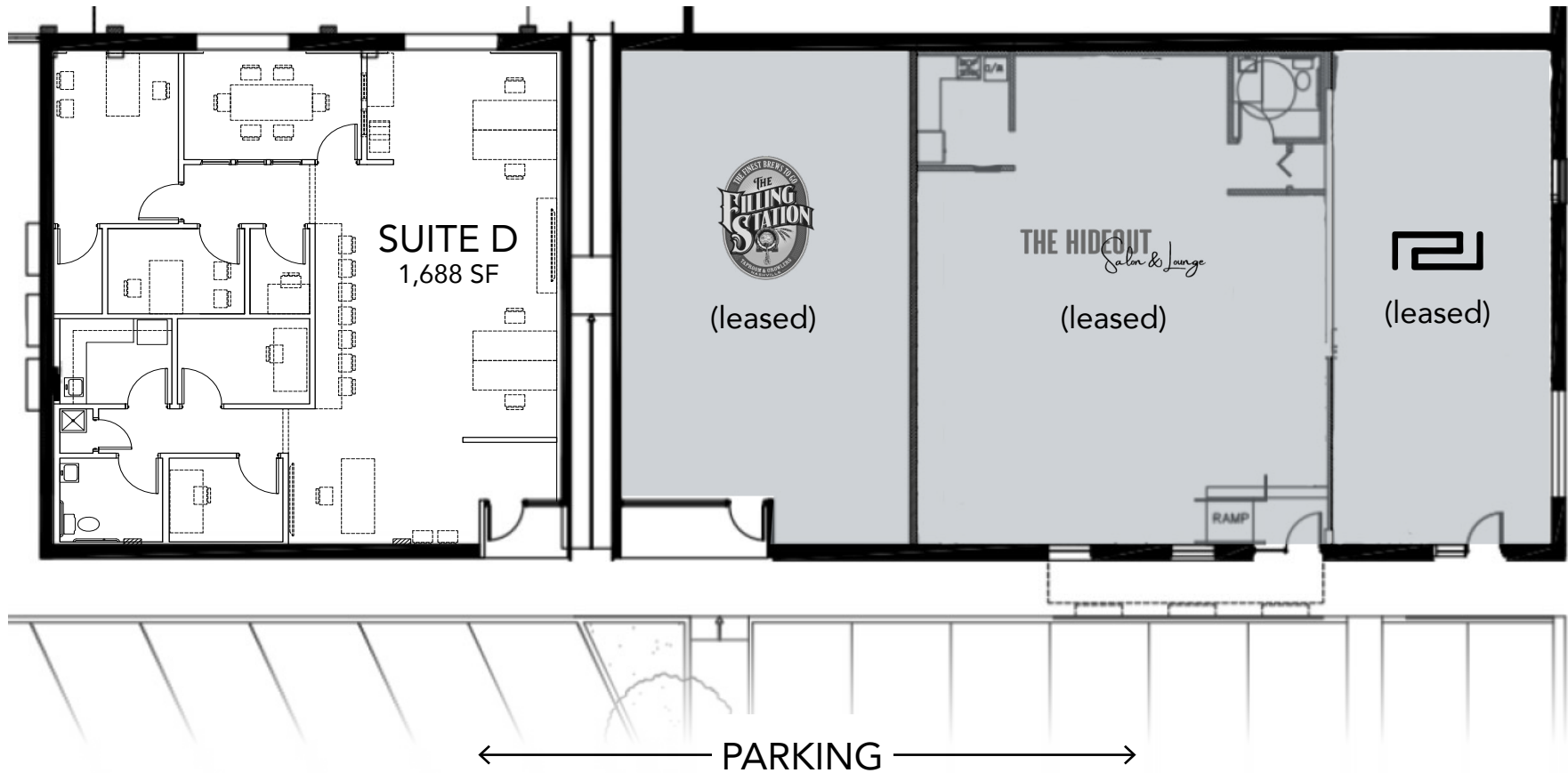


# 901 WOODLAND ST: LOWER LEVEL

Retail or Office | 1,127 - 5,887 SF

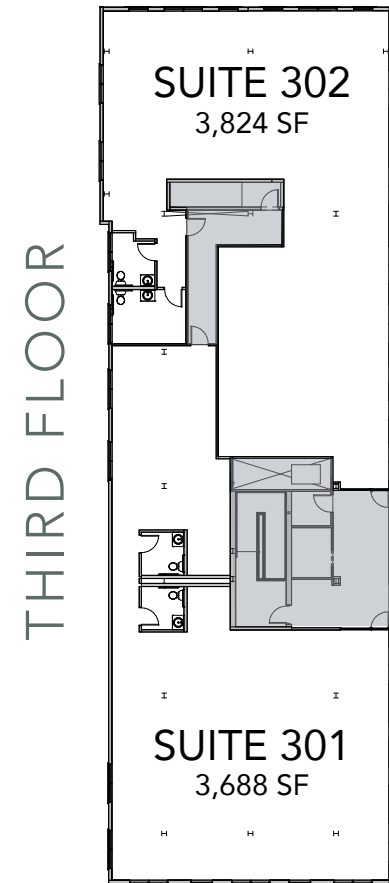
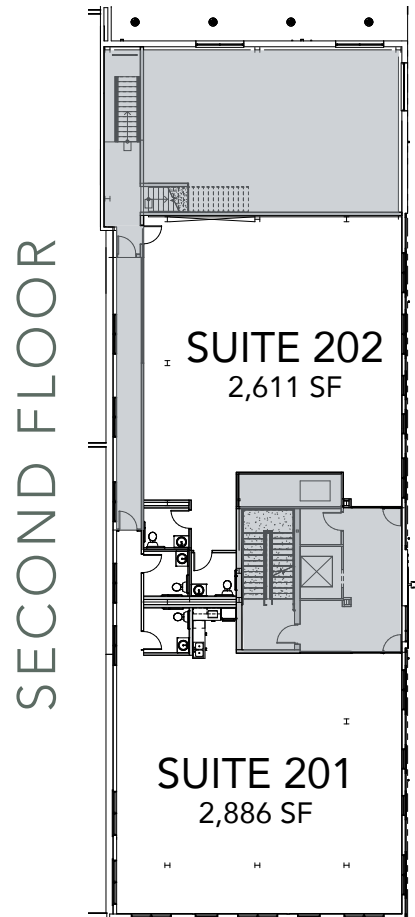
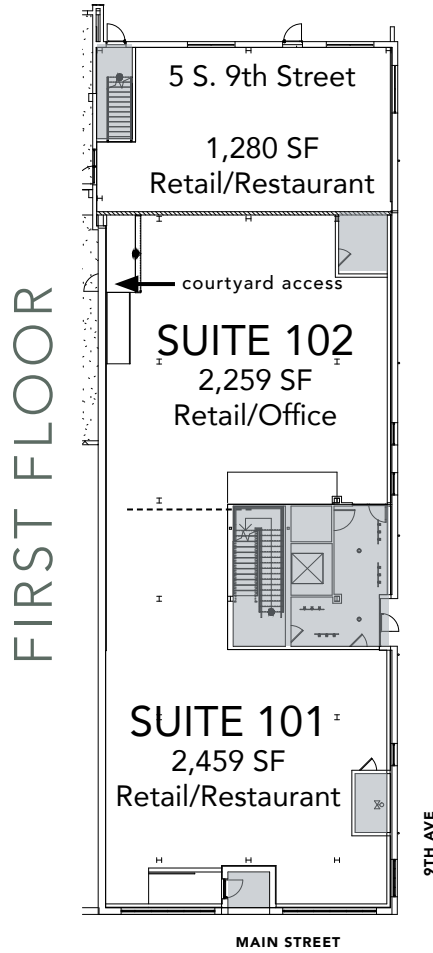


904 MAIN ST  
Retail or Office | 1,688 SF



# 900 MAIN ST

Retail or Office | 1,250 - 17,727 SF







# woodland & main

901 Woodland Street  
900 Main Street  
904 Main Street

RETAIL AND OFFICE | FOR LEASE

CONTACT:

**JEREMIAH PYRON**

(o) 615 861 0282  
jpyron@sagemontre.com

**TRENT YATES**

(o) 615 268 7724  
tyates@sagemontre.com



**SAGEMONT**  
REAL ESTATE

