



MEACHAM/OPPENHEIMER CORFAC INTERNATIONAL
Commercial Brokerage | Investment Sales | Property Management



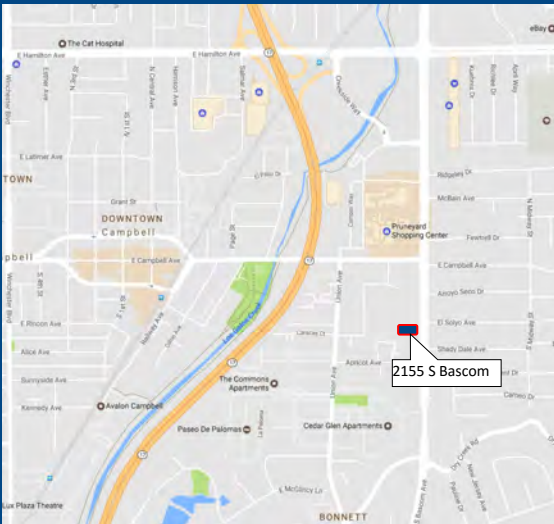
**BASCOM
OFFICE CENTER
2155 S. BASCOM AVE.
CAMPBELL, CALIFORNIA**

**OFFICE SUITE AVAILABLE
S. Bascom Ave.
Best Price in the Area**



PROPERTY HIGHLIGHTS:

- 1,525± SF Office Suite
- 3 Private Offices
- Great Windowline
- Freshly Painted And Move-In Ready
- Ample Parking, 134 Onsite Spots
- Monument Signage on Bascom Ave.
- Adjacent to Lincoln Court, Near The Pruneyard
- Close to Public Transportation
- \$2.75 PSF, Full Service
- Additional Suites/Sizes Available



**MEACHAM/OPPENHEIMER, INC.
CORFAC INTERNATIONAL
8 No. San Pedro St., Suite 300
San Jose, California 95110
Tel: 408.378.5900**

FOR MORE INFORMATION CONTACT:

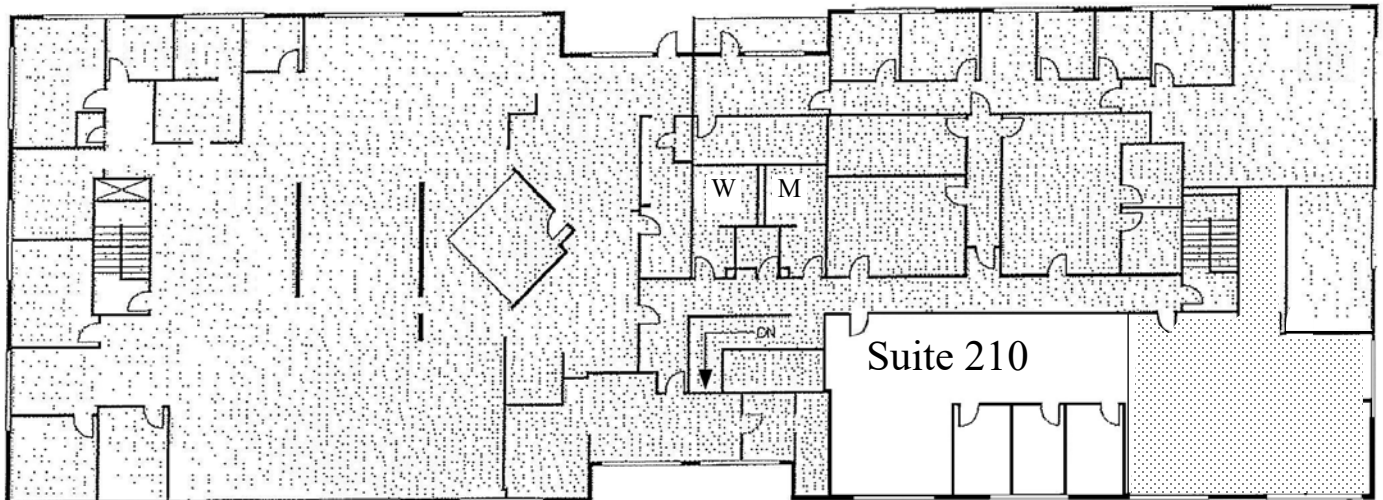
Josh Gispan
Lic. #00974978
JGispan@moinc.net
(408) 378-5900

2155 S. BASCOM AVE. • CAMPBELL, CALIFORNIA



Josh Gispan
Lic. #00974978
JGispan@moinc.net
(408) 378-5900

2155 S. BASCOM AVE. • CAMPBELL, CALIFORNIA



1,525± SF

MEACHAM/OPPENHEIMER, INC.
CORFAC INTERNATIONAL
8 No. San Pedro St., Suite 300
San Jose, California 95110
Tel: 408.378.5900
www.moinc.net

Josh Gispan
Lic. #00974978
JGispan@moinc.net
(408) 378-5900

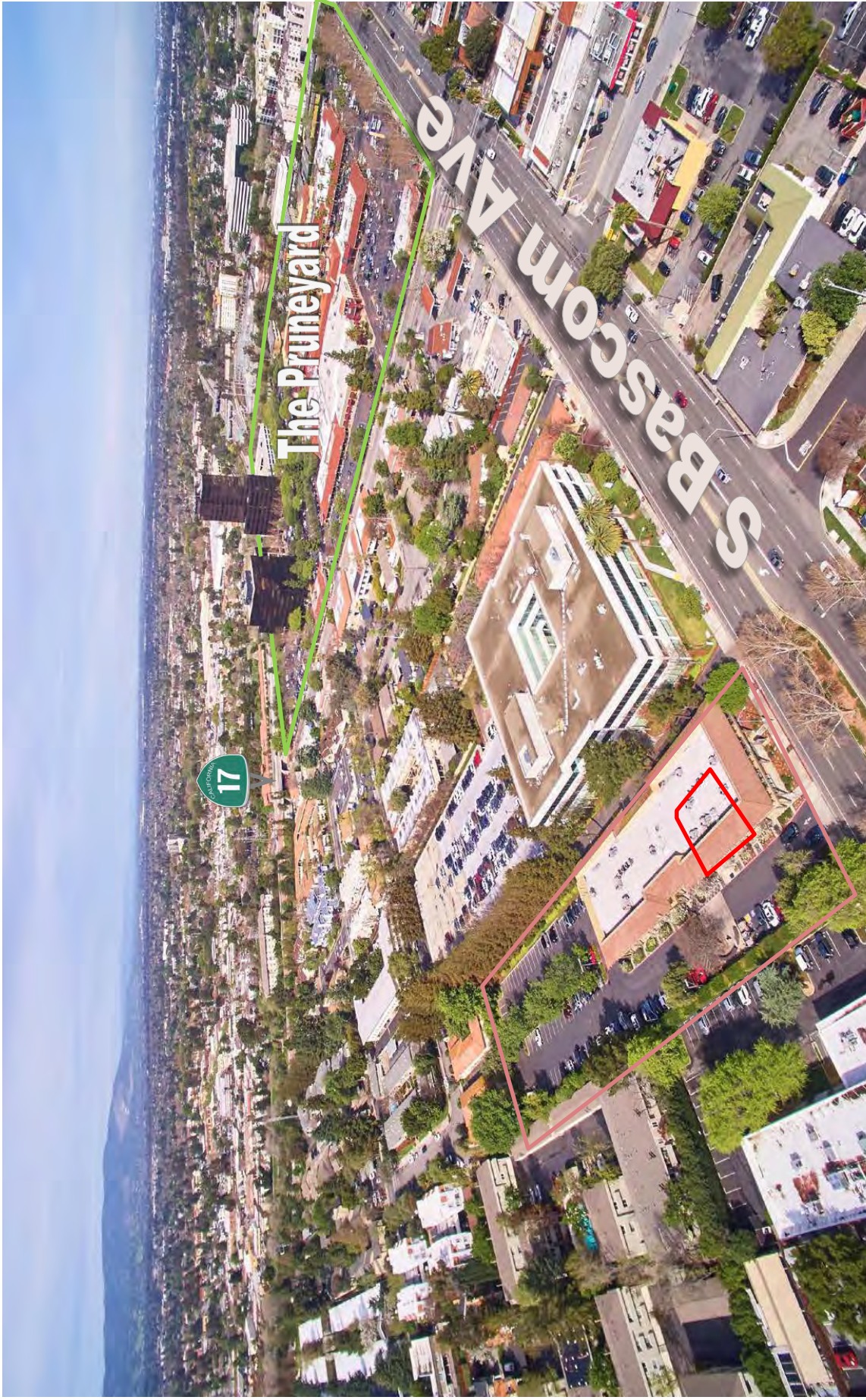
2155 S. BASCOM AVE. • CAMPBELL, CALIFORNIA



MEACHAM/OPPENHEIMER, INC.
CORFAC INTERNATIONAL
8 No. San Pedro St., Suite 300
San Jose, California 95110
Tel: 408.378.5900
www.moinc.net

Josh Gispan
Lic. #00974978
JGispan@moinc.net
(408) 378-5900

2155 S. BASCOM AVE. • CAMPBELL, CALIFORNIA



MEACHAM/OPPENHEIMER, INC.
CORFAC INTERNATIONAL
8 No. San Pedro St., Suite 300
San Jose, California 95110
Tel: 408.378.5900
www.moinc.net

Josh Gispan
Lic. #00974978
JGispan@moinc.net
(408) 378-5900

The information contained herein has been obtained from sources we deem reliable. We cannot, however, assume responsibility for its accuracy.