



**CUSHMAN &
WAKEFIELD**
Commerce

FOR LEASE

555 East Broadway

Salt Lake City, Utah 84102



555 BROADWAY

Connected, accessible neighborhood location within 1 block of Trax!

Property Highlights

- Second floor: 3,000 - 8,500 RSF
- Google Fiber available
- 3.5/1,000 RSF free parking
- Many restaurants & amenities within walking distance
- Signage & storage available
- Secured building access
- Lease Rate: \$18.00 RSF full service
- Tenant improvements available
- Planned common area and exterior upgrades

2nd Floor



Alison Beddard
Director
+1 801 303 5568
abeddard@comre.com

Peter Hanlon
Director
+1 801 303 5455
phanlon@comre.com

Annastasia Kaessner
Associate
+1 801 303 5447
akaessner@comre.com

170 South Main Street Suite 1600
Salt Lake City, UT 84101
Main +1 801 322 2000
Fax +1 801 322 2040
comre.com

Independently Owned and Operated / A Member of the Cushman & Wakefield Alliance

Cushman & Wakefield Copyright 2016. No warranty or representation, express or implied, is made to the accuracy or completeness of the information contained herein, and same is submitted subject to errors, omissions, change of price, rental or other conditions, withdrawal without notice, and to any special listing conditions imposed by the property owner(s). As applicable, we make no representation as to the condition of the property (or properties) in question.
(path: G:\1 - Projects\Beddard, A\1 - Flyers\555Broadway)

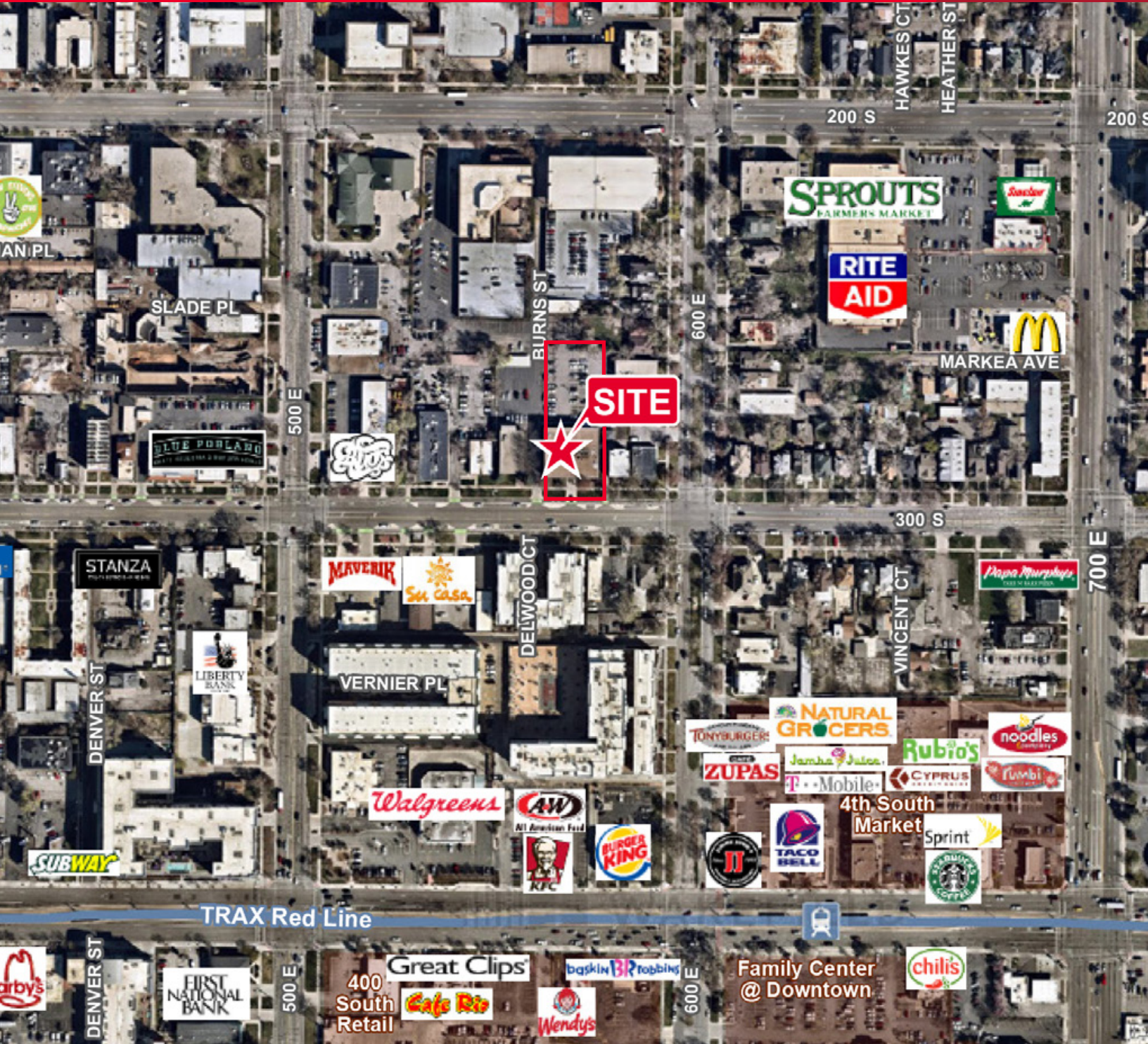


**CUSHMAN &
WAKEFIELD**
Commerce

FOR LEASE

555 East Broadway

Salt Lake City, Utah 84102



Alison Beddard
Director
+1 801 303 5568
abeddard@comre.com

Peter Hanlon
Director
+1 801 303 5455
phanlon@comre.com

Annastasia Kaessner
Associate
+1 801 303 5447
akaessner@comre.com

170 South Main Street Suite 1600
Salt Lake City, UT 84101
Main +1 801 322 2000
Fax +1 801 322 2040
comre.com

Independently Owned and Operated / A Member of the Cushman & Wakefield Alliance

Cushman & Wakefield Copyright 2016. No warranty or representation, express or implied, is made to the accuracy or completeness of the information contained herein, and same is submitted subject to errors, omissions, change of price, rental or other conditions, withdrawal without notice, and to any special listing conditions imposed by the property owner(s). As applicable, we make no representation as to the condition of the property (or properties) in question.
(path: G:\1 - Projects\Beddard, A1 - Flyers\555Broadway)